

For Lease

Metrowest Medical Center
1781 PARK CENTER DRIVE, ORLANDO, FL 32835



BUILDING DATA

Total Building SF: 24,498 SF
Year Built: 1997
Zoning: O-2
Parking Ratio: 4.61/1,000 SF

LISTING DATA

Available SF: 1,753 SF

Comments: Located in Orlando's Master Planned West End Community, Metrowest; the Metrowest Medical Center is a modern 2 story building constructed in 1997 and significantly renovated in 2004. The building is home to specialties such as Primary Care, Diagnostic Imaging, Otolaryngology and Ophthalmology. Current vacancy is a 1st floor unit with glass on 2 sides offering southern exposure, direct parking lot access and an entry right off of the buildings atrium. Landlord is willing to provide a turn key medical interior.

ECONOMIC DATA

Lease Rate: \$22.00 SF/yr (NNN)



For more information contact:
Jason Bantel, CCIM
jbantel@lee-associates.com
D: 321.281.8509

1017 E. SOUTH STREET
ORLANDO, FL 32801

We obtained the information above from sources we believe to be reliable. However, we have not verified its accuracy and make no guarantee, warranty or representation about it. It is submitted subject to the possibility of errors, omissions, change of price, rental or other conditions, prior sale, lease or financing, or withdrawal without notice. We include projections, opinions, assumptions or estimates for example only, and they may not represent current or future performance of the property. You and your tax and legal advisors should conduct your own investigation of the property and transaction.

LeeCFL.com



P: 321.281.8500

For Lease

Metrowest Medical Center

1781 PARK CENTER DRIVE, ORLANDO, FL 32835



LEE & ASSOCIATES
COMMERCIAL REAL ESTATE SERVICES

1017 E. SOUTH STREET
ORLANDO, FL 32801

For more information contact:

Jason Bantel, CCIM
jbantel@lee-associates.com
D: 321.281.8509

We obtained the information above from sources we believe to be reliable. However, we have not verified its accuracy and make no guarantee, warranty or representation about it. It is submitted subject to the possibility of errors, omissions, change of price, rental or other conditions, prior sale, lease or financing, or withdrawal without notice. We include projections, opinions, assumptions or estimates for example only, and they may not represent current or future performance of the property. You and your tax and legal advisors should conduct your own investigation of the property and transaction.

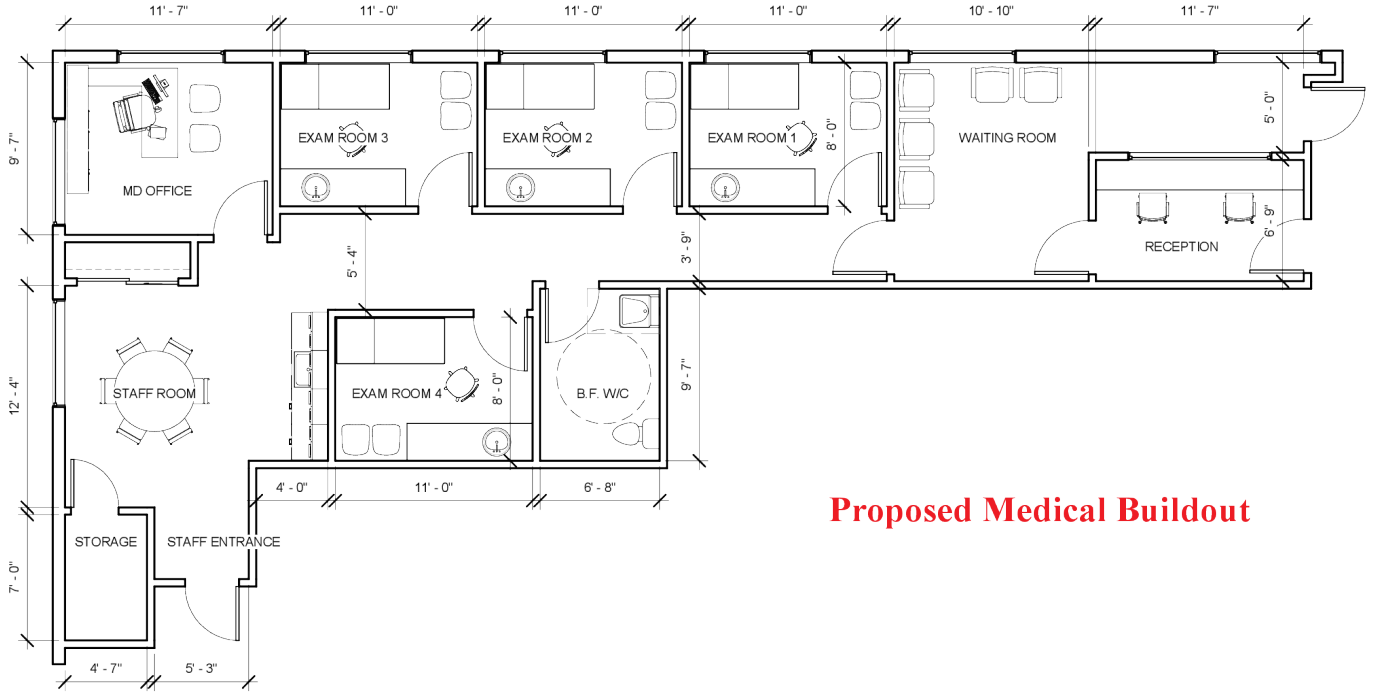
LeeCFL.com



P: 321.281.8500

For Lease

Metrowest Medical Center
 1781 PARK CENTER DRIVE, ORLANDO, FL 32835



Proposed Medical Buildout

SPACE	SPACE USE	LEASE RATE	LEASE TYPE	SIZE (SF)	TERM	COMMENTS
Unit 130	Medical	\$22.00 SF/YR	NNN	1,753 SF	Negotiable	1st floor unit with glass on 2 sides offering southern views, direct entry right off of the buildings atrium. Landlord is willing to provide a turn key medical interior.