

# FLINT HILL CENTRE

3050 Chain Bridge Road, Oakton, VA

**Alan Asman**  
703.749.9464  
alan.asman@  
transwestern.com

**Bernie McKeever**  
703.749.9483  
bernie.mckeever@  
transwestern.com

**Bernie McKeever, Jr.**  
703.749.9462  
bernard.mckeever@  
transwestern.com

**SMALL SUITES  
AVAILABLE**

**OUTSTANDING VIEWS**

**IMMEDIATE 66 & 123 ACCESS**

# FLINT HILL CENTRE

3050 Chain Bridge Road, Oakton VA

## SPACE AVAILABILITY

\$26.00 PSF, Full Service

**3<sup>rd</sup>**  
Floor

2,190 SF    7,008 SF  
4,818 SF    CONTIGUOUS

**4<sup>th</sup>**  
Floor

4,436 SF

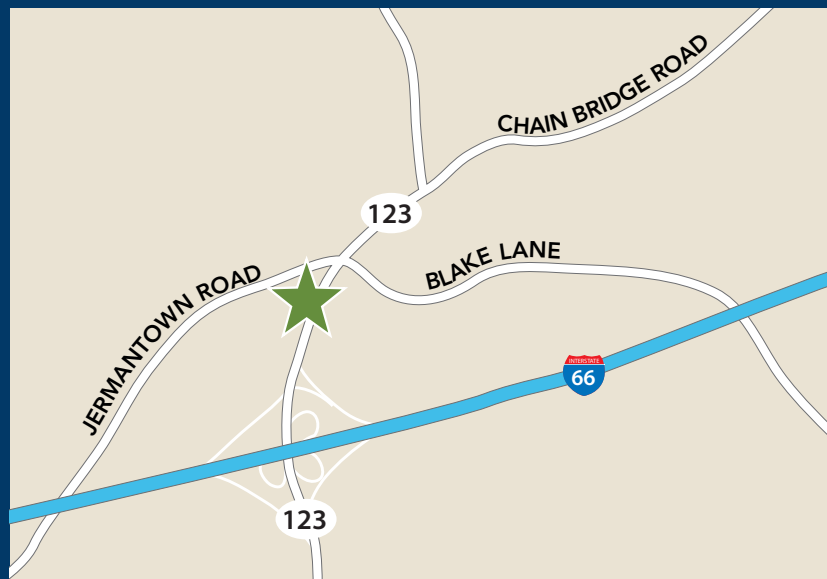
**5<sup>th</sup>**  
Floor

7,896 SF

Immediate access to  
Route 123 and I-66

## AMENITIES

- Parking at 3.70/1,000 with free covered parking available
- Approximate 10-15 minute Metrobus and Fairfax Connector bus ride to the Vienna/GMU Metro Station consistently throughout the day from the front of the building
- Abundant Windowline



# THIRD FLOOR

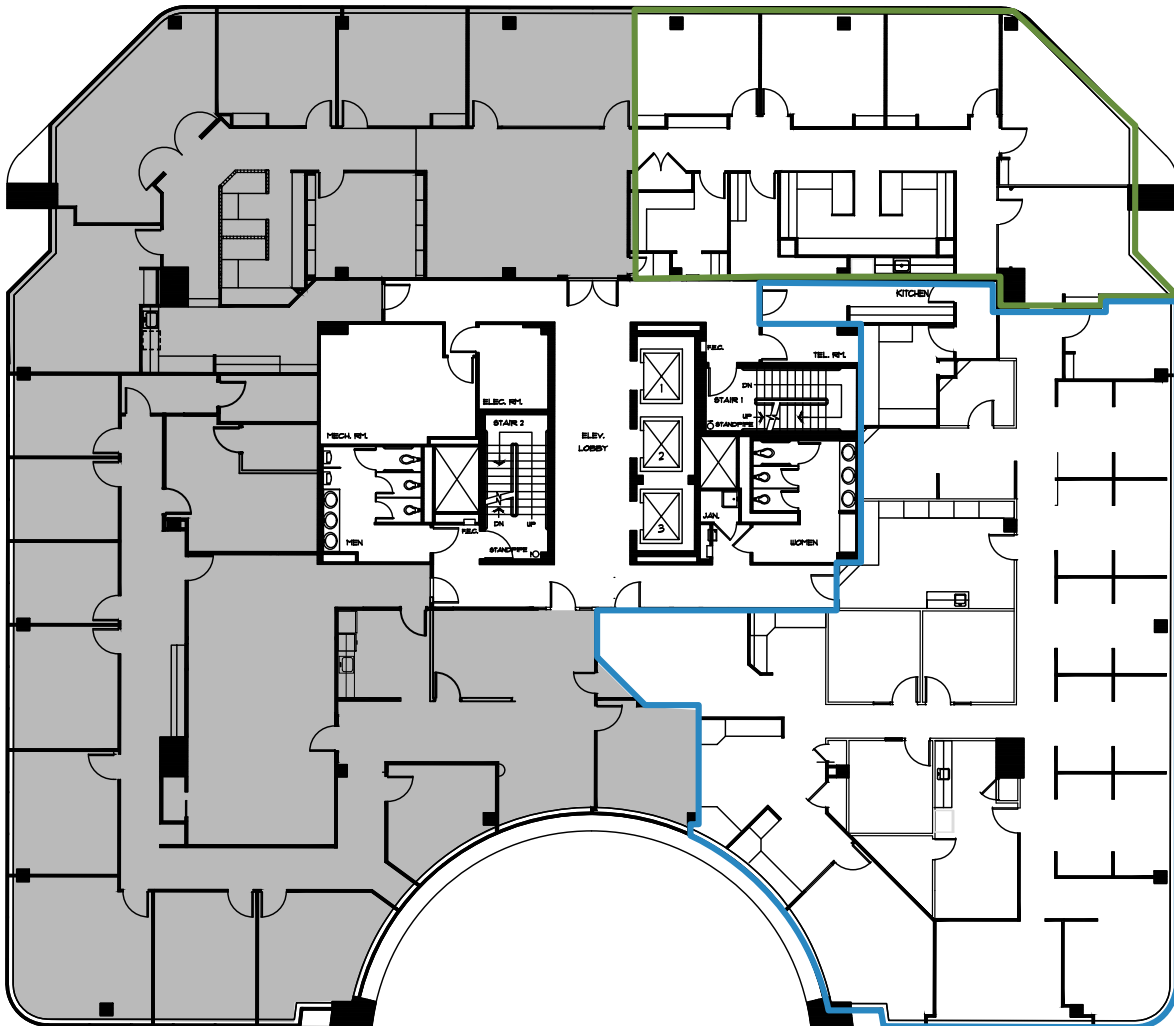
Suite 315 & 310:  
7,008 SF Contiguous

## Suite 310 - 4,818 SF

Elevator lobby entrance  
Built-in work stations  
Conference room  
Kitchen  
Available Immediately

## Suite 315 - 2,190 SF

Corner Suite  
Abundant windowed offices  
Available Immediately



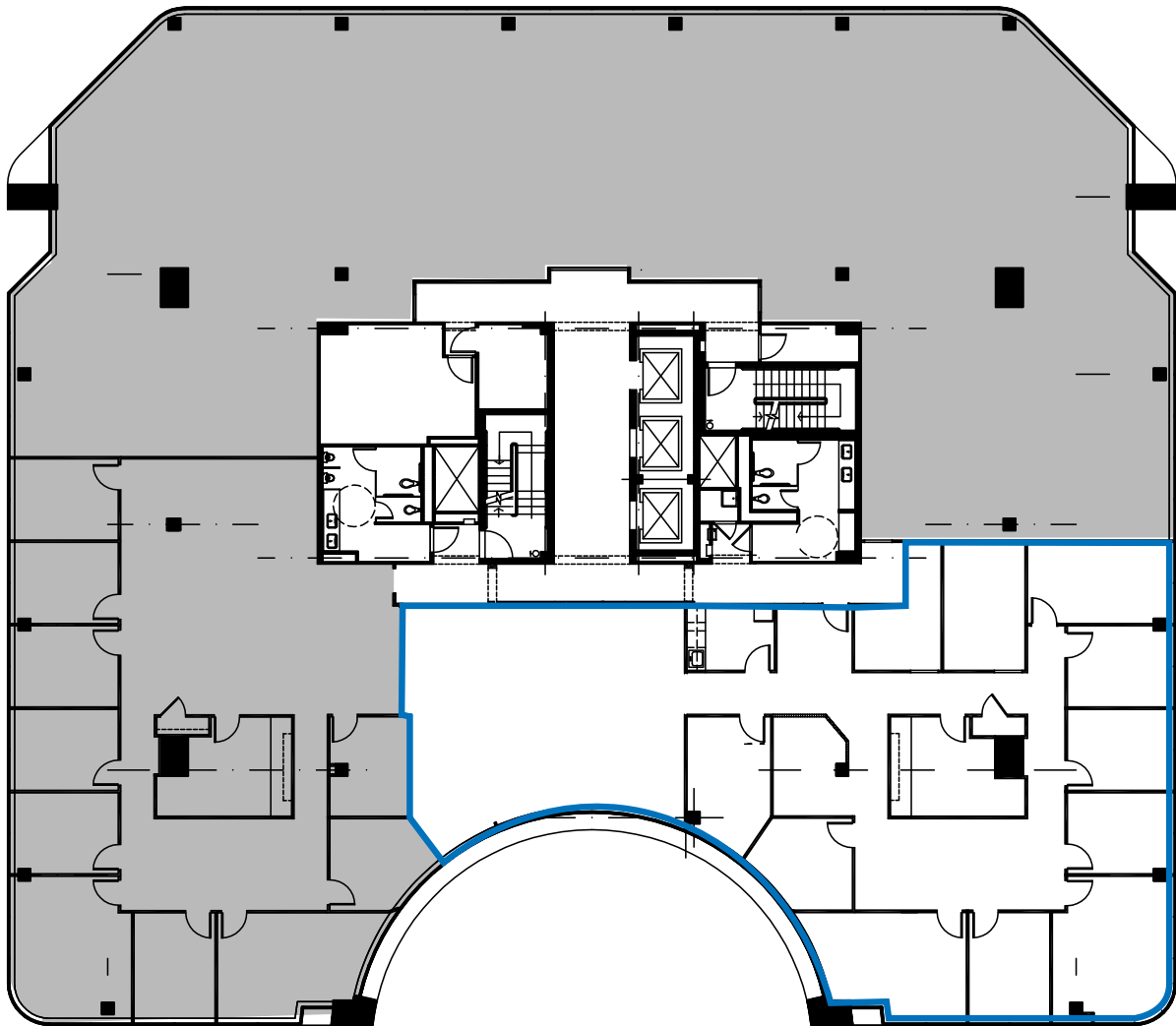
# FOURTH FLOOR

## Suite 420 - 4,436 SF

Excellent views

Elevator lobby entrance

Abundant windowline



+

# FIFTH FLOOR

## Suite 500 - 7,896 SF

- Direct elevator lobby exposure
- Mix of open and closed offices
- SCIF space with ICD 705 Rating
- 1.5 Ton Supplemental HVAC in LAN room





7900 Tysons One Place  
Suite 600  
McLean, VA 22102  
703.821.0040  
transwestern.com

Alan Asman  
703.749.9464  
alan.asman@transwestern.com

Bernie McKeever  
703.749.9483  
bernie.mckeever@transwestern.com

Bernie McKeever, Jr.  
703.749.9462  
bernard.mckeever@transwestern.com