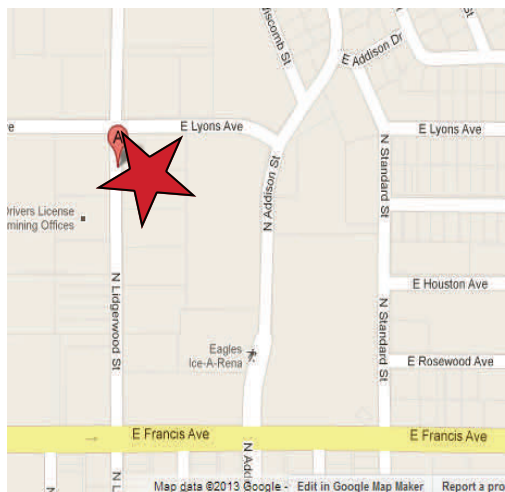


Available for Ground Lease Vacant Land

6600 North Lidgerwood, Spokane, Washington



Parcel Numbers:

36293.2111
36293.2112
36293.2113
36293.2114

Each Parcel:

48,604 SF ±

Combined SF of Parcels:

194,416 SF/4.46 Acres ±

Zoning:

C1-1L

Population Within:

One Mile: 17,835
Three Miles: 103,097
Five Miles: 183,333

Traffic Counts:

5,800 Cars Per Day

Contact Information:

Chris Bell, SIOR
509 622 3538
cbell@naiblack.com

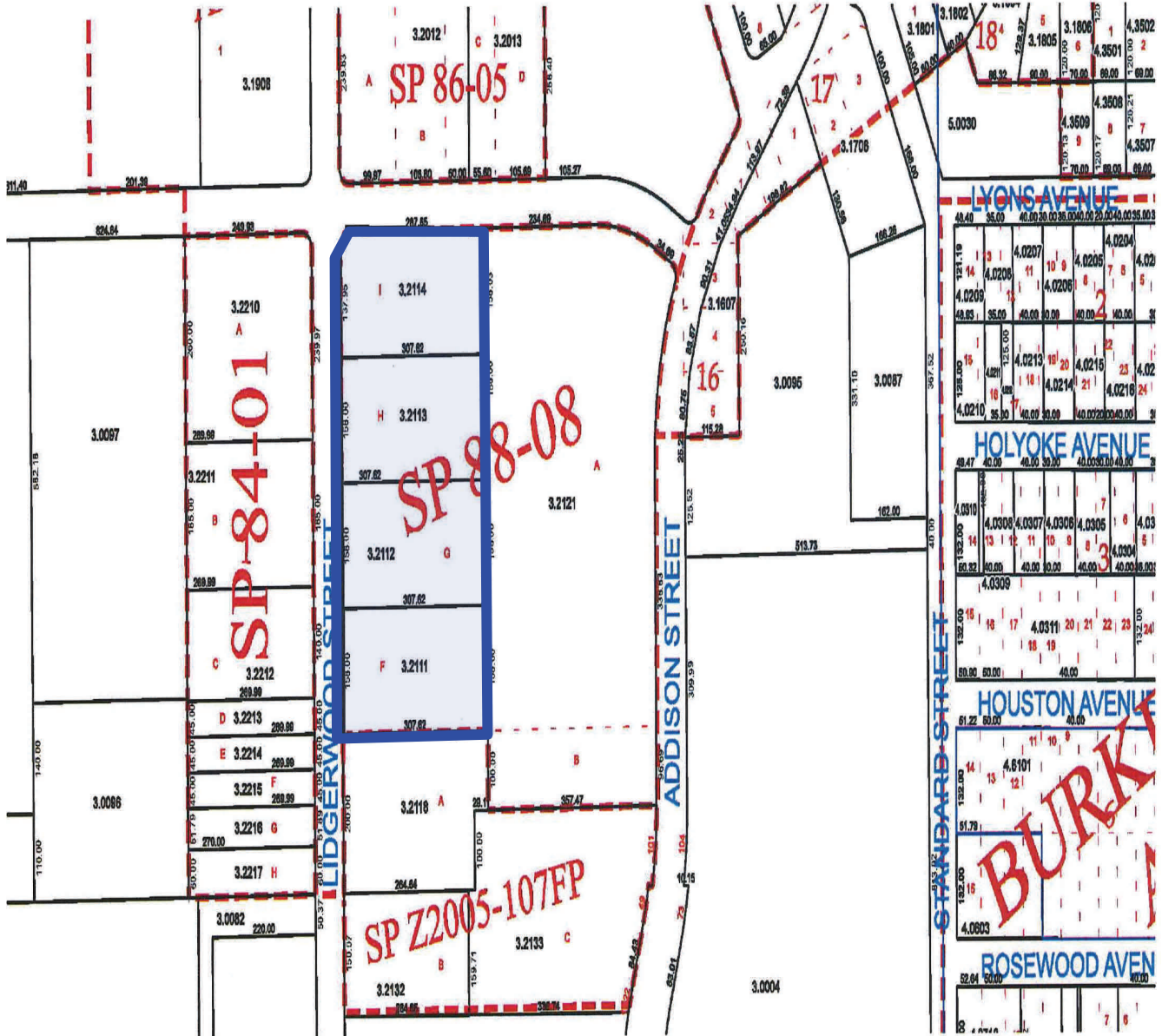
Black Commercial, Inc.
801 W Riverside, Suite 300
Spokane, WA 99201
direct 509 623 1000
fax 509 622 3500
www.naiblack.com



Commercial Real Estate Services, Worldwide.

The information contained herein has been given to us by the owner of the property or other sources we deem reliable, we have no reason to doubt its accuracy, but we do not guarantee it. All information should be verified prior to purchase or lease.

Available for Ground Lease Vacant Land 6600 North Lidgerwood, Spokane, Washington



NOTICE

This sketch is furnished as a courtesy only, by First American Title Insurance Company, and it IS NOT a part of any title commitment or policy of title insurance.

This sketch is furnished solely for the purpose of assisting in locating the premises and does not purport to show all highways, roads or easements affecting the property. No reliance should be placed upon this sketch for the location or dimensions of the property and no liability is assumed for the correctness thereof.



Commercial Real Estate Services, Worldwide.

The information contained herein has been given to us by the owner of the property or other sources we deem reliable, we have no reason to doubt its accuracy, but we do not guarantee it. All information should be verified prior to purchase or lease.