

FOR LEASE - HOTEL
3515 Fremont Avenue N, Seattle, WA 98103

ESTABLISHED
BOUQUIN
TURNKEY
HOTEL / HOSTEL

AWAITS NEW
OPERATOR

For more information please contact:

JULIE CARVALHO

juliec@gibraltarusa.com

206.898.1731

JOHN SLONECKER

johns@gibraltarusa.com

425.770.0942



SEATTLE, WA 98103

3 5 1 5 F R E M O N T A V E N U E N



LOCATION OVERVIEW

Fremont, known as the Center of the Universe, is a vibrant, bohemian Seattle neighborhood with lakefront access, stellar restaurants, trendy coffee cafes, public art and boutique shops to enjoy. Just 4 miles from Seattle's Downtown shopping core and just 18 miles from SeaTac Airport, Fremont is a travelers delight!

PROPERTY OVERVIEW

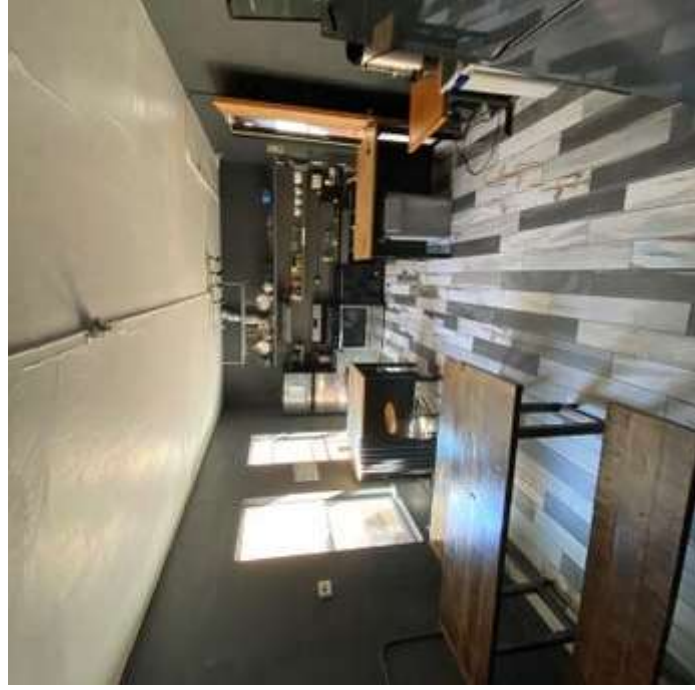
- Hip 19+ room, turnkey Hostel for Lease in the heart of Fremont.
- Established hostel operating for 10 years, awaiting new operator, Opportunity awaits!
- 7,649 sf
- 3 private suites featuring en-suite bathroom and shower.
- 5 newly upgraded common area bathroom and showers.
- Fully stocked shared kitchen.
- Care takers suite.
- Laundry facilities.
- Reception area.
- Access control system; FF&E
- Unique vintage details include exposed brick walls and original mural.

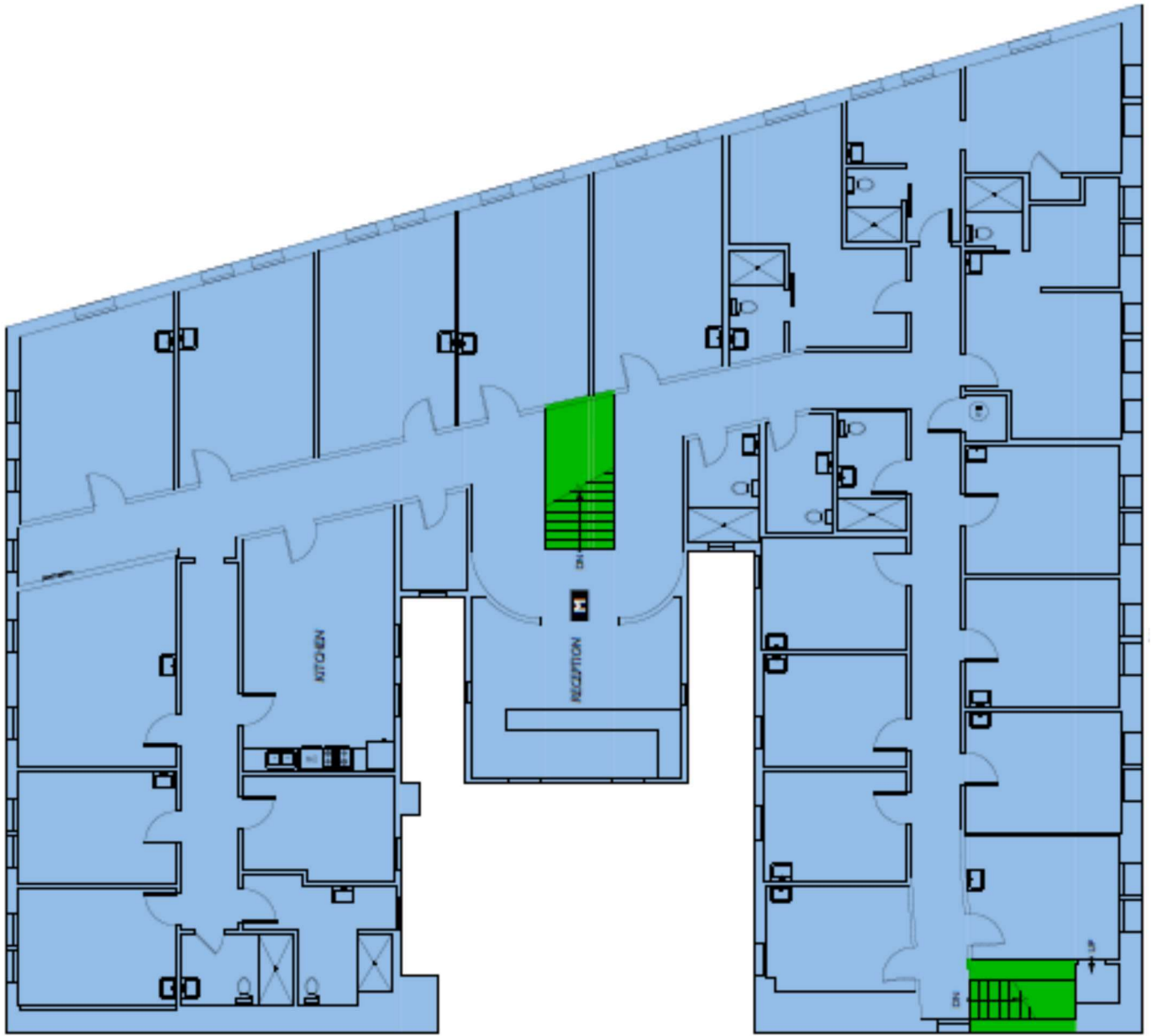
Current Occupancy Group: R-1 Hotel
Asking Rate \$18/sf/year + NNN

This information has been obtained from sources believed reliable. No guarantee, warranty or representation, express or implied, is made as to the accuracy of the information contained herein, and same is submitted subject to errors, omissions, change of price, rental or other conditions withdrawal without notice, and to any special listing conditions, imposed by our principals. Any projections, opinions, assumptions or estimates used are for example only and do not represent the current or future performance of the property.

SEATTLE, WA 98103

3515 FREMONT AVENUE N





SEATTLE, WA 98103

3515 FREMONT AVENUE N



SEATTLE, WA 98103

3515 FREMONT AVENUE N



For more information please contact:

JULIE CARVALHO
juliec@gibraltarusa.com
206.898.1731

JOHN SLONECKER
johns@gibraltarusa.com
425.770.0942



720 SENECA ST - SUITE B - SEATTLE, WA 98101

This information has been obtained from sources believed reliable. No guarantee, warranty or representation, express or implied, is made as to the accuracy of the information contained herein, and same is submitted subject to errors, omissions, change of price, rental or other conditions withdrawal without notice, and to any special listing conditions, imposed by our principals. Any projections, opinions, assumptions or estimates used are for example only and do not represent the current or future performance of the property.