

MID-TOWN / PACKING DISTRICT

UNDER CONSTRUCTION - 10K SF WITH STORAGE YARD FOR SALE/LEASE

1584 COLLEGE PARK BUSINESS CENTER RD, BUILDING 1C

FOUNDRY
COMMERCIAL



DEVELOPMENT

Industrial zoning (IG) permits outdoor storage and one 10,000 SF warehouse is under construction on site.

LOCATION

The Packing District is located in the center of the NW Submarket and provides excellent access to serve the city on primary roads John Young Parkway, Orange Blossom Trail, 408, and I-4.

BUILDING 1C FEATURES

LEASE RATE	\$15.00 PSF NNN
SALE PRICE	\$1,600,000
ZONING	I-G/RP; City of Orlando
SIZE	10,000 SF
GRADE DOORS	(1) 12' x 14'
DOCK DOORS	Available
CLEAR	18'
YARD	.73 AC
POWER	3 phase, 200 amp, 208v
CONSTRUCTION	Pre-engineered & concrete block

FOR MORE INFORMATION, PLEASE CONTACT:

JUSTIN RUBY
407.540.7727
Justin.Ruby@foundrycommercial.com

JOEY WOODMAN
407.757.1515
Joey.Woodman@foundrycommercial.com

Foundry Commercial
420 South Orange Ave. Suite 950
Orlando, FL 32801

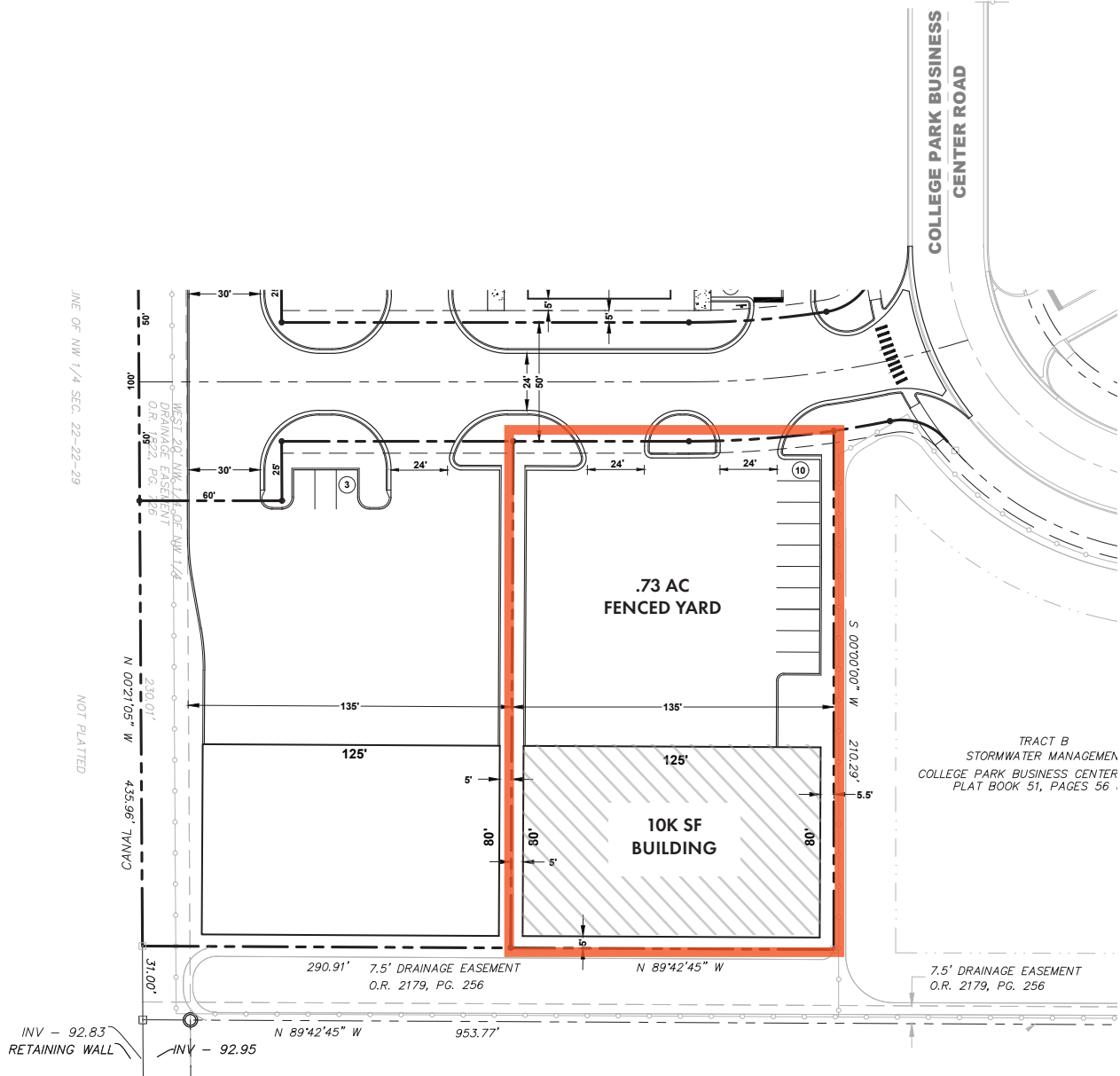
foundrycommercial.com

Although the information contained therein was provided from sources believed to be reliable, Foundry Commercial makes no representation, expressed or implied, as to its accuracy and said information is subject to errors, omissions or changes.

MID-TOWN / PACKING DISTRICT

UNDER CONSTRUCTION - 10K SF WITH STORAGE YARD FOR SALE/LEASE

1584 COLLEGE PARK BUSINESS CENTER RD, BUILDING 1C



FOR MORE INFORMATION, PLEASE CONTACT:

JUSTIN RUBY
407.540.7727
Justin.Ruby@foundrycommercial.com

JOEY WOODMAN
407.757.1515
Joey.Woodman@foundrycommercial.com

FOUNDRY
COMMERCIAL

420 South Orange Ave. Suite 950
Orlando, FL 32801

foundrycommercial.com

Although the information contained therein was provided from sources believed to be reliable, Foundry Commercial makes no representation, expressed or implied, as to its accuracy and said information is subject to errors, omissions or changes.