

22225-22236 South Ellsworth Road Queen Creek, Az. 85142



Land Parcel Available For Sale

Details:

- ± 38,822 SF (0.89 Acres)
- Parcels: 304-65-081A & B, 304-65-082 A & B, 304-65-101B
- Zoning: R1-6
- Located at Ellsworth Rd & Aldecoa Rd in Queen Creek
- Sales Price: \$475,000.00

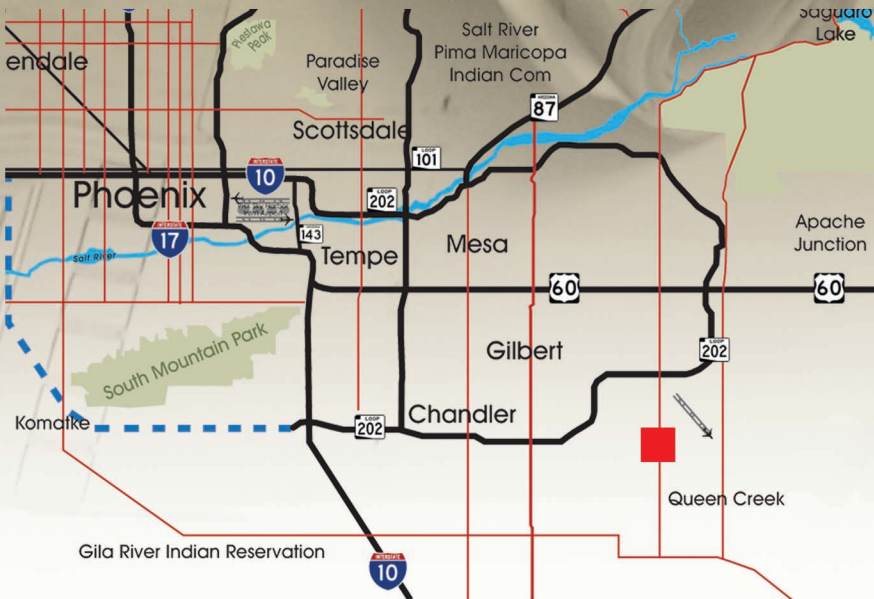
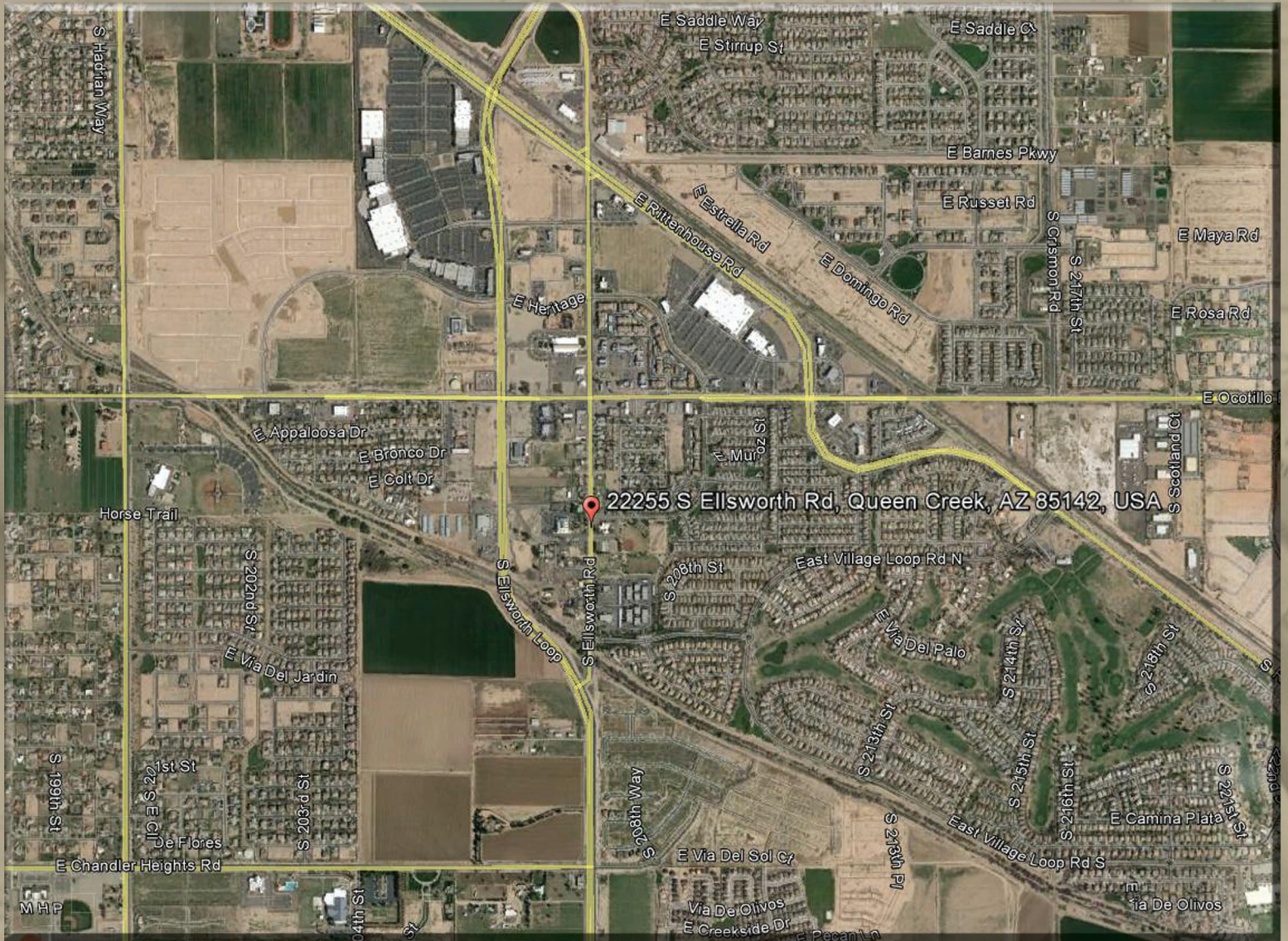
Tyson Breinholt
d: 480.966.7513
m: 602.315.7131
tbreinholt@yahoo.com



DISCLAIMER:
The information contained herein has been obtained from various sources. We have no reason to doubt its accuracy; however, J & J Commercial Properties, Inc. has not verified such information and makes no guarantee, warranty or representation about such information. The prospective buyer or lessee should independently verify all dimensions, specifications, floor plans, and all information prior to the lease or purchase of the property. All offerings are subject to prior sale, lease, or withdrawal from the market without prior notice.

22225-22236 South Ellsworth Road Queen Creek, Az. 85142

3 Land Parcels Available For Sale



Tyson Breinholt
d: 480.966.7513
m: 602.315.7131
tbreinholt@yahoo.com



DISCLAIMER:
The information contained herein has been obtained from various sources. We have no reason to doubt its accuracy; however, J & J Commercial Properties, Inc. has not verified such information and makes no guarantee, warranty or representation about such information. The prospective buyer or lessee should independently verify all dimensions, specifications, floor plans, and all information prior to the lease or purchase of the property. All offerings are subject to prior sale, lease, or withdrawal from the market without prior notice.