

4110 Moorpark Ave

4110 Moorpark Ave, San Jose, CA 95117



Presented By:
Corsia Orthodontics



4110 Moorpark Ave

4110 Moorpark Ave, San Jose, CA 95117

Property Details

The building is an approximately ±10,400 SF multi-tenant medical office project which includes 4 buildings of various sizes with attractive stone architecture. The improvements sit on a 0.93 acre parcel with excellent access to Hwy 280 via Saratoga Ave or Winchester Blvd and abundant parking. A short drive to Santana Row and Valley Fair, the site is in proximity to some of the area's best and most prestigious retail and restaurants.

Suite A (1250 sq ft) is available for GP office and Suite E (2100 sq ft) is designated for Pediatric dental space. Suites can be leased to separate tenants. Owner on site. TI available. ADA compliant. Plentiful parking. Storage available.

Price: Upon Request

- Dental Plaza
- ADA compliant
- Storage available
- Parking
- Dental community
- Compressed air and vacuum

View the full listing here: <https://www.loopnet.com/Listing/4110-Moorpark-Ave-San-Jose-CA/17393003/>

Rental Rate:	Upon Request
Property Type:	Office
Property Sub-type:	Medical
Building Class:	B
Rentable Building Area	3,350 SF
:	
Year Built:	1971
Walk Score ®:	74 (Very Walkable)
Transit Score ®:	40 (Some Transit)
Rental Rate Mo:	Upon Request

4110 Moorpark Ave

4110 Moorpark Ave, San Jose, CA 95117

Listing spaces

1st Floor Ste A

Space Available: 1,250 SF
Rental Rate: Upon Request
Date Available: Now
Service Type: Negotiable
Space Type: Relet
Space Use: Medical
Lease Term: 5 - 10 Years

4110 Moorpark Ave: 1250 square foot GP office and 2100 square foot Pediatric dental space available. Owner on site. TI available. ADA compliant. Plentiful parking. Storage available. Other great facts: Right off Interstate 280 and Saratoga Ave. Between Harker Middle and High schools. Less than 10-minute drive from Apple campus and other large tech companies. Neighboring an active dental community.

1st Floor Ste E

Space Available: 2,100 SF
Rental Rate: Upon Request
Date Available: Now
Service Type: Negotiable
Space Type: Relet
Space Use: Medical
Lease Term: 5 - 10 Years

4110 Moorpark Ave

4110 Moorpark Ave, San Jose, CA 95117

Major Tenant Information

Tenant	SF Occupied	Lease Expired
Christopher Corsa DMD, MS	-	
for KOFMAN ELLA D D S	2,495	
Pries Dental Care	2,495	
Stephanie Loller - Inspira Advanced Dentistry	-	

4110 Moorpark Ave

4110 Moorpark Ave, San Jose, CA 95117

Location



4110 Moorpark Ave

4110 Moorpark Ave, San Jose, CA 95117

Property Photos



4110 Moorpark Ave.



Suite E

4110 Moorpark Ave

4110 Moorpark Ave, San Jose, CA 95117

Property Photos



Parking & Storage



Outdoor

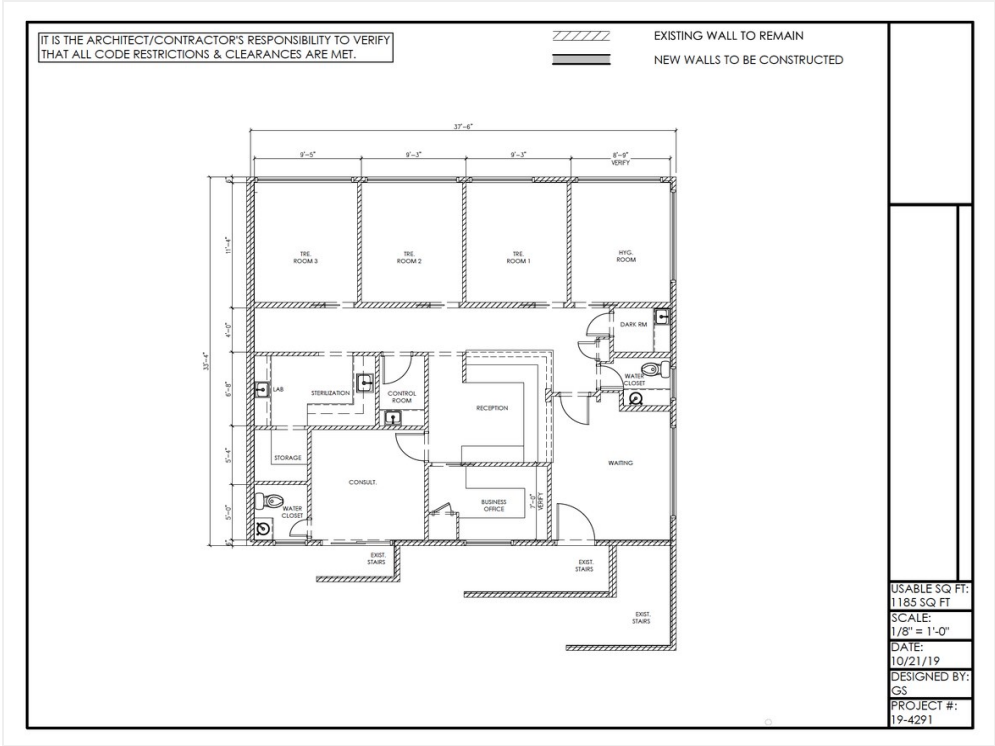
4110 Moorpark Ave

4110 Moorpark Ave, San Jose, CA 95117

Property Photos



Junipero Serra Dental Plaza

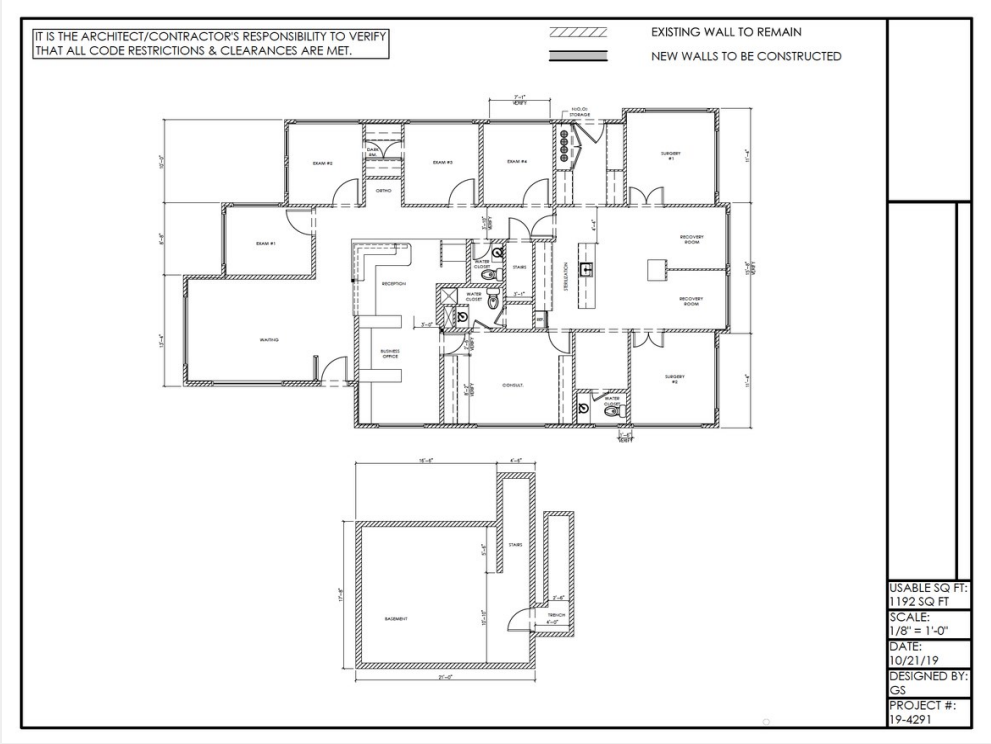


Floor Plan 1

4110 Moorpark Ave

4110 Moorpark Ave, San Jose, CA 95117

Property Photos



Floor Plan 2

4110 Moorpark Ave

4110 Moorpark Ave, San Jose, CA 95117

Christopher Corsa
christopher.corsa@gmail.com
(650) 204-1357

Corsa Orthodontics
4110 Moorpark Ave
San Jose, CA 95117

