

3590 N. FIRST STREET

SAN JOSE, CALIFORNIA

**MARKET READY
FLOOR VIRTUAL TOUR**
(CLICK HERE)

±8,259 - ±50,660 SF AVAILABLE

Kelly Yoder
Director

P +1 408 615 3427

kelly.yoder@cushwake.com

LIC #01821117

Steve Horton

Executive Vice Chairman

P +1 408 615 3412

steve.horton@cushwake.com

LIC #01127340



**CUSHMAN &
WAKEFIELD**

300 Santana Row, Fifth Floor
San Jose, California 95128

P +1 408 615 3400

F +1 408 615 3444

www.cushmanwakefield.com

3590 N. FIRST STREET

HIGHLIGHTS

SUITE 100: ±8,259 SF | AVAILABLE NOW

SUITE 120: ±10,604 SF | AVAILABLE NOW

SUITE 200: ±16,553 SF | AVAILABLE NOW

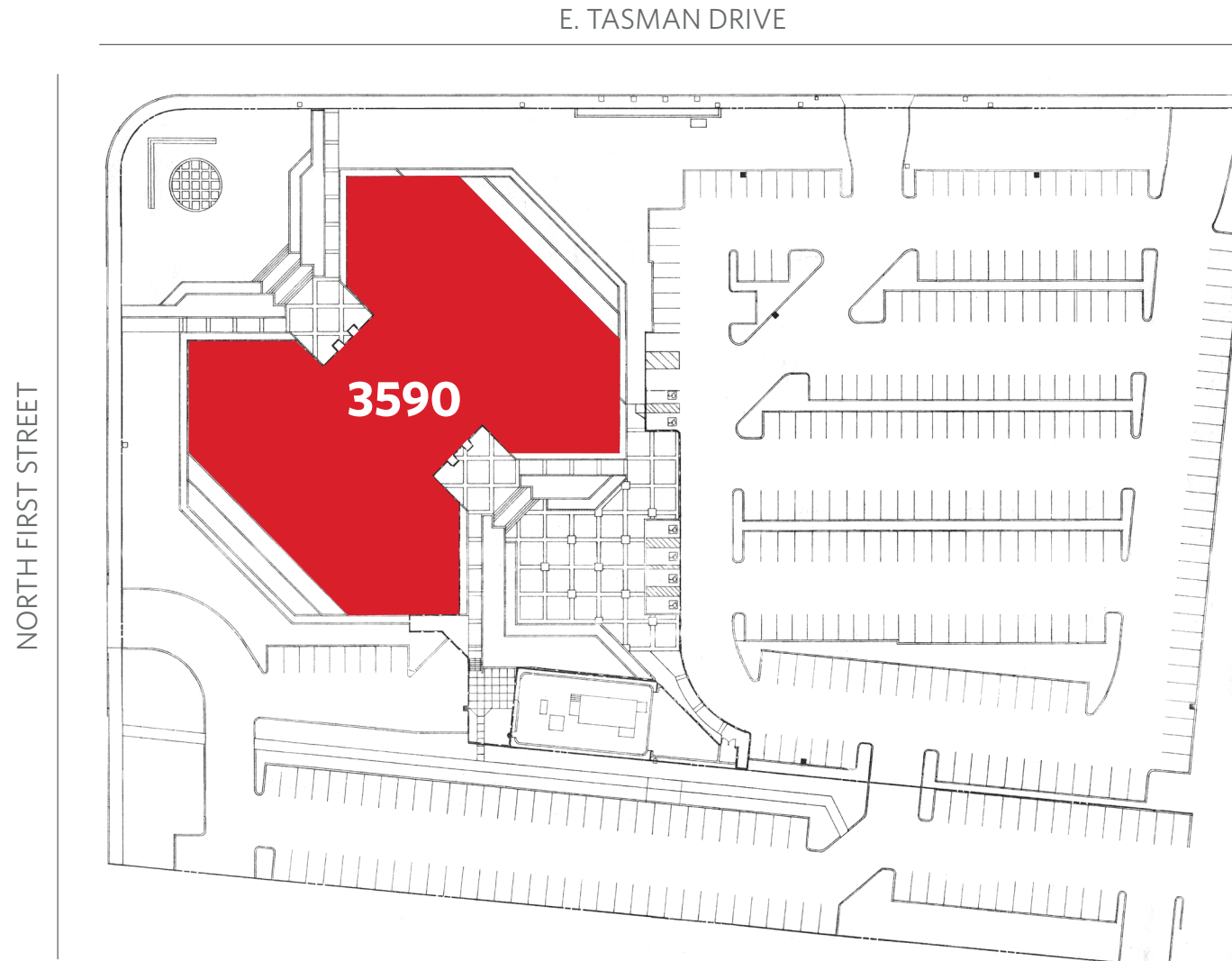
SUITE 300: ±15,244 SF | AVAILABLE NOW

- Market Ready Complete!
- Prime North First Street Location
- Building Signage Available
- 3-Story Class A Building
- Tasman Light Rail Station Across the Street
- Walking Distance to Restaurants & Retail
- Dock Loading / Elevator Access
- Large Outdoor Balcony
- ±4/1,000 Parking
- 16 Minutes to Milpitas BART Station



3590 N. FIRST STREET

SITE PLAN



3590 N. FIRST STREET



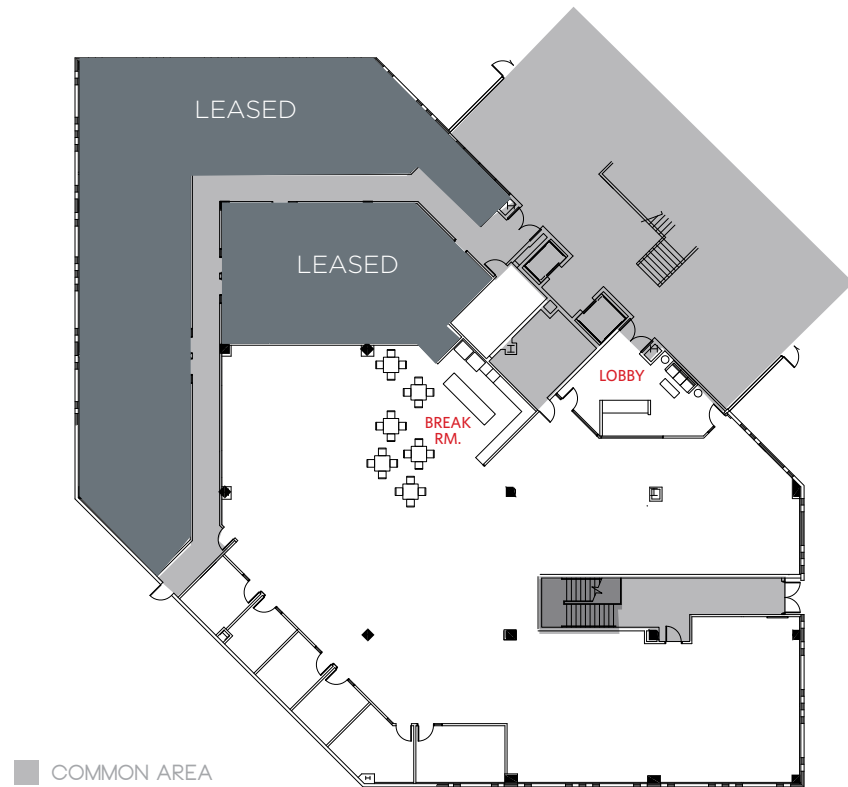
3590 N. FIRST STREET

FIRST FLOOR

SUITE 100: ±8,259 SF

AVAILABLE NOW

SCHEDULED OCCUPANCY SEPTEMBER 2020



- Break Room with Built-In Seating
- New Open Ceiling Tech Interiors Planned

3590 N. FIRST STREET

FIRST FLOOR

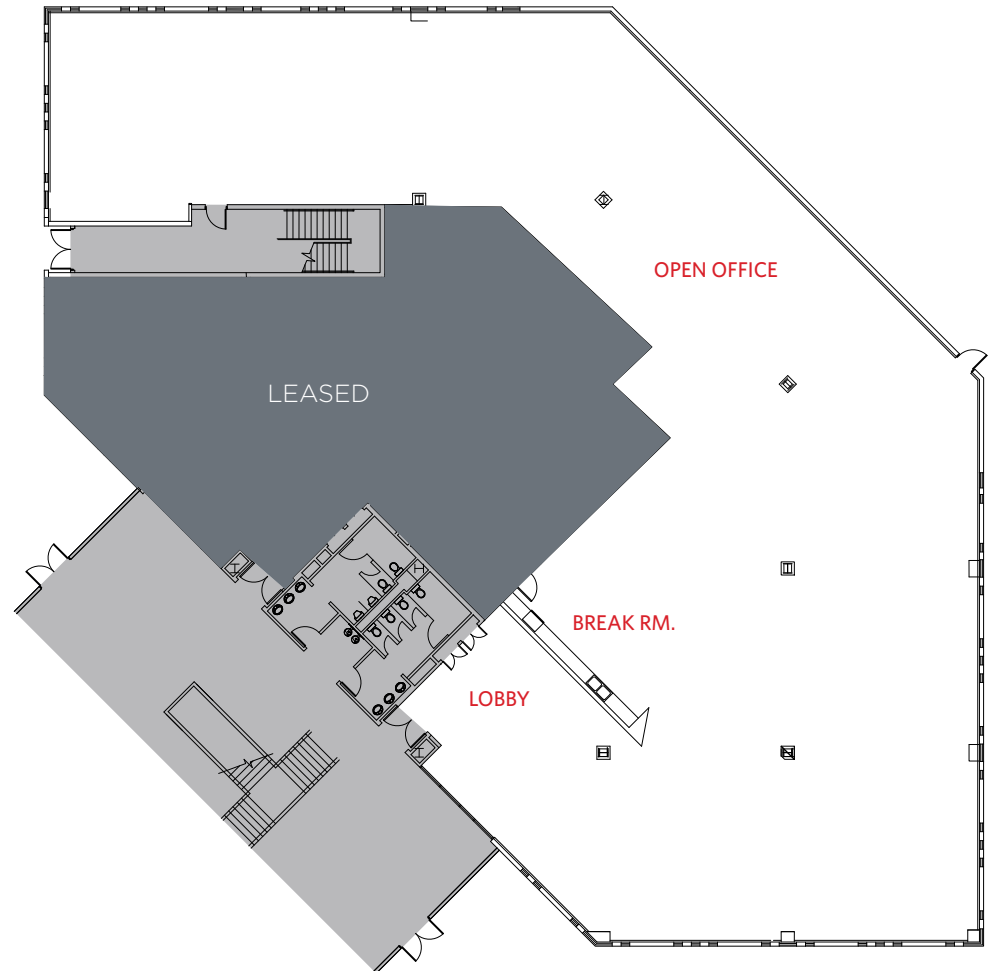
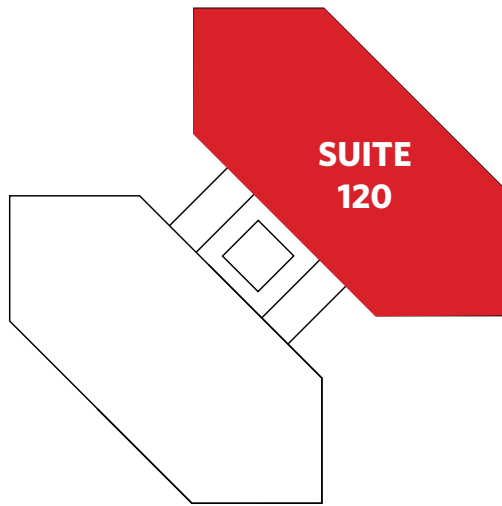
SUITE 120: ±10,604 SF

AVAILABLE NOW

SCHEDULED OCCUPANCY JUNE 2020

MARKET READY FLOOR PLAN

- Break Room
- New Open Ceiling Tech Interiors Planned



COMMON AREA

3590 N. FIRST STREET

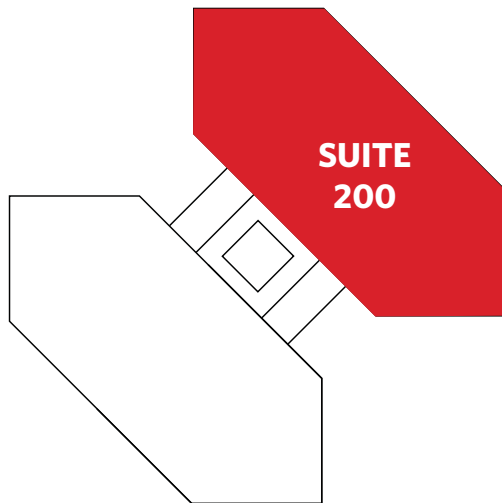
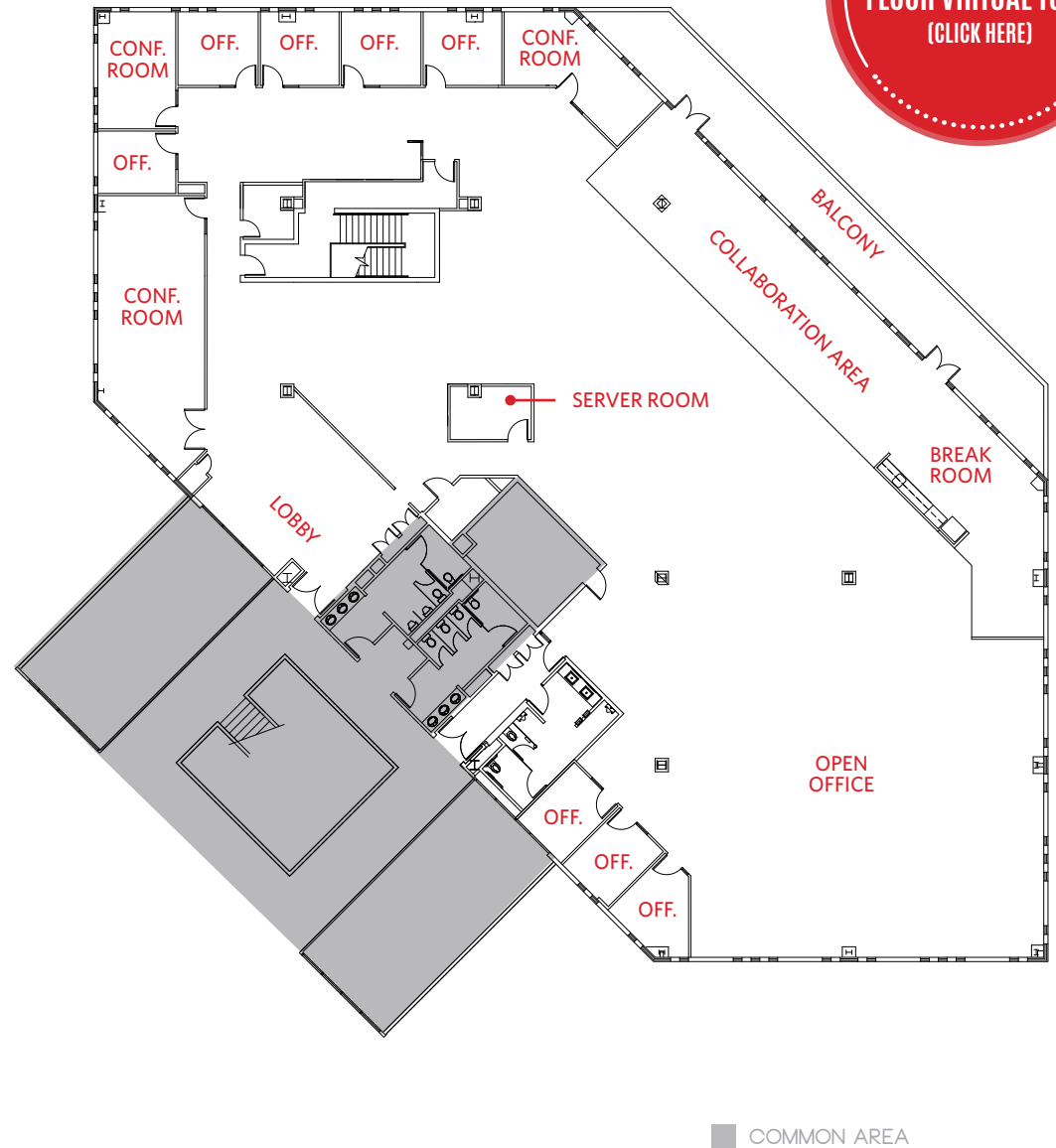
SECOND FLOOR

SUITE 200: ±16,553 SF

AVAILABLE NOW

MARKET READY FLOOR PLAN

- Large Outdoor Balcony
- 8 Offices
- 3 Conference Rooms
- 1 Server Room
- Open Break Room



3590 N. FIRST STREET

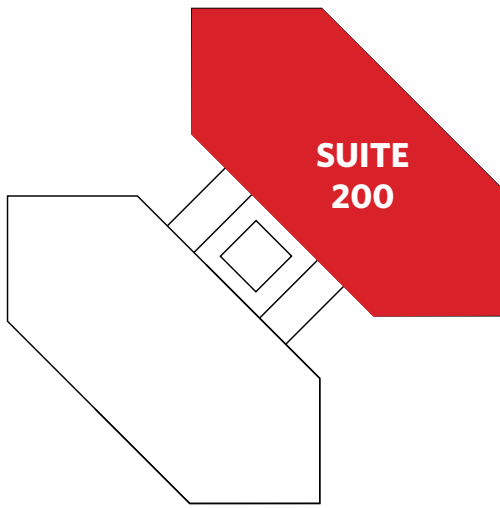
SECOND FLOOR

SUITE 200: ±16,553 SF

AVAILABLE NOW

HYPOTHETICAL CUBICLE PLAN

- 57 (6x8) Cubicles
- Large Outdoor Balcony
- 8 Offices
- 3 Conference Rooms
- 1 Server Room
- Open Break Room



COMMON AREA

3590 N. FIRST STREET

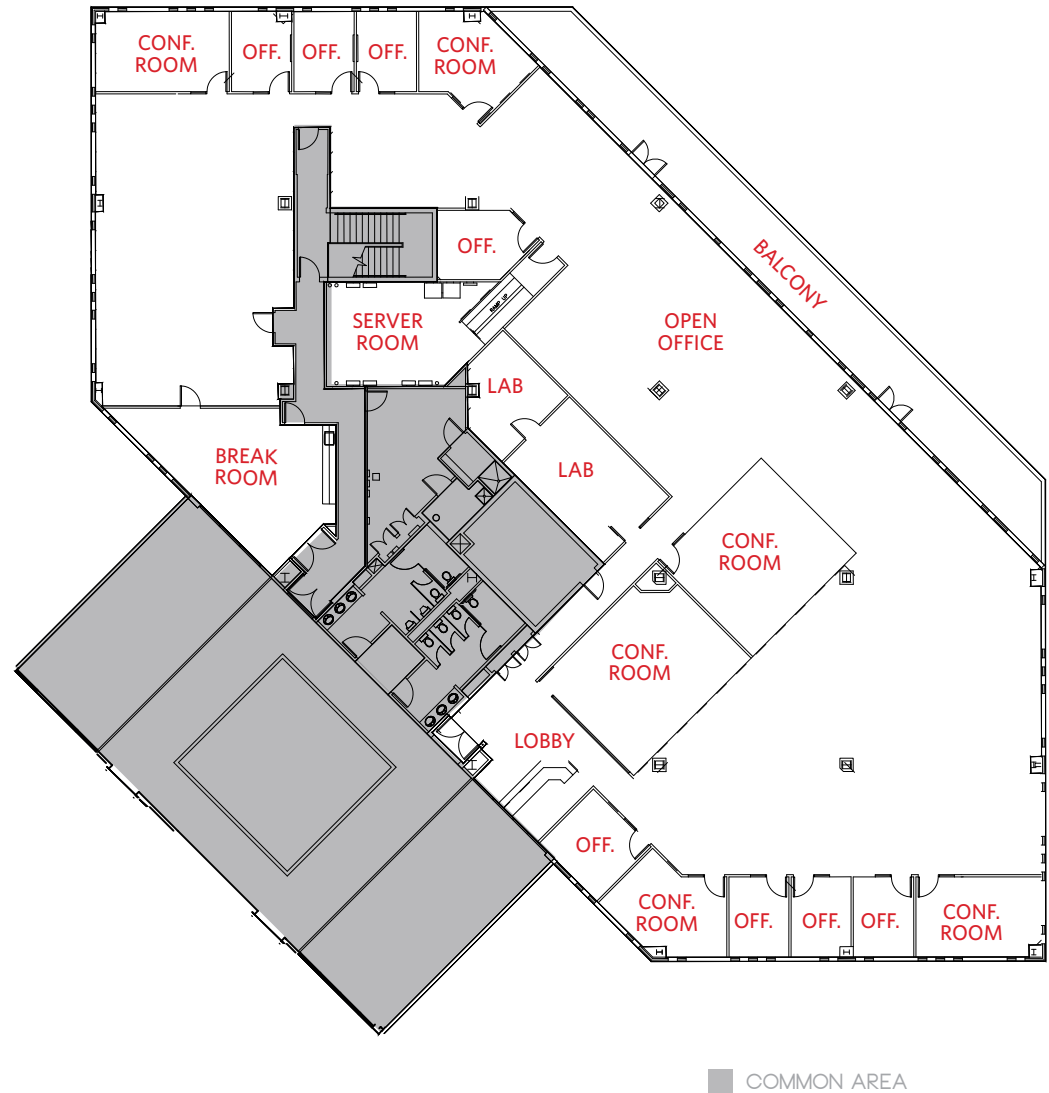
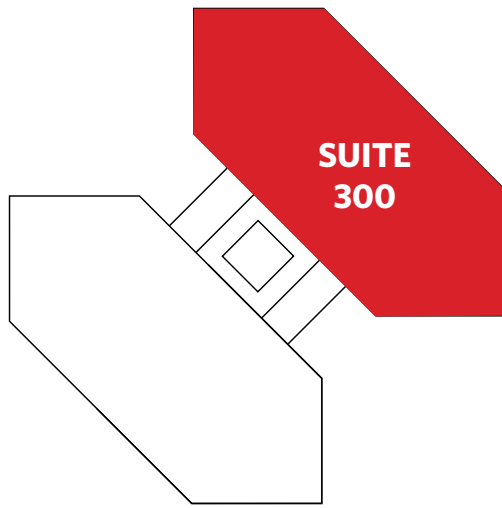
THIRD FLOOR

SUITE 300: ±15,244 SF

AVAILABLE NOW

EXISTING FLOOR PLAN

- Large Outdoor Balcony
- 8 Offices
- 6 Conference Rooms
- 2 Labs
- 1 Server Room
- 1 Break Room



3590 N. FIRST STREET

AMENITIES & TRANSPORTATION



16 MINUTES ON LIGHT RAIL TO MILPITAS BART STATION

3590 N. FIRST STREET

SAN JOSE, CALIFORNIA

±8,259 - ±50,660 SF AVAILABLE

Kelly Yoder

Director

P +1 408 615 3427

kelly.yoder@cushwake.com

LIC #01821117

Steve Horton

Executive Vice Chairman

P +1 408 615 3412

steve.horton@cushwake.com

LIC #01127340



300 Santana Row, Fifth Floor
San Jose, California 95128

P +1 408 615 3400

F +1 408 615 3444

www.cushmanwakefield.com