

1605 Buford Highway

Cumming, Georgia 30041

Ackerman Retail



NOW AVAILABLE FOR SALE OR LEASE

1.77 ± ACRES

AREA RETAILERS

Publix ALDI

Walgreens
DRUG STORES

CHASE

PROPERTY HIGHLIGHTS

- 1.77 ± acres available for sale or lease
- Up to 8,750 ± SF available with drive thru and pad site or up to 15,260 ± SF available with drive thru
- Located less than 2 miles east of GA 400
- Population of 106,297 within five miles with an average household income of \$119,785

COURTNEY BRUMBELOW

770.913.3905 | cbrumbelow@ackermanco.net

1605 Buford Highway

Cumming, Georgia 30041

Ackerman Retail



AREA DEMOGRAPHICS (2017):

POPULATION

1-MILE	5,647
3-MILE	40,041
5-MILE	106,297

HOUSEHOLDS

1-MILE	1,892
3-MILE	12,717
5-MILE	34,296

AVG HH INCOME

1-MILE	\$110,579
3-MILE	\$112,417
5-MILE	\$119,785

©2018 Ackerman & Co. All rights reserved. While we have no reason to doubt the accuracy of the information provided from sources we deem reliable, we cannot guarantee it and therefore assume no liability for errors, omissions or changes to this content.

LEASING CONTACT:

COURTNEY BRUMBELow

770.913.3905

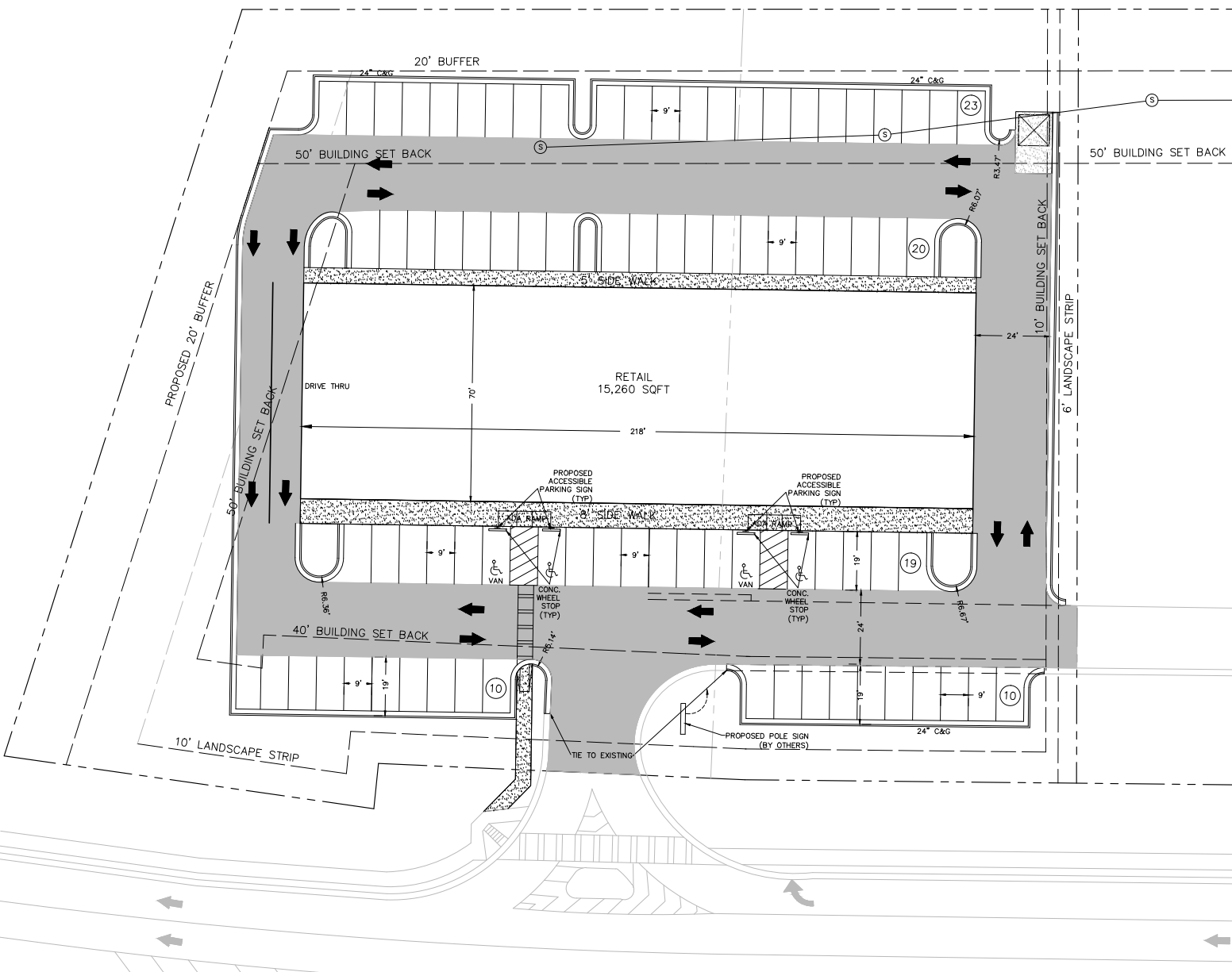
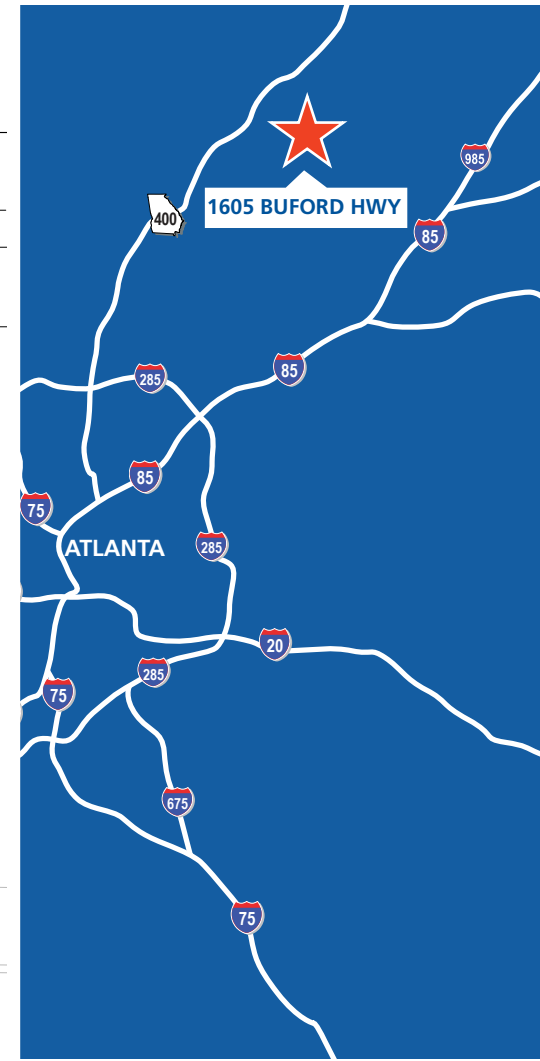
cbrumbelow@ackermanco.net

www.ackermanretail.com

1605 Buford Highway

Cumming, Georgia 30041

Ackerman Retail



LEASING CONTACT:

COURTNEY BRUMBELow

770.913.3905

cbrumbelow@ackermanco.net

www.ackermanretail.com