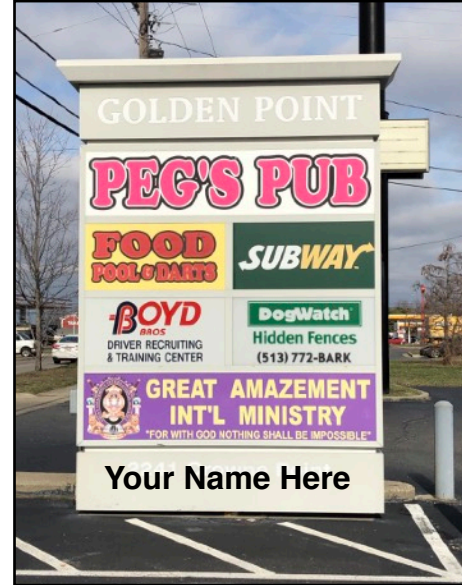


FOR LEASE

Golden Point
2241 Crowne Point Drive
Cincinnati, OH 45241



Property Highlights

- 1,200 SF end cap space with office finish - easily converts to retail space
- 3 offices and reception area
- Central location with easy access to I-75 & I-275
- Convenient and ample parking
- Marquis & fascia signage
- Immediate occupancy
- Neighboring tenants: Subway, Cracker Barrel, Thorntons, Ruby Tuesday & more!
- Large daytime employers within a 1 mile radius
- Asking rate: \$11.00 PSF MG
(TIA available for qualified tenant & term)



North Ridge Realty Group

5430 West Chester Road | West Chester, OH 45069 | 513.860.5050

Marshall Stretch | c: 513.504.8232 | marshall@nrrg.com

Susan Stretch | c: 513.315.8522 | susan@nrrg.com



Property Details

Location	Sharonville, OH (Hamilton County)
Building Type	Multi-tenant retail center
Available	1,200 SF office finish that converts easily to retail
Utilities	Separately metered
Signage	Street reader, fascia
Occupancy	Immediate
Lease Term	3-5 years
Asking Rate	\$11.00 PSF NNN (TIA available for qualified tenant & term)

*The assurance of expertise.
The reputation for results.*

www.nrrg.com



Disclaimer: The Realtor involved in selling the premises is relying on all information provided herein or supplied by owner or owner's sources in connection with the Real Estate. We cannot guarantee this information.