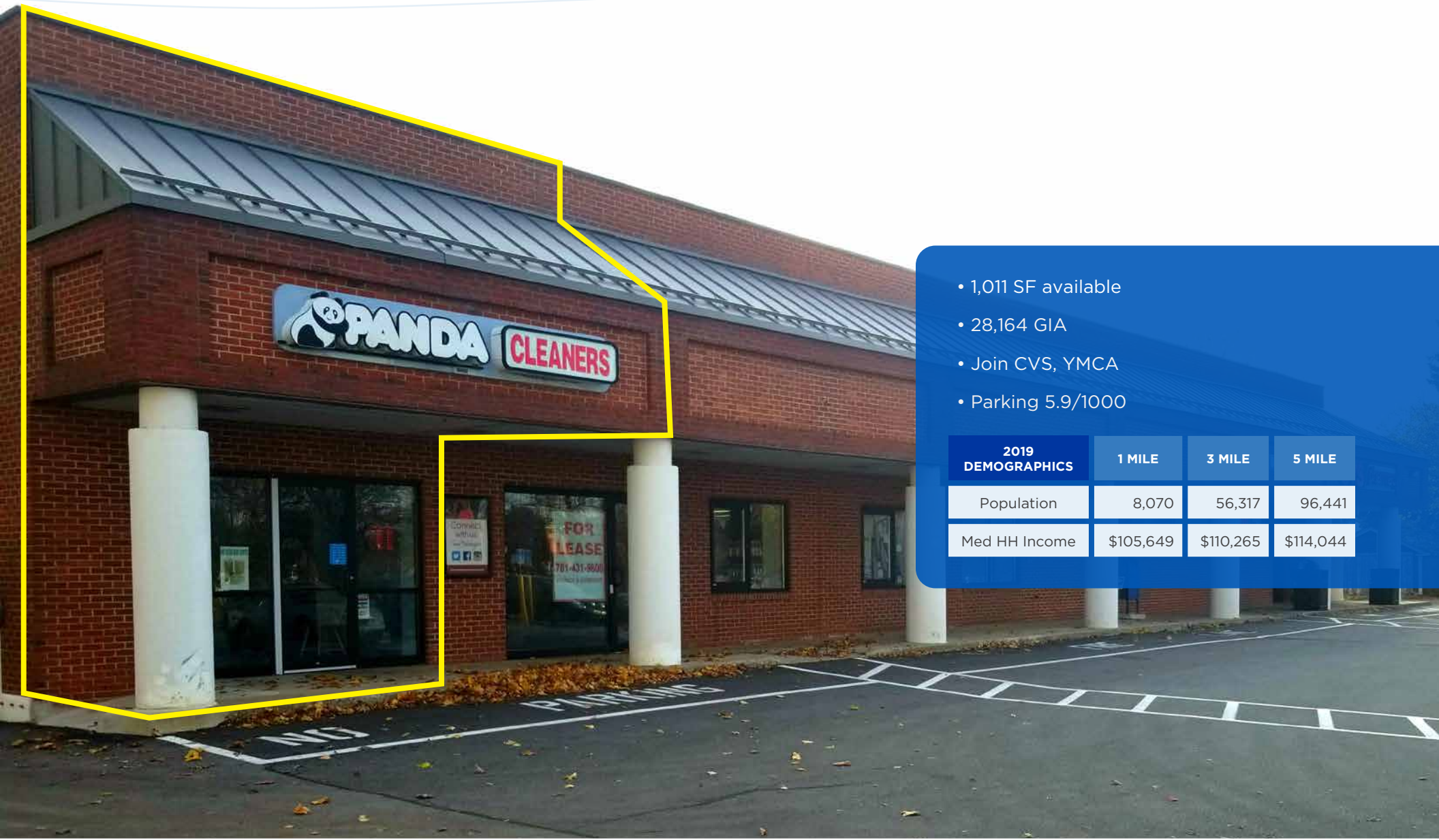


NEWBURYPORT, MA
13 Pond Street



- 1,011 SF available
- 28,164 GIA
- Join CVS, YMCA
- Parking 5.9/1000

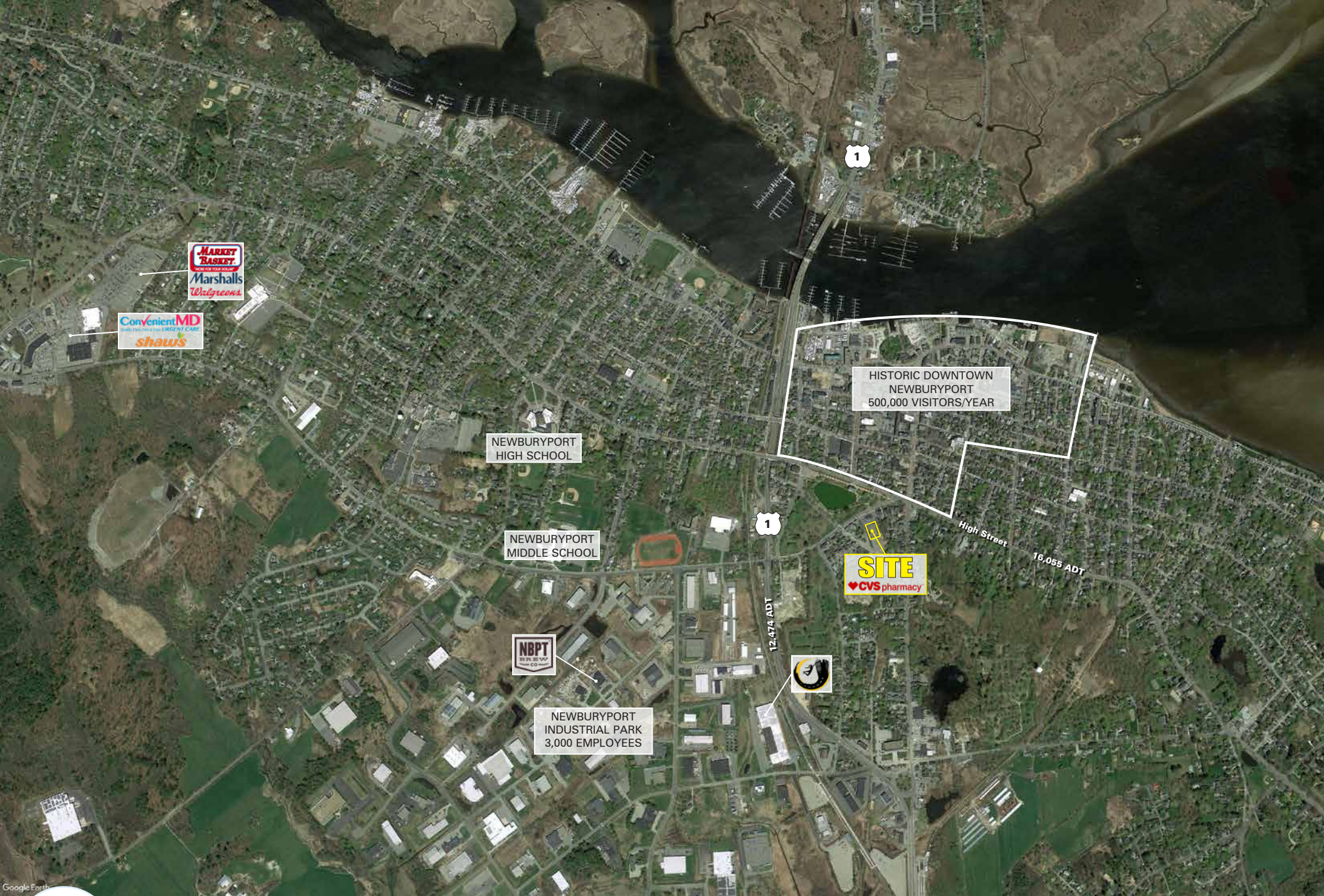
2019 DEMOGRAPHICS	1 MILE	3 MILE	5 MILE
Population	8,070	56,317	96,441
Med HH Income	\$105,649	\$110,265	\$114,044

Rachael Willard
617.239.3603
rwillard@atlanticretail.com

ATLANTA | BOSTON | CHARLOTTE | LOS ANGELES | PITTSBURGH | WEST PALM BEACH

ATLANTICRETAIL.COM

© ATLANTIC RETAIL 2020 The information above has been obtained from sources believed reliable. While we do not doubt its accuracy, we have not verified it and make no guarantee, warranty or representation about it.

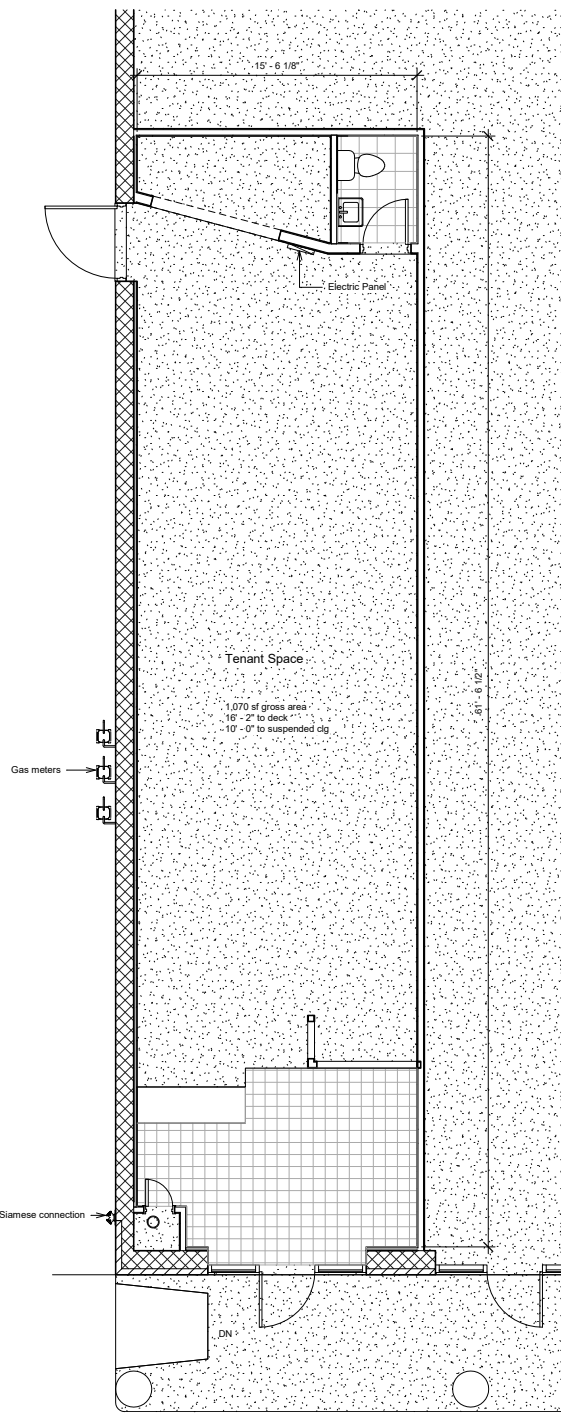


NEWBURYPORT, MA
13 Pond Street

SITE AERIAL

Rachael Willard
617.239.3603
rwillard@atlanticretail.com

ATLANTICRETAIL.COM



NEWBURYPORT, MA
13 Pond Street

FLOOR PLAN

Rachael Willard

617.239.3603
rwillard@atlanticretail.com

ATLANTICRETAIL.COM