



159 E Sunset Drive

Waukesha, WI

Property Features

- Sunset Fields is well-positioned in a strong retail corridor surrounded by retailers including Meijer, Pick n Save, Xperience Fitness, Kohl's Off/Aisle, Dollar Tree, Rogan's Shoes, and Walgreens.
- Multiple access points.

Demographics

	1 Mile	3 Miles	5 Miles
Population	10,763	61,179	99,056
Households	4,047	24,482	39,632
Median HH Inc.	\$57,651	\$58,005	\$66,130
Employees	4,991	39,641	76,229

For more information

Mitchell Starczynski

414 395 4692

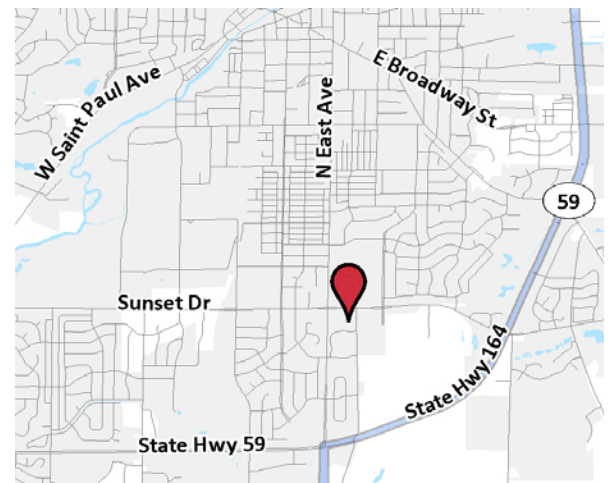
mks@mlgcommercial.com

Adam Matson

414 395 4686

arm@mlgcommercial.com

Building Size	31,136 SF
Available Space	1,914 SF & 7,300 SF
Signage	Awning & Monument
Parking	162 Stalls (5.23:1,000)
Traffic Counts	14,100 on Sunset Dr.
Lease Rate	\$9.18 PSF NNN
NNN Rate	\$4.84 PSF



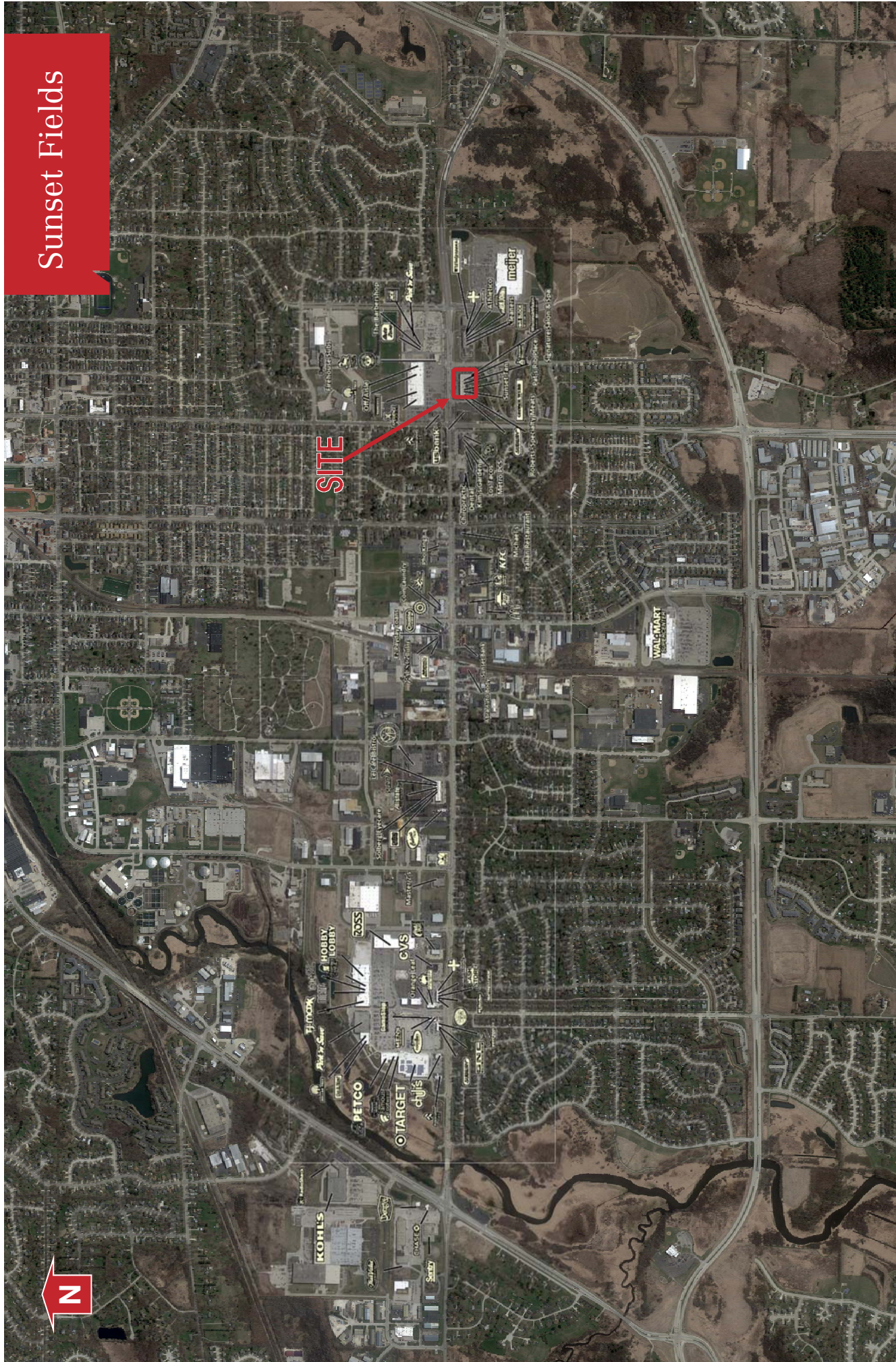
757 North Broadway Street, Suite 700
Milwaukee, WI 53202
414 347 9400
mlgcommercial.com
Offices in Milwaukee and Madison, WI

E Sunset Drive



Suite #	Address	Tenant	Suite SF
1	1424 Big Bend Rd.	Signature Salon	3,760
2	159 E Sunset Dr.	AVAILABLE	7,300
3	155 E Sunset Dr.	Sherwin Williams	4,011
4	151 E Sunset Dr.	Pat's Ribs	1,244
5	149 E Sunset Dr.	Gametown	1,645
6	147 E Sunset Dr.	EmbroidMe	1,780
7	145 E Sunset Dr.	Krystal Kleaners	1,360
8	143 E Sunset Dr.	Sunset Tan	1,200
9	141 E Sunset Dr.	Runkel Bros Trading Co.	1,139
10	139 E Sunset Dr.	George Webb	1,955
11	137 E Sunset Dr.	AVAILABLE	1,914
12	135 E Sunset Dr.	Robert's Specialty Meats	1,909
13	131 E Sunset Dr.	Subway	1,909

Sunset Fields



757 North Broadway Street, Suite 700
Milwaukee, WI 53202
414 347 9400
mlgcommercial.com
Offices in Milwaukee and Madison, WI

NAI MLG Commercial

COMMERCIAL REAL ESTATE SERVICES WORLDWIDE

Information shown herein was provided by the Seller/Lessor and/or other third parties and has not been verified by the broker unless otherwise indicated.

State of Wisconsin Broker Disclosure to Non-Residential Customers

Prior to negotiating on your behalf the brokerage firm, or an agent associated with the firm, must provide you the following disclosure statement.

BROKER DISCLOSURE TO CUSTOMERS

You are the customer of the brokerage firm (hereinafter Firm). The Firm is either an agent of another party in the transaction or a subagent of another firm that is the agent of another party in the transaction. A broker or a salesperson acting on behalf of the Firm, may provide brokerage services to you. Whenever the Firm is providing brokerage services to you, the Firm and its brokers and salespersons (hereinafter Agents) owe you, the customer, the following duties:

- The duty to provide brokerage services to you fairly and honestly.
- The duty to exercise reasonable skill and care in providing brokerage services to you.
- The duty to provide you with accurate information about market conditions within a reasonable time if you request it, unless disclosure of the information is prohibited by law.
- The duty to disclose to you in writing certain Material Adverse Facts about a property, unless disclosure of the information is prohibited by law (see "Definition of Material Adverse Facts" below).
- The duty to protect your confidentiality. Unless the law requires it, the Firm and its Agents will not disclose your confidential information or the confidential information of other parties (see "Confidentiality Notice To Customers" below).
- The duty to safeguard trust funds and other property held by the Firm or its Agents.
- The duty, when negotiating, to present contract proposals in an objective and unbiased manner and disclose the advantages and disadvantages of the proposals.

Please review this information carefully. An agent of the Firm can answer your questions about brokerage services, but if you need legal advice, tax advice, or a professional home inspection, contact an attorney, tax advisor, or home inspector.

This disclosure is required by section 452.135 of the Wisconsin statutes and is for information only. It is a plain-language summary of a broker's duties to a customer under section 452.133 (1) of the Wisconsin statutes.

CONFIDENTIALITY NOTICE TO CUSTOMERS

The Firm and its Agents will keep confidential any information given to the Firm or its Agents in confidence, or any information obtained by the Firm or its Agents that a reasonable person would want to be kept confidential, unless the information must be disclosed by law or you authorize the Firm to disclose particular information. The Firm and its

Wisconsin law requires all real estate licensees to give the following information about brokerage services to prospective customers.

Agents shall continue to keep the information confidential after the Firm is no longer providing brokerage services to you.

The following information is required to be disclosed by law:

1. Material Adverse Facts, as defined in section 452.01 (5g) of the Wisconsin statutes (see "definition of material adverse facts" below).
2. Any facts known by the Firm or its Agents that contradict any information included in a written inspection report on the property or real estate that is the subject of the transaction. To ensure that the Firm and its Agents is aware of what specific information you consider confidential, you may list that information below or provide that information to the Firm or its Agents by other means. At a later time, you may also provide the Firm or its Agents with other information that you consider to be confidential.

CONFIDENTIAL INFORMATION: _____

NON-CONFIDENTIAL INFORMATION (The following information may be disclosed by the Firm and its Agents): __

(INSERT INFORMATION YOU AUTHORIZE TO BE DISCLOSED SUCH AS FINANCIAL QUALIFICATION INFORMATION)

SEX OFFENDER REGISTRY

Notice: You may obtain information about the sex offender registry and persons registered with the registry by contacting the Wisconsin Department of Corrections on the Internet at <http://www.doc.wi.gov/> or by phone at 608-240-5830.

DEFINITION OF MATERIAL ADVERSE FACTS

A "Material Adverse Fact" is defined in Wis. Stat. 452.01 (5g) as an adverse fact that a party indicates is of such significance, or that is generally recognized by a competent licensee as being of such significance to a reasonable party, that it affects or would affect the party's decision to enter into a contract or agreement concerning a transaction or affects or would affect the party's decision about the terms of such a contract or agreement.

An "Adverse Fact" is defined in Wis. Stat. 452.01 (1e) as a condition or occurrence that a competent licensee generally recognizes will significantly and adversely affect the value of the property, significantly reduce the structural integrity of improvements to real estate, or present a significant health risk to occupants of the property; or information that indicates that a party to a transaction is not able to or does not intend to meet his or her obligations under a contract or agreement made concerning the transaction.

No representation is made as to the legal validity of any provision or the adequacy of any provision on any specific transaction