

ENCINO PLACE SHOPPING CENTER

16101 Ventura Blvd., Encino, CA 91436



MICHAEL H. SHARON (818) 572-4050

msharon@illicre.com · DRE#01495419

5990 Sepulveda Blvd., Ste. 600 · Sherman Oaks, CA 91411 · 818.501.2212/Phone · 818.501.2202/Fax · www.illicre.com · DRE #01834124

This information has been secured from sources we believe to be reliable, but we make no representations or warranties, expressed or implied, as to the accuracy of the information. References to square footage are approximate. References to neighboring retailers are subject to change, and may not be adjacent to the vacancy being marketed either prior to, during, or after leases are signed. Lessee must verify the information and bears all risk for any inaccuracies.

FOLLOW US



ENCINO PLACE SHOPPING CENTER

16101 Ventura Blvd., Encino, CA 91436

A multi-tenant three level shopping center with medical and professional offices. It caters to a blend of lifestyles and offers an upscale retail shopping experience, as well as indoor/outdoor dining, with an emphasis on children and young families.

- Excellent Ventura Boulevard visibility
- Underground valet parking (5/1000)
- 24 hour security

SPACE AVAILABLE

- Street Level Retail
 - #105 ± 2,700 SF - \$3.50 + \$0.95 NNN PSF
 - #110 ± 1,051 SF - \$3.50 + \$0.95 NNN PSF
- Third Level Office
 - #336 ± 1,850 SF - \$2.75 PSF MG



MICHAEL H. SHARON (818) 572-4050

msharon@illicre.com · DRE#01495419

5990 Sepulveda Blvd., Ste. 600 · Sherman Oaks, CA 91411 · 818.501.2212/Phone · 818.501.2202/Fax · www.illicre.com · DRE #01834124

This information has been secured from sources we believe to be reliable, but we make no representations or warranties, expressed or implied, as to the accuracy of the information. References to square footage are approximate. References to neighboring retailers are subject to change, and may not be adjacent to the vacancy being marketed either prior to, during, or after leases are signed. Lessee must verify the information and bears all risk for any inaccuracies.

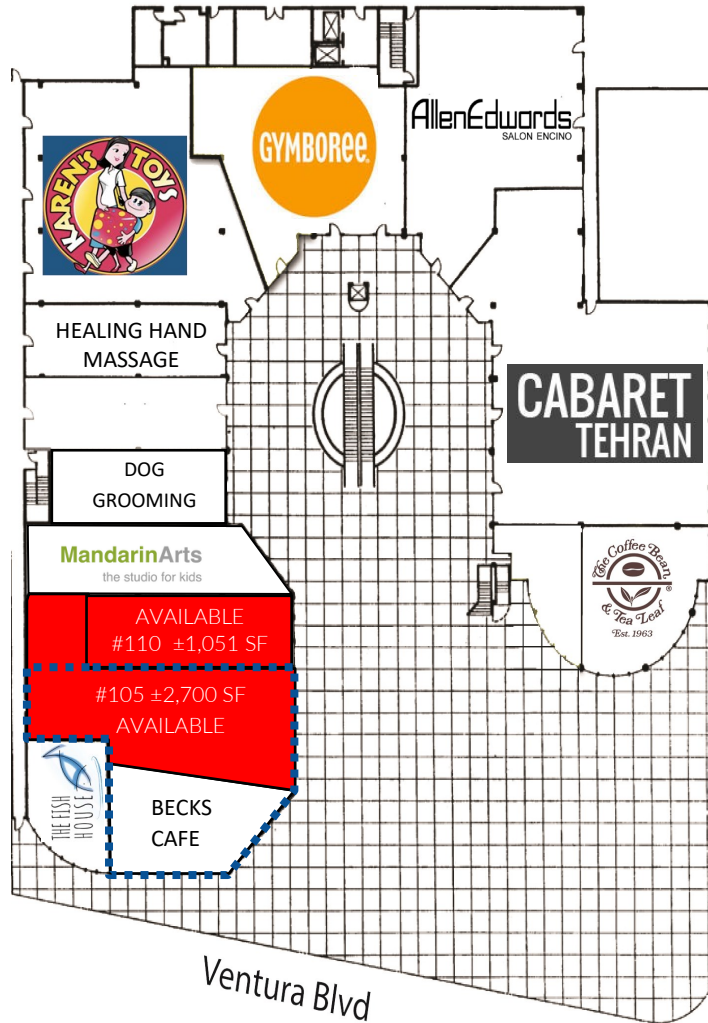
FOLLOW US



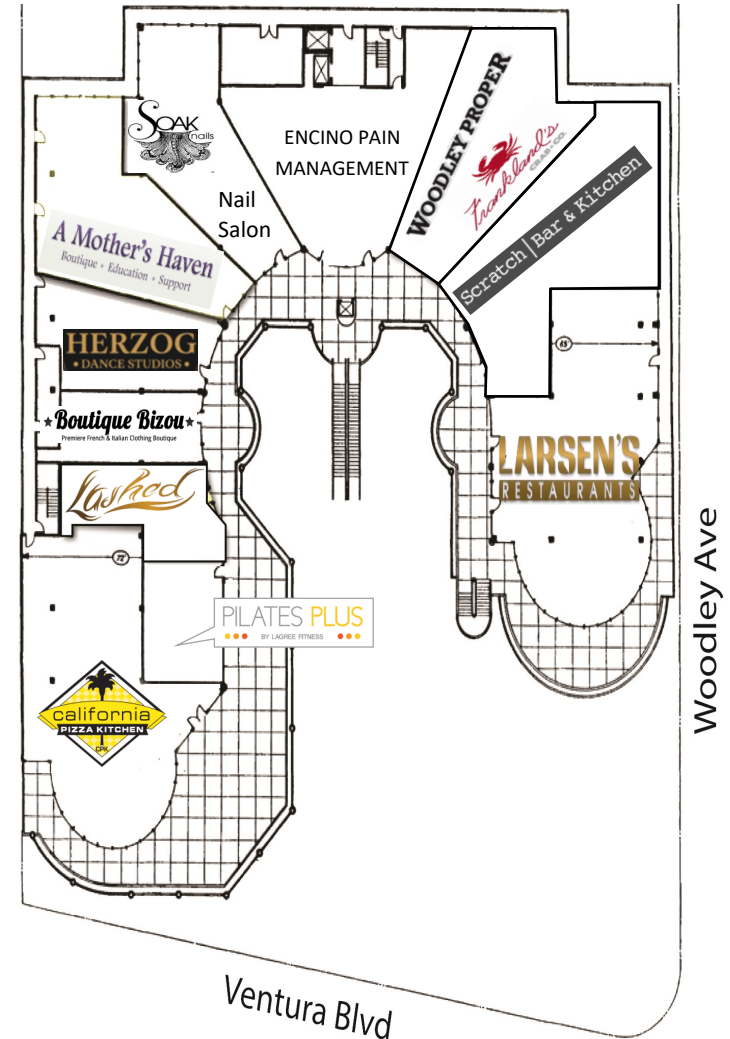
ENCINO PLACE SHOPPING CENTER

16101 Ventura Blvd., Encino, CA 91436

Street Level



Second Level



SPACES AVAILABLE

Street level Retail

- #105 ± 2,700 SF
- #110 ± 1,051 SF

Third Level Offices

- #336 ± 1,850 SF

..... Potentially combined to approximately ± 4,200 SF

MICHAEL H. SHARON (818) 572-4050

msharon@illicre.com · DRE#01495419

5990 Sepulveda Blvd., Ste. 600 · Sherman Oaks, CA 91411 · 818.501.2212/Phone · 818.501.2202/Fax · www.illicre.com · DRE #01834124

This information has been secured from sources we believe to be reliable, but we make no representations or warranties, expressed or implied, as to the accuracy of the information. References to square footage are approximate. References to neighboring retailers are subject to change, and may not be adjacent to the vacancy being marketed either prior to, during, or after leases are signed. Lessee must verify the information and bears all risk for any inaccuracies.



FOLLOW US



ENCINO PLACE SHOPPING CENTER

16101 Ventura Blvd., Encino, CA 91436

UNIT 105: ±2,700 SF | \$3.50 PSF + .95 PSF NNN | FORMER MASSAGE ENVY



MICHAEL H. SHARON (818) 572-4050

msharon@illicre.com · DRE#01495419

5990 Sepulveda Blvd., Ste. 600 · Sherman Oaks, CA 91411 · 818.501.2212/Phone · 818.501.2202/Fax · www.illicre.com · DRE #01834124

This information has been secured from sources we believe to be reliable, but we make no representations or warranties, expressed or implied, as to the accuracy of the information. References to square footage are approximate. References to neighboring retailers are subject to change, and may not be adjacent to the vacancy being marketed either prior to, during, or after leases are signed. Lessee must verify the information and bears all risk for any inaccuracies.

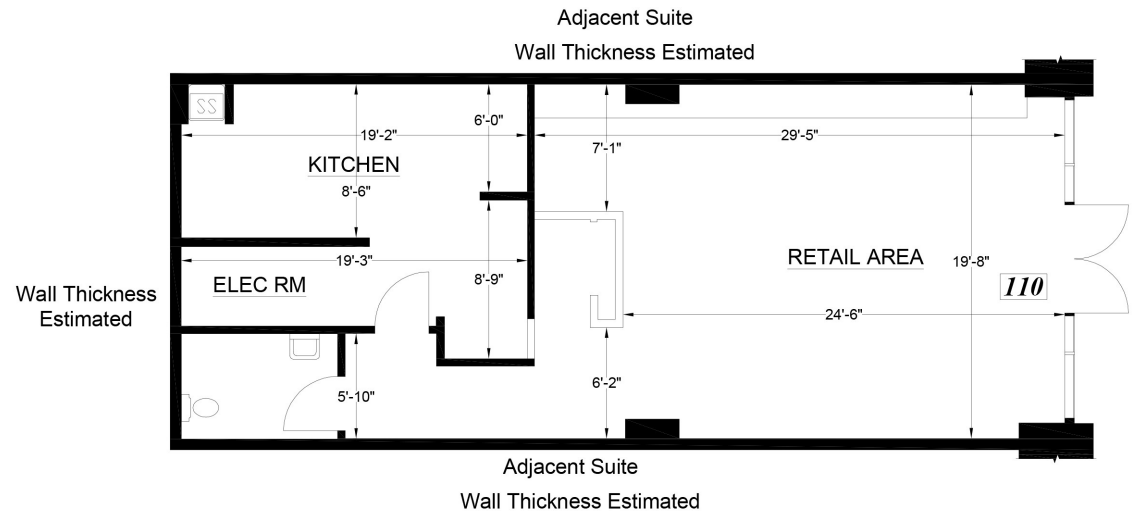
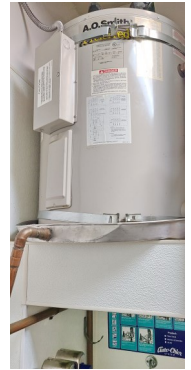
FOLLOW US



ENCINO PLACE SHOPPING CENTER

16101 Ventura Blvd., Encino, CA 91436

UNIT 110: ±1,051 SF | \$3.50 PSF + .95 PSF NNN | FORMERLY URBAN SALADS



MICHAEL H. SHARON (818) 572-4050

msharon@illicre.com · DRE#01495419

5990 Sepulveda Blvd., Ste. 600 · Sherman Oaks, CA 91411 · 818.501.2212/Phone · 818.501.2202/Fax · www.illicre.com · DRE #01834124

FOLLOW US

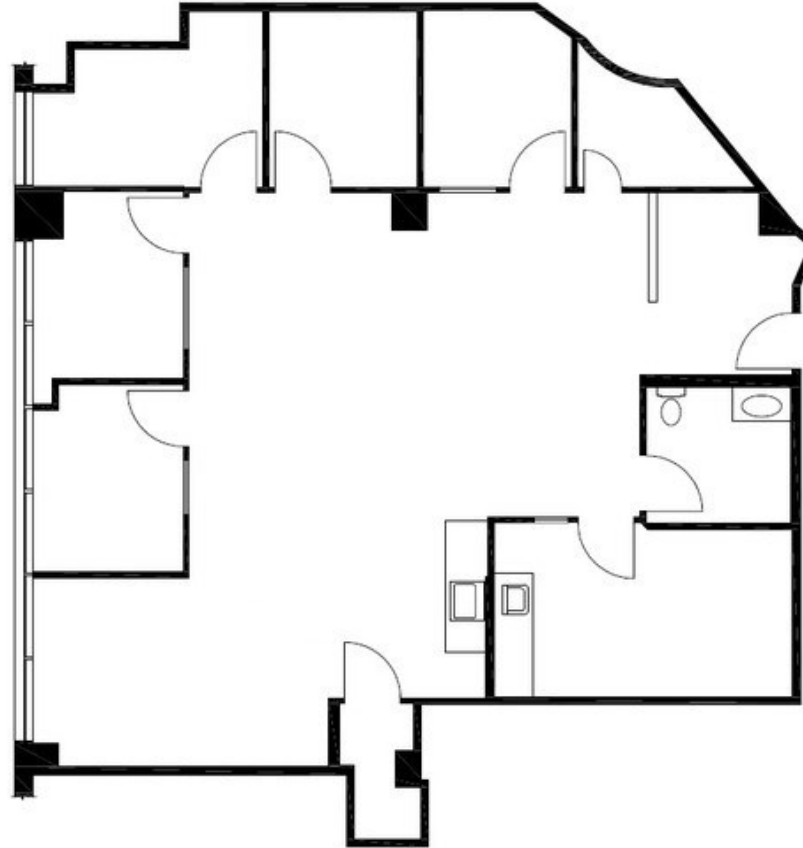


This information has been secured from sources we believe to be reliable, but we make no representations or warranties, expressed or implied, as to the accuracy of the information. References to square footage are approximate. References to neighboring retailers are subject to change, and may not be adjacent to the vacancy being marketed either prior to, during, or after leases are signed. Lessee must verify the information and bears all risk for any inaccuracies.

ENCINO PLACE SHOPPING CENTER

16101 Ventura Blvd., Encino, CA 91436

UNIT 336: ±1,850 SF | \$2.75 PSF MG



MICHAEL H. SHARON (818) 572-4050

msharon@illicre.com · DRE#01495419

5990 Sepulveda Blvd., Ste. 600 · Sherman Oaks, CA 91411 · 818.501.2212/Phone · 818.501.2202/Fax · www.illicre.com · DRE #01834124

This information has been secured from sources we believe to be reliable, but we make no representations or warranties, expressed or implied, as to the accuracy of the information. References to square footage are approximate. References to neighboring retailers are subject to change, and may not be adjacent to the vacancy being marketed either prior to, during, or after leases are signed. Lessee must verify the information and bears all risk for any inaccuracies.



FOLLOW US



ENCINO PLACE SHOPPING CENTER

16101 Ventura Blvd., Encino, CA 91436



MICHAEL H. SHARON (818) 572-4050

msharon@illicre.com · DRE#01495419

5990 Sepulveda Blvd., Ste. 600 · Sherman Oaks, CA 91411 · 818.501.2212/Phone · 818.501.2202/Fax · www.illicre.com · DRE #01834124

This information has been secured from sources we believe to be reliable, but we make no representations or warranties, expressed or implied, as to the accuracy of the information. References to square footage are approximate. References to neighboring retailers are subject to change, and may not be adjacent to the vacancy being marketed either prior to, during, or after leases are signed. Lessee must verify the information and bears all risk for any inaccuracies.

FOLLOW US

