



5601 S. BROADWAY
Littleton, Colorado 80121



PROPERTY FEATURES

- New Aggressive Ownership
- Convenient Access to C-470 and Downtown Littleton
- Professionally Managed
- Plenty of Parking
- Functional Layouts
- Creative Outside-the-Box Approach to Deals
- Building Size: 64,400 RSF
- Elevator: Two
- Stories: Five
- Year Built: 1973

PROPERTY SPECIFICATIONS

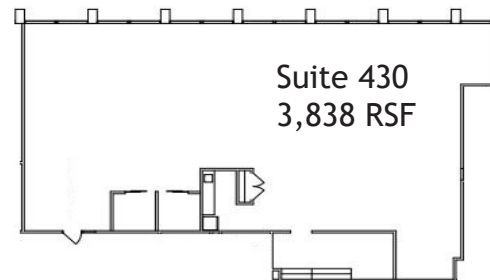
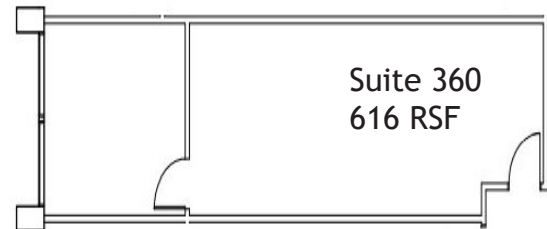
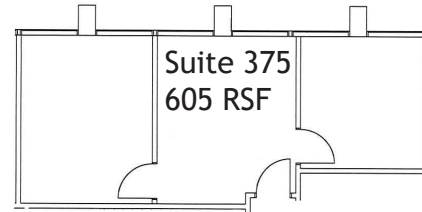
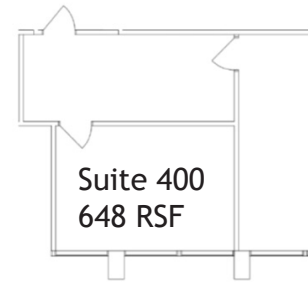
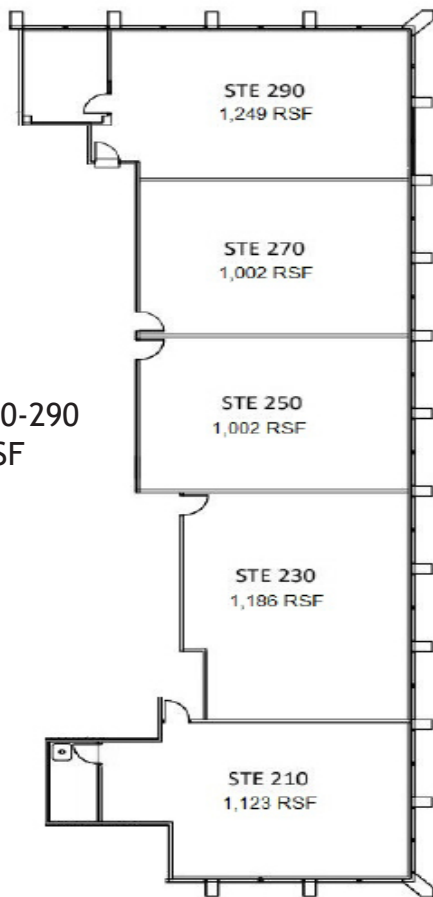
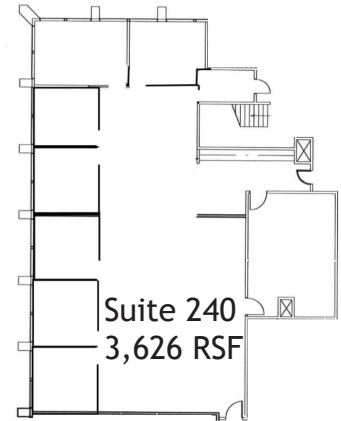
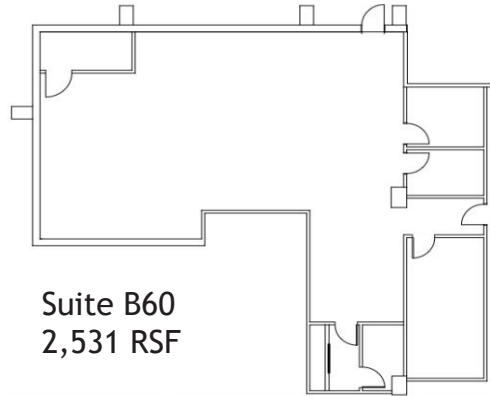
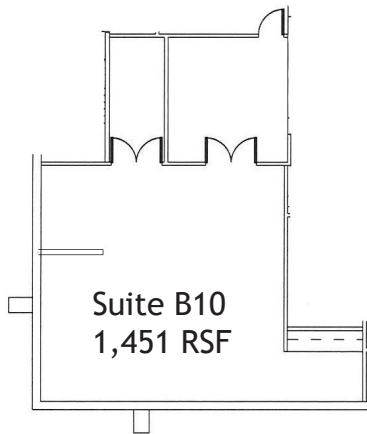
Available:	Suite 210	1,123 RSF
	Suite 230	1,186 RSF
	Suite 250	1,002 RSF
	Suite 270	1,002 RSF
	Suite 290	1,249 RSF
	Suite 210-290	5,562 RSF
	Suite 240	3,626 RSF
	Suite 360	616 RSF
	Suite 375	605 RSF
	Suite 400	648 RSF
	Suite 430	3,838 RSF
Suite B60	2,531 RSF	
Suite B10	1,451 RSF	

Lease Rate: \$15.00/RSF Basement
 \$23.00/RSF Floors 1-4
 Full Service Gross

FOR MORE INFORMATION CONTACT:

T. BLAKE ROGERS
 tblakerogers@gcgcre.com | 720.476.5227

TIM ROGERS
 tprogers@gcgcre.com | 720.476.5225



FOR MORE INFORMATION CONTACT:

T. BLAKE ROGERS
tblakerogers@gcgcre.com | 720.476.5227

TIM ROGERS
tprogers@gcgcre.com | 720.476.5225