

# 3300 WEST TECH DRIVE

SPRINGBORO, OH 45342 ::  
MONTGOMERY COUNTY



- Immediate access to I-75
- Building and surrounding property in excellent condition
- Three craneways

INDUSTRIAL PROPERTY FOR SALE OR LEASE

CRANE-SERVED

TOTAL SQ. FT.: 66,000 Sq. ft.

AVAILABLE SQ. FT.: 66,000 Sq. ft.

OFFICE SQ. FT.: 6,000 Sq. ft.

ACRES: 5.687

YEAR BUILT: 2008

CONSTRUCTION: Steel / Concrete block

DOCK DOOR: One (1)

DRIVE-IN DOORS: Four (4) (12' X 16')

CLEAR HEIGHT: 28' and 20' hook height

PARKING: 50 spaces

COLUMN SPACING: 25' X 66'8"

POWER: 1200 Amps

CRANES: Three (3) craneways



CBRE

## FOR MORE INFORMATION CONTACT:

### Mike Lowe

First Vice President  
+1 513 369 1311  
mike.lowe@cbre.com

### Doug Whitten

Vice President  
+1 513 369 1332  
doug.whitten@cbre.com

### CBRE

201 E Fifth Street, Suite 1200  
Cincinnati, OH 45202  
+1 513 369 1300 | www.cbre.com

CBRE

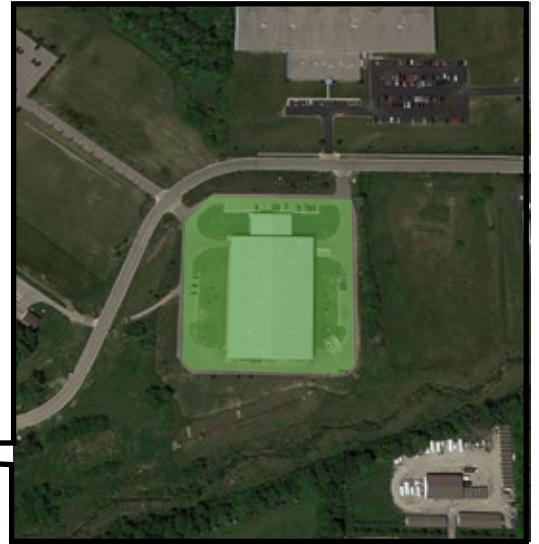
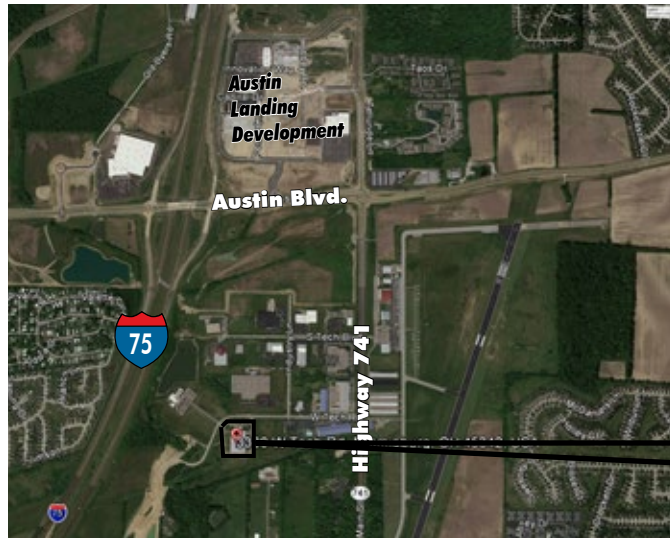
INDUSTRIAL  
PROPERTY  
FOR SALE OR  
LEASE

# 3300 WEST TECH DRIVE CRANE-SERVED

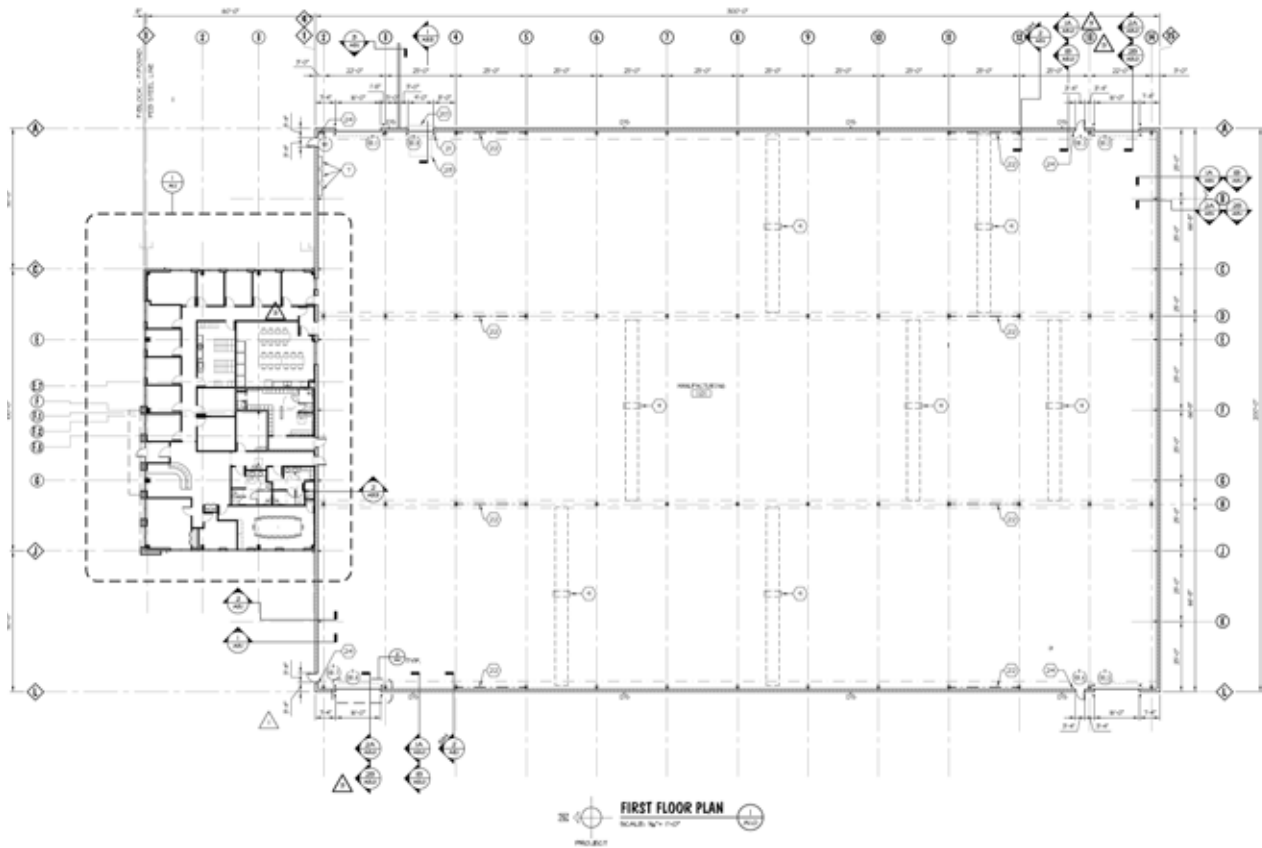
SPRINGBORO, OH 45342 :: MONTGOMERY COUNTY



## LOCATION



## SITE PLAN



© 2015 CBRE, Inc. This information has been obtained from sources believed reliable. We have not verified it and make no guarantee, warranty or representation about it. Any projections, opinions, assumptions or estimates used are for example only and do not represent the current or future performance of the property. You and your advisors should conduct a careful, independent investigation of the property to determine to your satisfaction the suitability of the property for your needs. Photos herein are the property of their respective owners and use of these images without the express written consent of the owner is prohibited. CBRE and the CBRE logo are service marks of CBRE, Inc. and/or its affiliated or related companies in the United States and other countries. All other marks displayed on this document are the property of their respective owners.