

2,534 SF OFFICE SPACE FOR LEASE

# 195 COLUMBIA TURNPIKE

FLORHAM PARK, NJ

## TOTAL SIZE

20,024 SF

## AVAILABLE SPACE

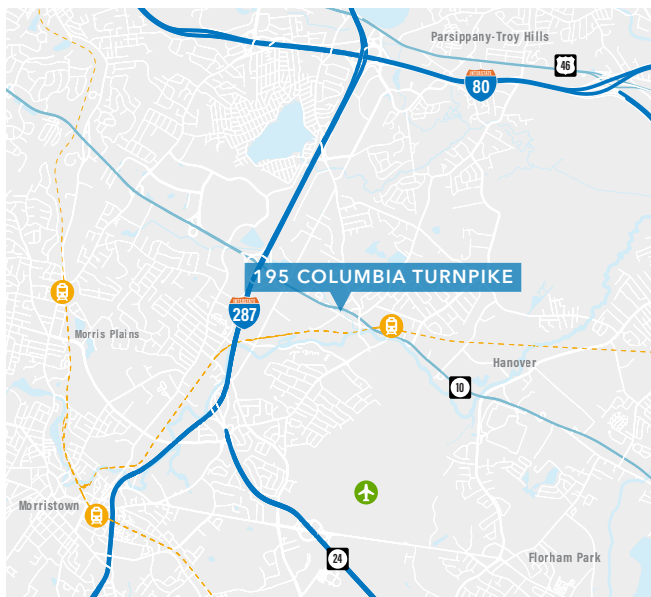
2,534 SF available immediately

## PARKING

4 per 1,000 SF

## RENT

\$23.00-\$25.00 PSF + TE



## SUITE HIGHLIGHTS

- Newly renovated common areas
- Perfect for medical office users
- Stable ownership

## LOCATION OVERVIEW

- Excellent visibility on Columbia Turnpike
- Located within Florham Village Town Center
- Walking distance to retail shopping, restaurants and banks
- Situated just moments from downtown Morristown
- Close proximity to Routes 24, 10, I-80, I-287, I-280 and I-78

## LEASING INFORMATION

### DOUGLAS ROWE

973.947.9202

douglas.rowe@transwestern.com

### LESLIE MERIL

973.947.9238

leslie.meril@transwestern.com

### RYAN PRINCE

973.947.9207

ryan.prince@transwestern.com

### KERI DEKMAR

973.947.9205

keri.dekmar@transwestern.com

The information provided herein was obtained from sources believed reliable; however, Transwestern makes no guarantees, warranties or representations as to the completeness or accuracy thereof. The presentation of this property is submitted subject to errors, omissions, change of price or conditions, prior sale or lease, or withdrawal without notice. Copyright © 2020 Transwestern.



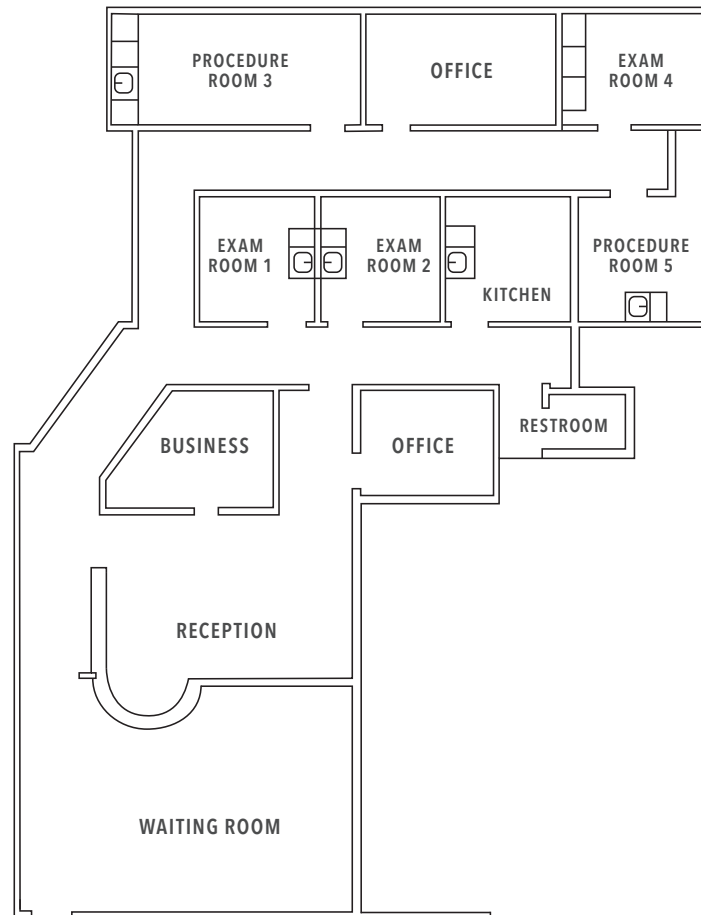
180 PARK AVENUE, 1ST FLOOR | FLORHAM PARK, NJ 07932  
T 973.947.9200 www.transwestern.com

2,534 SF OFFICE SPACE FOR LEASE

# 195 COLUMBIA TURNPIKE

FLORHAM PARK, NJ

2,534 RSF



## LEASING INFORMATION

**DOUGLAS ROWE**

973.947.9202

[douglas.rowe@transwestern.com](mailto:douglas.rowe@transwestern.com)

**LESLIE MERIL**

973.947.9238

[leslie.meril@transwestern.com](mailto:leslie.meril@transwestern.com)

**RYAN PRINCE**

973.947.9207

[ryan.prince@transwestern.com](mailto:ryan.prince@transwestern.com)

**KERI DEKMAR**

973.947.9205

[keri.dekmar@transwestern.com](mailto:keri.dekmar@transwestern.com)

The information provided herein was obtained from sources believed reliable; however, Transwestern makes no guarantees, warranties or representations as to the completeness or accuracy thereof. The presentation of this property is submitted subject to errors, omissions, change of price or conditions, prior sale or lease, or withdrawal without notice. Copyright © 2020 Transwestern.