

# 1023 HIGH ST.

Mundelein, IL

AVAILABLE

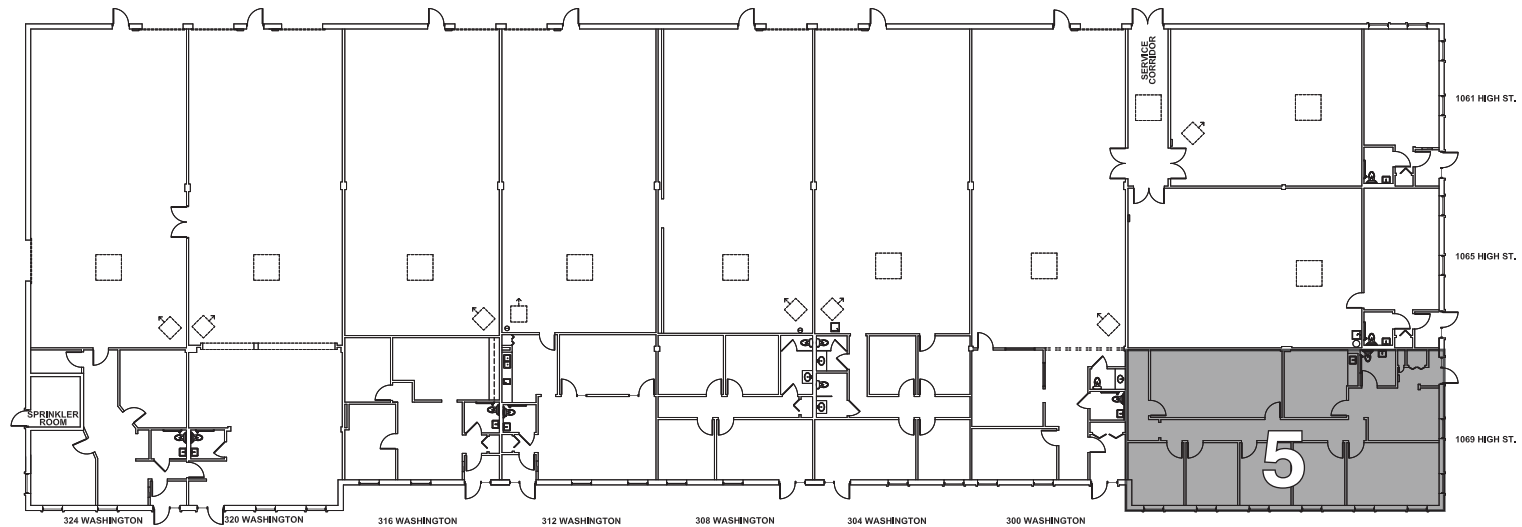
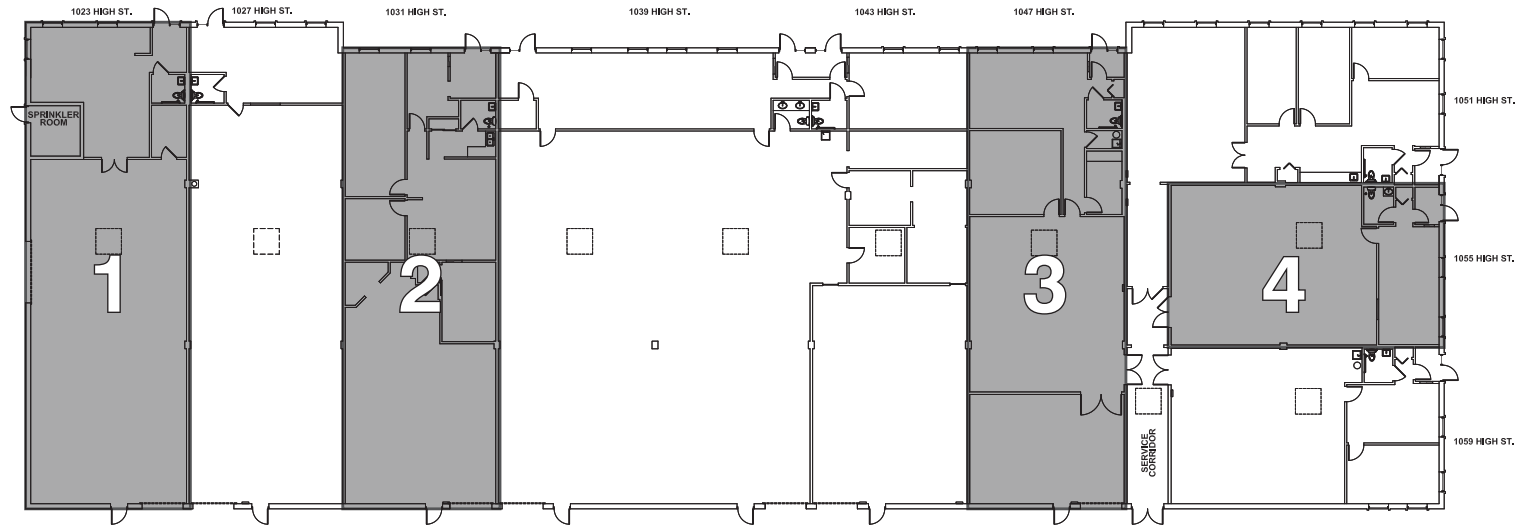


**John Sharpe**  
Principal  
jsharp@lee-associates.com  
773.355.3030

**Ryan Kehoe**  
Vice President  
rkehoe@lee-associates.com  
773.355.3034

9450 W. Bryn Mawr Avenue, Suite #550 | Rosemont, IL 60018 | p: 773-355-3000 | [www.lee-associates.com](http://www.lee-associates.com)

# SITE PLAN



EAST HIGH ST.

WASHINGTON BLVD.



# 1023 HIGH STREET

Mundelein, IL

**AVAILABLE**

## FEATURES

- Close to Many Restaurants and Businesses on Townline Road
- Newly Renovated, Fully Updated Suites Available
- Business Park Location, Just North of Allanson Road, West of Butterfield Road and East of Lake Street, Easy Access to I-94
- High-Image Well Maintained Brick Building
- Hands on Management
- Available for Immediate Occupancy

## BUILDING SPECIFICATIONS:

**Building Size:** 50,000 SF  
**Office Finish:** To Suit  
**Clear Height:** 14'  
**Sprinklered:** Yes  
**Auto Parking:** Ample  
**Drive-in Doors:** Private  
**Pricing:** Lease: \$7.50 Gross



| 1        | 2        | 3        | 4        | 5        |
|----------|----------|----------|----------|----------|
| 2,920 SF | 2,860 SF | 2,860 SF | 1,804 SF | 2,108 SF |

# 1023 HIGH STREET

Mundelein, IL

**AVAILABLE**

