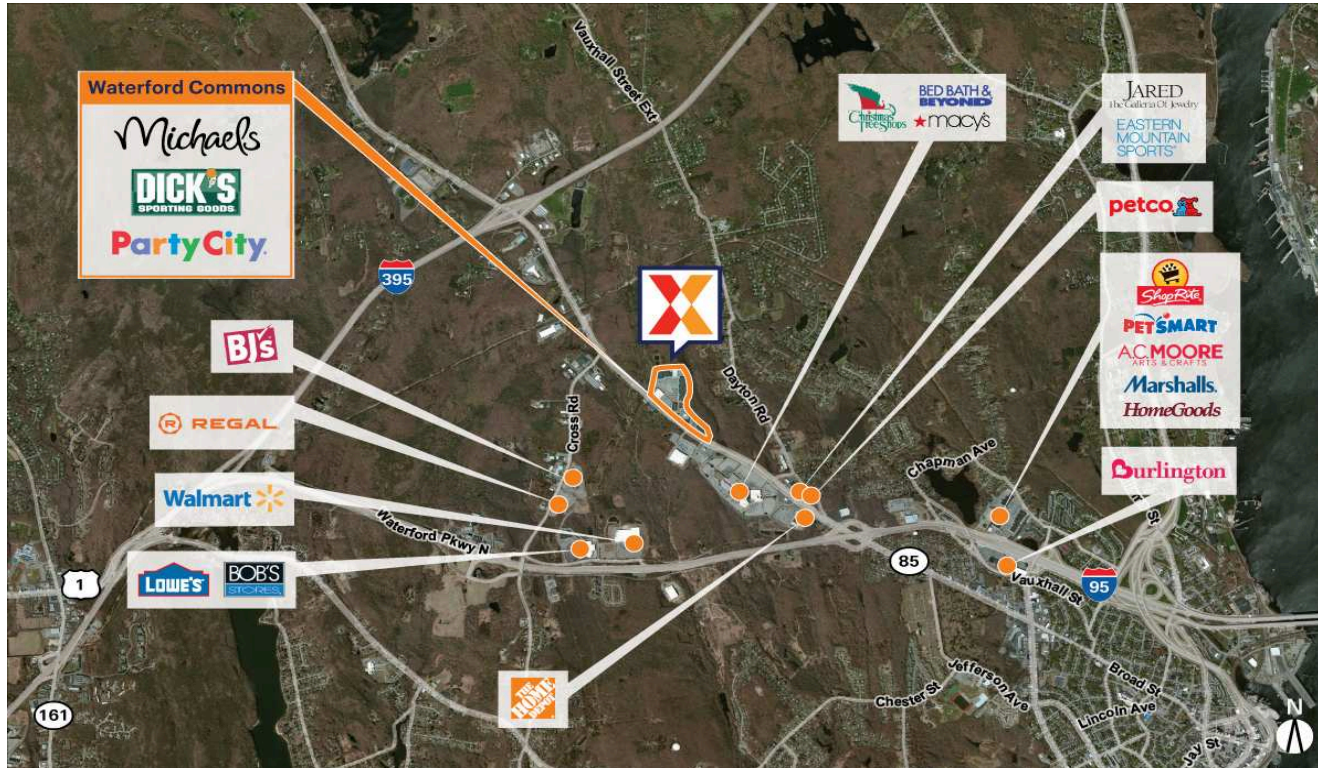


Waterford Commons

Norwich-New London, CT

41.3819, -72.1507

903-915 Hartford Turnpike | Waterford, CT 06385



Center Size: 236,730 SF



Demographics	5 Mile	10 Mile	25 Mile
	74,429	157,847	469,083
	28,262	60,696	183,698
	\$81,752	\$90,552	\$96,666

Power center with a strong lineup of national retailers including Dick's Sporting Goods, Party City, DSW, Best Buy, Five Below, Michaels & Books-A-Million

Across from the 800,000 SF Crystal Mall anchored by JCPenney, Macy's, Sears, Bed Bath & Beyond and Christmas Tree Shops

Retail location surrounded by an affluent population with an average household income of \$81,000+ within 5 miles

Easily accessible commercial space to I-95 and I-395

Close proximity to United States Coast Guard Academy and Connecticut College with a combined enrollment of 3,000+ students

Restaurant space available for lease

Waterford Commons

Norwich-New London, CT

41.3819, -72.1507

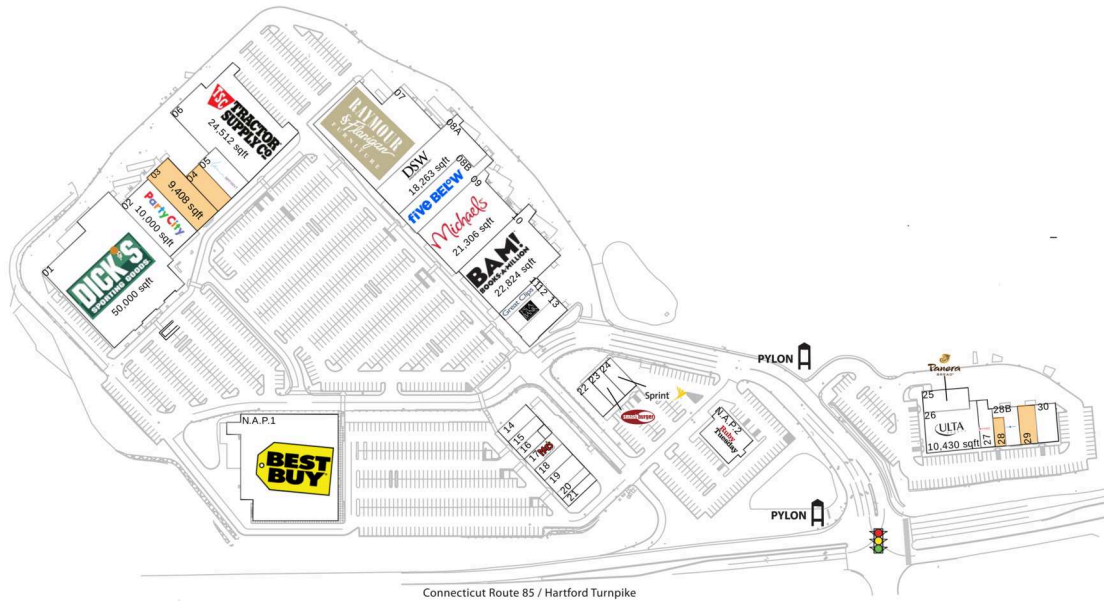
903-915 Hartford Turnpike | Waterford, CT 06385

Available Space

03	9,408 SF
04	4,000 SF
28	1,500 SF
29	2,403 SF

Current Retailers

N.A.P.1	Best Buy	0 SF
N.A.P.2	Ruby Tuesday	0 SF
01	Dick's Sporting Goods	50,000 SF
02	Party City	10,000 SF
05	Lane Bryant	5,000 SF
06	Tractor Supply Company	24,512 SF
07	Raymour & Flanigan	0 SF
08A	DSW	18,263 SF
08B	Five Below	9,393 SF
09	Michaels	21,306 SF
10	Books-A-Million	22,824 SF
11	Great Clips	2,200 SF
12	Jos. A. Bank	4,091 SF
13	Hannoush Jewelers	4,192 SF
14	Yankee Candle Co.	2,500 SF
15	Pearle Vision	2,000 SF
16	Miracle-Ear	1,500 SF
17	Moe's Southwest Grill	3,200 SF
18	Scotttrade	2,000 SF
19	Aspen Dental	2,635 SF
20	Jersey Mike's Subs	1,400 SF
21	Cold Stone Creamery	1,600 SF
22	Music And Arts Center	2,560 SF
23	Smashburger	2,560 SF
24	Sprint	2,557 SF
25	Panera Bread	4,488 SF
26	Ulta Beauty	10,430 SF
27	Pure Barre	1,410 SF
28B	Sleep Number	3,064 SF
30	Vein Clinics Of America	3,734 SF



Connecticut Route 85 / Hartford Turnpike

5152