

JAMAICA RETAIL SPACE AVAILABLE

89-05 165TH STREET

BETWEEN JAMAICA AVENUE & 89TH AVENUE



APPROXIMATE SIZE:

7,185 sq. ft. - Ground Fl
6,838 sq. ft. - Basement
1,991 sq. ft. - Mezzanine

DUEL FRONTAGE:

42' - 165' Street
34' - 164th Street

ASKING RENT:

Upon request

NEIGHBORS INCLUDE:

Hyperactive
Boston Market
Footlocker
AT&T
House of Hoops
V.I.M
Boost Mobile
Modell's Sporting Goods
Rainbow
Golden Krust

COMMENTS:

- Possession to be arranged
- Part of the 165th Street Mall
- Next to the Jamaica Colosseum
- Across from Jamaica Bus Terminal
- Natural divisions considered
- Dense residential population
- Heavy foot traffic
- Duel frontage on both 165th & 164th Streets

MASS TRANSPORTATION:

169th Street (F)
2,497,336 annual riders

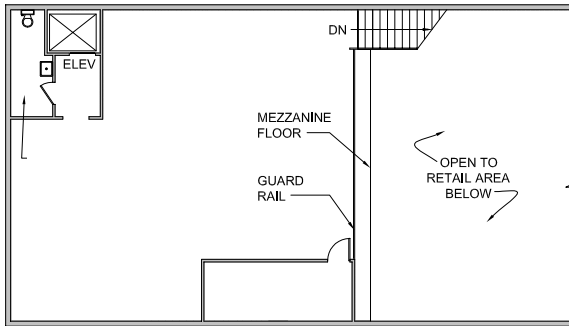


JAMAICA RETAIL SPACE AVAILABLE

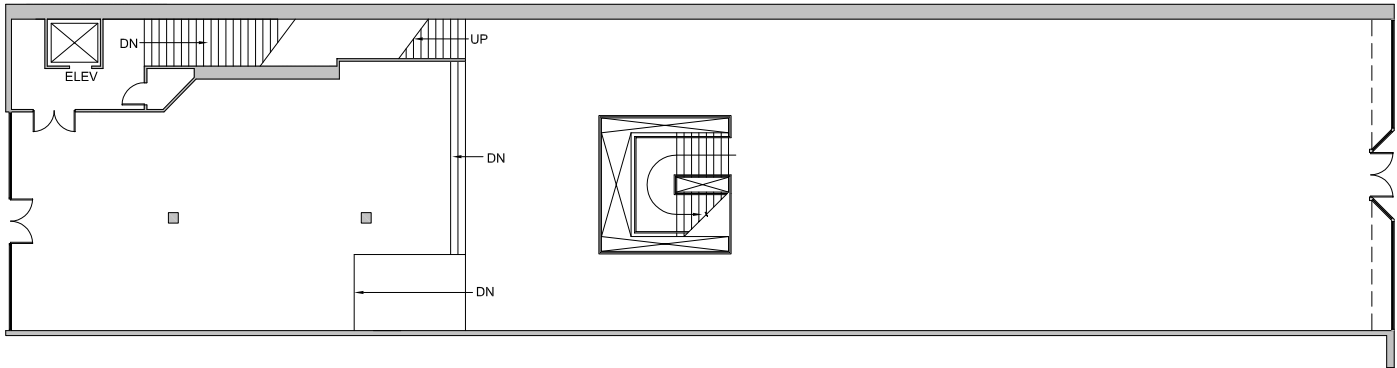
89-05 165TH STREET

BETWEEN JAMAICA AVENUE & 89TH AVENUE

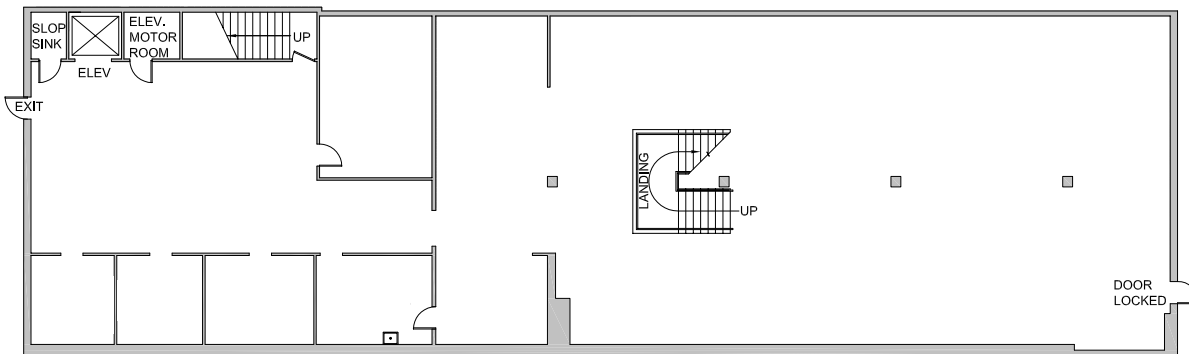
MEZZANINE



GROUND FL



BASEMENT





CONTACT EXCLUSIVE AGENTS

Cory G Zelnic
cory@zelnicco.com

Sean Philipps
sean@zelnicco.com

Michael Peguero
michael@zelnicco.com

Zelnic & Company LLC
ph: (212) 223-2200