



The pruneyard Campbell

Three Class "A" Office Buildings | Total ±365,229 SF

[WEBSITE](#)

[VIRTUAL SLIDESHOW](#)

[AVAILABILITY UPDATE](#)



Bob Simpson
408.615.3421
LIC#: 01240540

Rob Souza
408.615.3448
LIC#: 01916129

Todd Beatty
408.615.3418
LIC#: 00976940

ELLIS PARTNERS

PROJECT HIGHLIGHTS

- Three Class “A” office buildings totaling 365,229 SF
- Massive retail renovation completed in 2018
- Tremendous identity with unsurpassed panoramic views
- Expansive asset with multiple options for future growth
- New high-speed elevators and electronic directories
- Building card-key access and on-site security
- Common conference rooms and fitness center with showers
- On-site hotel, restaurants, retail, and entertainment
- Exclusive Pruneyard discount card for office tenants

The
pruneyard
Campbell

ORCHARD CITY KITCHEN

1901 S. BASCOM (TOWER 1)

Suite 1180		807± sf
Suite 1100		867± sf
Suite 1150	LEASED	951± sf
Suite 830	MARKET READY	2,501± sf
Suite 370	MARKET READY	4,321± sf
Suite 400	NEW	4,360± sf
Suite 600	LEASED	5,280± sf
Suite 500	LEASED	9,515± sf
Suite 200		9,520± sf

1919 S. BASCOM (PRUNEYARD PLACE)

Sixth Floor* DIVISIBLE 22,045± sf

* Denotes Full Floor

1999 S. BASCOM (TOWER II)

Suite 815		2,499± sf
Suite 590		3,335± sf
Suite 950		4,053± sf
Suite 650		5,597± sf
Suite 100	LEASE PENDING	8,636± sf

UPDATED JUNE 2019

PRUNEYARD PLACE



OCCUPIED/SUBLEASE OPTIONS

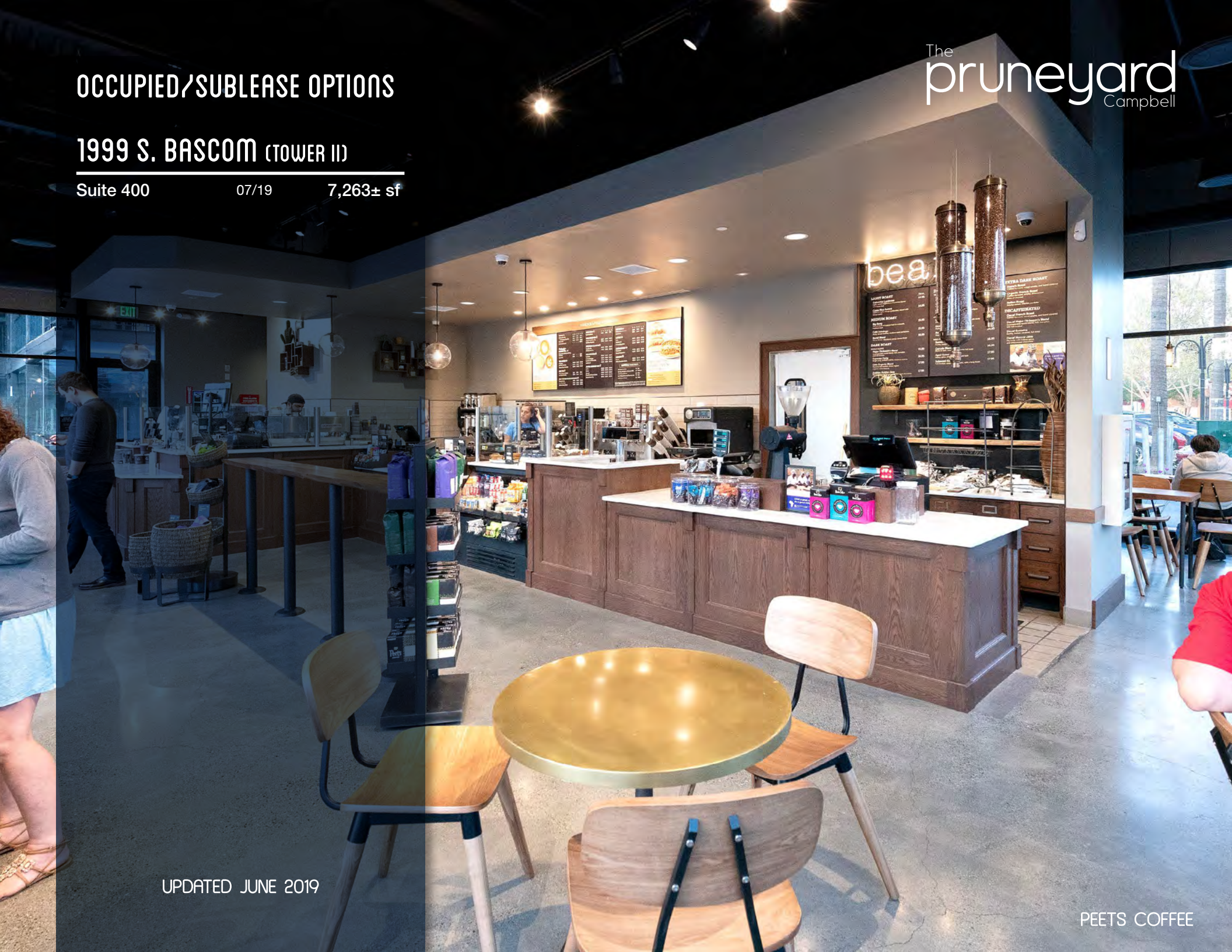
1999 S. BASCOM (TOWER II)

Suite 400

07/19

7,263± sf

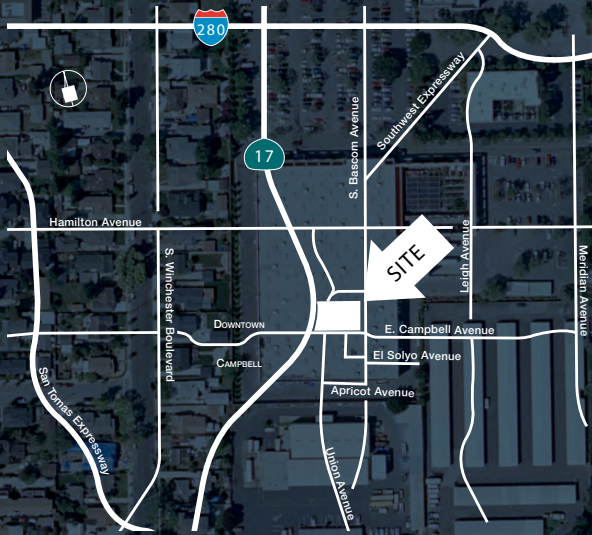
The
pruneyard
Campbell



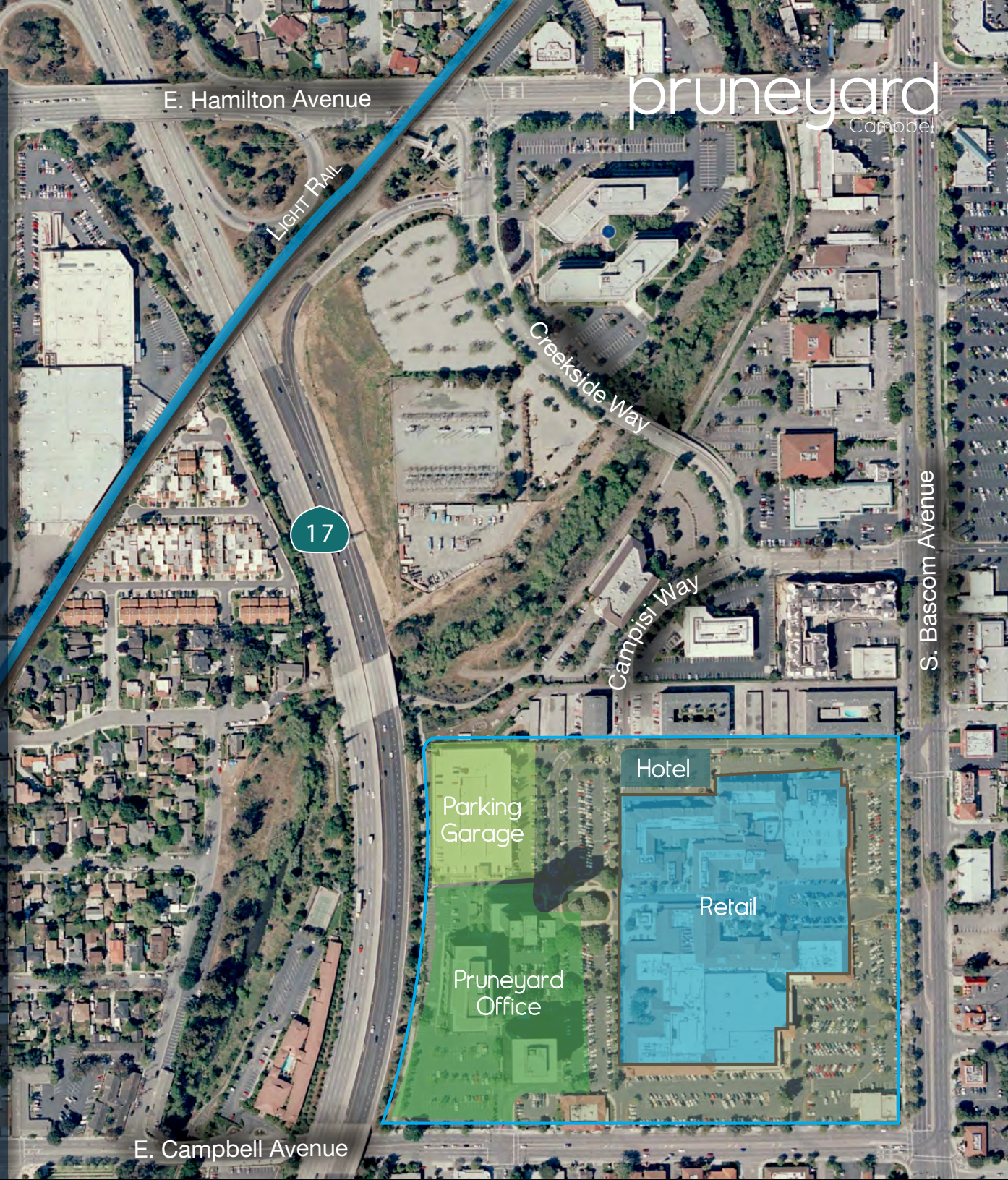
UPDATED JUNE 2019

PEETS COFFEE

LOCATION



- Excellent access to Highways 17 & 85 and Interstates 280 & 880
- Walking distance to Light Rail serving Diridon Station
- Optimal West Valley location with convenient access
- 3.0/1,000 parking ratio with dedicated 754 stall parking garage



pruneyard
Campbell

E. Hamilton Avenue

LIGHT RAIL

17

Creekside Way

Campisi Way

S. Bascom Avenue

E. Campbell Avenue

Parking Garage

Hotel

Retail

Pruneyard Office

AMENITIES MAP

RESTAURANTS

- 1 Pacific Catch
- 2 Luna
- 3 Kyoto Palace
- 4 Rock Bottom Brewery
- 5 Burger Lounge
- 6 Asian Box
- 7 Lulu's
- 8 ColdStone Creamery
- 9 Buca di Beppo
- 10 Café Artemis
- 11 Tin Pot Creamery
- 12 Mendocino Farms Sandwich Market
- 13 Patxi's Pizza
- 14 Orchard City Kitchen
- 15 Togo's
- 16 Be.Stéak.A

RETAIL

- 1 Marshalls
- 2 Classy Nails
- 3 Sports Fever
- 4 Blue Mercury
- 5 Unique Eyewear
- 6 V's Barber Shop
- 7 Blossom Nail Spa
- 8 Trudy's
- 9 Salon Rache
- 10 Trader Joe's
- 11 Sports Basement
- 12 Verizon

PROFESSIONAL SERVICES

- 1 Massage Envy
- 2 Bankers Network Corp.
- 3 United Security Bank
- 4 Chase
- 5 Fred Slater Optometry
- 6 Bank of America

COFFEE / ENTERTAINMENT

- 1 Cedar Room
- 2 Camera 7 Cinemas
- 3 Peet's Coffee

The pruneyard Campbell



The pruneyard Campbell

Three Class "A" Office Buildings | Total ±365,229 SF



Bob Simpson
408.615.3421
LIC#: 01240540

Rob Souza
408.615.3448
LIC#: 01916129

Todd Beatty
408.615.3418
LIC#: 00976940

ELLIS PARTNERS