

# HISTORIC CREATIVE OFFICE SPACE AVAILABLE FOR LEASE

894 W. WASHINGTON STREET  
SAN DIEGO, CA 92103



CONTACT EMMETT CAHILL • LIC. #02033604 • 619.243.8470 • ECAHILL@QFCRE.COM

**PROMINENT MISSION  
HILLS LOCATION - 2,802 SF**

**HARD CORNER OF  
W. WASHINGTON ST  
AND GOLDFINCH ST**

## LEASING INFORMATION

### Suite 894

- +/- 2,802 SF
- Southwest Corner Location With Great Exposure/Natural Light
- Three (3) Private Offices
- Large Conference Room
- Creative Open Space
- Reception Area
- IT/Copy Room
- Break Room
- Large Operable Windows
- Elevator Served
- On-site Parking Available

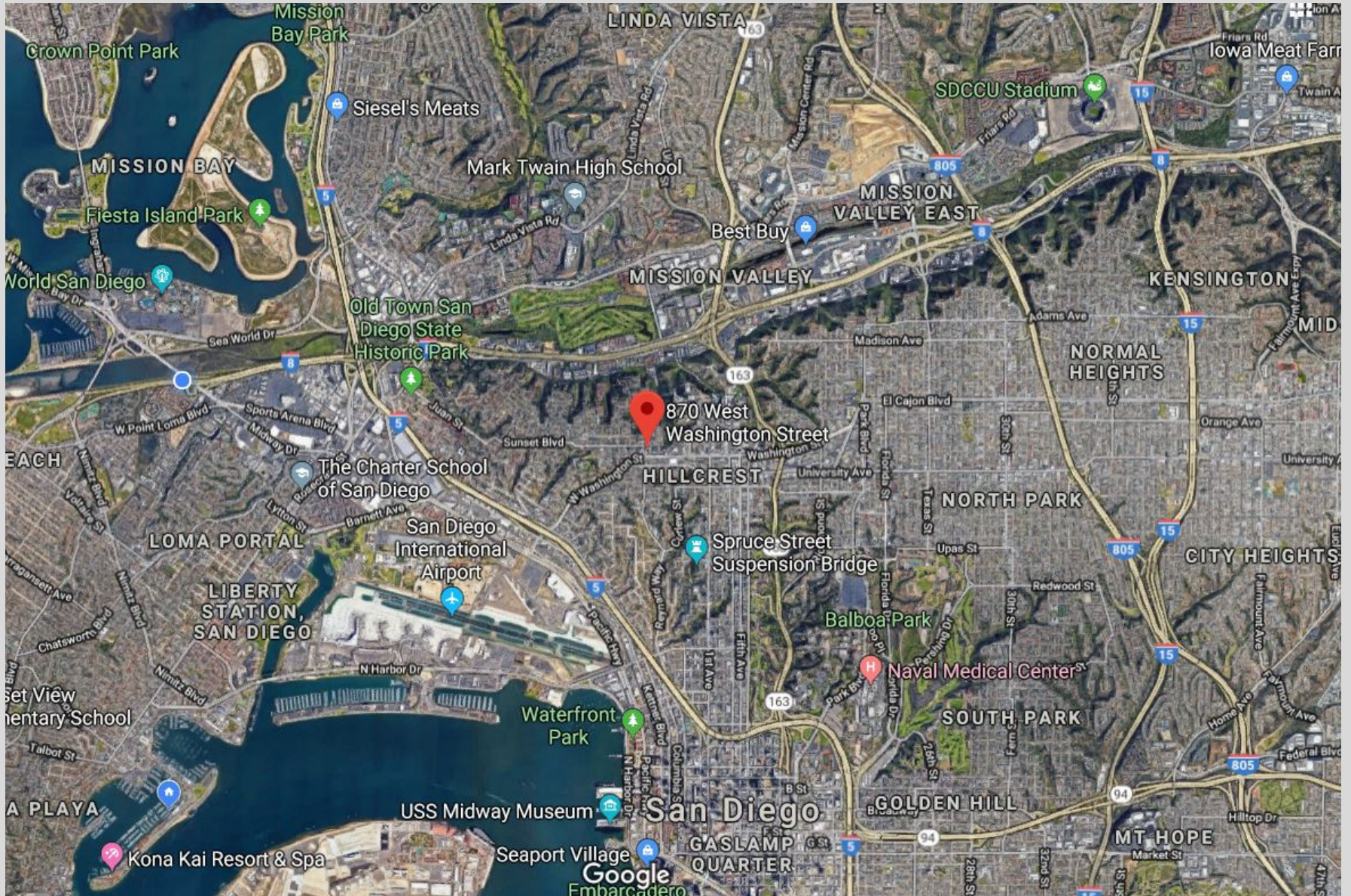
## LOCATION

- Prominent Mission Hills Location
- Walking Distance to Local Shops / Restaurants / Entertainment
- Co-Tenancy to Farmers Bottega, Pacific Sotheby's, Berkshire Hathaway, Fort Oak, and The Patio
- Easy Freeway Access (CA-163 & I-5)
- Reserved Underground Parking Available

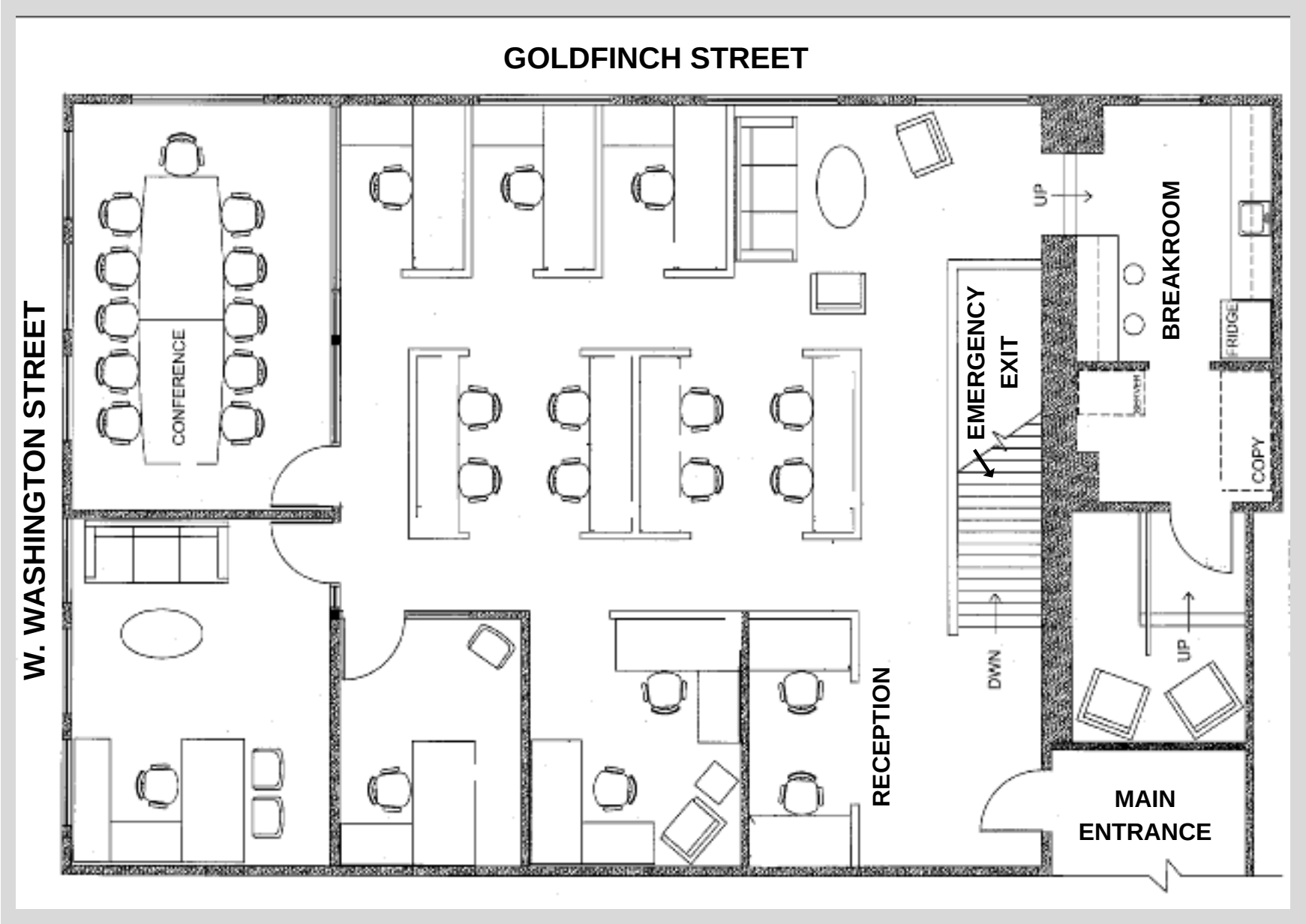
## RENTAL RATE

\$2.95 / SF + Electricity

# AERIAL VIEW



# FLOOR PLAN



# INTERIOR SPACE



CONTACT  
EMMETT CAHILL  
FOR DETAILS  
LIC. #02033604  
619.243.8470  
ECAHILL@QFCRE.COM



1495 PACIFIC HIGHWAY | SUITE 450 | SAN DIEGO CA | 92101  
619.243.8454 | WWW.QFCRE.COM

*The information contained herein has been obtained from sources considered to be reliable, but no guarantee of its accuracy is made by this company. In addition, no representation is made respecting zoning, condition of title, dimensions, or any matters of a legal or environmental nature. Such matters should be referred to legal counsel for determination. Terms and conditions are subject to change without prior notice. Subject to errors and omissions.*