



VISTA RIDGE



OVERVIEW

ADDRESS

912 S. Capital of Texas Hwy | Austin, TX 78746

SUBMARKET

Southwest Austin

PARKING

3.66 : 1,000 SF

AVAILABILITY

Suite 230 - 1,057 SF

Spec Suite 370 - 1,252 SF

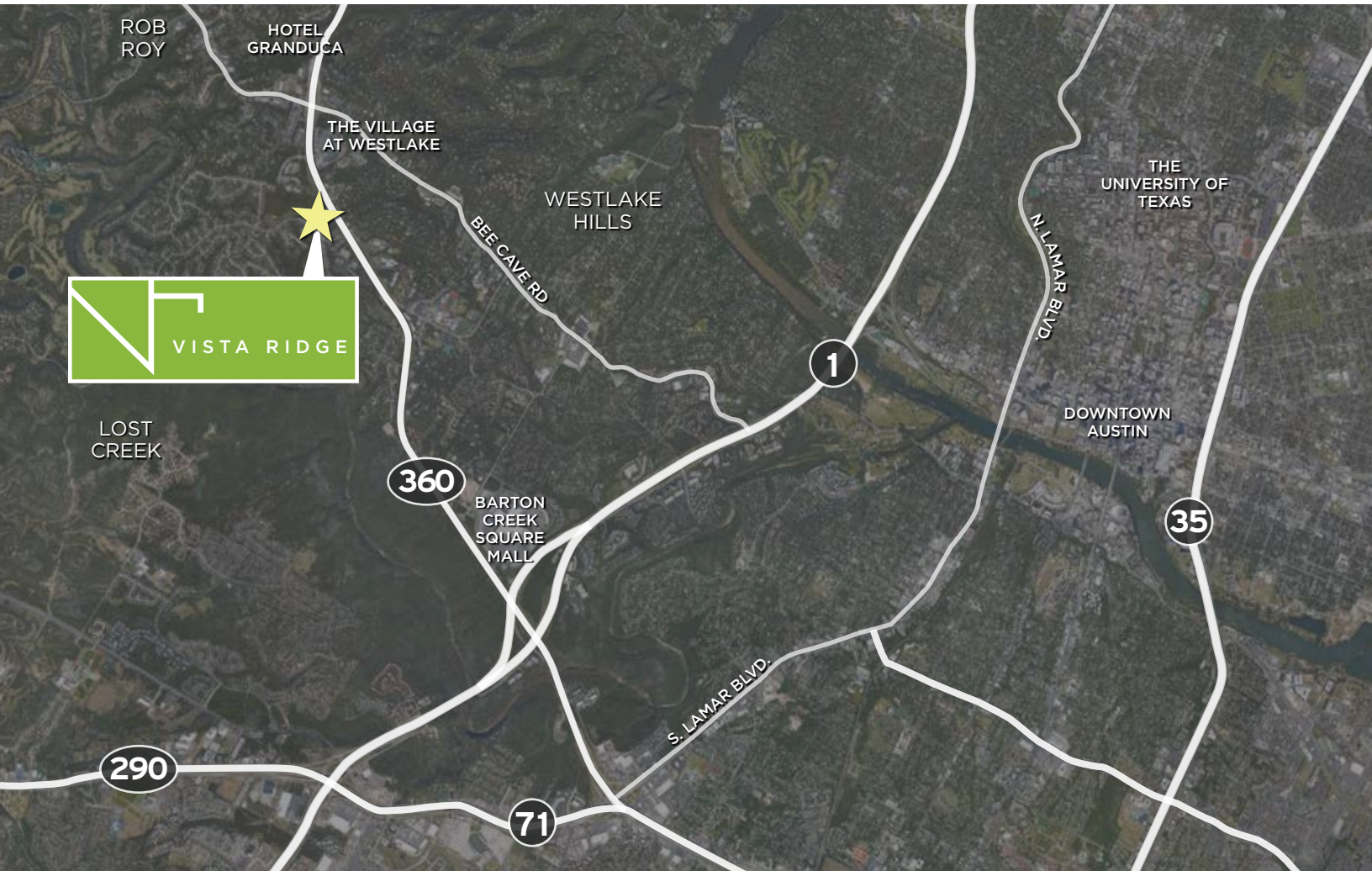
FEATURES

- » Newly remodeled lobby and shaded outdoor lounge area
- » Energy Star rated
- » Excellent views of Downtown and the Hill Country
- » Great visibility on Highway 360
- » Close proximity to Lost Creek, Westlake Hills and surrounding neighborhoods
- » Easy access to Mopac and Highway 360



VISTA RIDGE

912 S. CAPITAL OF TEXAS HWY | 78746



DRIVE TIMES



VILLAGE AT WESTLAKE



BARTON CREEK MALL



HOTEL GRANDUCA



DOWNTOWN AUSTIN



ABIA



ARBORETUM



DOMAIN

VISIBILITY, VIEWS & UNMATCHED LOCATION.

Located in close proximity of widely-held Austin restaurants, shops, neighborhoods and parks, Vista Ridge epitomizes an unbeatable Austin office setting. The notable views of Downtown Austin and the Texas Hill Country are just the start to this outstanding Southwest office location.



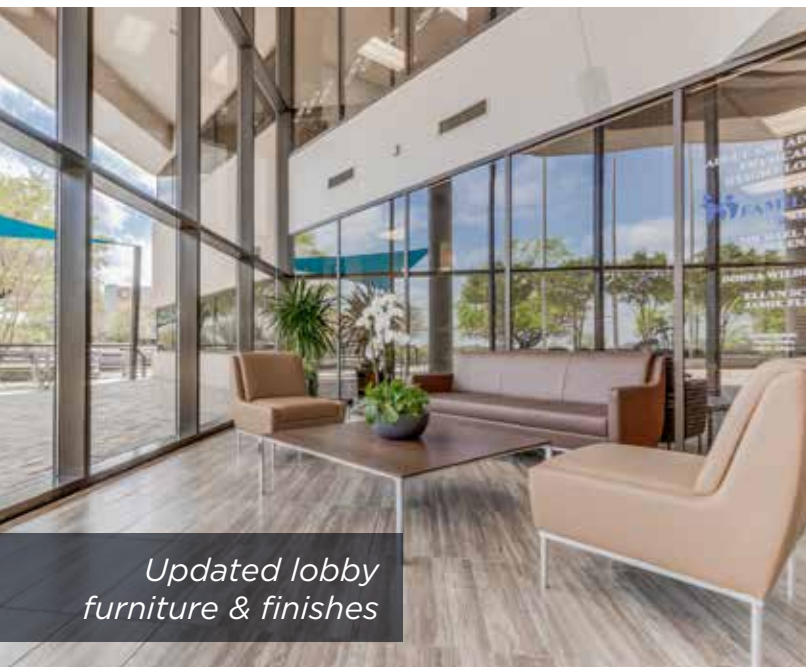


VISTA RIDGE

AMENITY UPGRADES



New tenant directory & updated lobby entrance



Updated lobby furniture & finishes





VISTA RIDGE

AMENITY UPGRADES



*Outdoor benches
& patio furniture*



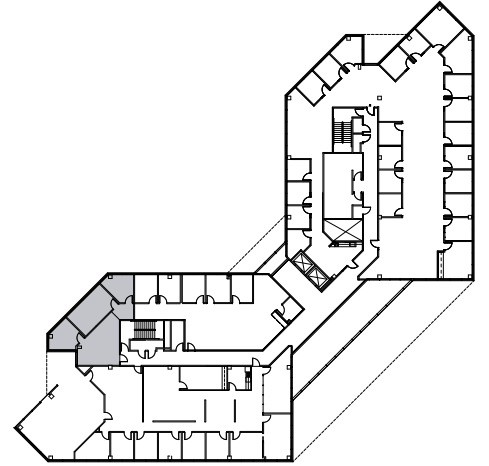
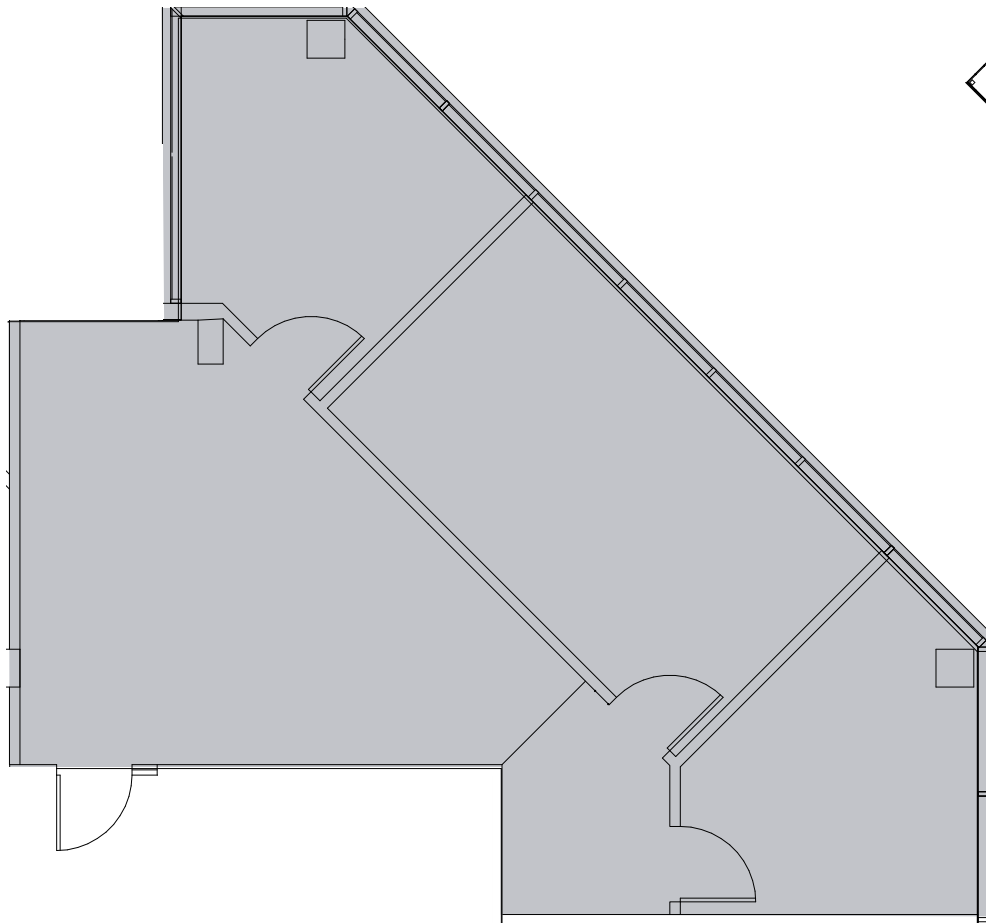


VISTA RIDGE

AVAILABILITY

2ND FLOOR

Suite 230 - 1,057 SF



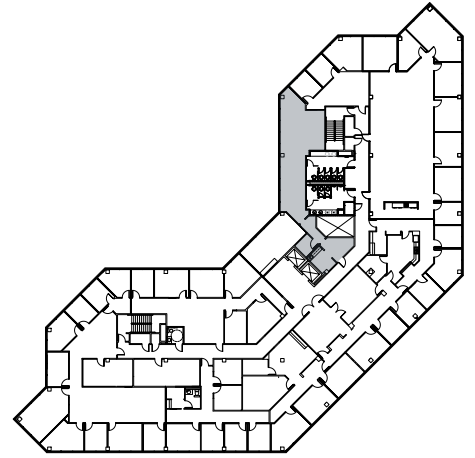
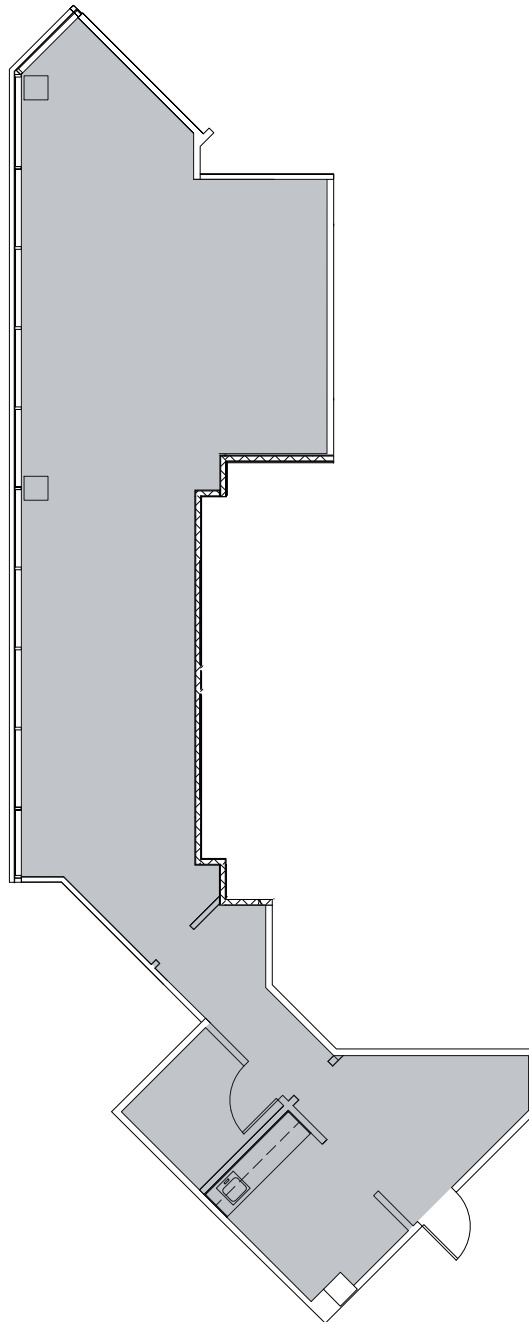


VISTA RIDGE

AVAILABILITY

3RD FLOOR
SPEC SUITE

Suite 370 - 1,252 SF



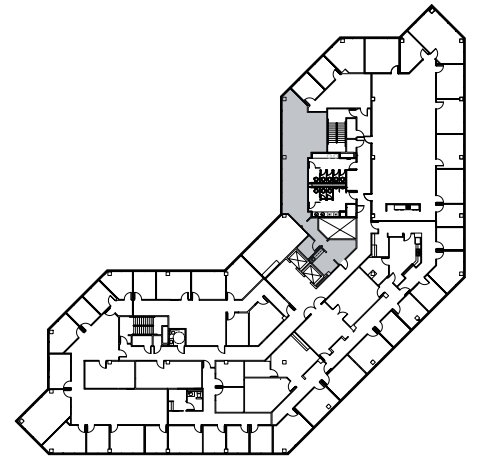
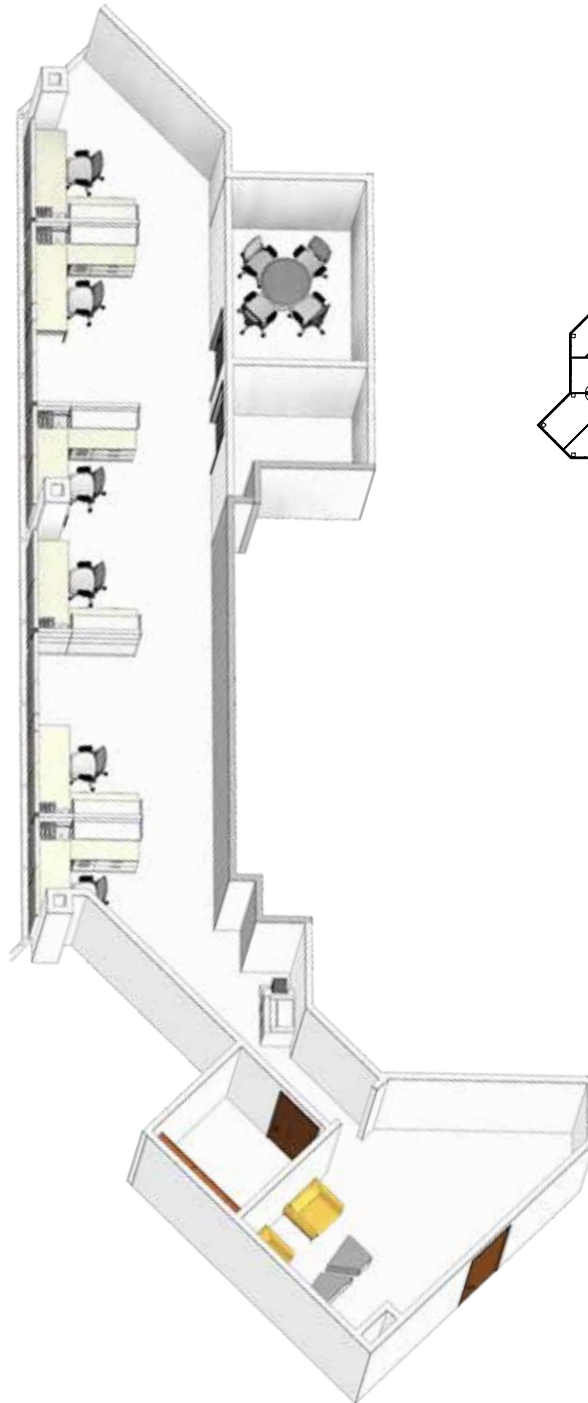


VISTA RIDGE

AVAILABILITY

SPEC SUITE
ISOMETRIC VIEW

Suite 370 - 1,252 SF





VISTA RIDGE