

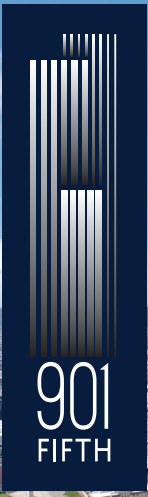
901 FIFTH

41 Stories. You could be one.



 VANBARTON
GROUP

9015thAvenue.com



Views of Downtown Seattle and Elliott Bay

BUILDING FEATURES

- + LEED Platinum building
- + State-of-the-art fitness center
- + Secure bike storage and building showers
- + Valet parking service
- + Remodeled 4th & 5th Avenue lobbies with concierge service
- + Renovated 65 person conference center in the 5th Avenue lobby plus new executive boardrooms on floor 27
- + Ingress and egress off both Marion St. and Madison St. to the building parking garage



Renovated Lobby



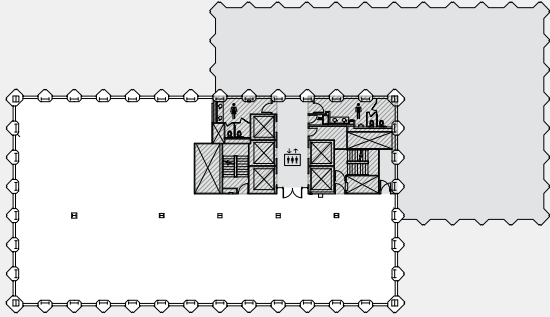
Building Conference Room



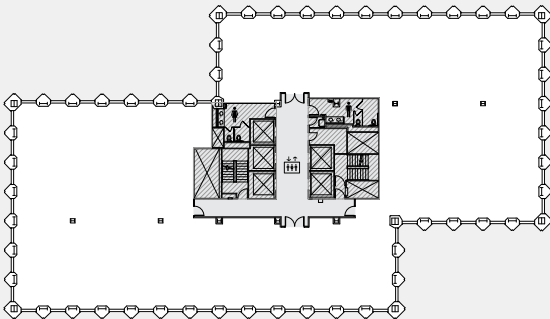
Building Fitness Center

PLANS

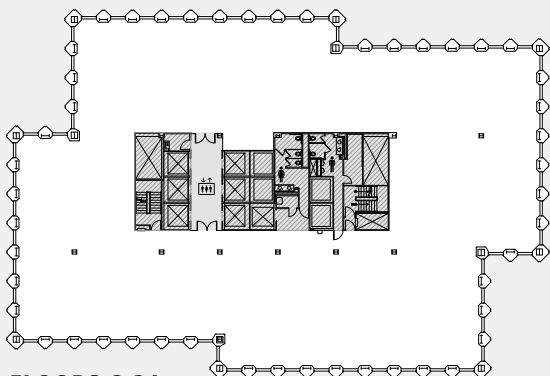
901 Fifth delivers on the promise of state-of-the-art infrastructure with 540,000+ square feet of open and efficient floor plans.



FLOORS 38-41
8,339 SF



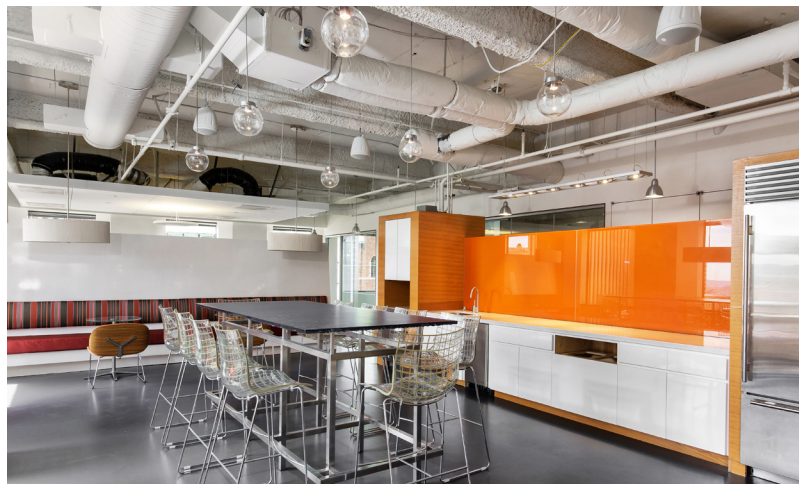
FLOORS 27-37
13,786 SF



FLOORS 6-24
17,428 SF



TENANT SPACES





North facing views

PREMIER LOCATION

- + One block from I-5 with easy access to both northbound and southbound lanes
- + Close proximity to ferries, light rail and mass transit
- + Surrounded by a wide variety of Seattle's finest restaurants and easy grab & go dining options



South facing views of Pioneer Square & SoDo

EXCLUSIVELY OFFERED BY:



LLOYD LOW
 +1 206 607 1796
 lloyd.low@am.jll.com

JOE GOWAN
 +1 206 607 1738
 joe.gowan@am.jll.com

