

FLOOR PLAN

1/4" = 1'-0"

KEYNOTE LEGEND

NOTE	DESCRIPTION
1	EXISTING 1 HR FIRE BARRIER - SEE DETAIL
2	LOCATE ELEC. WATER HEATER & HVAC AIR HANDLER ON PLATFORM ABOVE TOILET ROOMS
3	COUNTER UP 3/4" CAB. BELOW
4	COUNTER UP 3/4" CAB. ABOVE & BELOW
5	S.S. SINK
6	SOUND BOOTH - VERIFY WITH OWNER
7	CHEF TABLE & CHAIRS - VERIFY W/ OWNER
8	PENS - VERIFY W/ OWNER
9	4' x 4' FIXED WINDOW W/ TEMPERED ONE WAY GLAZING
10	EXISTING COLUMN
11	FLOOR DRAIN
12	DRINKING FOUNTAIN
13	DRAPER CHANGE STATION - VERIFY W/ OWNER
14	REAR PROJECTION SCREEN - VERIFY W/ OWNER
15	STAGE - VERIFY HEIGHT W/ OWNER

ARCHITECTURAL NOTES

- All work to comply with the 2009 International Building Code & 2009 NFPA 101 Life Safety Code.
- Locks on exterior doors in rooms of egress shall not require the use of a key, special device, special knowledge, or effort of operation from the egress side of the door.
- Door hardware shall not require tight grasping, tight pinching or twisting of the wrist to operate.
- Doorways in means of egress shall be 32" min. clear width.
- The floor shall be level on both sides of a door.
- Landings outside exterior doors shall be level with the floor.
- Landings shall not exceed 1/2" in height and be level with the floor.
- Clearances shall be maintained in accordance with all applicable codes.
- Provide signage of accessible entrances and directional signage of all accessible entrances.
- Handicap parking signage shall not be obscured by vehicle.
- Penetrations through rated construction shall be sealed with a material capable of preventing the passage of flames and hot gases when tested in accordance with ASTM E-814.
- Provide detailed insulator cut sheets of the fire penetration sealing system used to the manufacturer's instructions.
- Provide safety glazing in hazardous locations as defined by the 2009 International Building Code, Section 2406.
- Interior wall and ceilings shall have a flame spread of 0-75 per NFPA 101:56.3.3 and a smoke development rating of 0-450.
- Interior door frames shall be Class I per NFPA 253 in corridors and exits.
- Provide fire rated glass in accordance with 2010 ADA-ABA, Chapter 7.
- Signage, where provided at permanent rooms and spaces and other signs which provide direction to or information about functional spaces of the building, shall be in accordance with 2010 ADA-ABA, Chapter 7 (based character, letter size, and mounting).
- Frames shall comply with 2010 ADA-ABA, Chapter 6.
- Interior and exterior doors shall meet the requirements of International Building Code, Section 107.
- Concealed insulation shall have a flame spread of 0-25 and a smoke developed of 0-450.
- Exposed insulation shall have a flame spread of 0-25 and a smoke developed of 0-450.
- Draft stops of non-combustible material shall be provided in all attic areas above ceilings not to exceed 3000 sq.ft. or 50 ft. in any direction.
- Provide blocking at center of joists spanning more than 8'-0".
- Provide multiple studs at ends and ends of beams.
- Provide blocking at ends of joists.
- Provide blocking at ends of joists.
- Provide multiple Fire Extinguishers in accordance with NFPA 10.

CODE DATA :

N.F.P.A. 101 2009 EDITION	
OCCUPANCE:	ASSEMBLY - SEATED
MIN. NUMBER OF EXITS:	2 MINIMUM AS PER NFPA 101:7.4.1
MAX. ALLOWED DISTANCE TO EXIT (M):	200 MAX. AS PER NFPA 101:7.4.1
MAXIMUM CORRIDOR WIDTH:	20' MAX. AS PER NFPA 101:7.4.1
MINIMUM CORRIDOR WIDTH:	5' MIN. AS PER NFPA 101:7.4.1
INTERNATIONAL BUILDING CODE 2009 EDITION	
OCCUPANCE:	GROUP A-1 ASSEMBLY
CONSTRUCTION TYPE:	TYPE I
MIN. ALLOWED DISTANCE TO EXIT (M):	200 SQ/AREA FEET MAX
MAXIMUM CORRIDOR WIDTH:	20' MAX.
MINIMUM CORRIDOR WIDTH:	5' MIN.
TOTAL SQUARE FOOTAGE:	410 SQ. FT.



**PROPOSED BUILD-OUT FOR
METAIRIE CHURCH**

PONTCHARTRAIN PLAZA
3501 SEVERN AVENUE
SUITE 9
METAIRIE, LA.

**ARROW ENGINEERING
& CONSULTING**
DARRELL FUSSELL, P.E.

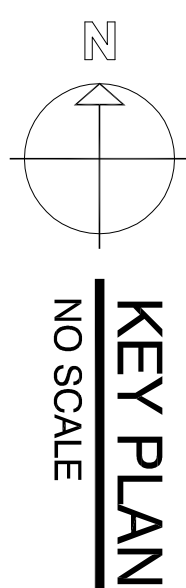
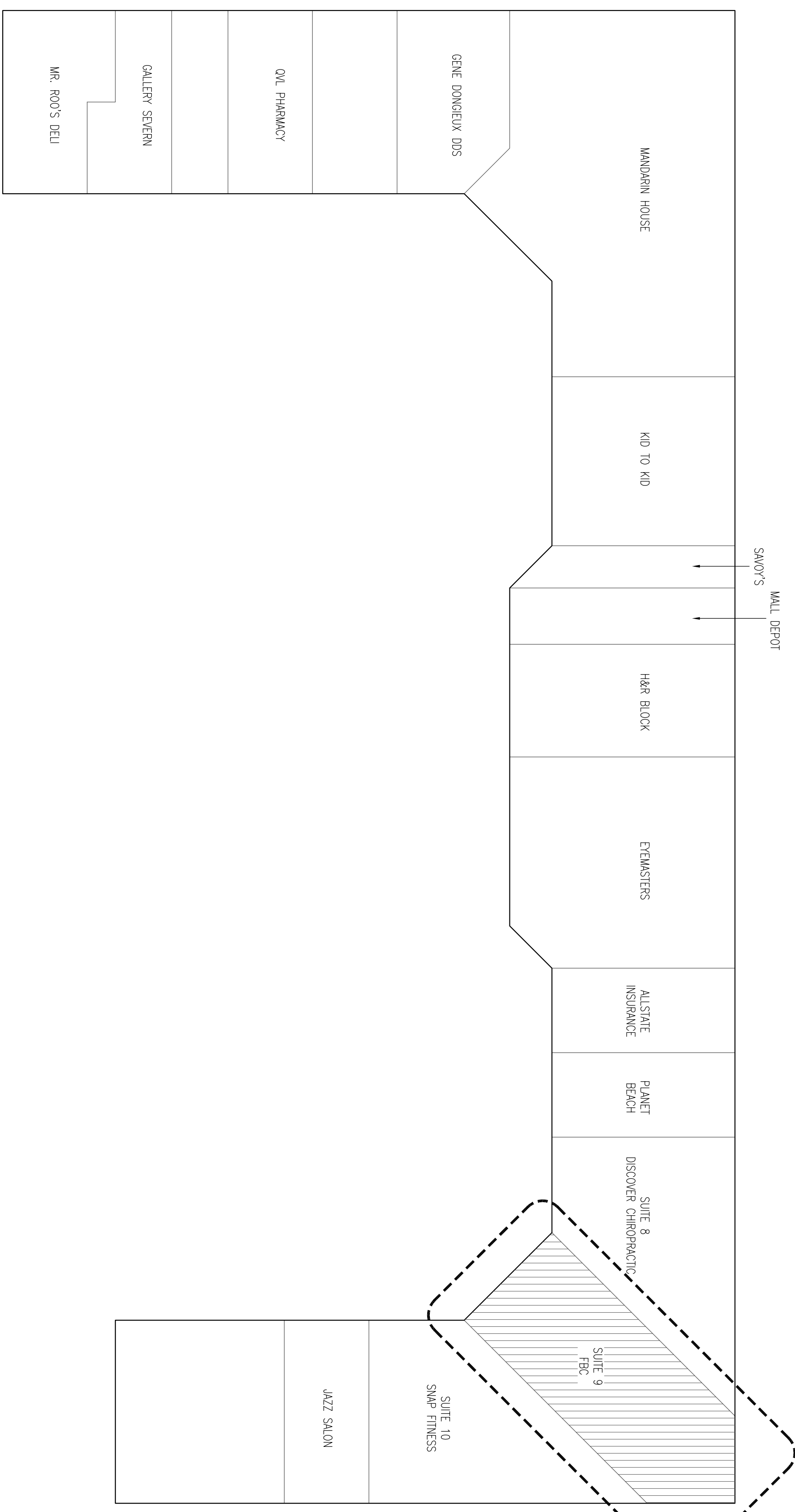
558 Choctaw Drive
Abita Springs, LA 70420 Phone: 985-237-3908

A DESIGN BUILD PROJECT BY:
KENT CONSTRUCTION, INC.
1875 HIGHWAY 59
MANDEVILLE, LOUISIANA



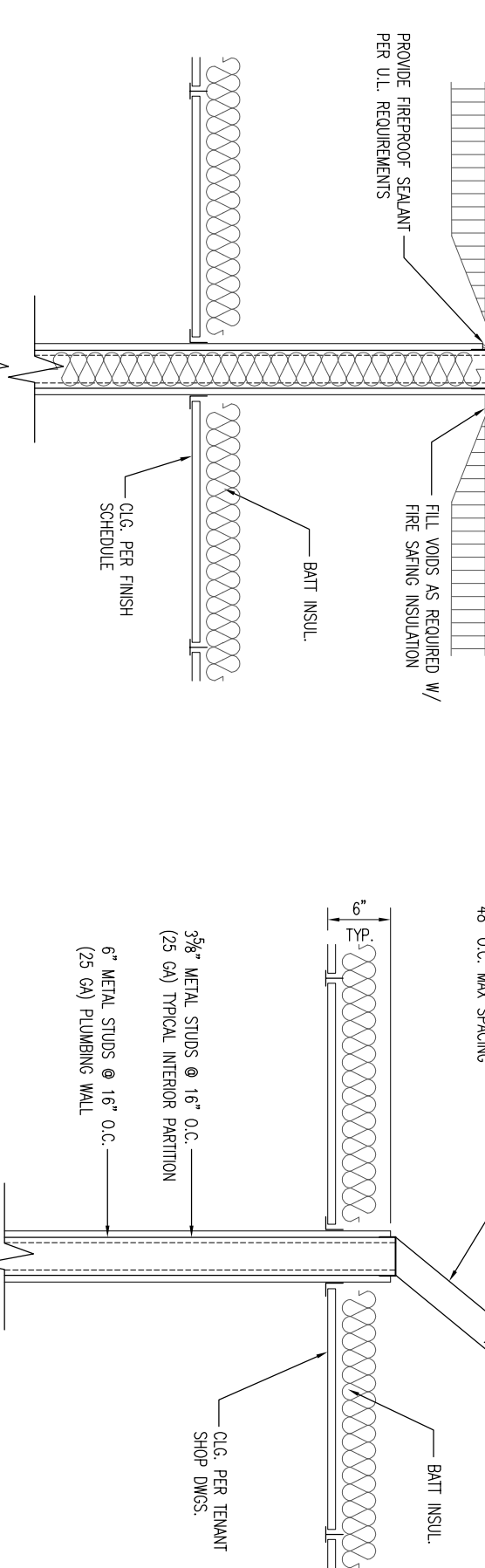
Dwn.	Date
TCM	07/18/12
Rev.	Rev.
Rev.	Rev.

**SHEET NO.
A01**

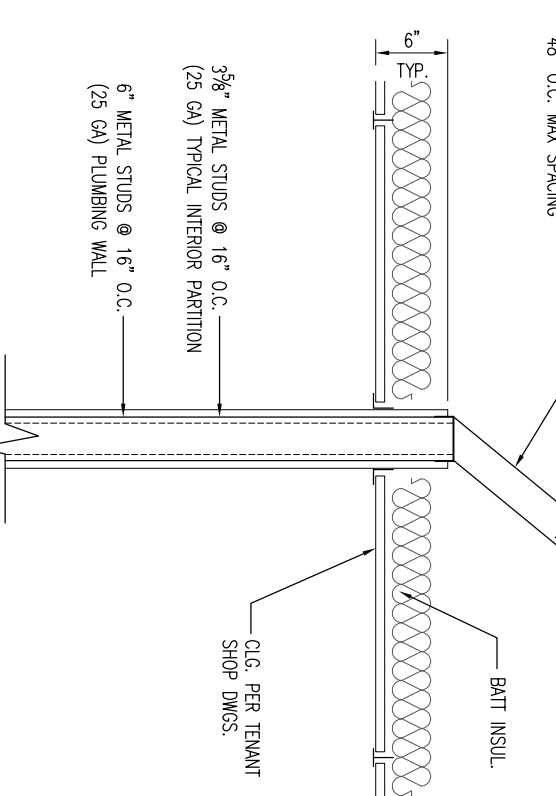


NUMBER	Fire rating	DESCRIPTION	SIZE	GLAZING	DOOR MATERIAL	DOOR FINISH	Frame material	Frame finish	Hardware	REMARKS
D001	-	EXISTING NARROW STILE	3070	CLEAR TEMPERED	ALUM.	ANODIZED	ALUM.	ANODIZED	1	
D002	-	EXISTING FLUSH PANEL	3070	-	H.W.	PAINTED	H.M.	PAINTED	2	
D003	-	FLUSH PANEL	3070	-	S.C. WOOD	PAINTED	H.M.	PAINTED	3	
D004	-	FLUSH PANEL	3070	-	S.C. WOOD	PAINTED	H.M.	PAINTED	4	
D005	-	FLUSH PANEL	3070	-	S.C. WOOD	PAINTED	H.M.	PAINTED	5	
D006	-	FLUSH PANEL	3070	-	S.C. WOOD	PAINTED	H.M.	PAINTED	6	

DOOR SCHEDULE



PARTITION TYPE - 1 Hr Rated
per U.L. Design No. U465
No Scale



PART. TYPE - Non Rated
No Scale

HARDWARE SCHEDULE

1	(EXISTING) 1 1/2 PR. BUTTS, OMD SURFACE CLOSER, STD. PUSH/PULL, WEATHER STRIPPING, ALUM. THRESHOLD, KETED OVL. (UNLOCKED WHEN BUILDING IS OCCUPIED)
2	(EXISTING) 1 1/2 PR. BUTTS, OMD SURFACE CLOSER, KETED LEVER LATCH (INTERIOR ALWAYS FREE), WEATHER STRIPPING, ALUM. THRESHOLD, DOOR FILTER & DRP @ HEAD
3	1/2 PR. BUTTS, PASSAGE LEVER LATCH, DOOR SILENCERS
4	1 1/2 PR. BUTTS, STD. PUSH/PULL, S.S. WICK PLATE, OMD SURFACE CLOSER, DOOR SILENCERS
5	EA. LEAF - 1 1/2 PR. BUTTS, DOOR SILENCERS, ACTIVE LEAF - KETED LEVER LATCH (STORAGE SIDE ALWAYS FREE), INACTIVE LEAF - SLIDE BOLTS
6	1/2 PR. BUTTS, KETED LEVER LATCH (OFFICE SIDE ALWAYS FREE), DOOR SILENCERS

FINISH SCHEDULE

ROOM NO.	MARK	WALL	FLOOR	CEILING	HT.
101		PTD. GYP. BD. PRE-FINISHED METAL PANEL	CARPET	PTD. GYP. BD.	
102		F.R.P. PANEL	CERAMIC TILE	PTD. GYP. BD.	
104		CHAIR RAIL	SEALD CONC.	PTD. GYP. BD.	
105		UN-FINISHED	WOOD	VINYL SOFFIT	
106		NONE	WOOD	2x2 ACOUSTICAL LAY-IN	
107		PAINT GRADE WOOD	WOOD	BEADED BOARD	
		RUBBER COVE	WOOD	EXPOSED ROOF STRUCTURE	
		CARPET	WOOD		
		RESILIENT VCT	WOOD		
		NONE	WOOD		
		PAINT GRADE WOOD	WOOD		
		STAIN GRADE WOOD	WOOD		



A DESIGN BUILD PROJECT BY:
KENT CONSTRUCTION, INC.
1875 HIGHWAY 59
MANDEVILLE, LOUISIANA

ARROW ENGINEERING & CONSULTING
DARRELL FUSSELL, P.E.
558 Choctaw Drive
Abita Springs, LA 70420
Phone: 985-237-3908

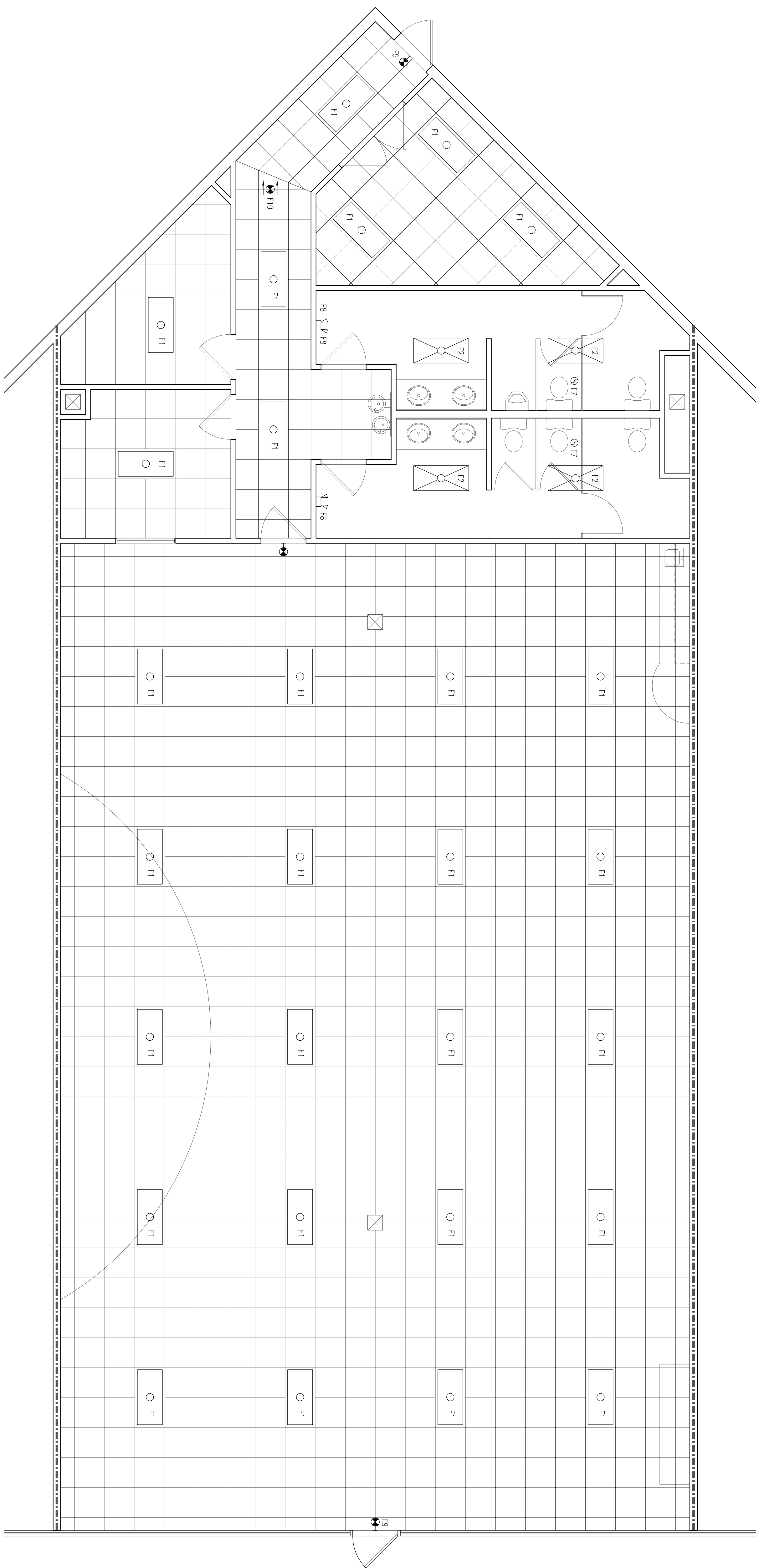
PROPOSED BUILD-OUT FOR METAIRIE CHURCH
PONTCHARTRAIN PLAZA
3501 SEVERN AVENUE
SUITE 9
METAIRIE, LA.



Dwn. Date
TCM 07/18/12
Rev. Rev.
Rev. Rev.

SHEET NO.
A02

LEGEND	
	F1 - 24x48 LAY-IN FLUORESCENT FIXTURE
	F2 - 12x48 SURFACE MTD. FLUORESCENT FIXTURE
	F3 - 24x48 SURFACE MTD. FLUORESCENT FIXTURE
	F4 - SURFACE MTD. INCANDESCENT C.L.G. FIXTURE
	F5 - WEATHER PROOF INCANDESCENT C.L.G. FIXTURE
	F6 - WEATHER PROOF INCANDESCENT WALL FIXTURE
	F7 - C.L.G. MTD. EXHAUST FAN W/O LIGHT (EXHAUST TO OUTSIDE)
	F8 - WALL MTD. EMERGENCY LIGHT
	F9 - WALL MTD. EXIT LIGHT W/ EMERGENCY LIGHTS
	F10 - C.L.G. MTD. EXIT LIGHT W/ EMERGENCY LIGHTS
	F11 - 175W LOW BAY METAL HALIDE LIGHT
	F12 - RECESSED INCANDESCENT C.L.G. FIXTURE
	F13 - C.L.G. MTD. EXHAUST FAN W/ LIGHT (EXHAUST TO OUTSIDE)
	F14 - INCANDESCENT WALL FIXTURE
	F15 - MOISTURE RESISTANT RECESSED CEILING FIXTURE
	F16 - HD MULTI-LAYER WALLPACK WITH TIMER CONTROL



- ELECTRICAL NOTES**
- 1 - Electrical work shall comply with NFPA 70 and National Electrical Code, 2005 Edition.
 - 2 - All fixtures, wiring panels and equipment shall be UL Listed.
 - 3 - All conductors shall be copper, min. size no. 12 except for future drops and control circuits of equipment.
 - 4 - Mechanical equipment shall be wired to and connected by Electrical Contractor, control wiring shall be by Race Contractor.
 - 5 - All wiring shall be installed in accordance with the NEC.
 - 6 - Wiring devices shall be specification grade as manufactured by Leaton or C.E. or approved equal.
 - 7 - Provide 3/4" conduit to Equipment, unless otherwise noted.
 - 8 - A sign shall be placed at each Service Entrance indicating the type and location of any on-site emergency source in accord with NFPA 707:300-300.
 - 9 - 250-53b, 250-71, and 250-81 bonding shall be in accord with NFPA 702:50-63, 250-23, and shall be bonded to each in accordance with NFPA 702:50-23b.
 - 10 - The grounding neutral conductor shall be run to each service disconnecting means enclosure and shall be bonded to other enclosures in accordance with NFPA 702:50-75.
 - 11 - A disconnect is required for a permanently connected appliance in accordance with NFPA 70:430-102b.
 - 12 - Electrical motors for compressors, pumps, exhaust fans, or ventilation fans shall have motor overload and short circuit protection in accordance with NFPA 70:430.
 - 13 - A disconnecting means shall be located in sight from the motor location in accordance with NFPA 70:430-102b.
 - 14 - A disconnecting means shall be located in sight from the motor location in accordance with NFPA 70:430-102b.
 - 15 - Disconnecting means shall be located in sight of and readily accessible from the equipment to be disconnected by the disconnecting means.
 - 16 - Service equipment, and each panelboard, circuit breaker and fused switch shall have adequate interrupting amp rating for available short circuit amps that must be interrupted in accordance with NFPA 70:110-9 & NFPA 70:210-8b.
 - 17 - Receptacles in restrooms of commercial, industrial and all other non-dwelling occupancies shall provide ground-fault circuit-interrupter protection for personnel in accordance with NFPA 70:210-8b.
 - 18 - Receptacles in commercial garage areas, or where electrical diagnostic equipment, or electric hand tools, or portable lighting devices, shall provide ground-fault circuit-interrupter protection for personnel in accordance with NFPA 70:511-10.
 - 19 - Contractor to coordinate with Mechanical Contractor to verify all exhaust fans are suitable for operation at 277 V.
 - 20 - and prior to installing any leaders or disconnects.
 - 21 - Electrical Contractor shall coord with Mechanical Contractor to verify Exhaust Fans suitable for operation at 277 volts.

REFLECTED CEILING PLAN

1/4" = 1'-0"



A DESIGN BUILD PROJECT BY:
KENT CONSTRUCTION, INC.
 1875 HIGHWAY 59
 MANDEVILLE, LOUISIANA

ARROW ENGINEERING & CONSULTING
 DARRELL FUSSELL, P.E.

558 Choctaw Drive
 Abita Springs, LA 70420 Phone: 985-237-3908

PROPOSED BUILD-OUT FOR METAIRIE CHURCH

PONTCHARTRAIN PLAZA
 3501 SEVERN AVENUE
 SUITE 9
 METAIRIE, LA.

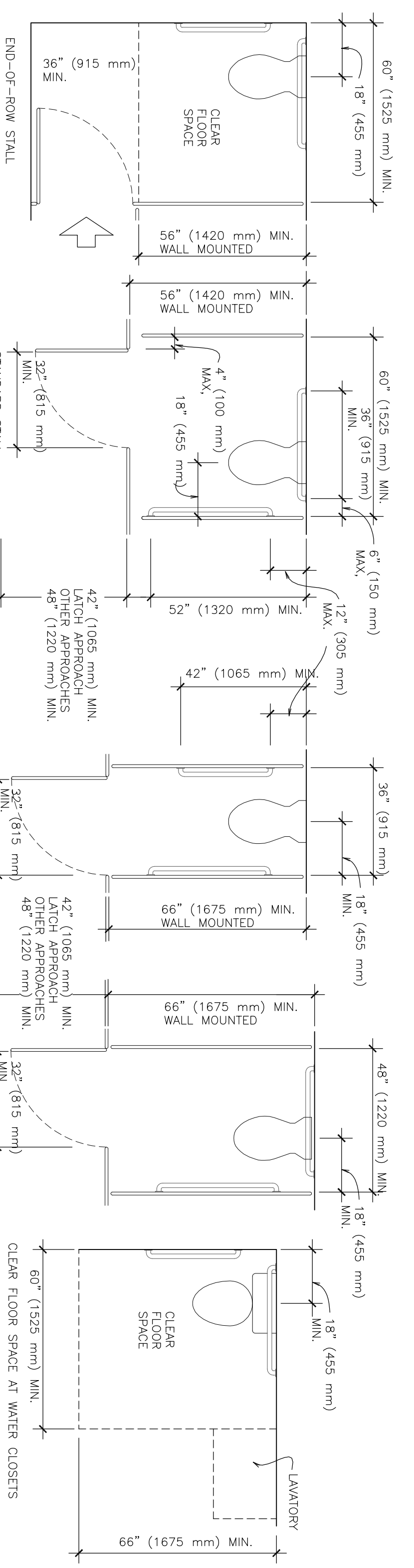


Dwn. Date
 TCM 07/18/12

Rev. Rev.

Rev. Rev.

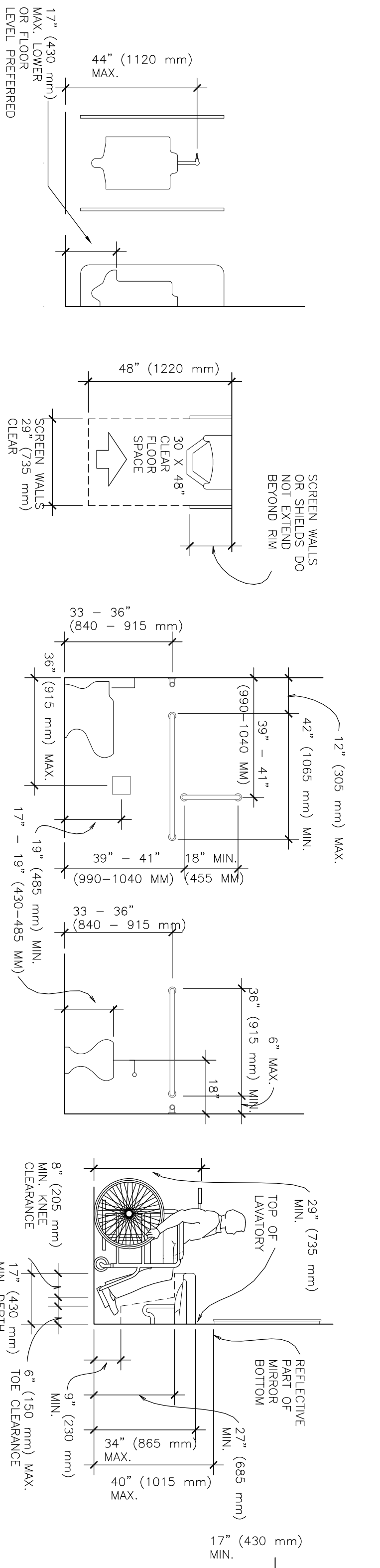
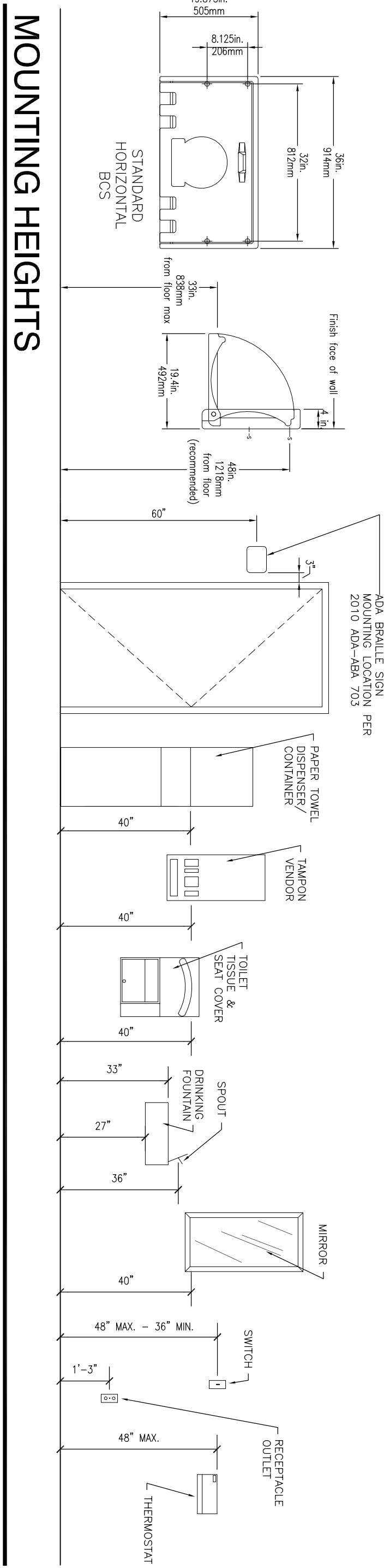
SHEET NO.
A03



HANDICAPPED TOILET STALL DETAILS

HANDICAPPED TOILET ROOM

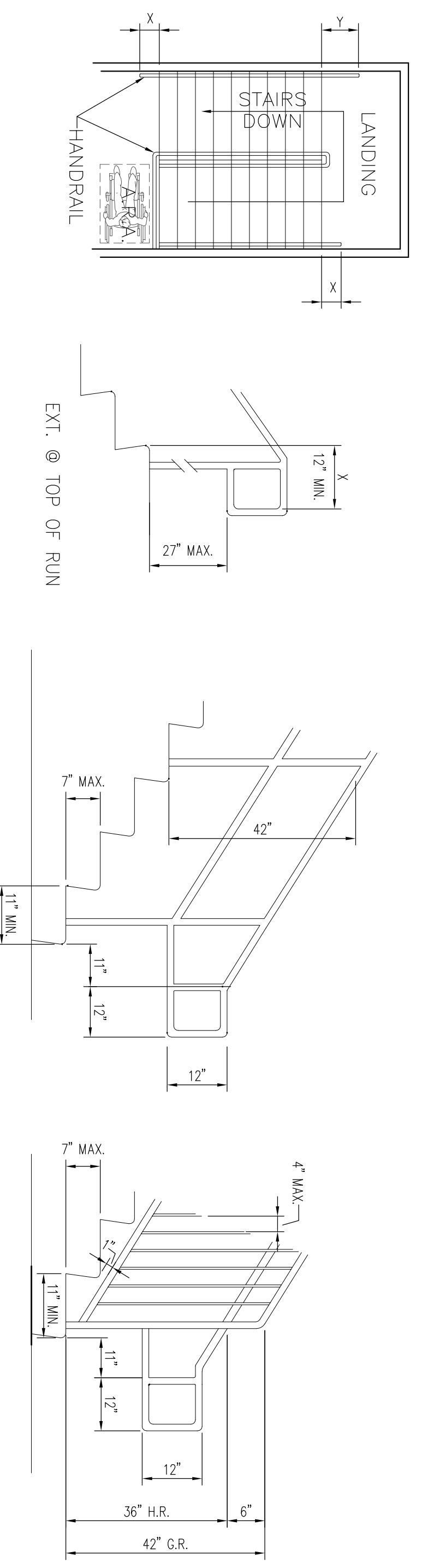
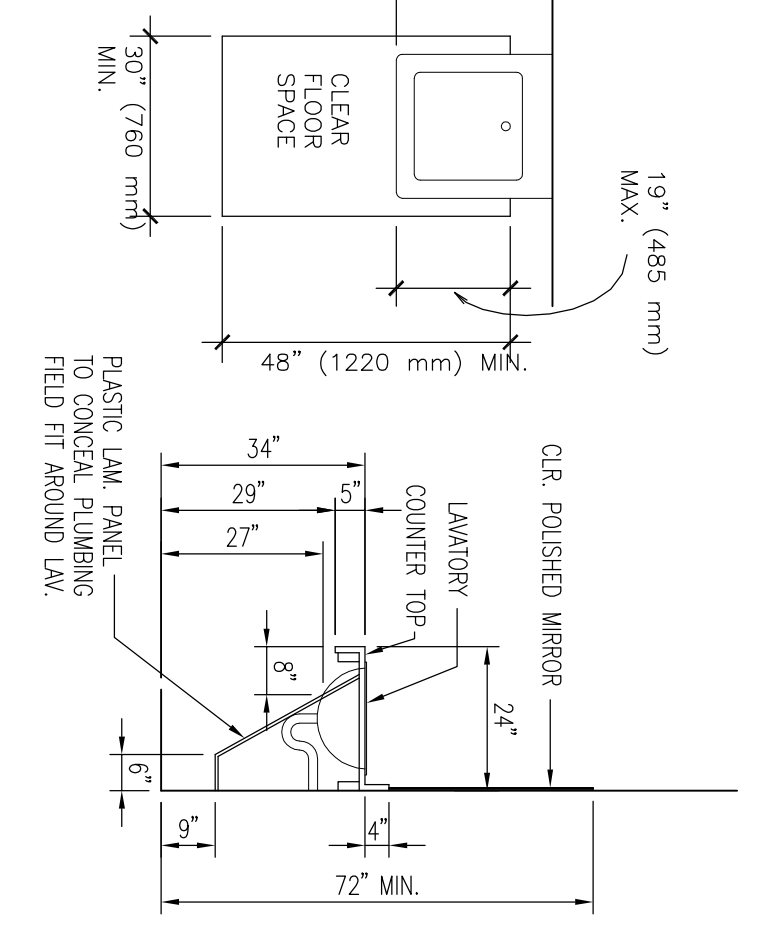
MOUNTING HEIGHTS



HANDICAPPED URINAL DETAILS

HANDICAPPED TOILET DETAILS

HANDICAPPED LAVATORY DETAILS

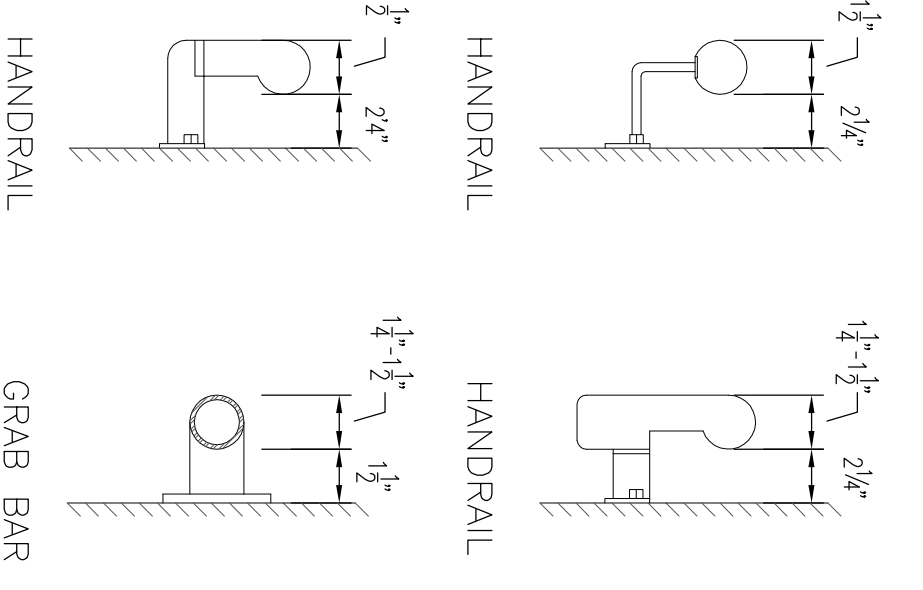


STAIR & HANDRAIL DETAILS

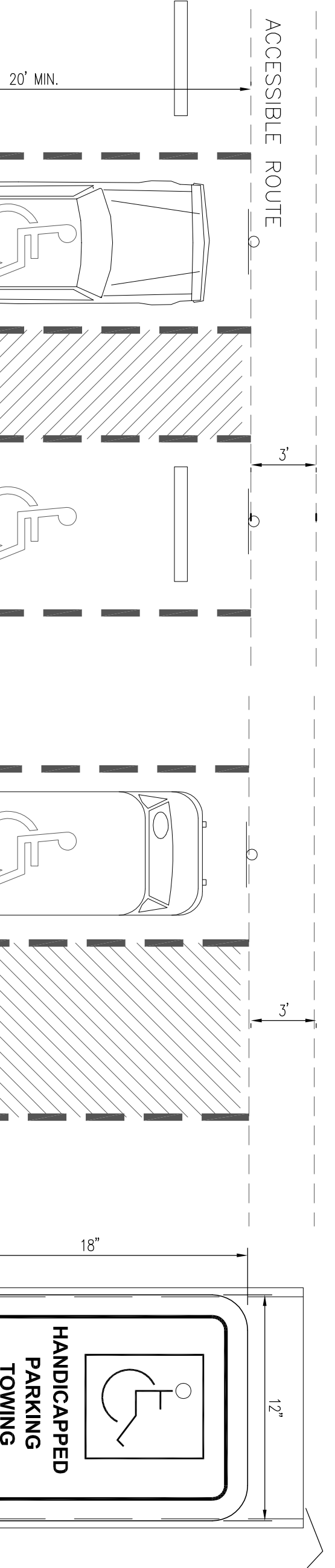
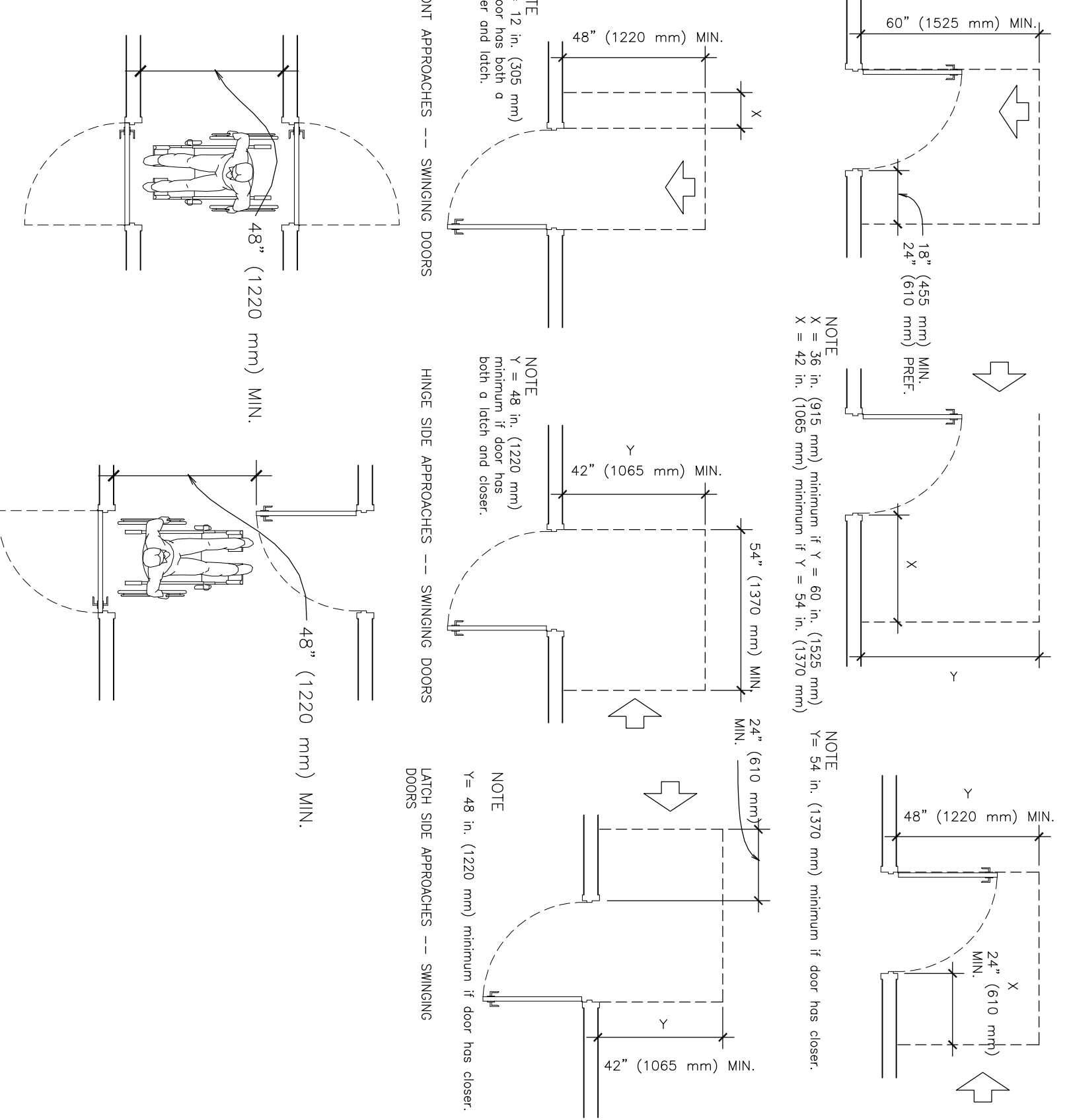
INDUSTRIAL STAIR (NOT PUBLIC ACCESSIBLE)

COMMERCIAL STAIR (PUBLIC ACCESSIBLE)

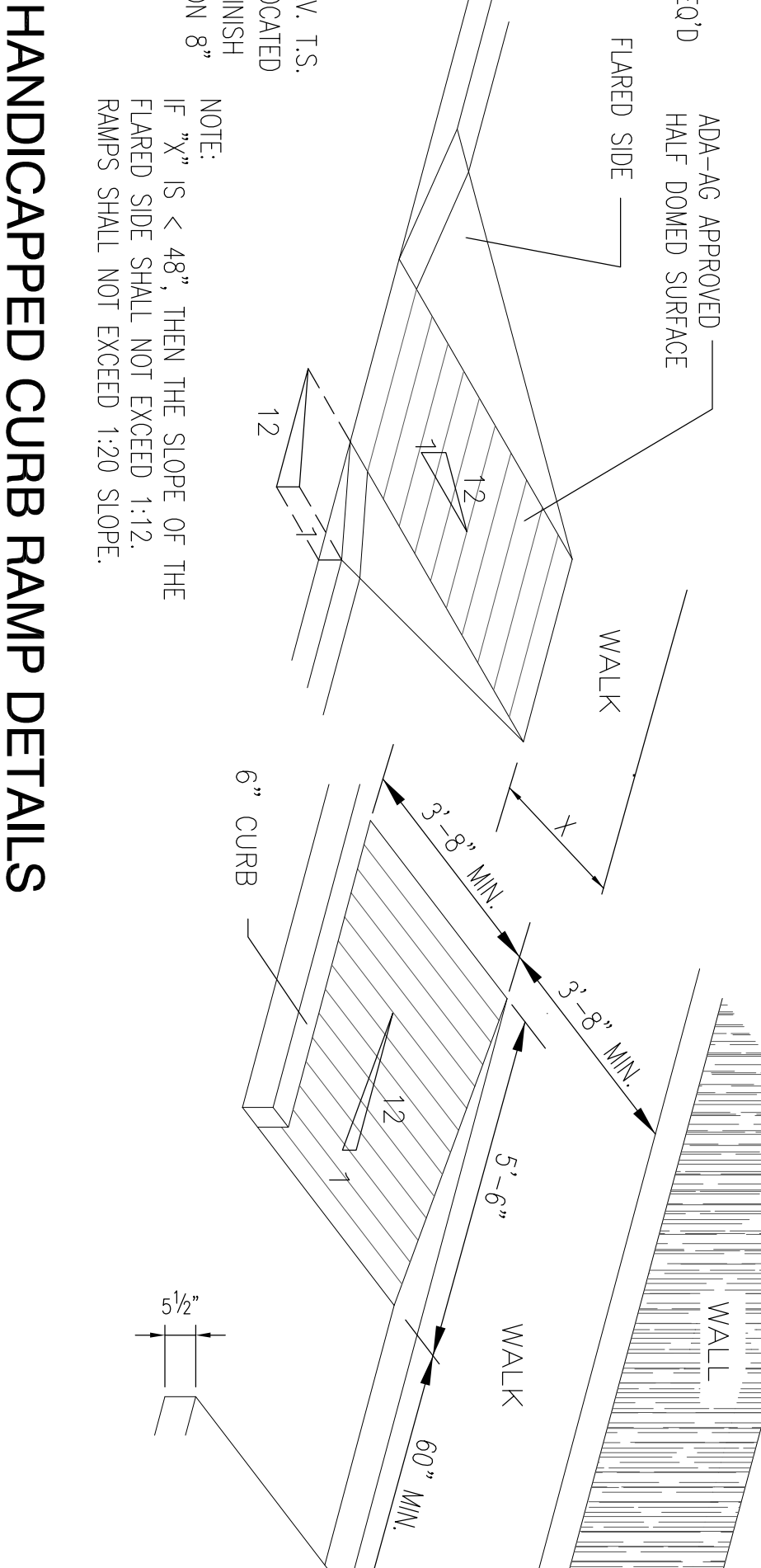
SIZE AND SPACING OF HANDRAILS AND GRAB BARS



MANEUVERING CLEARANCES AT DOORS



HANDICAPPED PARKING DETAILS



HANDICAPPED CURB RAMP DETAILS

NOTE: X IS THE 12 IN. MIN. HANDRAIL EXTENSION REQUIRED AT EACH TOP RISER.

Y IS THE MIN. HANDRAIL EXTENSION OF 12 IN. PLUS THE WIDTH OF ONE TREAD THAT IS REQUIRED AT EACH BOTTOM RISER.

NOTE: X IS THE 12 IN. MIN. HANDRAIL EXTENSION REQUIRED AT EACH TOP RISER.

Y IS THE MIN. HANDRAIL EXTENSION OF 12 IN. PLUS THE WIDTH OF ONE TREAD THAT IS REQUIRED AT EACH BOTTOM RISER.

- Toilet Rooms, Fixtures, and Accessories**
- All public and common use toilet rooms must be accessible per 2010 ADA-ABA Accessibility Guidelines. Private toilet rooms of a private office must be adaptable.
 - At least one type of each fixture and accessory must be accessible; provide path to accessible fixtures.
 - Turning space 60 in. diameter or 3 x 3 ft. (1 m²) in size.
 - At least one type of each fixture and accessory must be accessible; provide path to accessible fixtures.
 - Stall doors may not swing into clear floor space required for fixture; in standard stalls, the front portion of at least one side partition must provide a toe clearance of 9 in. above finish floor (AFF). If stall depth is greater than 60 in., toe clearance not required.
 - Flush, lavatory, and accessory controls: operable with one hand, no tight grasping, pinching, or twisting of wrist; height 48 in. (1220 mm) max. above AFF; operable with closed fist; controls to be mounted on wall side of toilet area.
 - Hand paper towel dispensers, soap dispensers, and other dispensers to be provided to prevent contact.
 - See detail. No sharp or abrasive surfaces under handrests.
 - Toilet paper dispensers that control delivery or do not permit continuous flow may not be used.
 - Coordinate 2010 ADA-ABA with state and local code requirements.
 - All dimensions are for adult use fixtures.
- Ramps**
- Provide at accessible route; slopes greater than 1:20 are considered ramps.
 - Slope maximum 1:12; provide least slope possible; maximum rise of 30 in. per run.
 - Landings should be level at top and bottom of each ramp run and at least as wide as the run leading to it.
 - At 60 x 60 in. landing is required where ramp changes direction. If there is a door at the landing, provide level maneuvering clearances.
 - Provide level maneuvering clearances:
 - 4. Provide level maneuvering clearances greater than 6 in. or greater than 72 in.; both sides.
 - 4. Provide level maneuvering clearances greater than 6 in. or greater than 72 in.; both sides.
 - Either side of ramp shall be a minimum of 60 in. wide.
 - Design outdoor ramps and approaches so that water will not accumulate on surface; maximum cross slope of 1:50.

PROPOSED BUILD-OUT FOR METAIRIE CHURCH

PONTCHARTRAIN PLAZA
3501 SEVERN AVENUE
SUITE 9
METAIRIE, LA.

ARROW ENGINEERING & CONSULTING
DARRELL FUSSELL, P.E.

558 Choctaw Drive
Abita Springs, LA 70420
Phone: 985-237-3908

A DESIGN BUILD PROJECT BY:
KENT CONSTRUCTION, INC.
1875 HIGHWAY 59
MANDEVILLE, LOUISIANA

KENT CONSTRUCTION, INC.

Dwn.	Date
TCM	07/18/12
Rev.	Rev.
Rev.	Rev.

SHEET NO. **A04**