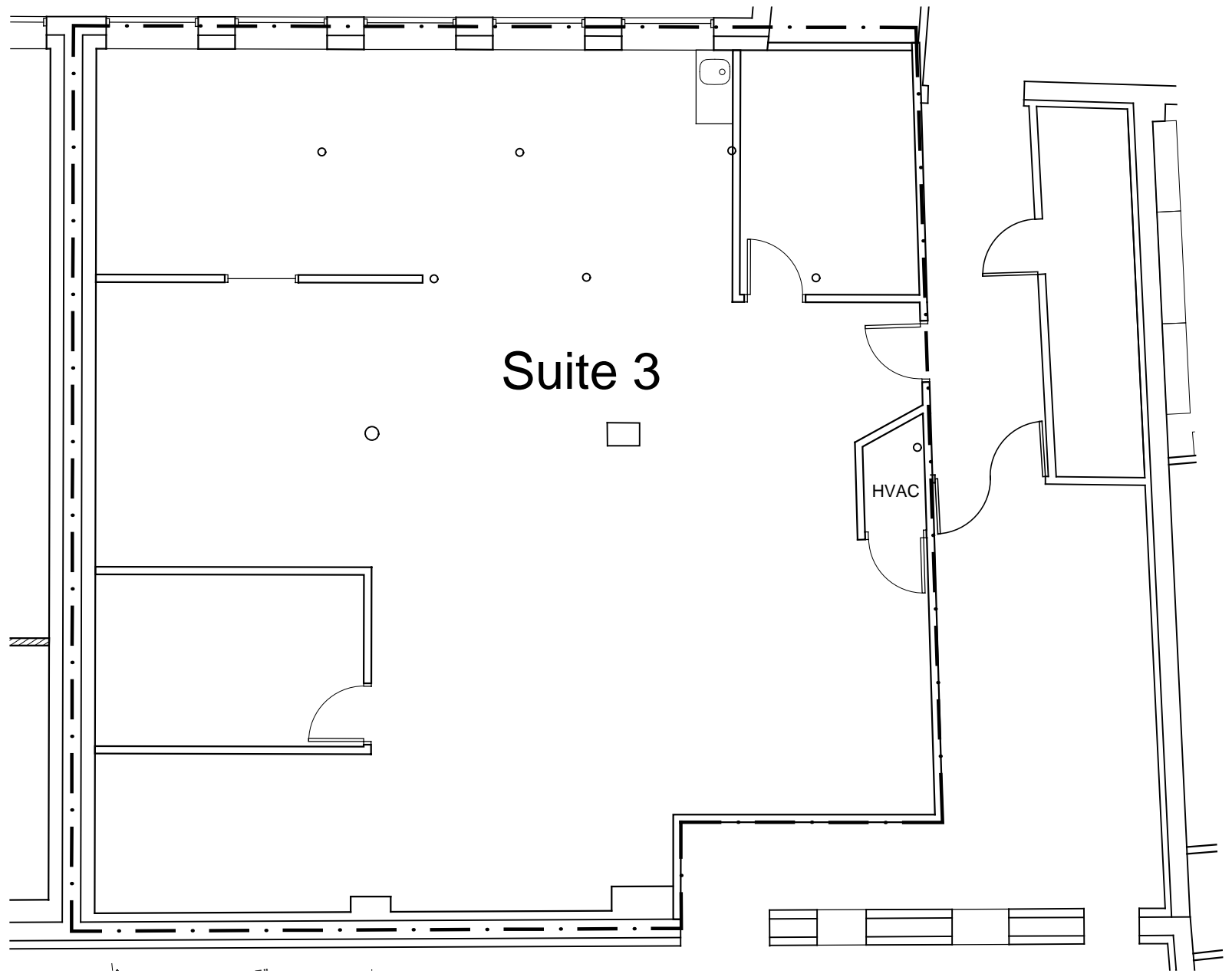


NOTE: Field verify existing conditions as they may have changed since this plan was originally measured in 2014



1/8"=1'-0"

23 May 2018

DSC ARCHITECTS
douglas shoop & associates
one shipyard way • medford
7 8 | . 3 9 | . 1 9 3 9

SUITE 3
1035 CAMBRIDGE STREET CAMBRIDGE, MA

2,646 RSF