



Steve's Repair Shops

47174 Haylie Street, Sioux Falls, SD 57107

Property Features

- Suite 1: 2,250 sq. ft. (25'x90')
- Suite 2: 2,250 sq. ft. (25'x90')
- Channel floor drains
- Bathroom in each bay
- 12'x14' overhead doors at both ends
- **Full drive through!**
- **Perfect for a truck driver shop!**

Pricing

- Lease rate: \$1,500/month NN
- Landlord pays sewer, heat, and snow removal
- Tenant pays electric, water, and prorated share of taxes and insurance

Location

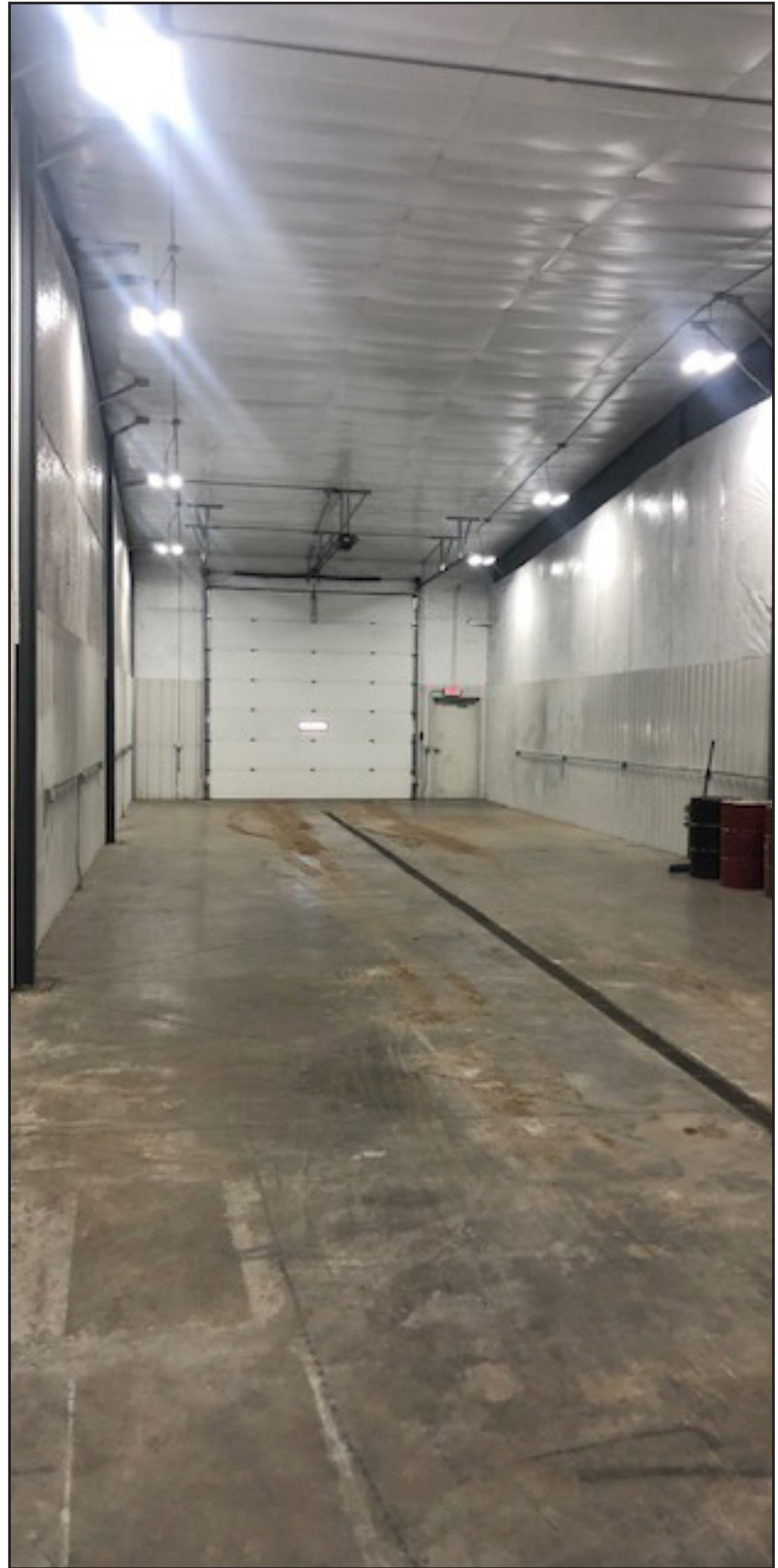
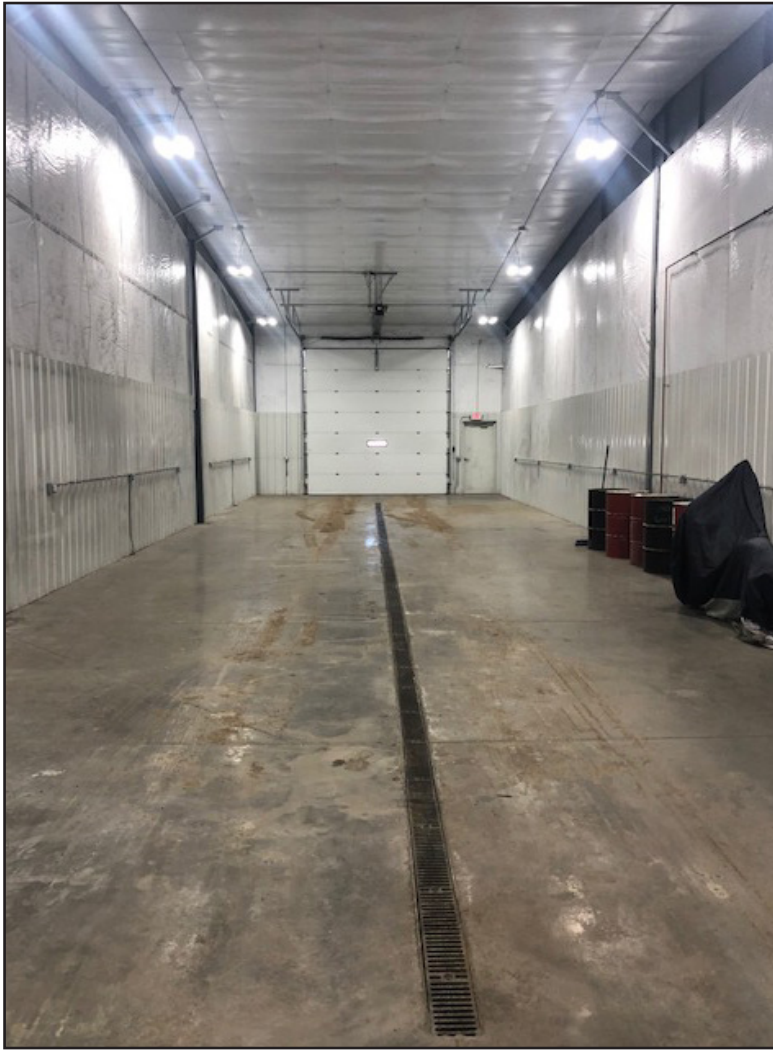
- Located just northwest of Exit 86 off of I-29
- Area neighbors include: Timpte, Boxy's Paint & Body, Master Blaster, Chase Drilling, Stellar Limousine



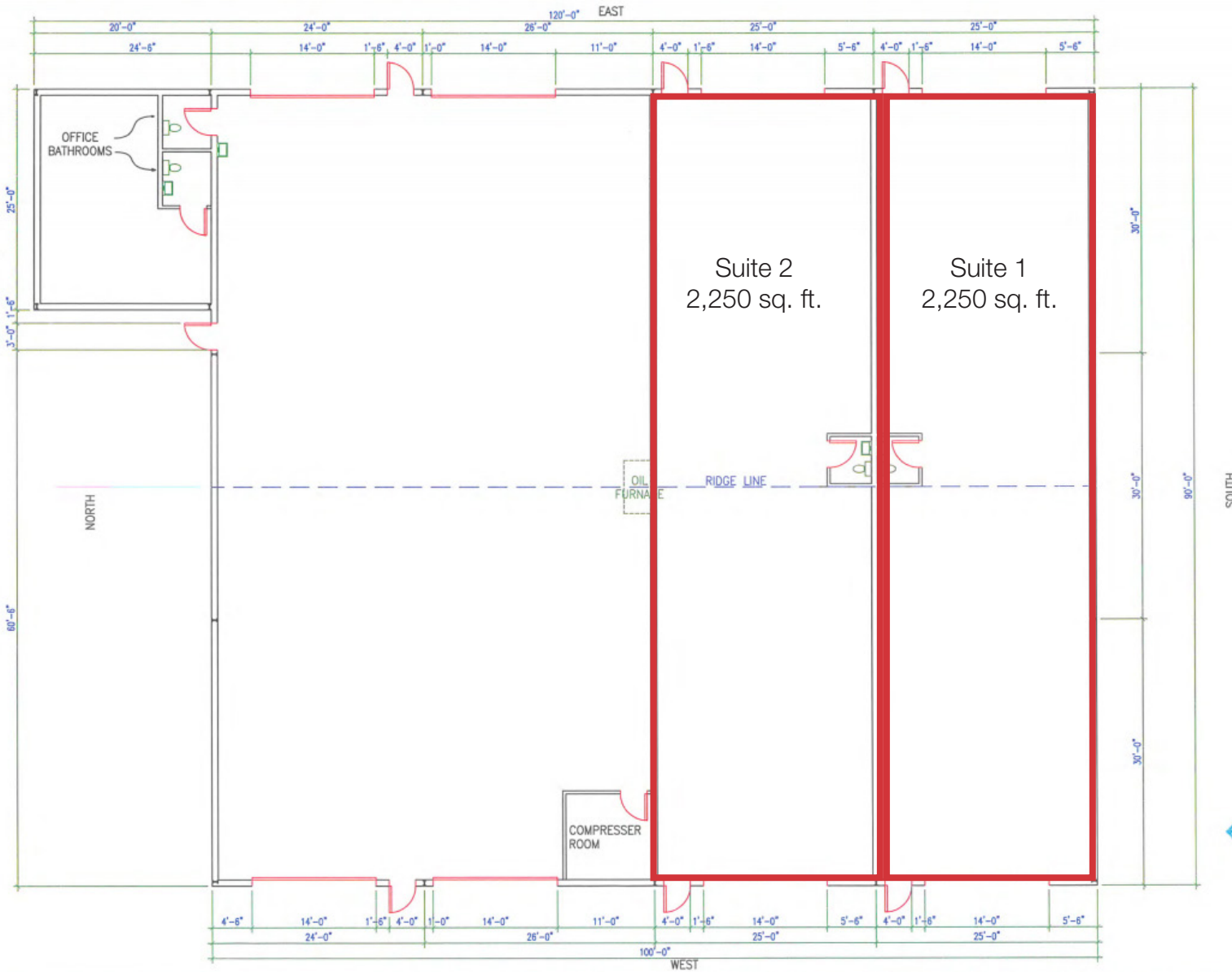
Bill Connelly

+1 605 444 7130 direct
+1 605 254 2360 mobile
bconnelly@naisiouxfalls.com

For Lease
Industrial Shops



For Lease
Industrial Shops



For Lease
Industrial Shops

