

675 - 13,370 SF WESTPORT OFFICE AVAILABLE FOR LEASE

11861 WESTLINE INDUSTRIAL DRIVE | ST. LOUIS, MISSOURI 63146



**\$9.00 PSF FULL SERVICE
INTRODUCTORY RENT
CALL BROKER FOR DETAILS!**



Property Highlights

- Single-level office building offering direct entry
- Unique space sizes available - call for details
- Fully sprinklered
- Great visibility on Westline Industrial Drive
- Ample parking
- Easy access to I-270, Page Ave and Dorsett Road
- Convenient Westport location offering a blend of dining, entertainment and lodging venues
- **LEASE RATE: \$14.00 PSF FULL SERVICE**

For additional information, please contact:

BO KEEFER
bkeefe@hutkin.com
314.708.1258 o.
314.973.1242 m.

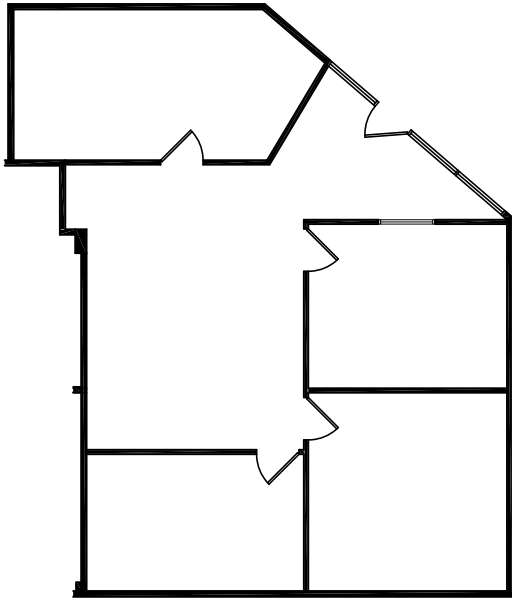
TONY GIARRATANO
tony@hutkin.com
314.708.4922 o.
314.276.2352 m.

HUTKIN
DEVELOPMENT COMPANY

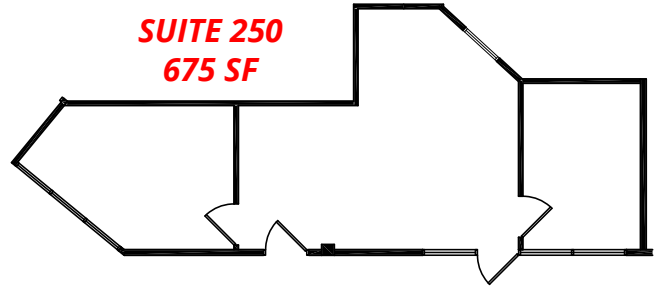
10829 OLIVE BOULEVARD, SUITE 200
ST. LOUIS, MISSOURI 63141
314.872.9140 PHONE
314.872.9001 FAX
WWW.HUTKIN.COM

675 - 13,370 SF WESTPORT OFFICE AVAILABLE FOR LEASE

11861 WESTLINE INDUSTRIAL DRIVE | ST. LOUIS, MISSOURI 63146

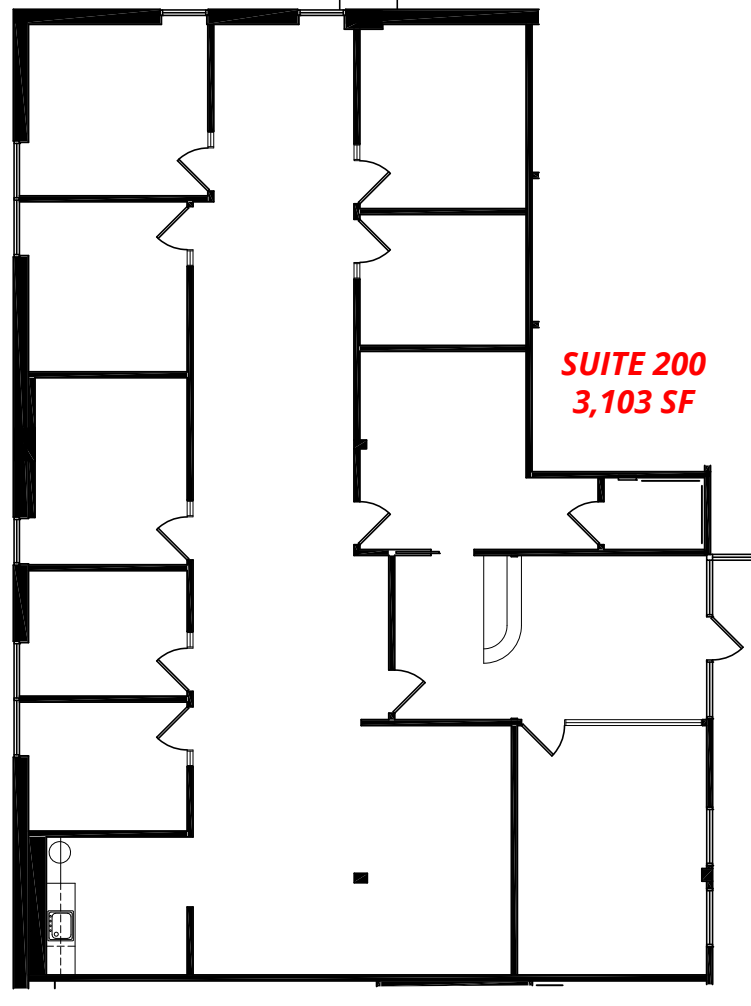
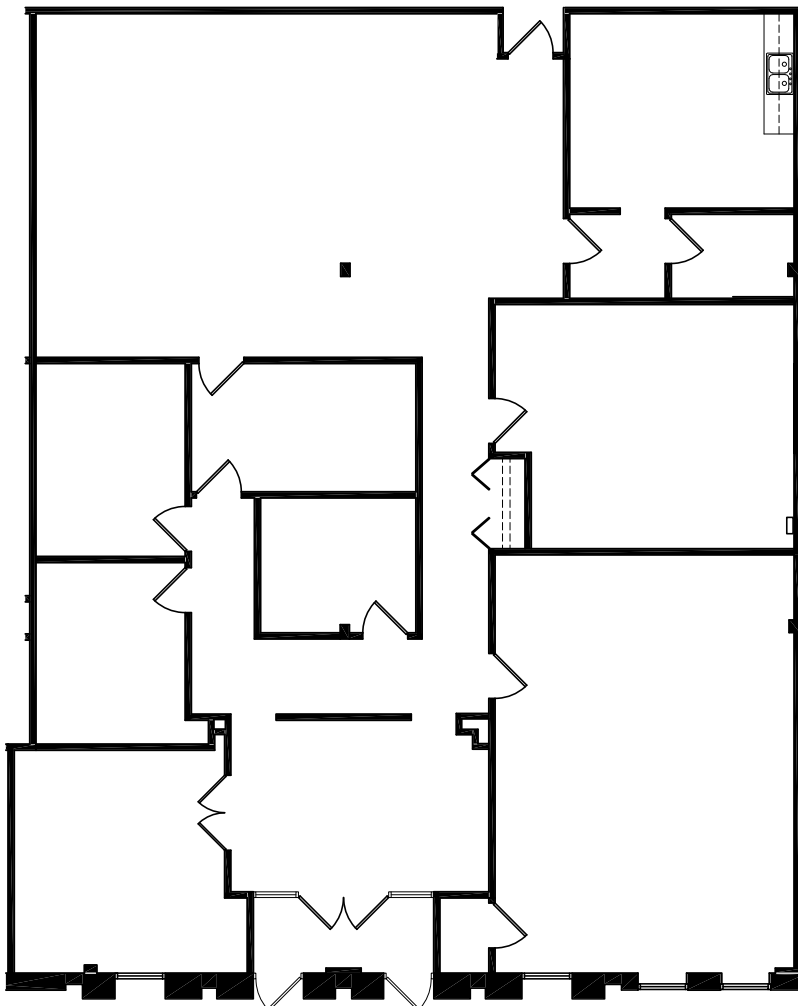


SUITE 660
1,294 SF



SUITE 250
675 SF

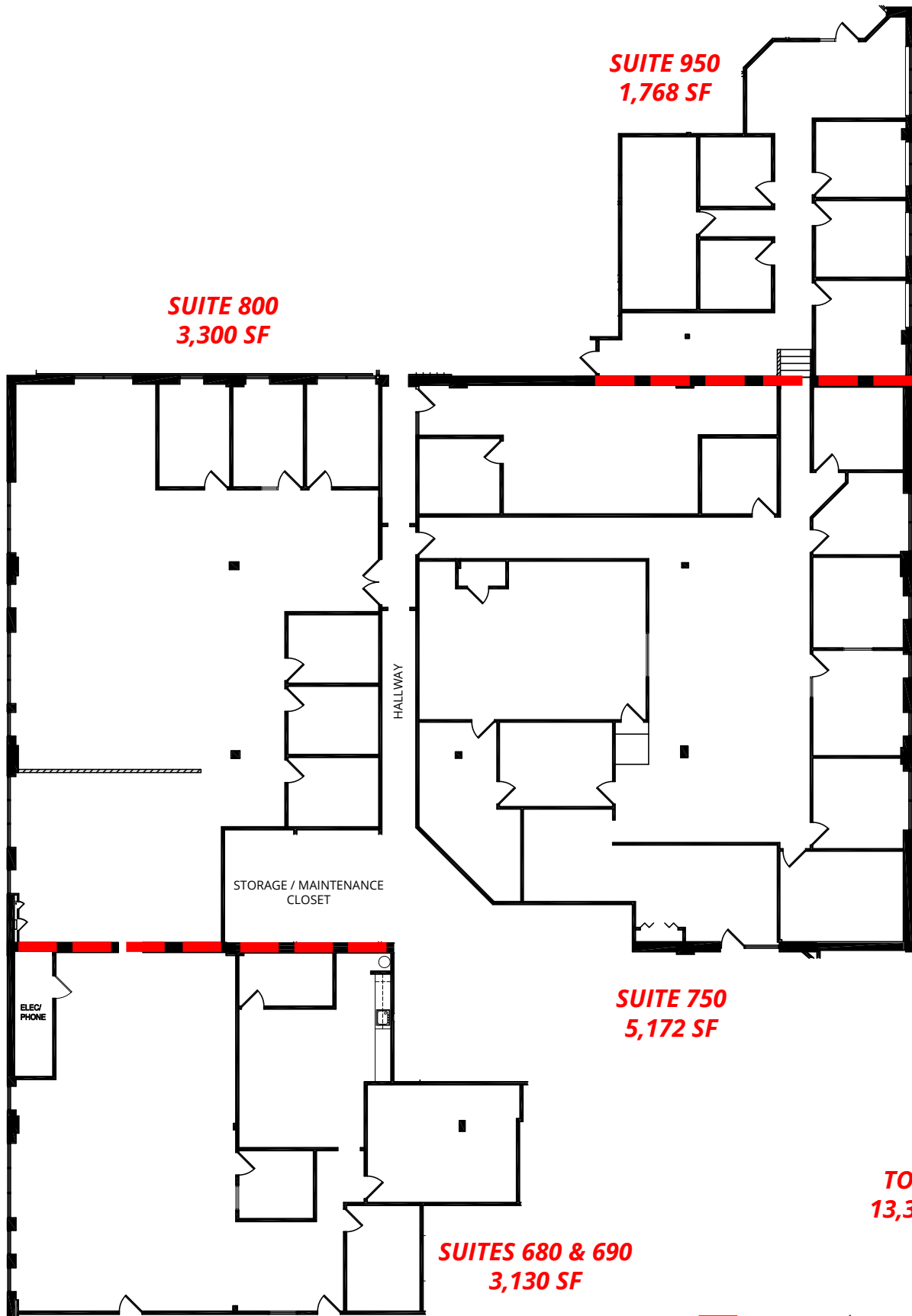
SUITE 700A
3,730 SF



SUITE 200
3,103 SF

675 - 13,370 SF WESTPORT OFFICE AVAILABLE FOR LEASE

11861 WESTLINE INDUSTRIAL DRIVE | ST. LOUIS, MISSOURI 63146

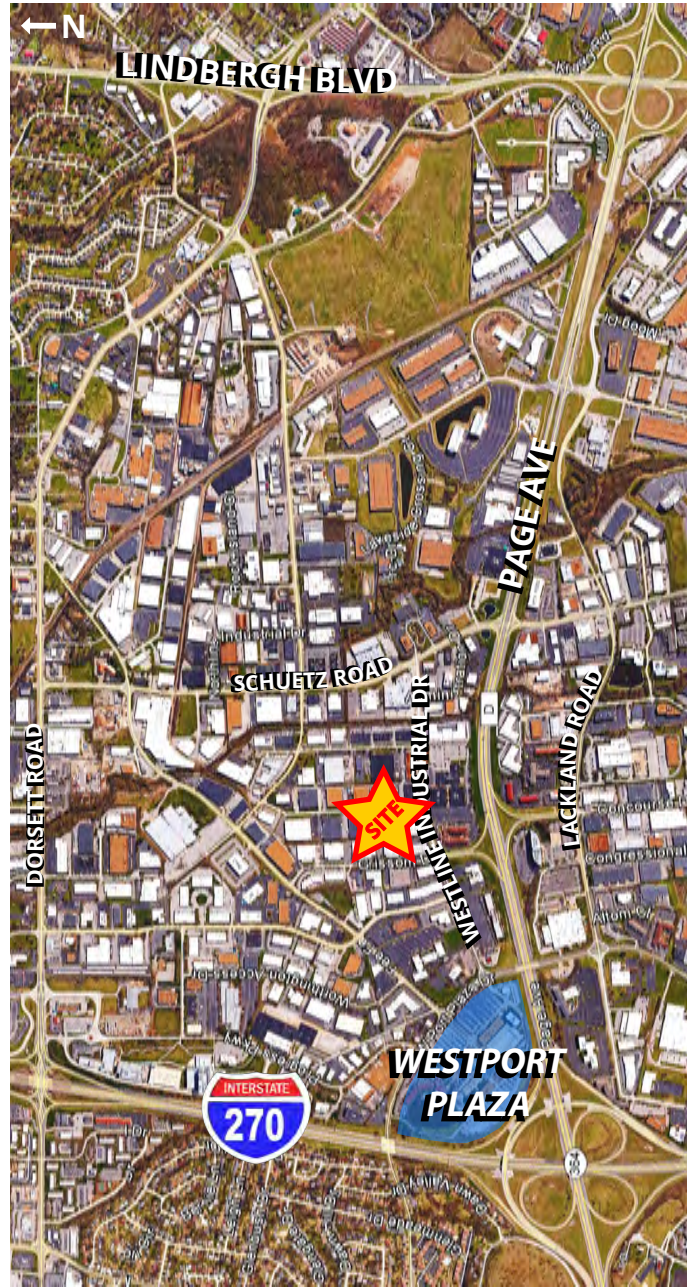
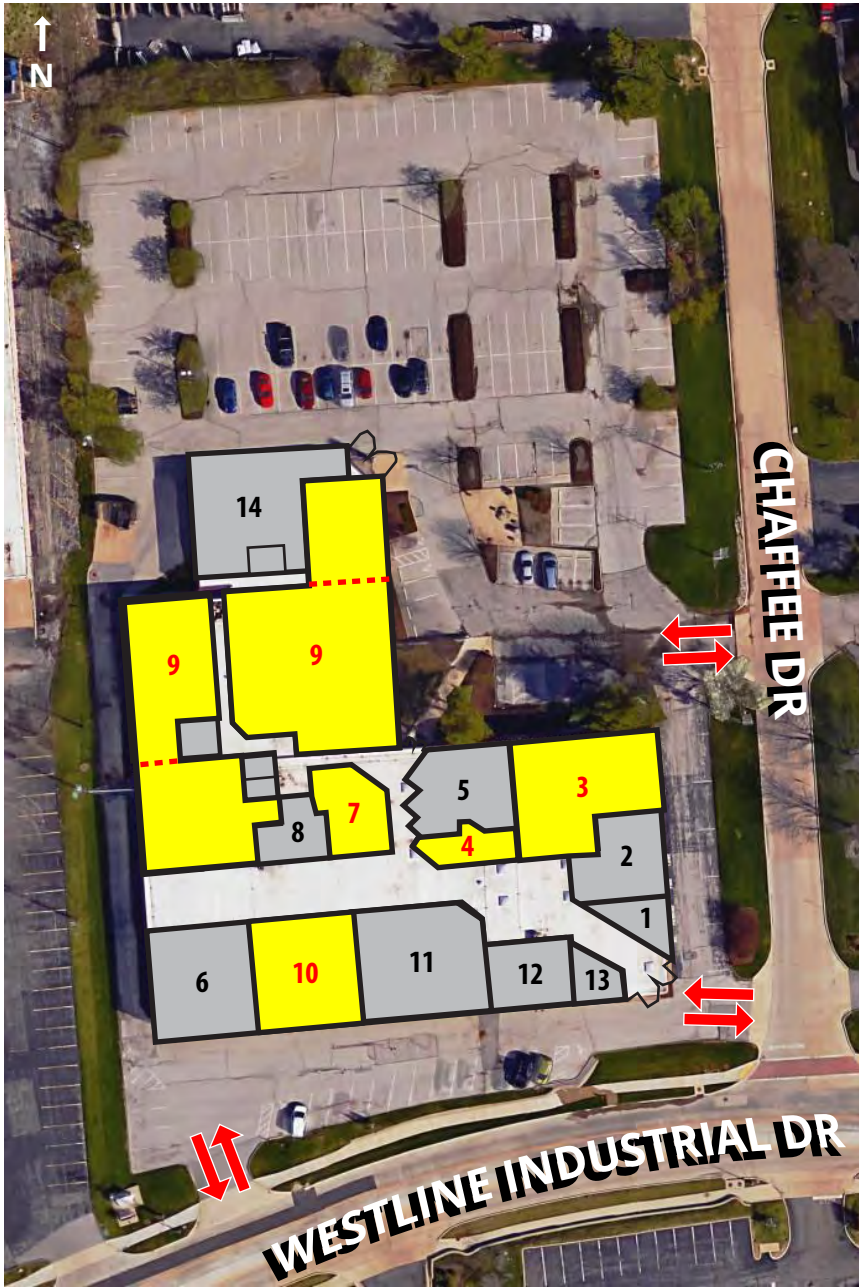


TOTAL:
13,370 SF

— = represents the potential demising of the space

675 - 13,370 SF WESTPORT OFFICE AVAILABLE FOR LEASE

11861 WESTLINE INDUSTRIAL DRIVE | ST. LOUIS, MISSOURI 63146



NO.	SUITE	STATUS	SIZE (SF)
1	100	Occupied	665
2	150	Occupied	1,386
3	200	AVAILABLE	3,103
4	250	AVAILABLE	675
5	300	Occupied	1,557
6	600	Occupied	2,844
7	660	AVAILABLE	1,294

NO.	SUITE	STATUS	SIZE (SF)
8	670	Occupied	960
9	680/690/750/800/950	AVAILABLE	1,768-13,370
10	700A	AVAILABLE	3,730
11	700B-725	Occupied	5,054
12	850	Occupied	1,974
13	850A	Occupied	660
14	900	Occupied	3,049