

For Sale

9301 George Washington Memorial Highway
York County, Virginia



FOR ADDITIONAL INFORMATION, PLEASE CONTACT:

Campana Waltz Commercial Real Estate, LLC

Tom Waltz

11832 Fishing Point Drive, Suite 400

Newport News, Virginia 23606

757.327.0333

Tom@CampanaWaltz.com

www.CampanaWaltz.com

This information was obtained from sources deemed to be reliable, but is not warranted.

This offer subject to errors and omissions, or withdrawal, without notice.



FOR SALE
9301 George Washington Memorial Highway
York County, Virginia

- Location:** 9301 George Washington Memorial Highway, York County
- Description:** A corner parcel that is rectangular in shape. Tremendous road frontage along Route 17 and Siege Lane. This is the First commercial property along Route 17 heading south to Fort Eustis Boulevard.
- Land Area:** 3.31 acres
- Sales Price:** \$525,000.00
- Traffic Count:** 30,000
- Zoning:** LB – Limited Business. Multiple allowable uses by right such as Retail Sales, Childcare, Church, Restaurant, Offices, Medical. A convenience store with gas and/or car wash requires a special use permit.
- Utilities:** All utilities at site – minimal development costs. Drainage will be handled at new York County regional BMP directly across the street on Siege Lane.
- General Information:**
- Route 17
 - Well established area – gateway into the vast Edgehill Residential Community
 - Located directly across the street from York High School
 - In close proximity to retailers and solid residential neighborhoods
 - No wetlands – see enclosed Corps of Engineers letter dated January 31, 2019
- Also Included:**
- Aerial Maps
 - Location Map
 - List of uses which are allowed by right

For Additional Information, Please Contact:

Tom Waltz

Campana Waltz Commercial Real Estate, LLC

11832 Fishing Point Drive, Suite 400

Newport News, Virginia, 23606

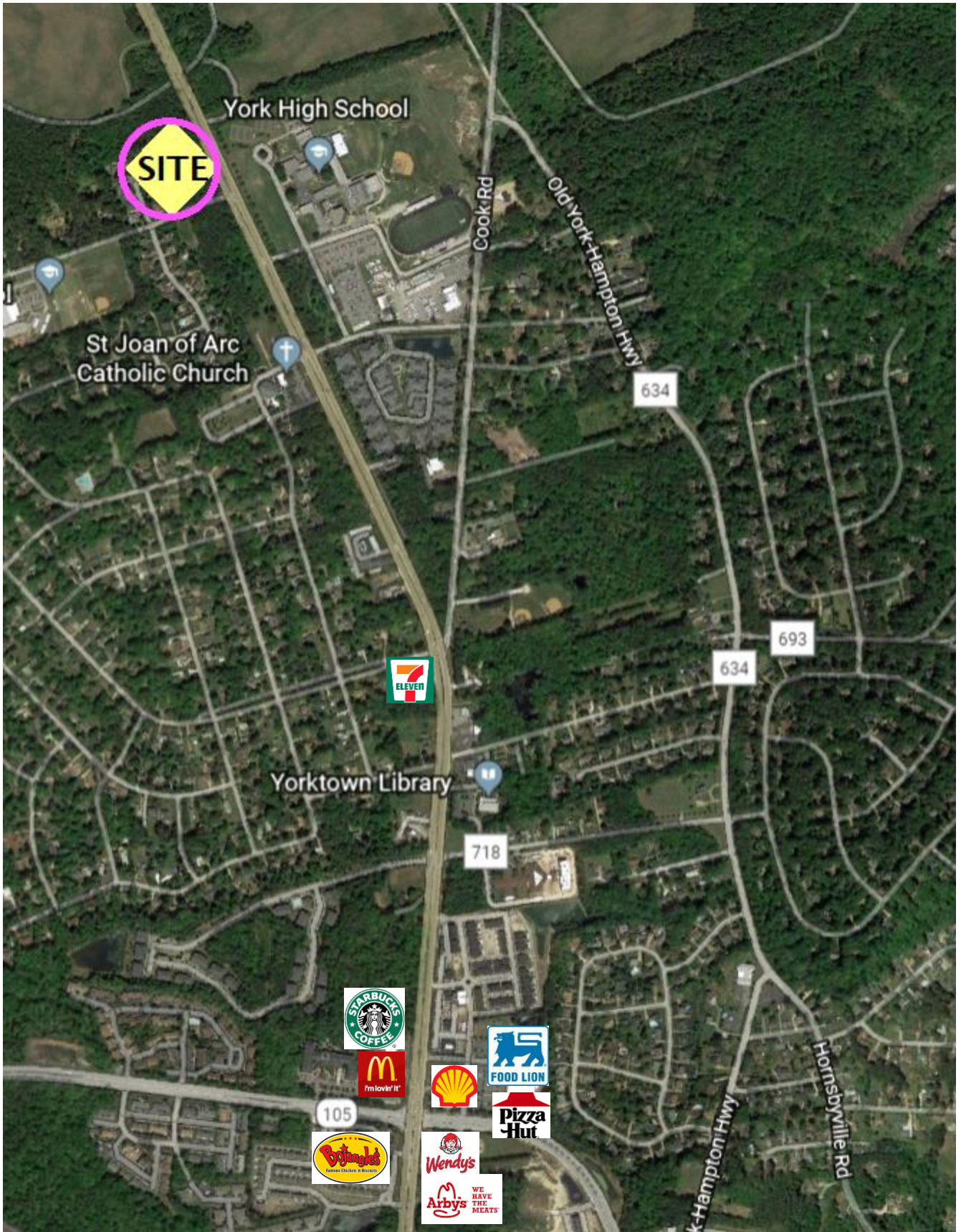
757.327.0333

Tom@CampanaWaltz.com

www.CampanaWaltz.com

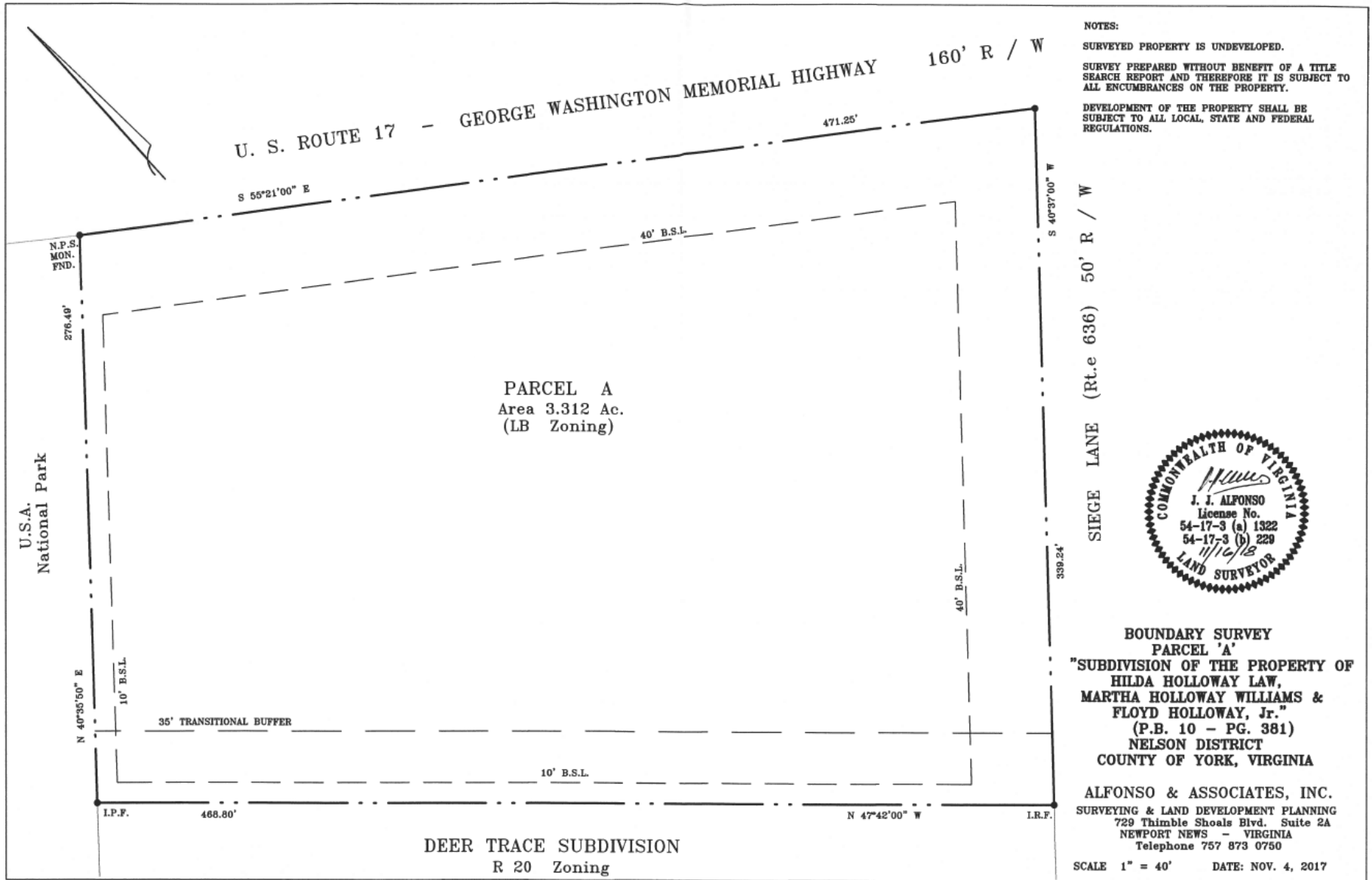


*This information was obtained from sources deemed to be reliable but is not warranted.
This offer subject to errors and omissions or withdrawal without notice.*



*This information was obtained from sources deemed to be reliable but is not warranted.
This offer subject to errors and omissions, or withdrawal, without notice.*

9301 George Washing Memorial Highway, Yorktown, Virginia



*This information was obtained from sources deemed to be reliable but is not warranted.
This offer subject to errors and omissions, or withdrawal, without notice.*





DEPARTMENT OF THE ARMY
US ARMY CORPS OF ENGINEERS
NORFOLK DISTRICT
FORT NORFOLK
803 FRONT STREET
NORFOLK VA 23510-1011

January 31, 2019

APPROVED JURISDICTIONAL DETERMINATION

Southern Virginia Regulatory Section
NAO-2018-0771 (Beaverdam Creek)

The Commonwealth Company
Attn: Mr. Harvey Weinstein
11838 Rock Landing Drive, Suite 205
Newport News, VA 23606

Dear Mr. Weinstein:

This letter is in regard to your request for verification of an approved jurisdictional determination for the waters of the U.S. (including wetlands) on a 3.31 acre parcel known as 9301 George Washington Memorial Highway, in York County, Virginia (tax map parcel # P09b-4405-3593).

An on-site jurisdictional determination has found no waters and/or wetlands regulated under Section 10 of the Rivers and Harbors Act (33 U.S.C. 403) and/or Section 404 of the Clean Water Act (33 U.S.C. 1344) on the property listed above. This letter shall serve to confirm the wetlands delineation by Roth Environmental, LLC, as shown on the map titled, "WETLAND DELINEATION MAP 9301 GEORGE WASHINGTON MEMORIAL HIGHWAY YORKTOWN, VIRGINIA" dated November 16, 2018 (*copy attached*).

Discharges of dredged or fill material, including those associated with mechanized landclearing, into jurisdictional waters and/or wetlands on this site will require a Department of the Army permit and may require authorization by state and local authorities, including a Virginia Water Protection Permit from the Virginia Department of Environmental Quality (DEQ), a permit from the Virginia Marine Resources Commission (VMRC) and/or a permit from your local wetlands board. This letter is a confirmation of the Corps jurisdiction for the waters and/or wetlands on the subject property and does not authorize any work in these jurisdictional areas. Please obtain all required permits before starting work in the delineated waters/wetland areas.

The Norfolk District has relied on the information and data provided by the applicant or agent. If such information and data subsequently prove to be materially false or materially incomplete, this verification may be suspended or revoked, in whole or in part, and/or the Government may institute appropriate legal proceedings.

This letter contains an approved jurisdictional determination for your subject site. If you object to this determination, you may request an administrative appeal under Corps regulations at 33 CFR Part 331. Enclosed you will find a Notification of Appeal Process

(NAP) fact sheet and Request for Appeal (RFA) form. If you request to appeal this determination you must submit a completed RFA form to the North Atlantic Division Office at the following address:

ATTN: Mr. James Haggerty, Regulatory Program Manager
United States Army Corps of Engineers
CENAD-PD-OR
Fort Hamilton Military Community
301 General Lee Avenue
Brooklyn, NY 11252-6700
Email: james.w.haggerty@usace.army.mil

In order for an RFA to be accepted by the Corps, the Corps must determine that it is complete, that it meets the criteria for appeal under 33 C.F.R. part 331.5, and that it has been received by the Division Office within 60 days of the date of the NAP. Should you decide to submit an RFA form, it must be received at the above address by July 9, 2017 (60 days). It is not necessary to submit an RFA form to the Division office if you do not object to the determination in this letter.

This jurisdictional determination is valid for a period of five (5) years from the date of this letter unless new information warrants revision prior to the expiration date. If you have any questions, please contact Ms. Sayward McLaughlin either via telephone at (757) 201-7580 or via email at Sayward.a.meincke@usace.army.mil.

Sincerely,

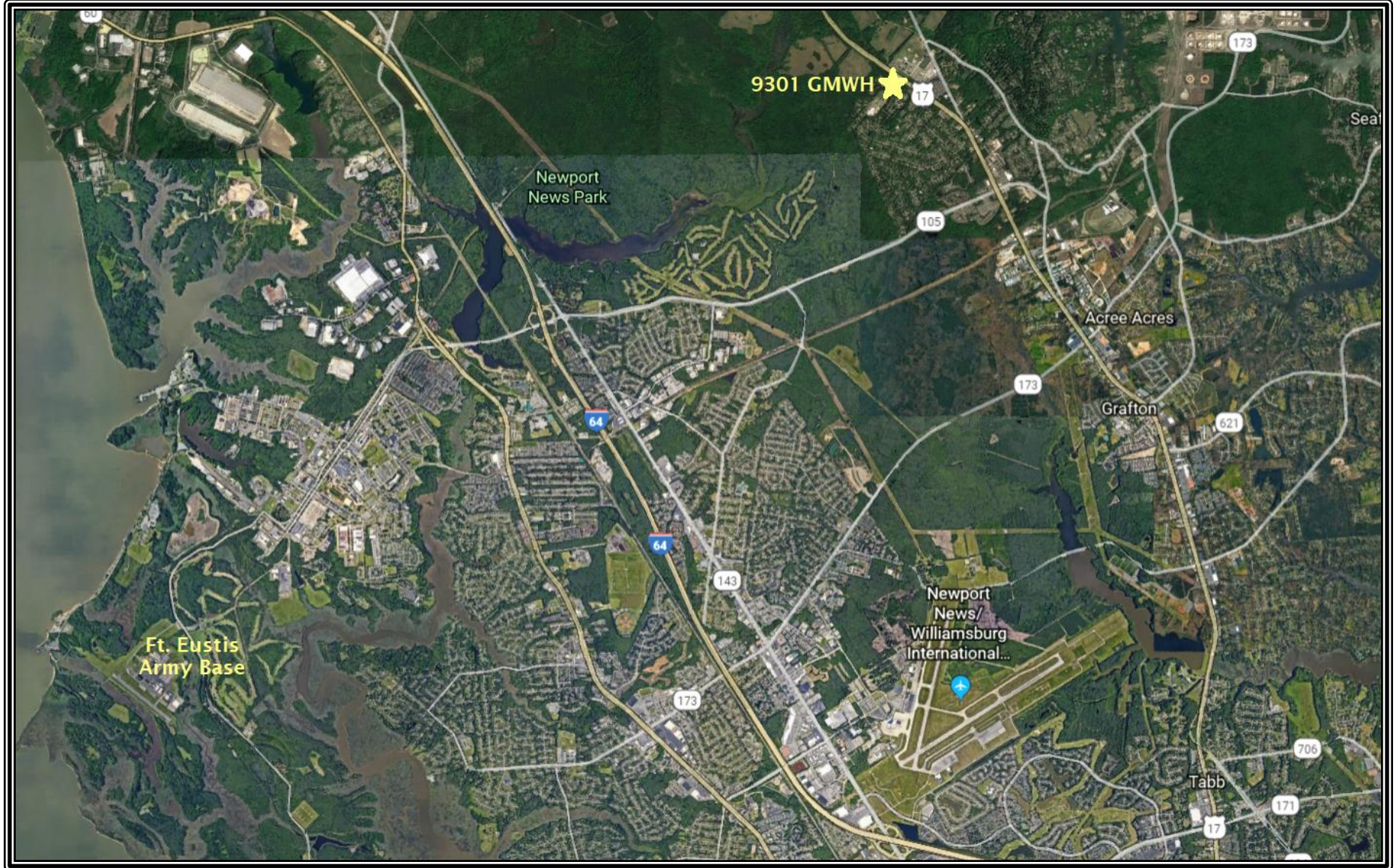
PERO.VINCENT.D.1
270778255

Digitally signed by PERO.VINCENT.D.1270778255
DN: c=US, o=U.S. Government, ou=DoD, ou=PKI,
ou=USA, cn=PERO.VINCENT.D.1270778255
Date: 2019.02.04 10:01:50 -05'00'

Vincent D Pero
Acting Chief, Southern Virginia
Regulatory Section

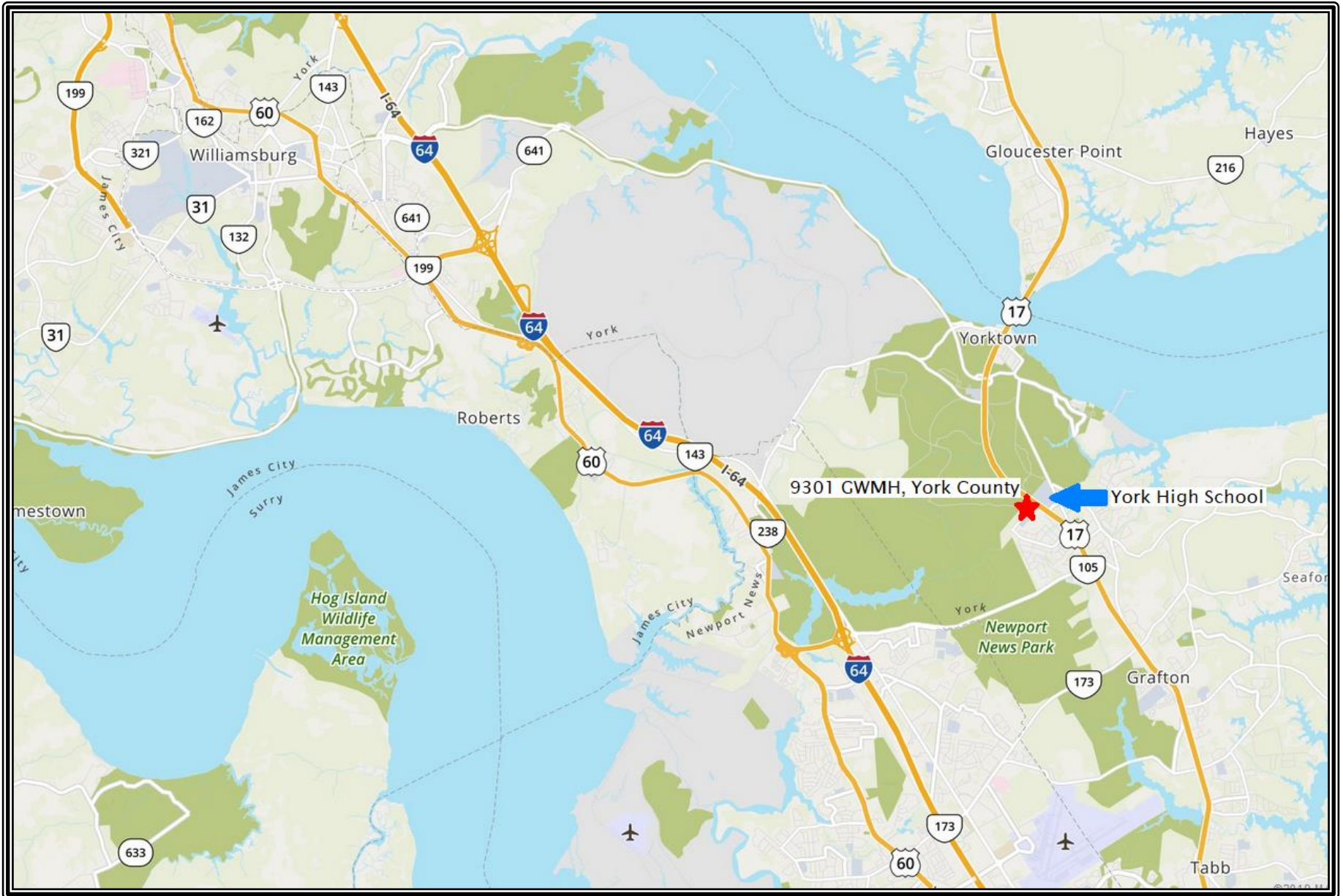
Enclosure(s)

9301 George Washing Memorial Highway, Yorktown, Virginia



*This information was obtained from sources deemed to be reliable but is not warranted.
This offer subject to errors and omissions, or withdrawal, without notice.*

9301 George Washing Memorial Highway, Yorktown, Virginia



*This information was obtained from sources deemed to be reliable but is not warranted.
This offer subject to errors and omissions, or withdrawal, without notice.*

- (d) In the event of conflict between the Tables of Lot and Building Dimensional Requirements and the text of this chapter, the text shall control.

Sec. 24.1-305. Additional requirements.

- (a) Additional provisions which may be directly applicable to the types of development permitted in the zoning districts are contained in other sections of this chapter and may qualify or supplement the regulations presented within each district. Furthermore, other provisions of the code, including without limitation, the erosion and sediment control ordinance, stormwater management ordinance and subdivision ordinance may affect the use and development of land.
- (b) Performance standards for most uses are contained in article IV of this chapter. These are minimum standards which must be achieved for the establishment of the use to which they pertain whether the use is permitted as a matter of right or only by a special or administrative permit. Additional performance standards may be imposed during the issuance of special use permits in accordance with the applicable provisions of this chapter.

Sec. 24.1-306. Table of land uses.

USES	RESIDENTIAL DISTRICTS							COMMERCIAL AND INDUSTRIAL DISTRICTS						
	RC	RR	R33	R20	R13	R7	RMF	NB	LB	GB	WCI	EO	IL	IG
	CATEGORY 1 - RESIDENTIAL USES													
1. Residential - Conventional														
a) Single-Family, Detached	P	P	P	P	P		S							
b) Single-Family, Attached														
• Duplex					S		P							
• Townhouse							P							
• Multiplex							P							
c) Multi-Family							P							
d) Manufactured Home (Permanent)						P								
2. Residential (Cluster Techniques Open Space Development)														
a) Single-Family, Detached	P	P	P	P	P									
b) Single-Family, Attached														
• Duplex	S	S	S	S	S									
3. RESERVED														
4. Manufactured Home Park						S								
5. Boarding House		S					S							
6. Tourist Home, Bed and Breakfast	S	S	S	S	S		S	P	P					
7. Group Home (for more than 8 occupants)		S	S	S	S		S							
8. Transitional Home		S	S	S	S		S							
9. Senior Housing – Independent Living Facility														
(a) detached or attached units w/individual outside entrances							S							
(b) multi-unit structures w/internal entrances							S	S	S		S			
(c) multi-unit structure w/internal or external entrances to individual units when established in an adapted structure formerly used as hotel or motel.								S	S		S			

(Ord. No. 03-2, 1/21/03; Ord. No. 03-8(R), 3/4/03; Ord. No. 03-25, 6/17/03; Ord. No. 08-17(R), 3/17/09; Ord. No. 11-15(R), 11/16/11; Ord. No. 13-16, 11/19/13; Ord. No. 14-12, 6/17/14; Ord. No. 14-20(R), 10/21/14)

P=PERMITTED USE S=PERMITTED BY SPECIAL USE PERMIT	RESIDENTIAL DISTRICTS							COMMERCIAL AND INDUSTRIAL DISTRICTS						
	RC	RR	R33	R20	R13	R7	RMF	NB	LB	GB	WCI	EO	IL	IG
USES	CATEGORY 2 - AGRICULTURE, ANIMAL KEEPING, AND RELATED USES													
1. Aquaculture	P										P		P	P
2. Agriculture	P	P											P	P
3. RESERVED														
4. Plant Nursery or Greenhouse														
a) Wholesale Only	P	P								P		P	P	
b) Retail Sales with or without wholesale sales	S									P		P	P	
c) Retail or Wholesale with accessory landscape contracting storage & equipment	S	S							P		S	P	P	P
5. RESERVED														
6. RESERVED														
7. Animal Hospital, Vet Clinic, Commercial Kennel														
a) Without Outside Runs	S	S					S		S	P		P	P	P
b) With Outside Runs	S	S							S	S		S	P	P
8. Commercial Stables		S											S	S
9. Commercial Orchard or Vineyard	P	P											P	P
10. Forestry	P	P											P	P
11. Farmer's Market	S							P		P		P	P	P

(Ord. No. 11-15(R), 11/16/11; Ord. No. 14-12, 6/17/14; Ord. No. 14-20(R), 10/21/14)

P=PERMITTED USE S=PERMITTED BY SPECIAL USE PERMIT	RESIDENTIAL DISTRICTS							COMMERCIAL AND INDUSTRIAL DISTRICTS						
	RC	RR	R33	R20	R13	R7	RMF	NB	LB	GB	WCI	EO	IL	IG
USES	CATEGORY 3 - RESERVED													

(Ord. No. 14-20(R), 10/21/14)

P=PERMITTED USE S=PERMITTED BY SPECIAL USE PERMIT	RESIDENTIAL DISTRICTS							COMMERCIAL AND INDUSTRIAL DISTRICTS						
	RC	RR	R33	R20	R13	R7	RMF	NB	LB	GB	WCI	EO	IL	IG
USES	CATEGORY 4 - COMMUNITY USES													
1. Meeting Halls, Recreational, Social Uses, or Private Clubs Operated by Social, Fraternal, Civic, Public, or Similar Organizations		S	S	S	S	S	S	S	S	P	S			P
2. Any Recreational or Social Uses Approved as a Part of a Subdivision or Site Plan and Operated Primarily for Use of Residents or Occupants of Such Development	P	P	P	P	P	P	P				P			

(Ord. No. 14-12, 6/17/14)

CODE OF THE COUNTY OF YORK, VIRGINIA

CHAPTER 24.1

PERMITTED USE S=PERMITTED BY SPECIAL USE PERMIT	RESIDENTIAL DISTRICTS							COMMERCIAL AND INDUSTRIAL DISTRICTS						
	RC	RR	R33	R20	R13	R7	RMF	NB	LB	GB	WCI	EO	IL	IG
	CATEGORY 5 - EDUCATIONAL USES													
1. Pre-school, Child Care, Nursery School		S	S	S	S	S	S	P	P	P	S	P		
2. Elementary, Intermediate, High School and/or Vo-Tech and Related Support Facilities														
a) York County Public Schools	P	P	P	P	P	P	P	P	P	P	S	S	S	S
b) Other		S	S	S	S	S	S	S	S	P	S	S	S	S
3. Technical, Vocational, Business School									S	P		P	P	
4. College/University		S							S	P		P		

(Ord. No. 14-12, 6/17/14)

P=PERMITTED USE S=PERMITTED BY SPECIAL USE PERMIT	RESIDENTIAL DISTRICTS							COMMERCIAL AND INDUSTRIAL DISTRICTS						
	RC	RR	R33	R20	R13	R7	RMF	NB	LB	GB	WCI	EO	IL	IG
	CATEGORY 6 - INSTITUTIONAL USES													
1. Place of Worship including Accessory Parsonage, Parochial School, Accessory Day Care, Accessory Cemetery		P	P	P	P	P	P	P	P	P				
1a. Convent/Monastery		S					S		S			S		
2. Senior Housing – Congregate Care							S		S	S		S		
3. Senior Housing – Assisted Living							S		S	S		S		
4. Senior Housing – Continuing Care Retirement Community							S		S	S		S		
5. Nursing Home		S	S	S	S		S		S	S		S		
6. Medical Care Facility, including General Care Hospital, Trauma Center									S	P		P		
7. Emergency Care/First-Aid Centers or Clinic									P	P		P		
8. Secured Medical Facility										S				

(Ord. No. 11-15(R), 11/16/11; Ord. No. 14-12, 6/17/14)

P=PERMITTED USE S=PERMITTED BY SPECIAL USE PERMIT	RESIDENTIAL DISTRICTS							COMMERCIAL AND INDUSTRIAL DISTRICTS						
	RC	RR	R33	R20	R13	R7	RMF	NB	LB	GB	WCI	EO	IL	IG
	CATEGORY 7 - PUBLIC AND SEMI-PUBLIC USES													
1. Conference Center									P	P		P		
2. Post Office								P	P	P		P		
3. Animal Shelter		S											S	S
4. Museum									P	P	S	P		
5. Government Offices	P	P	P	P	P	P	P	P	P	P	P	P	P	P
6. Libraries		P	P	P	P	P	P	P	P	P	P	P	P	P
7. Public Safety Facilities (Fire, Rescue, Sheriff)	P	P	P	P	P	P	P	P	P	P	P	P	P	P
8. Park or Recreation Facilities (Civic or Semi-Public), excluding golf courses	S	S	S	S	S	S	S	S		P	S	P	S	S
9. Governmental Park & Recreation Facilities (Athletic and Non-Athletic)	P	P	P	P	P	P	P	P	P	P	P	P	P	P
10. Cemetery	S	S	S	S	S	S	S		P	P				
11. Military Installation	P	P												

CODE OF THE COUNTY OF YORK, VIRGINIA

CHAPTER 24.1

12. Correctional Facility	P							P	P	P	P		P	P
a) County Jail													S	S
b) Other Facility														

(Ord. No. 14-12, 6/17/14)

USES	RESIDENTIAL DISTRICTS							COMMERCIAL AND INDUSTRIAL DISTRICTS						
	RC	RR	R33	R20	R13	R7	RMF	NB	LB	GB	WCI	EO	IL	IG
	CATEGORY 8 - TEMPORARY USES													
1. Carnival, Circus, Fair, Festival or Similar Special Event	A	A	A	A	A	A	A	A	A	A	A	A	A	A
2. Sale of Seasonal Items such as Christmas Trees, Produce	A	A	A	A	A	A	A	A	A	A	A	A	A	A
3. Recycling Collection Point	A	A	A	A	A	A	A	A	A	A	A	A	A	A
4. Craft Shows & Sales	A	A	A	A	A	A	A	A	A	A	A	A	A	A
5. Flea Markets										S			S	S
6. Temporary Construction Office Trailers & Buildings	A	A	A	A	A	A	A	A	A	A	A	A	A	A
7. Temporary Construction Workers' Parking	S	S	S	S	S	S	S	P	P	P	P	P	P	P
8. Temporary Home While Constructing Permanent Dwelling Facilities	A	A	A	A	A		A			A				
9. Temporary Trailers for Business or School Use	A	A	A	A	A	A	A	A	A	A	A	A	A	A
10. Model Home Display Parks										S			S	
11. Mobile Food Vending Vehicle (Food Trucks)								A	A	A	A	A	A	A

(Ord. No. 14-12, 6/17/14; Ord. No. 15-15(R), 1/19/16)

USES	RESIDENTIAL DISTRICTS							COMMERCIAL AND INDUSTRIAL DISTRICTS						
	RC	RR	R33	R20	R13	R7	RMF	NB	LB	GB	WCI	EO	IL	IG
	CATEGORY 9 - RECREATION AND AMUSEMENT (NON-GOVERNMENTAL)													
1. Theater - Indoor										P		P		
2. Health, Exercise, Fitness Centers Including Swimming and Racquet Sports														
a) Indoor Only								S	P	P		P	P	P
b) Indoor & Outdoor									S	P		P	P	P
3. Bowling Alley										P		P		
4. Video Arcade, Pool Hall, Billiards Hall, Bingo Hall										S		S		
5. Indoor Family Amusement Center										S		P		
6. Skating Rink										P		P		
7. Firing Range-Indoor Only											S		S	S
8. Paintball Gun Firing Range-outdoor	S													S
9. Miniature Golf, Waterslide, Skateboard Rink, Baseball Hitting Range, Outdoor Commercial Amusement										S		S		
10. Golf Driving Range	S									P		S	S	S
11. Country Club or Golf Course, Public or Private	S	S	S	S	S	S	S		S			S		
12. Campgrounds	S	S									S	S		
13. Theme Park, Amphitheater, Stadium											S		S	S
14. Marina, Dock, Boating Facility (Commercial)											P		P	P
15. Marina, Dock, Boating Facility (Private/Club)	S	S	S	S	S	S	S				P		P	P

(Ord. No. 14-12, 6/17/14)

USES	RESIDENTIAL DISTRICTS							COMMERCIAL AND INDUSTRIAL DISTRICTS						
	RC	RR	R33	R20	R13	R7	RMF	NB	LB	GB	WCI	EO	IL	IG
	CATEGORY 10 - COMMERCIAL / RETAIL													
1. Antiques/Reproductions, Art Gallery								P	P	P	P	P		
2. Wearing Apparel Store								P	P	P		P		
3. Appliance Sales										P		P		
4. Auction House									P	P		S		
5. Convenience Store								S	S	S		S		
6. Grocery Store								P		P		P		
7. Book, Magazine, Card Shop								P	P	P		P		
8. Camera Shop, One-Hour Photo Service								P	P	P		P		P
9. Florist								P	P	P		P		P
10. Gifts, Souvenirs Shop									P	P		P		
11. Hardware, Paint Store									P	P		P	P	P
12. Hobby, Craft Shop									P	P		P		
13. Household Furnishings, Furniture										P		P		
14. Jewelry Store									P	P		P		
15. Lumberyard, Building Materials										S			P	P
16. Music, Records, Video Tapes									P	P		P		
17. Drug Store								S	S	P		P		
18. Radio and TV Sales									S	P		P		
19. Sporting Goods Store									P	P		P		
20. Firearms Sales and Service									S	S		S		
21. Tobacco Store									P	P		P		
22. Toy Store									S	P		P		
23. Gourmet Items/Health Foods/Candy/ Specialty Foods/Bakery Shops								P	P	P		P		
24. ABC Store									P	P		P		
25. Bait, Tackle/Marine Supplies Including Incidental Grocery Sales										P	P	P	S	S
26. Office Equipment & Supplies									P	P		P	P	P
27. Pet Store								S	P	P		P		
28. Bike Store, Including Rental/Repair								P	P	P		P		P
29. Piece Goods, Sewing Supplies								P	P	P		P		
30. Optical Goods, Health Aids or Appliances									P	P		P		P
31. Fish, Seafood Store										P	P	P		
32. Department, Variety, Discount Store										P		P		
33. Auto Parts, Accessories (new parts)									P	P		P		
34. Second Hand, Used Merchandise Retailers (household items, etc.)														
a) without outside display/storage									P	P				
b) with outside display/storage									S	S				
35. Storage shed and utility building sales/display										S			P	P
36. Home Improvement Center										P		P		

(Ord. No. 14-12, 6/17/14)
 See Section 24.1-466(g) for special provisions applicable to developments with 80,000 or more square feet of gross floor area.

CODE OF THE COUNTY OF YORK, VIRGINIA

CHAPTER 24.1

USES	RESIDENTIAL DISTRICTS							COMMERCIAL AND INDUSTRIAL DISTRICTS						
	RC	RR	R33	R20	R13	R7	RMF	NB	LB	GB	WCI	EO	IL	IG
	CATEGORY 11 – BUSINESS / PROFESSIONAL SERVICE													
1. Broadcasting Studio									P	P		P	P	P
2. Barber/Beauty Shop								P	P	P		P		P
3. Apparel Services (Dry Cleaning/Laundry retail) Laundromat, Tailor, Shoe Repair, etc.)								P	P	P		P	P	P
4. Funeral Home (may include cremation services)									S	P		P		
4a. Cremation Services (human or pets)										S			S	S
5. a) Photographic Studio								S	P	P		P	P	P
b) Film Processing Lab									S	P		P	P	P
6. Household Items Repair										P		P	P	P
7. Fortune Teller										S				
7.1 Tattoo Parlor													S	
7.2 Pawn Shop										S				
8. a) Banks, Financial Institutions								P	P	P		P		
b) Freestanding Automatic Teller Machines								P	P	P	S	P		
8.1 Payday Loan Establishments										S				
9. Offices							S	P	P	P		P	P	P
10. Hotel & Motel									S	P	S	P		
11. Timeshare Resort							S			S	S	S		
12. Restaurant/Sit Down									P	P		P		
13. Restaurant/Brew-Pub										P		P		
14. Restaurant/Fast Food									S	P		S		
15. Restaurant/Drive In									S	P		S		
16. Restaurant - Carryout/Delivery only								S	P	P		S		
17. Catering Kitchen/Services								S	P	P		S		
18. Nightclub									S	S		S		
19. Commercial Reception Hall or Conference Center								S	S	P	S	P		
20. Small-Engine Repair (lawn and garden equipment, outboard motors, etc.)										P	P		P	P
21. Tool, Household Equipment, Lawn & Garden Equipment, Rental Establishment										P		P	P	P
22. Establishments Providing Printing, Photocopying, Blueprinting, Mailing, Facsimile Reception & Transmission or similar business services to the general public, and business and professional users									P	P		P	P	P
23. Professional Pharmacy								P	P	P		P		

(Ord. No. 05-34(R), 12/20/05; Ord. No. 06-21, 9/19/06; Ord. No. 14-12, 6/17/14)

USES	RESIDENTIAL DISTRICTS							COMMERCIAL AND INDUSTRIAL DISTRICTS						
	RC	RR	R33	R20	R13	R7	RMF	NB	LB	GB	WCI	EO	IL	IG
	CATEGORY 12 – MOTOR VEHICLE / TRANSPORTATION													
1. Car Wash									S	S		S		
2. Automobile Fuel Dispensing Establishment/ Service Station (May include accessory convenience store and/or car wash)										S		S	S	
3. Auto Repair Garage										S			P	P
4. Auto Body Work & Painting										S		S	P	P
5. Auto or Light Truck Sales, Rental, Service (New or used vehicles sales) (Including Motorcycles or R.V.'s) a) Without Auto Body Work & Painting										S		S	P	P
b) With Body Work & Painting										S		S	P	P
6. Heavy Truck and Equipment Sales, Rental, Service										S			P	P
7. Farm Equipment Sales, Rental, Service										S			P	P
8. Manufactured Home Sales, Rental, Service										S			S	S
9. Boat Sales, Service, Rental, and Fuel Dispensing										P	P		S	
10. Marine Railway, Boat Building and Repair											P		P	P
11. Truck Stop													S	S
12. Truck Terminal													P	P
13. Heliport										S		S	S	S
14. Helipad										S		S	S	S
15. Airport												S	S	S
16. Bus or Rail Terminal										P		S	P	P
17. Taxi or Limousine Service										P			P	
18. Towing Service / Auto Storage or Impound Yard													S	S
18a. Recreational Vehicle Storage Facility										S			P	P
19. Automobile Graveyard, Junkyard														S
20. Bus Service/Repair Facility													P	P

(Ord. No. 09-22(R), 10/20/09; Ord. No. 10-24, 12/21/10; Ord. No. 14-12, 6/17/14)

USES	RESIDENTIAL DISTRICTS							COMMERCIAL AND INDUSTRIAL DISTRICTS						
	RC	RR	R33	R20	R13	R7	RMF	NB	LB	GB	WCI	EO	IL	IG
	CATEGORY 13 - SHOPPING CENTERS / BUSINESS PARKS													
1. Neighborhood Shopping Center								P	P	P		P		
2. Community or Regional Shopping Center										P		P		
3. Specialty Shopping Center									S	P		P		
4. Office Park									P	P		P	P	P
5. Industrial Park												P	P	P

(Ord. No. 14-12, 6/17/14)

See Section 24.1-481(a)(3) for special provisions applicable to shopping centers with 80,000 or more square feet of gross floor area.

P=PERMITTED USE S=PERMITTED BY SPECIAL USE PERMIT	RESIDENTIAL DISTRICTS							COMMERCIAL AND INDUSTRIAL DISTRICTS						
	RC	RR	R33	R20	R13	R7	RMF	NB	LB	GB	WCI	EO	IL	IG
	CATEGORY 14 - WHOLESALING / WAREHOUSING													
1. Wholesale Auction Establishment a) without outdoor storage/activity										P			P	P
b) with outdoor storage										S			P	P
2. Warehousing, Including Moving and Storage Establishment										S		S	P	P
3. Wholesale Trade Establishment (May include accessory retail sales) a) without outdoor storage										P		P	P	P
b) with outdoor storage										S		S	P	P
4. Seafood Receiving, Packing, Storage											P		S	P
5. Petroleum Products Bulk Storage/Retail Distribution													S	P
6. Mini-Storage Warehouses a. Single-story										S			P	P
b. Multi-story										S			P	P

(Ord. No. 11-15(R), 11/16/11; Ord. No. 14-12, 6/17/14)

P=PERMITTED USE S=PERMITTED BY SPECIAL USE PERMIT	RESIDENTIAL DISTRICTS							COMMERCIAL AND INDUSTRIAL DISTRICTS						
	RC	RR	R33	R20	R13	R7	RMF	NB	LB	GB	WCI	EO	IL	IG
	CATEGORY 15 - LIMITED INDUSTRIAL ACTIVITIES													
1. Laboratories, Research/Development Testing Facilities										S		P	P	P
2. Publishing, Printing, Other than general public and business/professional services										P		P	P	P
3. Computer and Technology Development and Assembly										P		P	P	P
4. Contractors' Shops (e.g., Plumbing, Electrical, Mechanical, HVAC, Home Improvement or Construction, Swimming Pool, Landscaping, Cabinetmaking, General Building, Excavating, etc.) a) With Enclosed Storage of Equipment or Materials										P			P	P
b) With Outdoor/Exposed Storage										S			P	P
5. Laundry, Dry Cleaning Plant (institutional)													P	P
6. Stone Monument Sales, Processing													S	P
7. Manufacture or Assembly of Electronic Instruments, Components, Devices										S	S	P	P	P
8. Machine Shops & Fabricators										S	S		P	P
9. Manufacture or Assembly of Medical, Drafting, Metering, Marine, Photographic, Mechanical Instruments												P	P	P
10. Ice Manufacturing and Storage													P	P
11. Microbreweries, micro-distilleries, micro-Wineries, micro-cideries										P		P	P	P
12. Sales, Distribution, and Installation of Glass, Including Windows, Mirrors, and/or Automobile Glass										S	P		P	P
13. Recycling Center										S	S		P	P
14. Recycling Plant													S	P

(Ord. No. 14-12, 6/17/14; Ord. No. 14-27, 12/16/14)

CODE OF THE COUNTY OF YORK, VIRGINIA

CHAPTER 24.1

USES <small>P=PERMITTED USE S=PERMITTED BY SPECIAL USE PERMIT</small>	RESIDENTIAL DISTRICTS							COMMERCIAL AND INDUSTRIAL DISTRICTS						
	RC	RR	R33	R20	R13	R7	RMF	NB	LB	GB	WCI	EO	IL	IG
	CATEGORY 16 - GENERAL INDUSTRIAL													
1. Manufacture & Assembly of Tools, Firearms, Hardware, HVAC Equipment												S	P	P
2. Manufacture & Assembly of Musical Instruments, Toys, Novelties												S	P	P
3. Manufacture, Compounding, Processing, Packaging of Cosmetics, Toiletries, Pharmaceuticals												S	P	P
4. Manufacture, Compounding, Assembly of Products Made From Previously Prepared Paper, Plastic, Metal, Textiles, Tobacco, Wood, Paint, Fiber, Glass, Rubber, Leather, Cellophane, Canvas, Fur, Felt, Horn, Wax, Hair, Yarn												S	P	P
5. Manufacture of Pottery and Ceramic Products												S	P	P
6. Manufacture, Compounding, Processing & Packaging of Food and Food Products												S	P	P
7. Concrete or Asphalt Mixing, Batching Plant														S
8. Distillation of Varnish, Turpentine														S
9. Fertilizer Manufacturing														S
10. Fireworks, Explosives Manufacturing, Storage														S
11. Fish Canning, Curing, Grinding, Smoking											S			S
12. Glue, Size Manufacturing														S
13. Iron, Steel, Copper, Metal Works & Foundries														S
14. Lime, Cement, Gypsum, Plaster Manufacturing														S
15. Petroleum Products, Alcohol Refining, Manufacturing, Mixing, Storage														S
16. Soap Manufacturing														S
17. Tanning/Curing Hides														S
18. Slaughterhouse, Rendering Plant														S
19. Chemical Manufacturing													S	S
20. Paint, Shellac Manufacturing													S	S
21. Extractive Industries, Surface Mines, Borrow Pits														S
21.1. Soil Stockpiling	S	A	S	S	S	S	S	A	A	A	A	A	A	A
22. Sawmill/Firewood splitting/sales lot													S	S
23. Construction Trailer Storage Yards													S	S
24. Reclamation of Non-Conforming Borrow Pits	P	P	P	P	P	P	P	P	P	P	P	P	P	P
25. Meat & Poultry Packing, Curing, Canning, Smoking														S

(Ord. No. 14-12, 6/17/14)

USES	RESIDENTIAL DISTRICTS							COMMERCIAL AND INDUSTRIAL DISTRICTS						
	RC	RR	R33	R20	R13	R7	RMF	NB	LB	GB	WCI	EO	IL	IG
	CATEGORY 17 - UTILITIES													
1. Electric Substations, Distribution Center, Transformer Stations, Telephone Exchanges	S	S	S	S	S	S	S	A	A	A	S	S	A	P
2. Electric Generating Plants														S
2b. Solar Energy Facilities	S	S									S	S	P	P
3. Sewage Pump/Lift Stations	P	P	P	P	P	P	P	P	P	P	P	P	P	P
4. Sewage Treatment/Disposal Facilities	S	S											S	S
5. Water Purification Facilities	S	S											S	P
6. Water Storage Towers	S	S	S	S	S	S	S	S	S	S	S	S	S	P
7. Radio, Television, Microwave Facilities	S	S								S	S	S	P	P
8. Utility Transmission Facilities other than Normal Distribution Facilities (Essential Services): Including Telephone Exchanges, Pipelines, High Voltage Power Lines	S	S	S	S	S	S	S	S	S	S	S	S	S	S
9. Solid Waste Disposal and Treatment Facilities including Incinerators, Landfills, Transfer Stations														S
10. Storage, Handling, Transport of Coal or Other Solid Fossil Fuels used in the County; Storage, Handling, Transport, Disposal of Fly Ash, Bottom Ash														S

(Ord. No. O98-18, 10/7/98; Ord. No. O99-17, 12/1/99; Ord. No. 00-12, 7/18/00; Ord. No. 00-15, 8/15/00; Ord. No. 00-22, 12/19/00; Ord. No. 03-25, 6/17/03; Ord. No. 04-2(R), 3/2/04; Ord. No. 05-13(R), 5/17/05; Ord. No. 06-19(R), 7/18/06; Ord. No. 08-17(R), 3/17/09; Ord. No. 10-18(R-1), 1/18/11; Ord. No. 14-12, 6/17/14; Ord. No. 17-8, 8/15/17)

Sec. 24.1-307. Prohibited uses.

The following uses shall be prohibited in the county:

- (a) Smelting;
- (b) Nuclear materials manufacturing;
- (c) Nuclear waste processing or disposal;
- (d) Biohazard waste processing or disposal; and
- (e) Manufacture, transformation, or distribution of biologically accumulative poisons or other poisons that are or ever were registered in accordance with the provisions of the Federal Insecticide, Fungicide, and Rodenticide Act (7 USC 135, et sec.).
- (f) ATV (All Terrain Vehicle) tracks, cross-country circuits or other facilities de-signed or used for operation of such vehicles by other than the property owner/occupant as an activity accessory to their residential use of a property.
- (g) Placement of trailers or containerized cargo units on any property for storage or other uses, except as specifically authorized by the terms of this chapter.

(Ord. No. 05-13(R), 5/17/05; Ord. No. 08-17(R), 3/17/09)

Secs. 24.1-308—24.1-319. Reserved

DIVISION 2. RESIDENTIAL DISTRICTS

AGENCY DISCLOSURE

In a real estate transaction, when the Agent represents the:

Seller/Landlord:

then an Agent under a listing agreement with a seller acts as the agent for the seller. The listing company and all of its broker/agents, and the selling company and all of its agents as subagents of the seller, would owe their fiduciary duties to the seller. The broker and broker's agents may still provide buyer/tenants, as customers, with information about properties and available financing, may show them properties, and may assist them in preparing an offer to purchase, option or lease a particular property.

Buyer/Tenant:

then an Agent under a contract with a buyer acts as the agent for that buyer only, as a "Buyer/Broker/Agent," and the Agent is not the seller's agent, even if the Purchase Contract provides that the Seller or the Listing Broker will pay the Agent for the services rendered to the buyer/tenant. An Agent acting as the buyer's/tenant's agent must disclaim sub agency if offered and must disclose the Buyer/Tenant Broker/Agent relationship when dealing with the seller's/landlord's Agent or the Seller/Landlord. The Buyer/Tenant Broker/Agent owes its fiduciary duties to the buyer/tenant.

Buyer and Seller (Acting as a Dual Agent):

then an Agent, either acting directly or through one or more of the brokerage firm's other Agents, may be the Agent of both the buyer and the seller, but only if the scope of the agency is limited by a written agreement and only with the express knowledge and written consent of both the buyer and the seller. An Agent representing both the buyer and the seller must disclose all information regarding the agency relationship, including the limitation on the Agent's ability to represent either party fully and exclusively. The Agent must not disclose to either party, without the prior consent of the party adversely affected by the disclosure, any information obtained within the confidentiality and trust of the fiduciary relationship. As an example, the Agent must not tell the buyer that the seller will accept a price lower than the listing price, nor tell the seller that the buyer will pay a price offered, without the prior consent of the party adversely affected by the disclosure.

Campana Waltz Commercial Real Estate, LLC is the _____ Listing Broker, _____ Buyer Broker, _____ Dual Agent for the property submitted in this information package.

Acknowledged by:

Campana Waltz Commercial Real Estate, LLC