

# OFFICE AVAILABLE

801 S HAM LANE | LODI, CA

UP TO:  
**±3,467 RSF**

 **TRANSWESTERN**<sup>®</sup>

**Ben Rishwain**

**925.357.2015**

[ben.rishwain@transwestern.com](mailto:ben.rishwain@transwestern.com)

LIC: 01729449

 **LEE &  
ASSOCIATES**  
COMMERCIAL REAL ESTATE SERVICES

**Wendy Coddington**

**209.983.6830**

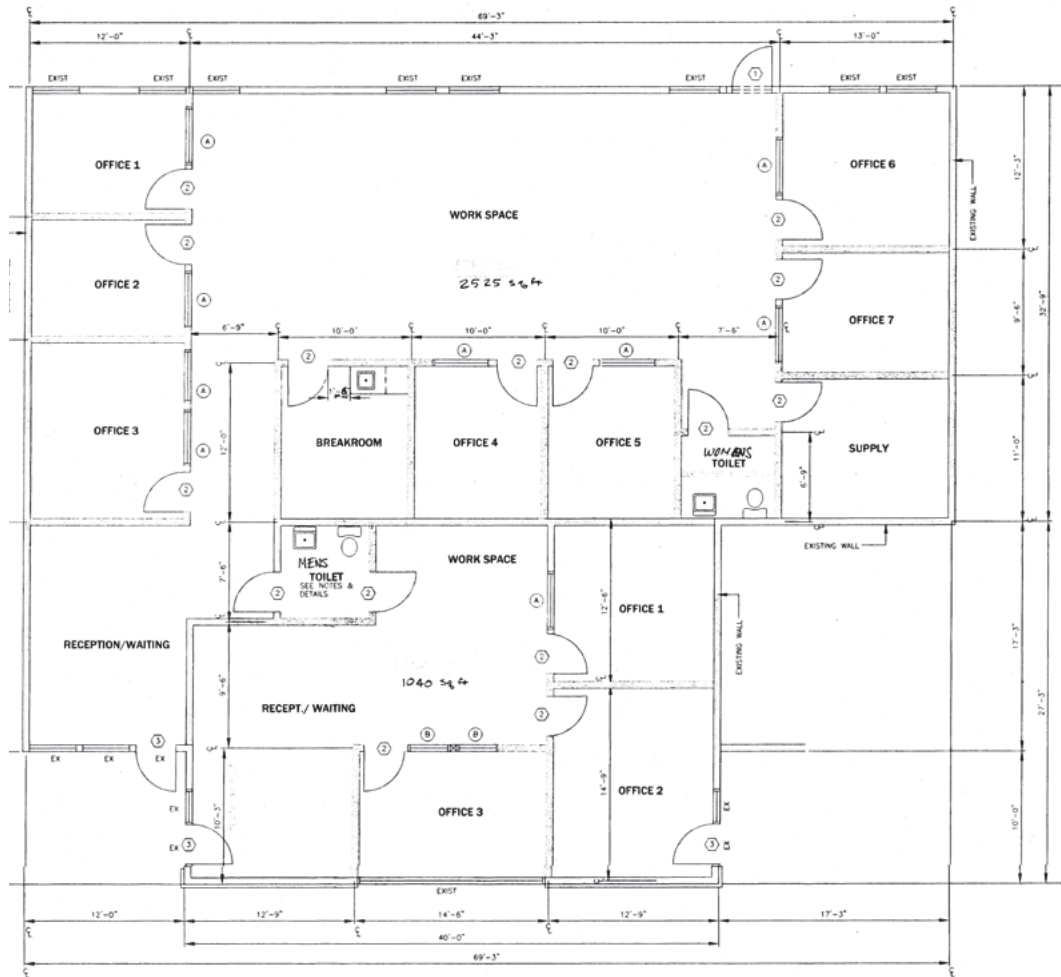
[wendy.coddington@lee-associates.com](mailto:wendy.coddington@lee-associates.com)

LIC: 00593566

**SUMMIT FUNDING, INC.**  
Real Estate Loans



# 801 S HAM LANE | AVAILABLE



## HIGHLIGHTS



Both for Sale and for Lease



Minimum Available: ±1,573 SF  
Maximum Available: ±3,467 SF



1 block from Adventist Health Lodi Memorial Hospital



Situated on ±2.94 acres, with plenty of onsite and street parking available



Located in the central business core of Lodi



0.6 miles from Hwy 12



**Ben Rishwain**

**925.357.2015**

ben.rishwain@transwestern.com

LIC: 01729449



**Wendy Coddington**

**209.983.6830**

wendy.coddington@lee-associates.com

LIC: 00593566

