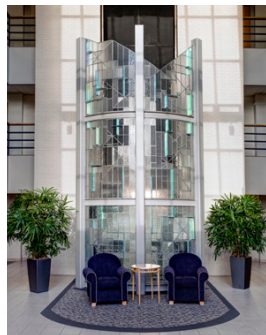
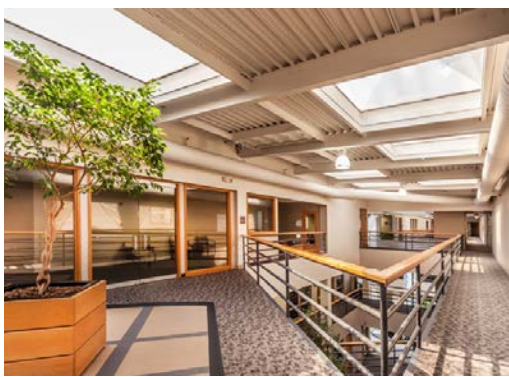
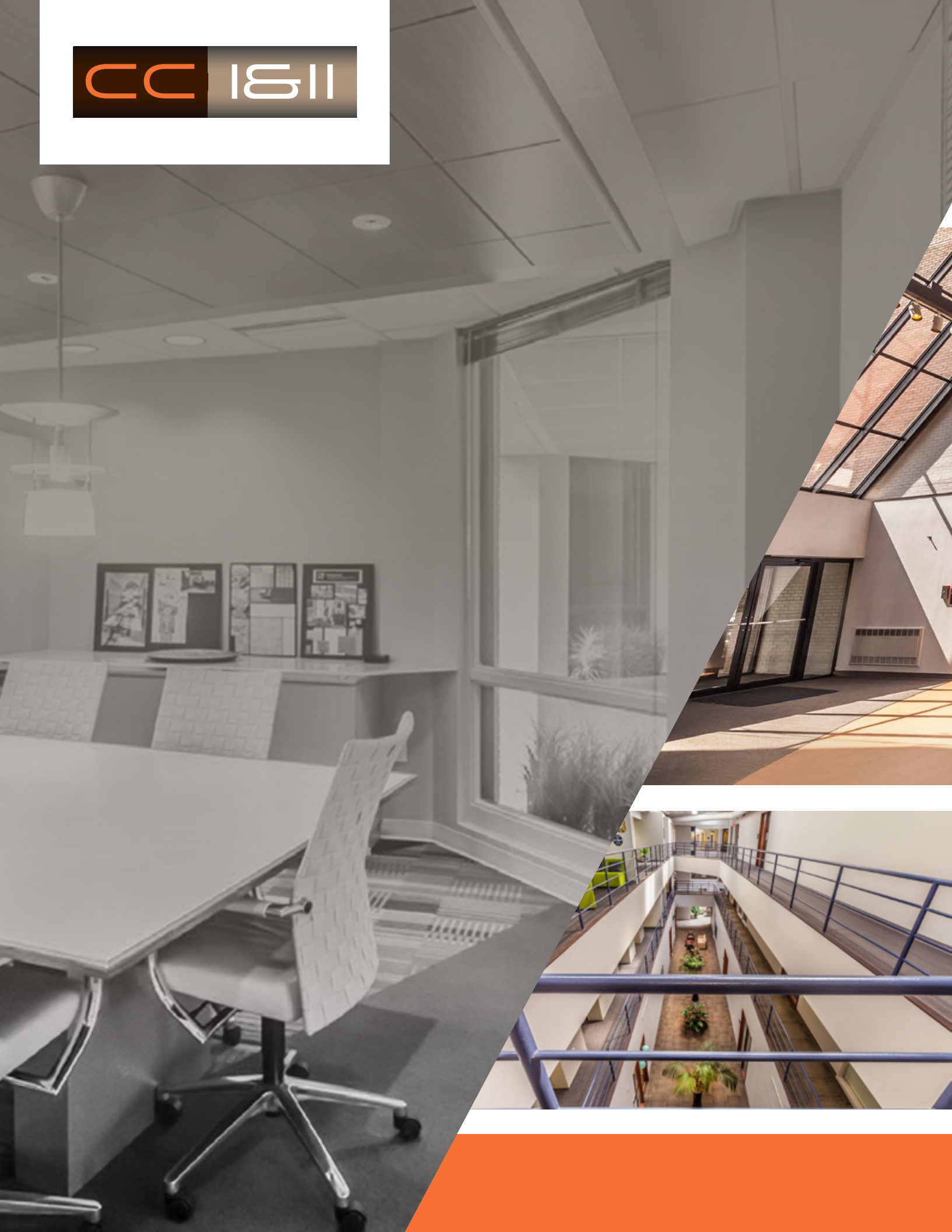


8604 & 8606 Allisonville Road Indianapolis, IN



Office Space For Lease







## PROPERTY HIGHLIGHTS

- » 130,726 Total Rentable Square Feet
- » Two, Three-Story Buildings
- » 40 Seat Building Conference Room
- » 4.5/1,000 Parking Ratio
- » Immediate Access to I-465
- » 541 - 5,201 SF Available
- » \$18.50/SF Full Service

## AREA DEMOGRAPHICS

Within a 5 mile radius

- » Population: 171,598
- » Median Household Income: \$99,231
- » Number of Households: 79,263
- » Total Number of Businesses: 12,737

# CLOSE TO IT ALL



11 minute drive to Downtown Carmel

23 minute drive to Downtown Indy

7 minute drive to Keystone at the Crossing



## LEASING CONTACTS

**Bennett Williams**  
 Director  
 +1 317 639 0442  
 bennett.williams@cushwake.com

**Megan Cuvelier**  
 Senior Associate  
 +1 317 352 5422  
 megan.cuvelier@cushwake.com

**Mitch Ostrowski**  
 Associate  
 +1 317 639 0487  
 mitch.ostrowski@cushwake.com

One American Square, Suite 1800 Indianapolis, IN 46282 | Main: +1 317 634 6363  
[cushmanwakefield.com](http://cushmanwakefield.com)

Cushman & Wakefield Copyright 2019. No warranty or representation, express or implied, is made to the accuracy or completeness of the information contained herein, and same is submitted subject to errors, omissions, change of price, rental or other conditions, withdrawal without notice, and to any special listing conditions imposed by the property owner(s). As applicable, we make no representation as to the condition of the property (or properties) in question.

