



**HOKANSON
COMPANIES INC.**
INVESTMENT & CORPORATE REAL ESTATE

FOR LEASE

WATERPLACE PARK
8935 N. MERIDIAN STREET, INDIANAPOLIS, IN 46260



Property Highlights

- Rare Availability
- Prominent North Meridian address with excellent access to I-465.
- New ownership and recent improvements to the property.
- Flexible floor plan to meet tenant requirements.
- Suite 107: 1,230 SF and Suite 114: 873 SF on the 1st Floor



FOR MORE INFORMATION

Stephen J. Adams
Vice President, Leasing & Brokerage
(317) 633-8063
sja@hokansoninc.com

Hokanson Companies, Inc.
10201 N. Illinois Street, Suite 400
Indianapolis, Indiana 46290
www.hokansoninc.com





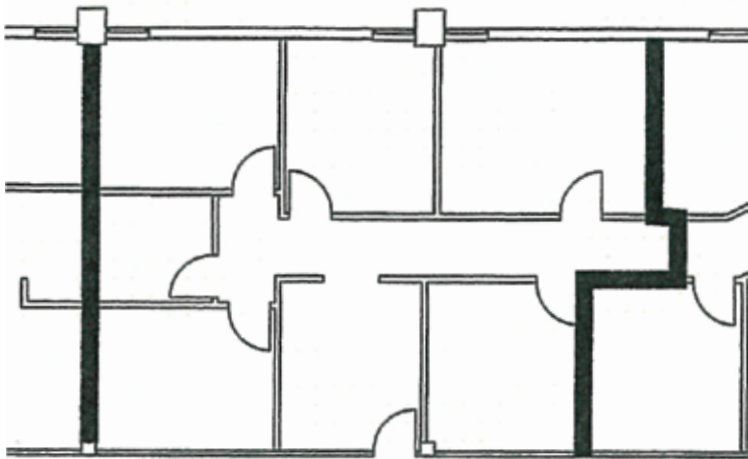
**HOKANSON
COMPANIES INC.**
INVESTMENT & CORPORATE REAL ESTATE

FOR LEASE

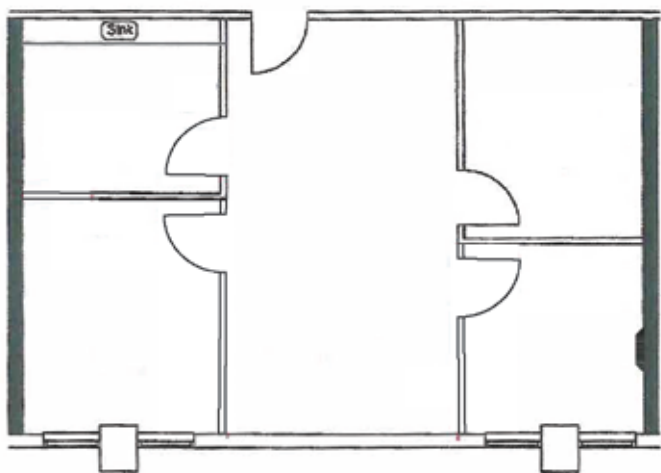
WATERPLACE PARK
8935 N. MERIDIAN STREET, INDIANAPOLIS, IN 46260



Suite 107 - 1,230 SF



Suite 114 - 873 SF



FOR MORE INFORMATION

Stephen J. Adams
Vice President, Leasing & Brokerage
(317) 633-8063
sja@hokansoninc.com

Hokanson Companies, Inc.
10201 N. Illinois Street, Suite 400
Indianapolis, Indiana 46290
www.hokansoninc.com

