

FOR LEASE

29,235 SF

150 NORTHWEST POINT
ELK GROVE VILLAGE, ILLINOIS



www.cbre.com

CBRE

FOR LEASE
29,235 SF

150 NORTHWEST POINT
Elk Grove Village, Illinois



SPACE AVAILABILITY

+ **4TH FLOOR** – 29,235 rsf | Space is owner-occupied and available upon request, or TBD



SPACE HIGHLIGHTS

- + Occupancy negotiable
- + Located in Northwest Point Office Park
- + Immediate tollway access
- + 10 minutes to O'Hare International Airport
- + Lease ready space with Class A finishes
- + Aramark operated deli/cafeteria
- + Convenience store
- + Covered parking
- + Great access to area amenities and adjacent Sheraton Suites Hotel
- + 24/7 security
- + Furniture available
- + Shared conference center



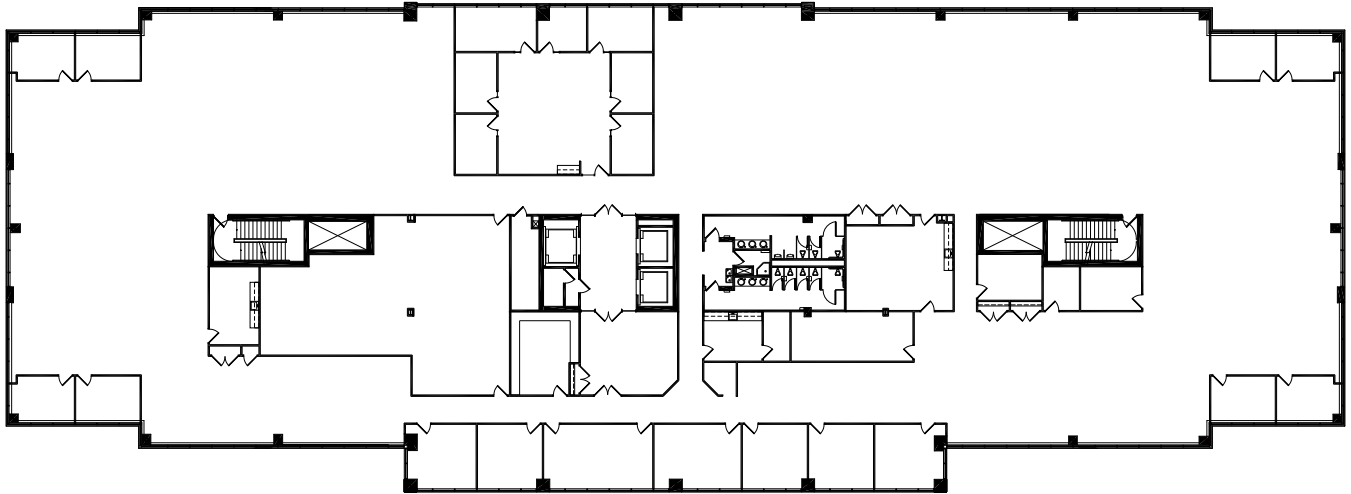
FOR LEASE
29,235 SF

150 NORTHWEST POINT
Elk Grove Village, Illinois



FLOOR PLAN

FOURTH FLOOR



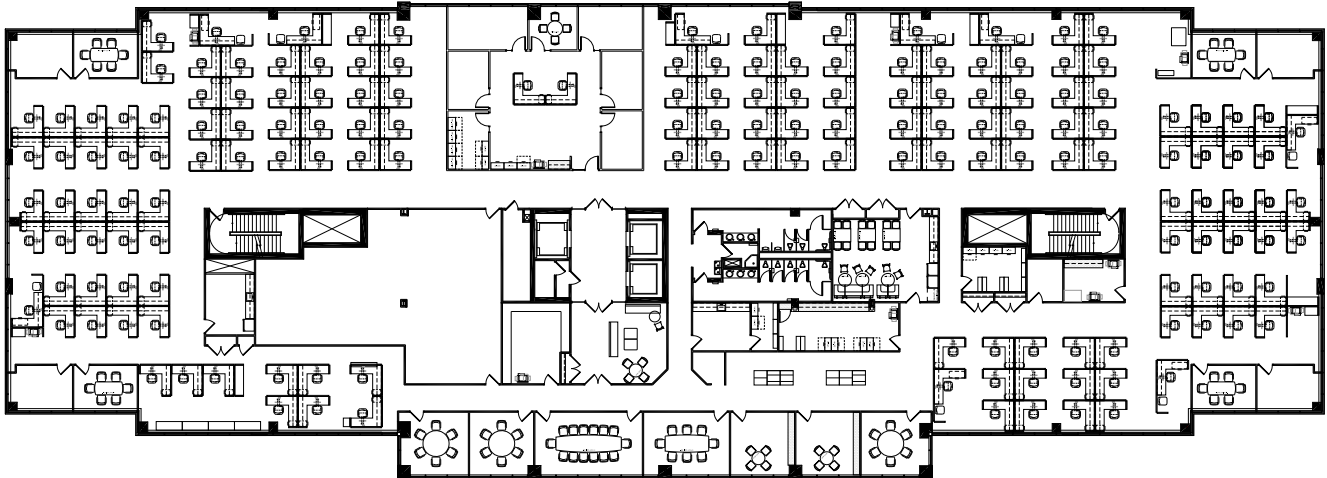
FOR LEASE
29,235 SF

150 NORTHWEST POINT
Elk Grove Village, Illinois



FURNISHED PLAN

FOURTH FLOOR



CONTACT US

DAN GRAHAM

Senior Vice President
+1 847 706 4032
dan.graham@cbre.com

MARK C SMITH

Senior Vice President
+1 847 706 4916
mark.smith@cbre.com

© 2017 CBRE, Inc. The information contained in this document has been obtained from sources believed reliable. While CBRE, Inc. does not doubt its accuracy, CBRE, Inc. has not verified it and makes no guarantee, warranty or representation about it. It is your responsibility to independently confirm its accuracy and completeness. Any projections, opinions, assumptions or estimates used are for example only and do not represent the current or future performance of the property. The value of this transaction to you depends on tax and other factors which should be evaluated by your tax, financial and legal advisors. You and your advisors should conduct a careful, independent investigation of the property to determine to your satisfaction the suitability of the property for your needs.

Photos herein are the property of their respective owners and use of these images without the express written consent of the owner is prohibited.

www.cbre.com

CBRE