

Publix #1140 - Middle Beach Commons

408 Beach Boulevard
Jacksonville Beach, FL 32250
Lat 30.287, Long -81.393

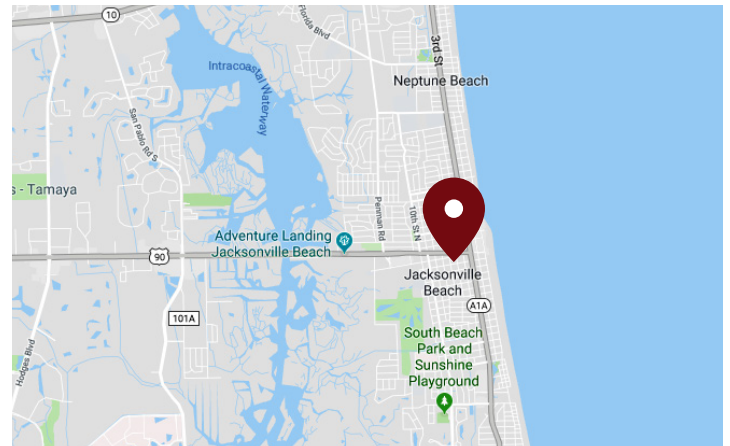
FOR LEASE



1,003 SF AVAILABLE

PROPERTY HIGHLIGHTS

- Jacksonville MSA
- Publix-Anchored Shopping Center
- Nearest Retail Center to the Beach on Beach Boulevard
- Direct Entry from US-90/Beach Boulevard
- Combined Traffic Counts: 56,400 VPD



DEMOGRAPHICS	1 Mile	3 Miles	5 Miles
Total Population	10,886	43,789	107,508
Daytime Population	12,068	46,223	110,660
Total Households	5,023	20,307	46,512
Avg. HH Income	\$96,574	\$115,363	\$115,650

Data provided by Placer Labs Inc. (www.placer.ai) & Esri

Tyler Wilkins

407.581.6245 | twilkins@crossmanco.com

3333 South Orange Avenue, Suite 201, Orlando, FL

Licensed Real Estate Broker. No warranty expressed or implied has been made to the accuracy of the information provided herein, no liability assumed for error or omission.



www.crossmanco.com

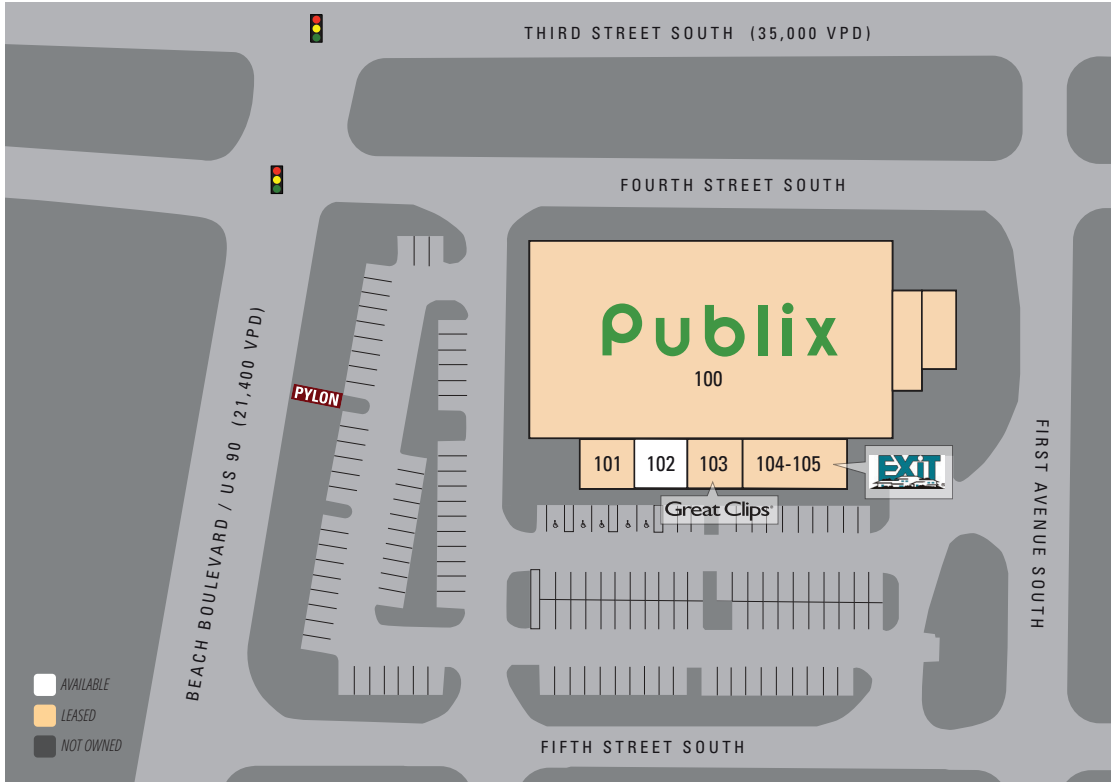
Publix #1140 - Middle Beach Commons

408 Beach Boulevard
 Jacksonville Beach, FL 32250
 Lat 30.287, Long -81.393

SITE PLAN

Suite	Tenant	Size
100	Publix	28,800
101	Ken & Kim Nails	1,003
102	AVAILABLE	1,003
103	Great Clips	1,003
104-105	Exit Realty Estate Gallery	1,879

TOTAL 33,688



Tyler Wilkins

407.581.6245 | twilkins@crossmanco.com

3333 South Orange Avenue, Suite 201, Orlando, FL

Licensed Real Estate Broker. No warranty expressed or implied has been made to the accuracy of the information provided herein, no liability assumed for error or omission.



Crossman & Company

www.crossmanco.com

Publix #1140 - Middle Beach Commons

408 Beach Boulevard
Jacksonville Beach, FL 32250
Lat 30.287, Long -81.393

FOOT TRAFFIC OVERVIEW

EST. # OF CUSTOMERS ANNUALLY



EST. # OF VISITS ANNUALLY



AVG. VISITS / CUSTOMER



AVG. LENGTH-OF-STAY / VISIT



TOP 3 DAYS



Saturday	70,686
Sunday	68,806
Monday	60,680

OF VISITS

TOP 3 HOURS

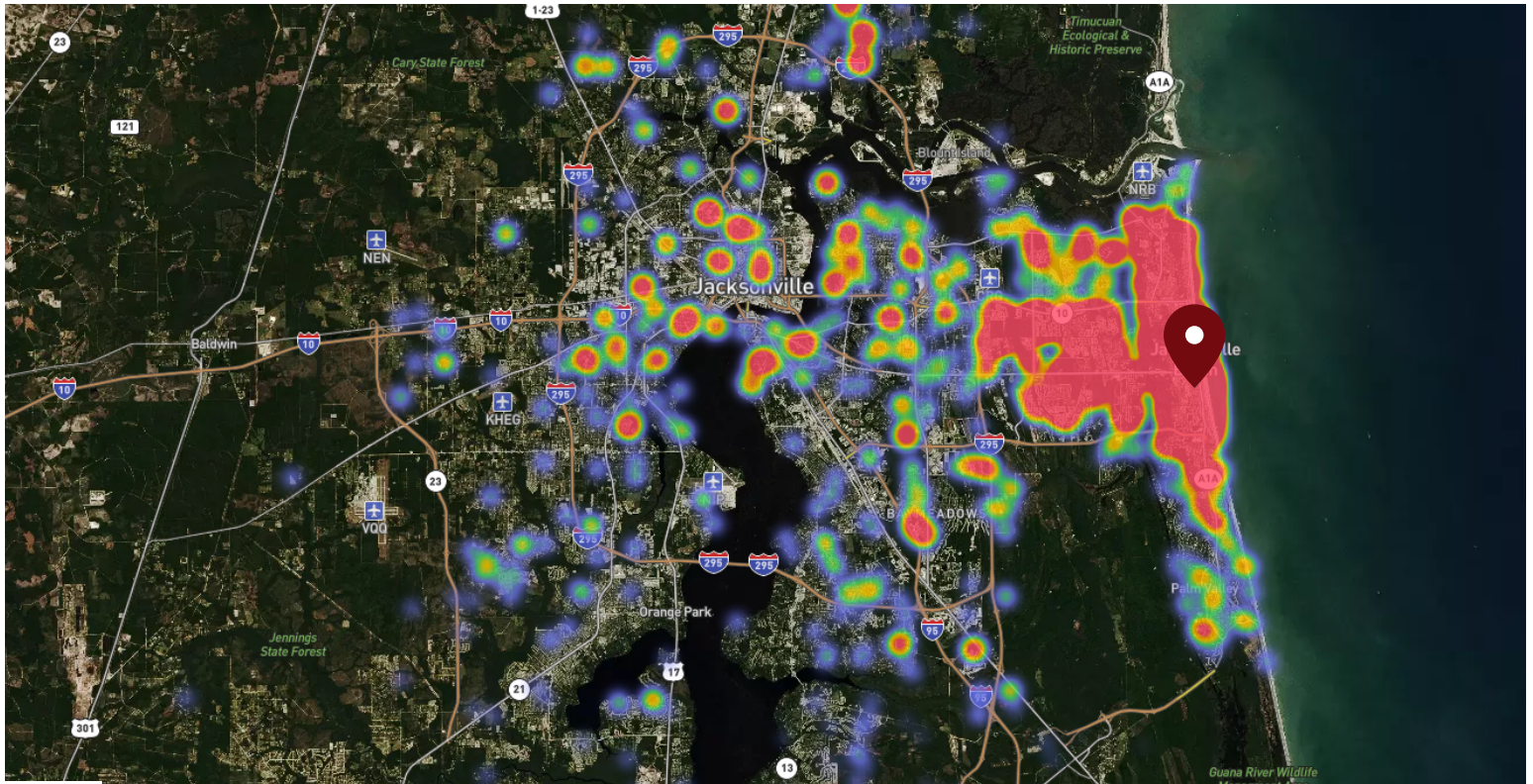


12-1 PM	75,678
1-2 PM	69,413
2-3 PM	66,270

OF VISITS

Data provided by Placer Labs Inc. (www.placer.ai) Dec 1, 2019 - Nov 30, 2020

SITE VISIT DENSITY



Red, orange, and yellow colors represent the location of 60% of site visitors

Data provided by Placer Labs Inc. (www.placer.ai)

Tyler Wilkins

407.581.6245 | twilkins@crossmanco.com

3333 South Orange Avenue, Suite 201, Orlando, FL

Licensed Real Estate Broker. No warranty expressed or implied has been made to the accuracy of the information provided herein, no liability assumed for error or omission.



Crossman & Company

www.crossmanco.com