

PAINE FIELD

BUSINESS PARK

2615 WEST CASINO ROAD
EVERETT, WASHINGTON 98204

SUITE 6E

AVAILABLE 6/1/2024

POTENTIALLY AVAILABLE SOONER

TOTAL SF: 1,547 RSF

OFFICE SF: 128 RSF

WAREHOUSE SF: 1,401 RSF

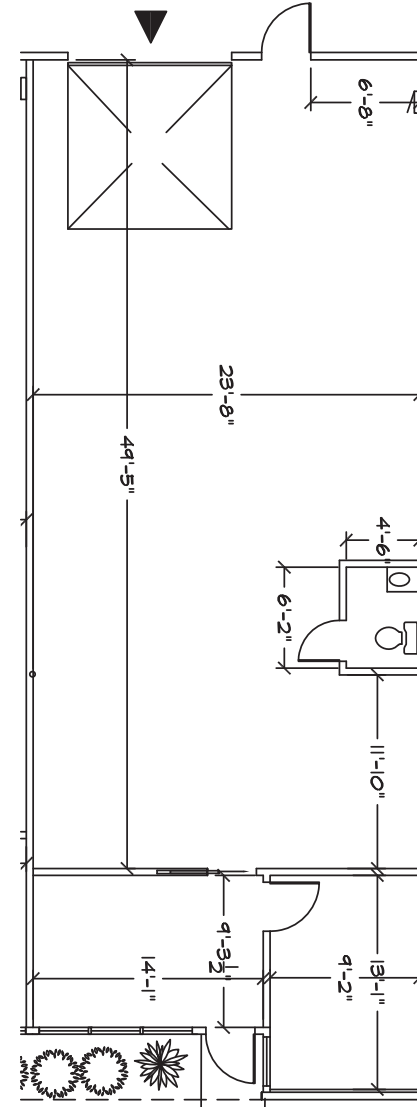
BASE RENT: \$2,166

NNN: \$535

GROSS RENT: \$2,701

The information contained herein has been given to us by the owner or sources that we deem reliable. We have no reason to doubt its accuracy, but we do not guarantee it. Prospective tenants should carefully verify all information contained herein.

[↑ BACK TO AVAILABLE SPACE](#)



BRODERICK
GROUP

CONNOR GILCHRIST
425.274.4286
gilchrist@broderickgroup.com

RAWLEY HOLMBERG
425.274.4284
holmberg@broderickgroup.com

OWNED AND MANAGED BY:

Schnitzer
PROPERTIES