

Retail / Medical Space Available With Storefront Signage

6007-6009 Whittier Blvd., Los Angeles, CA 90022

AVAILABLE
±1,700-3,400 SF



DRAGANA BOZILOVIC (818) 697-9382

dragana@illicre.com · DRE#01958060

TODD NATHANSON (818) 514-2204

todd@illicre.com · DRE#00923779

5990 Sepulveda Blvd., Ste. 600 · Sherman Oaks, CA 91411 · 818.501.2212/Phone · 818.501.2202/Fax · www.illicre.com · DRE #01834124

This information has been secured from sources we believe to be reliable, but we make no representations or warranties, expressed or implied, as to the accuracy of the information. References to square footage are approximate. References to neighboring retailers are subject to change, and may not be adjacent to the vacancy being marketed either prior to, during, or after leases are signed. Lessee must verify the information and bears all risk for any inaccuracies.

FOLLOW US



Retail / Medical Space Available With Storefront Signage

6007-6009 Whittier Blvd., Los Angeles, CA 90022

PROPERTY FEATURES

- ±1,700-3,400 SF available
- Unit 6007 is fully built out as medical
- Located on busy Whittier Blvd.
- Shared parking in the back of building
- Storefront signage available
- Approx. 26,144 cars per day on Whittier Blvd. & approx. 35,316 cars on Atlantic Blvd.

AREA AMENITIES

- Centrally located to dense residential block
- Easily accessible from Interstate 5 Freeway
- Close proximity to major retail centers like Citadel Outlets and Commerce Center, which contains national tenants such as Target, Rent-A-Center, El Super #3, Ross Dress for Less., dd's Discounts, It's Boba Time, Regency Commerce Theaters, Disney, Nike, and Under Armour



DEMOS	1 MILE	3 MILE	5 MILE
Population	35,489	203,905	710,851
Avg. HH Income	\$71,376	\$76,984	\$76,063
Daytime Pop	28,195	163,269	569,372
Traffic Count	± 26,144 cars per day on Whittier Blvd.		



DRAGANA BOZILOVIC (818) 697-9382

dragana@illicre.com · DRE#01958060

5990 Sepulveda Blvd., Ste. 600 · Sherman Oaks, CA 91411 · 818.501.2212/Phone · 818.501.2202/Fax · www.illicre.com · DRE #01834124

TODD NATHANSON (818) 514-2204

todd@illicre.com · DRE#00923779

FOLLOW US



This information has been secured from sources we believe to be reliable, but we make no representations or warranties, expressed or implied, as to the accuracy of the information. References to square footage are approximate. References to neighboring retailers are subject to change, and may not be adjacent to the vacancy being marketed either prior to, during, or after leases are signed. Lessee must verify the information and bears all risk for any inaccuracies.

Retail / Medical Space Available With Storefront Signage

6007-6009 Whittier Blvd., Los Angeles, CA 90022

Unit 6007 | ±1,700-3400 SF
FULLY BUILT OUT MEDICAL | IN-LINE

- Combinable with unit 6009 for ±3,400 SF
- 4 exam rooms
- 2 private offices
- 2 lab rooms
- Private restroom



DRAGANA BOZILOVIC (818) 697-9382

dragana@illicre.com · DRE#01958060

TODD NATHANSON (818) 514-2204

todd@illicre.com · DRE#00923779

5990 Sepulveda Blvd., Ste. 600 · Sherman Oaks, CA 91411 · 818.501.2212/Phone · 818.501.2202/Fax · www.illicre.com · DRE #01834124

This information has been secured from sources we believe to be reliable, but we make no representations or warranties, expressed or implied, as to the accuracy of the information. References to square footage are approximate. References to neighboring retailers are subject to change, and may not be adjacent to the vacancy being marketed either prior to, during, or after leases are signed. Lessee must verify the information and bears all risk for any inaccuracies.

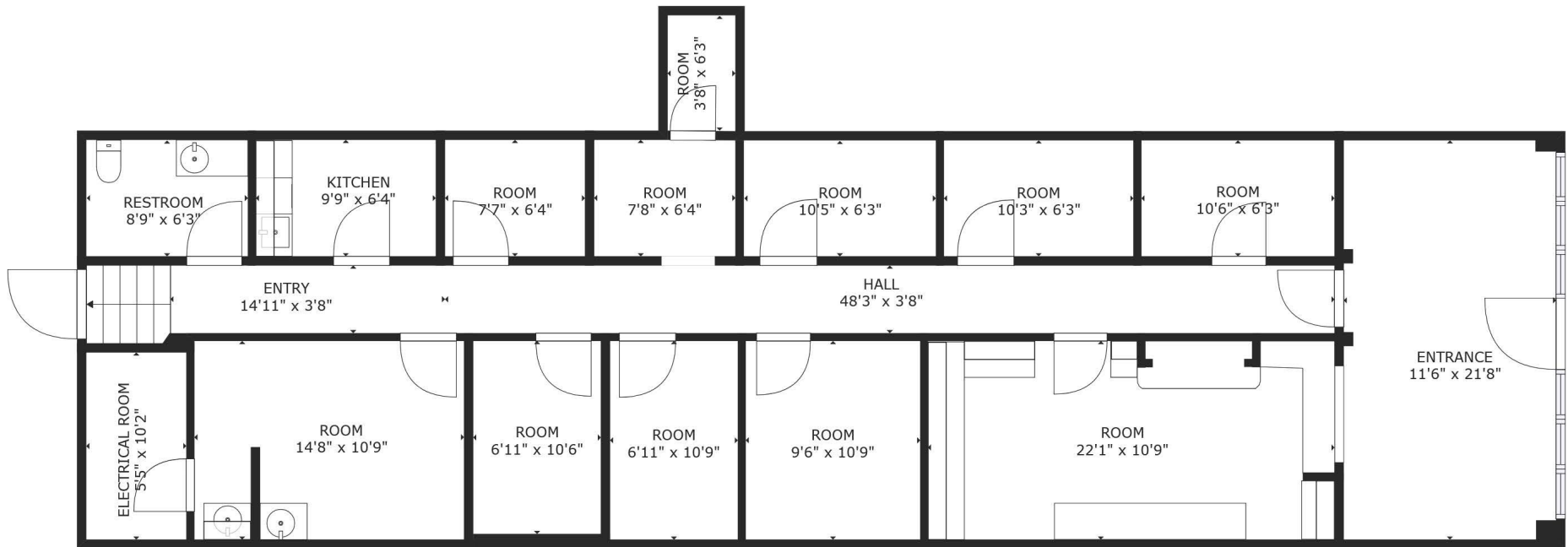
FOLLOW US



Retail / Medical Space Available With Storefront Signage

6007-6009 Whittier Blvd., Los Angeles, CA 90022

UNIT 6007 - FLOOR PLAN



FLOOR 1



DRAGANA BOZILOVIC (818) 697-9382

dragana@illicre.com · DRE#01958060

TODD NATHANSON (818) 514-2204

todd@illicre.com · DRE#00923779

5990 Sepulveda Blvd., Ste. 600 · Sherman Oaks, CA 91411 · 818.501.2212/Phone · 818.501.2202/Fax · www.illicre.com · DRE #01834124

This information has been secured from sources we believe to be reliable, but we make no representations or warranties, expressed or implied, as to the accuracy of the information. References to square footage are approximate. References to neighboring retailers are subject to change, and may not be adjacent to the vacancy being marketed either prior to, during, or after leases are signed. Lessee must verify the information and bears all risk for any inaccuracies.

FOLLOW US



Retail / Medical Space Available With Storefront Signage

6007-6009 Whittier Blvd., Los Angeles, CA 90022



DRAGANA BOZILOVIC (818) 697-9382

dragana@illicre.com · DRE#01958060

TODD NATHANSON (818) 514-2204

todd@illicre.com · DRE#00923779

5990 Sepulveda Blvd., Ste. 600 · Sherman Oaks, CA 91411 · 818.501.2212/Phone · 818.501.2202/Fax · www.illicre.com · DRE #01834124

This information has been secured from sources we believe to be reliable, but we make no representations or warranties, expressed or implied, as to the accuracy of the information. References to square footage are approximate. References to neighboring retailers are subject to change, and may not be adjacent to the vacancy being marketed either prior to, during, or after leases are signed. Lessee must verify the information and bears all risk for any inaccuracies.

FOLLOW US

