

SUITE 204

3,114 RSF | AVAILABLE NOW



GREAT NATURAL LIGHT



EFFICIENT LAYOUT



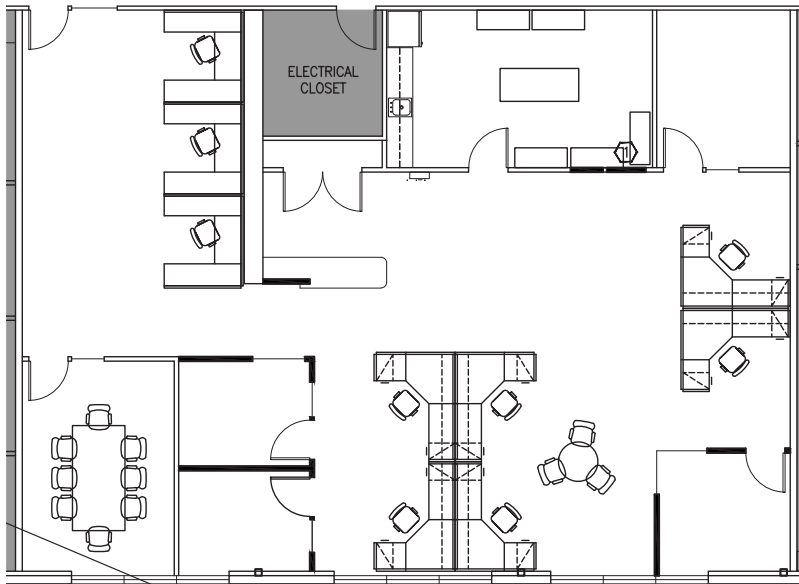
VIEWS OF WATER AND SHIPYARD



SEPARATELY METERED ELECTRIC



EXTERIOR SIGNAGE AVAILABLE



WATERFRONT PROPERTY LOCATED ON THE SHIP CANAL ONE BLOCK FROM THE BURKE GILMAN TRAIL.



CLOSE TO NUMEROUS RETAIL, FOOD AND BEVERAGE OFFERINGS IN FREMONT AND BALLARD.



SECURE BIKE STORAGE ONSITE AND FREE DESIGNATED ONSITE PARKING IN SECURED LOT (1/1,000 RATIO) WITH ADDITIONAL FREE STREET PARKING NEIGHBORING THE PROJECT.

LEAH MASSON

+1 206 292 6080

LEAH.MASSON@CBRE.COM

© 2020 CBRE, Inc. All rights reserved. This information has been obtained from sources believed reliable, but has not been verified for accuracy or completeness. You should conduct a careful, independent investigation of the property and verify all information. Any reliance on this information is solely at your own risk. CBRE and the CBRE logo are service marks of CBRE, Inc. All other marks displayed on this document are the property of their respective owners, and the use of such logos does not imply any affiliation with or endorsement of CBRE. Photos herein are the property of their respective owners. Use of these images without the express written consent of the owner is prohibited.PMSstudio_December2020

CBRE