

Sky River Medical Center

14841 179th Avenue SE
Monroe, WA

Features

Suite 302 - 3,354 SF

\$24.00 / SF, NNN

Class A medical building
located adjacent to
EvergreenHealth Monroe
(formerly Valley General Hospital)

Ample parking and convenient
patient drop-off

Fully improved medical space
ready for immediate occupancy



Location



Contact

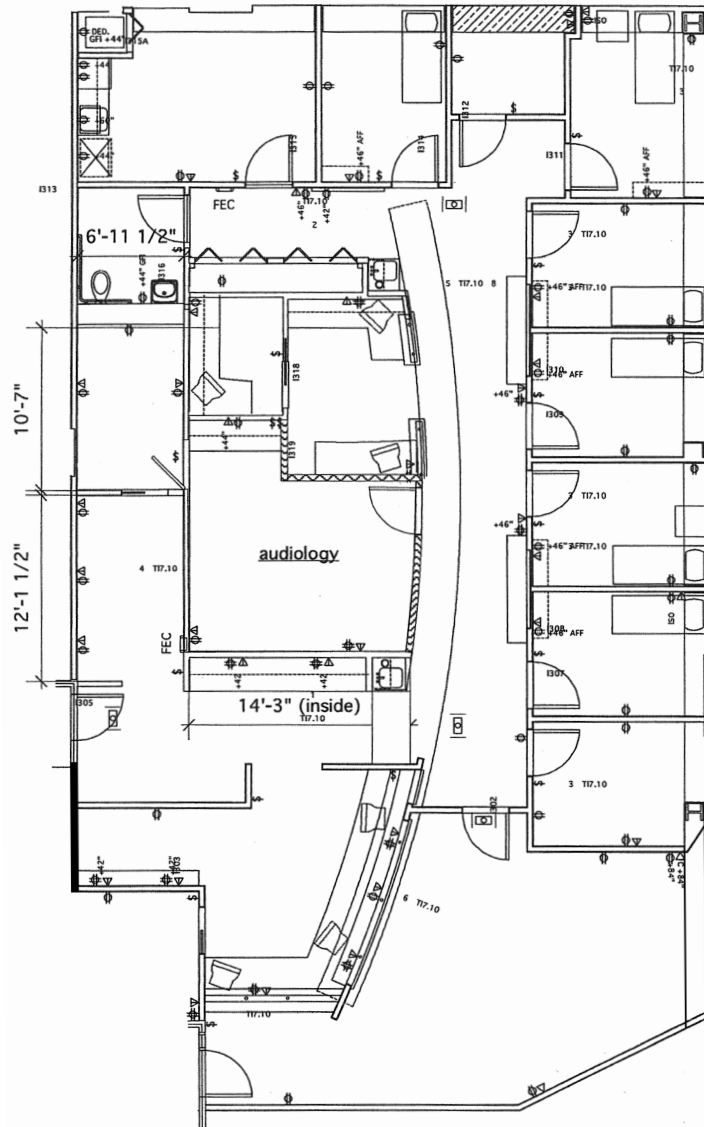
Keith Honsberger

425.450.1107

keithh@kiddermathews.com

Sky River Medical Center

Suite 302 - 3,354 SF



Contact

Keith Honsberger

425.450.1107

keithh@kiddermathews.com