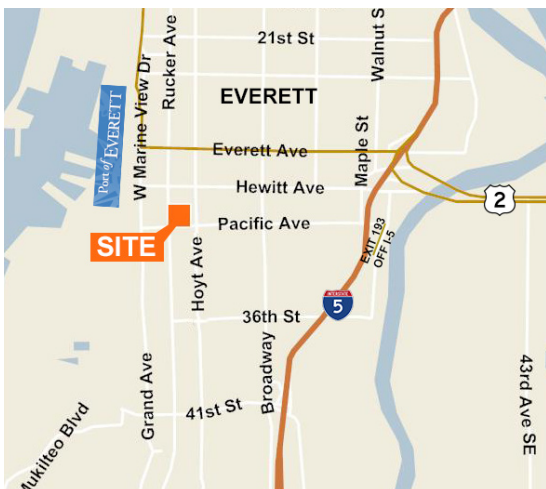




For Sale

3,250 SF stand-alone office building near courthouse



Downtown Everett location, across the street from courthouse

A mix of private offices and open bullpen throughout

12+ parking places, partially undercover

Two (2) large storage areas near covered parking

Highly visible large pole sign on Hoyt Avenue

Excellent access to I-5 north and south via Pacific Avenue

Sales Price: \$625,000

Contact

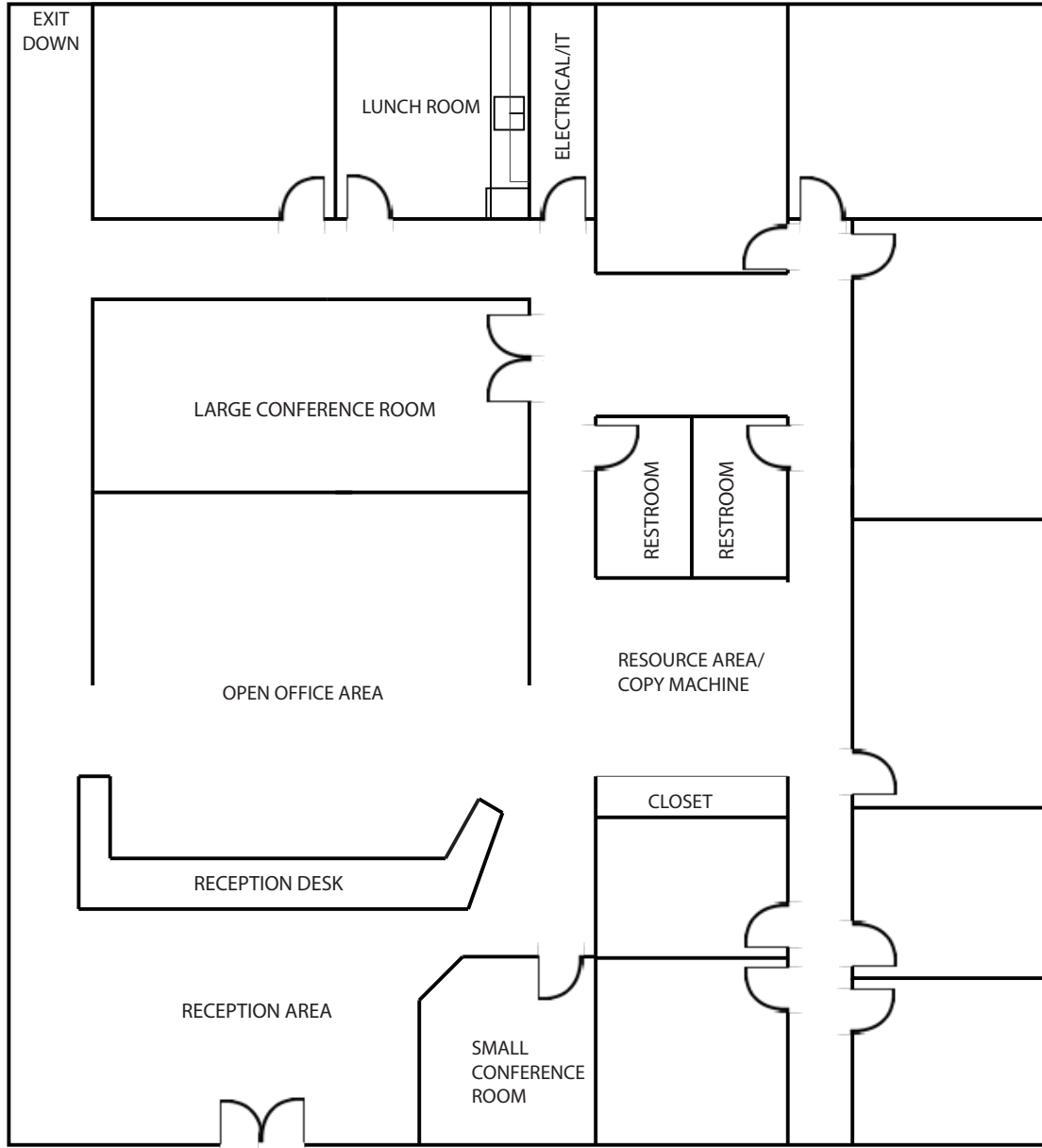
Matthew P. Henn
Senior Vice President
206.890.7800
mhenn@kiddermathews.com

Matthew Hagen, SIOR
Senior Vice President
425.283.5782
mhagen@kiddermathews.com

kiddermathews.com

For Sale

Hoyt Avenue Office Building



2015 REAL ESTATE TAXES

\$7,385.04

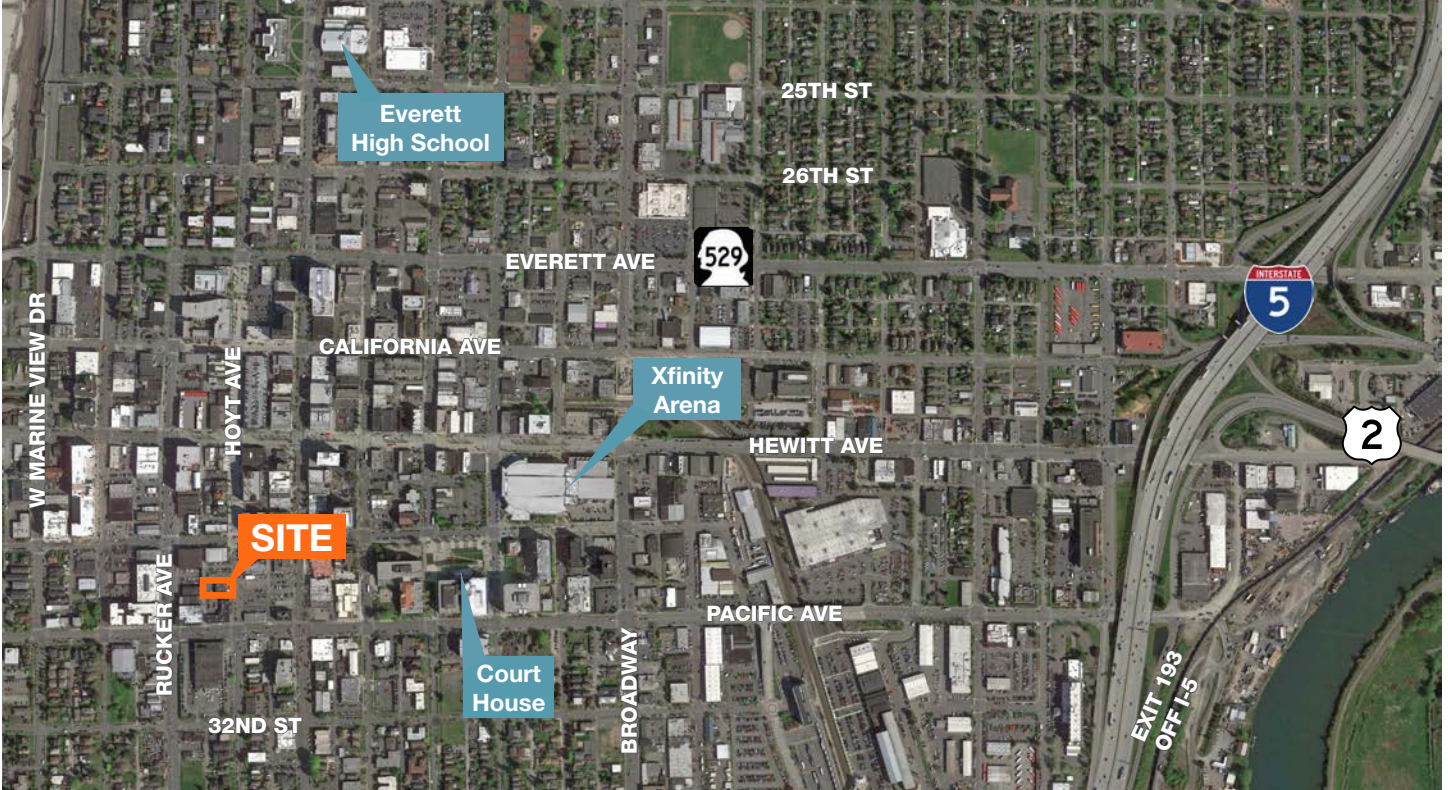
kiddermathews.com

This information supplied herein is from sources we deem reliable. It is provided without any representation, warranty or guarantee, expressed or implied as to its accuracy. Prospective Buyer or Tenant should conduct an independent investigation and verification of all matters deemed to be material, including, but not limited to, statements of income and expenses. Consult your attorney, accountant, or other professional advisor.

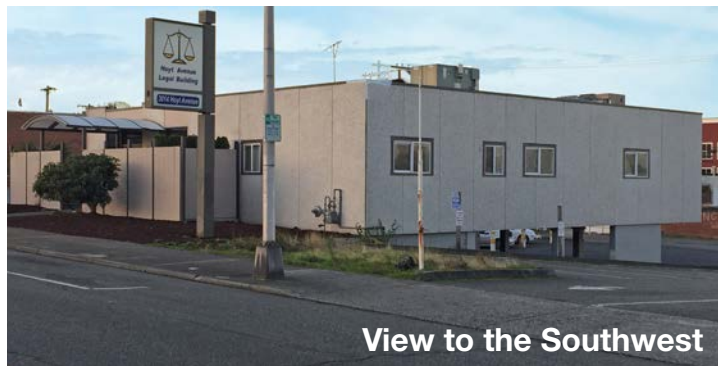


For Sale

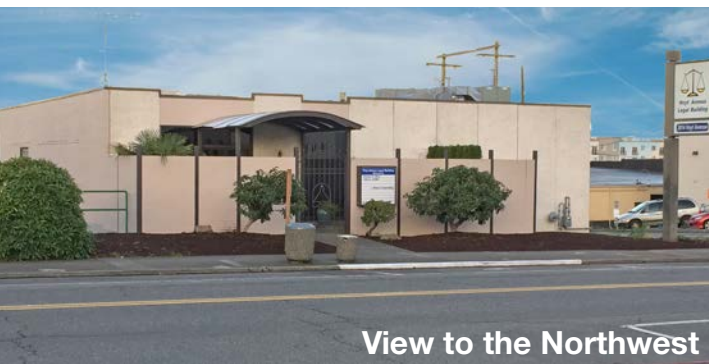
Hoyt Avenue Office Building



View to the West



View to the Southwest



View to the Northwest



View of covered garage

This information supplied herein is from sources we deem reliable. It is provided without any representation, warranty or guarantee, expressed or implied as to its accuracy. Prospective Buyer or Tenant should conduct an independent investigation and verification of all matters deemed to be material, including, but not limited to, statements of income and expenses. Consult your attorney, accountant, or other professional advisor.