

LOGAN SQUARE

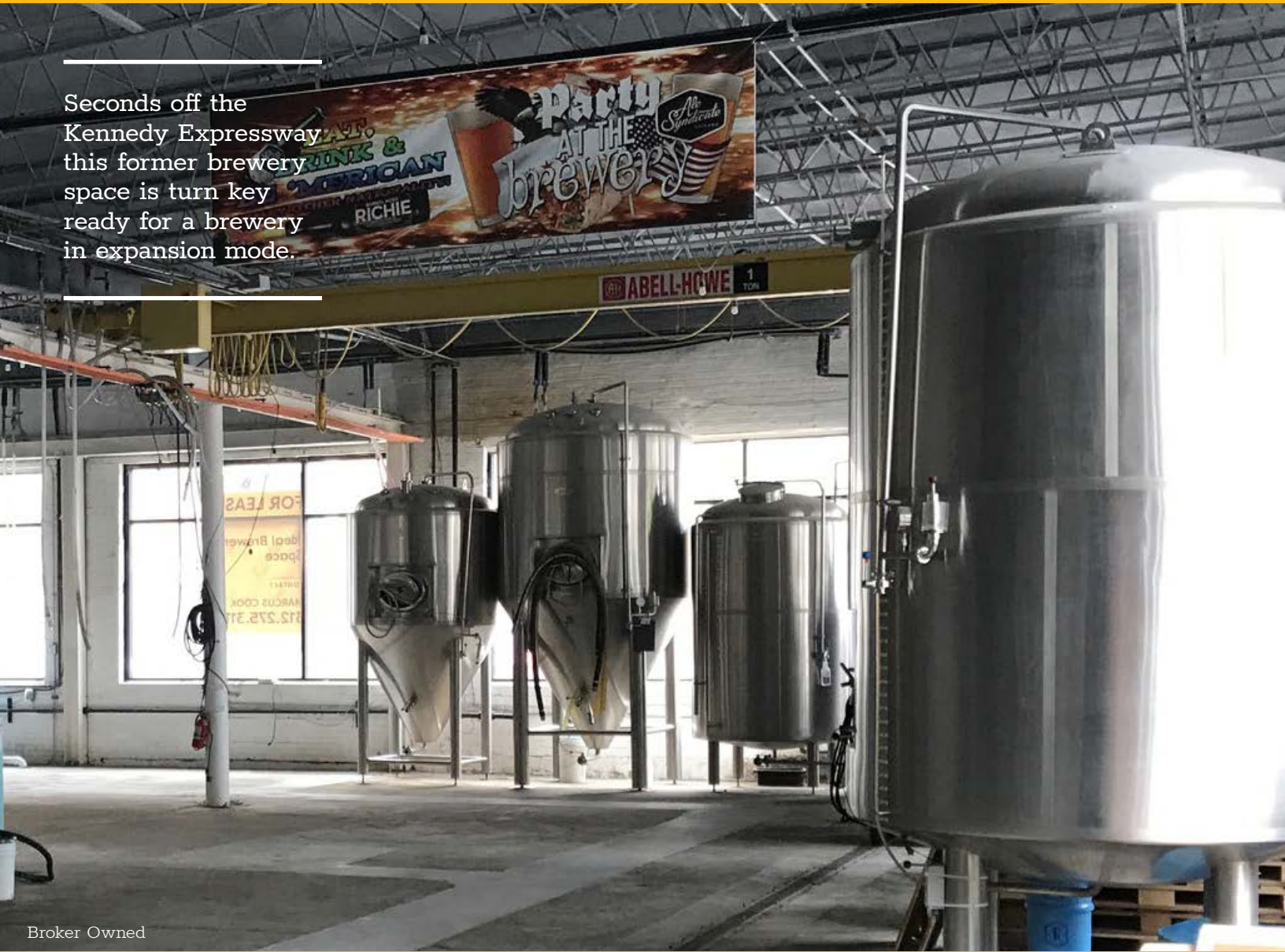


2601

DIVERSEY

2nd Generation Brewery Space Available

Seconds off the Kennedy Expressway this former brewery space is turn key ready for a brewery in expansion mode.



Broker Owned

FOR LEASING INFORMATION CONTACT:

Marcus Cook

312.275.3112

marcus@baumrealty.com

 **BAUM**
REALTY GROUP



Site Highlights

TURN-KEY BREWERY SPACE

±6,462 SF available

A wide variety of **brewery equipment in excellent shape is included** as a lease hold item

Outdoor event space available with

EXCEPTIONAL STREET PRESENCE & VISIBILITY

Located seconds off the Kennedy Expressway

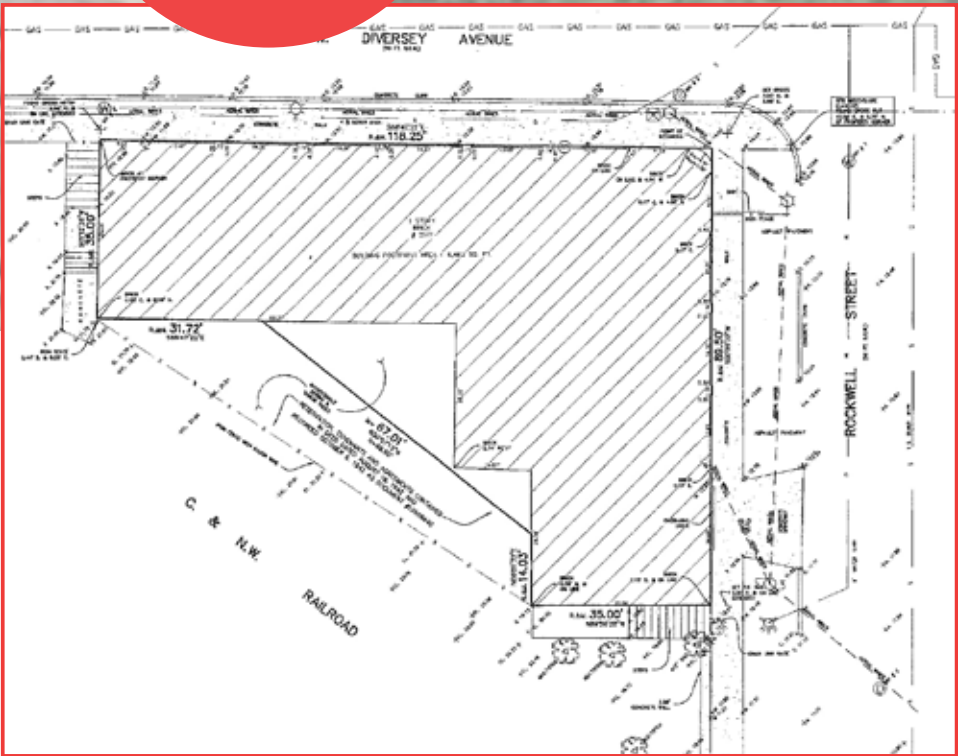
Incredible street presence with just over **118 feet of frontage** along Diversey Avenue

Kennedy Expressway signage potential

W. DIVERSEY AVENUE



±6,462 SF
118 FEET OF FRONTAGE



▲ **SITE PLAN**

◀ **SURVEY**

FOR LEASING INFORMATION CONTACT:

Marcus Cook 312.275.3112 marcus@baumrealty.com

LOGAN SQUARE



2601

DIVERSEY

2nd Generation Brewery Space Available



FOR LEASING INFORMATION CONTACT:

Marcus Cook

312.275.3112

marcus@baumrealty.com

WEBSITE:

www.baumrealty.com



© 2017 All information supplied is from sources deemed reliable and is furnished subject to errors, omissions, modifications, removal of the listing from sale or lease, and to any listing conditions, including the rates and manner of payment of commissions for particular offerings, the terms of which are available to principals or duly licensed brokers. This information may include estimates and projections with respect to future events, and these future events may or may not actually occur. Such estimates and projections reflect various assumptions concerning anticipated results. While we believe these assumptions are reasonable, there can be no assurance that any of these estimates and projections will prove to have been correct. Therefore, actual results may vary materially from these forward-thinking estimates and projections. Any square footage dimensions set forth are approximate.