

130-11 ATLANTIC AVENUE

QUEENS, NY 11418



Industrial Building

DIRECT LEASE



TOTAL BUILDING SIZE: 45,000 SF | DIVISIONS AVAILABLE: 15,000- 45,000 SF

SPACE FEATURES: FLOOR LOAD: 120 POUNDS PSF

- Zone: M1-1
- Ceiling Height: 15 feet
- Drive-in: 2
- Loading Dock: 1
- Parking: 15 private spaces
- Heat: Gas
- Power: Heavy
- Truck Access Via: I-678 Van Wyck Expressway & Atlantic Avenue

ACCESS TO TRANSPORTATION:

- 12 minute walk to Jamaica LIRR and E/J/Z subway
- 8 minute drive to JFK Airport
- 15 minute drive to LGA Airport
- 30 minute drive to Times Square
- 60 minute drive to Port of Newark

William Diana / william.diana@cushwake.com / 631 942 2467

CUSHMAN & WAKEFIELD
1290 Avenue of the Americas
New York, NY 10104
www.cushmanwakefield.com

130-11 ATLANTIC AVENUE

QUEENS, NY 11418



Industrial Building

DIRECT LEASE

- **TERM:** OPEN
- **POSSESSION:** IMMEDIATE
- **RENT:** \$16 PSF, MG



William Diana / william.diana@cushwake.com / 631 942 2467

CUSHMAN & WAKEFIELD
1290 Avenue of the Americas
New York, NY 10104
www.cushmanwakefield.com

A full commission computed and earned in accordance with the rates and conditions of our agency agreement with our principal, when received from our principal, will be paid to the cooperating broker who consummates a lease which is unconditionally executed and delivered by and between lessor and lessee (a copy of the rates and conditions referred to above is available upon request).

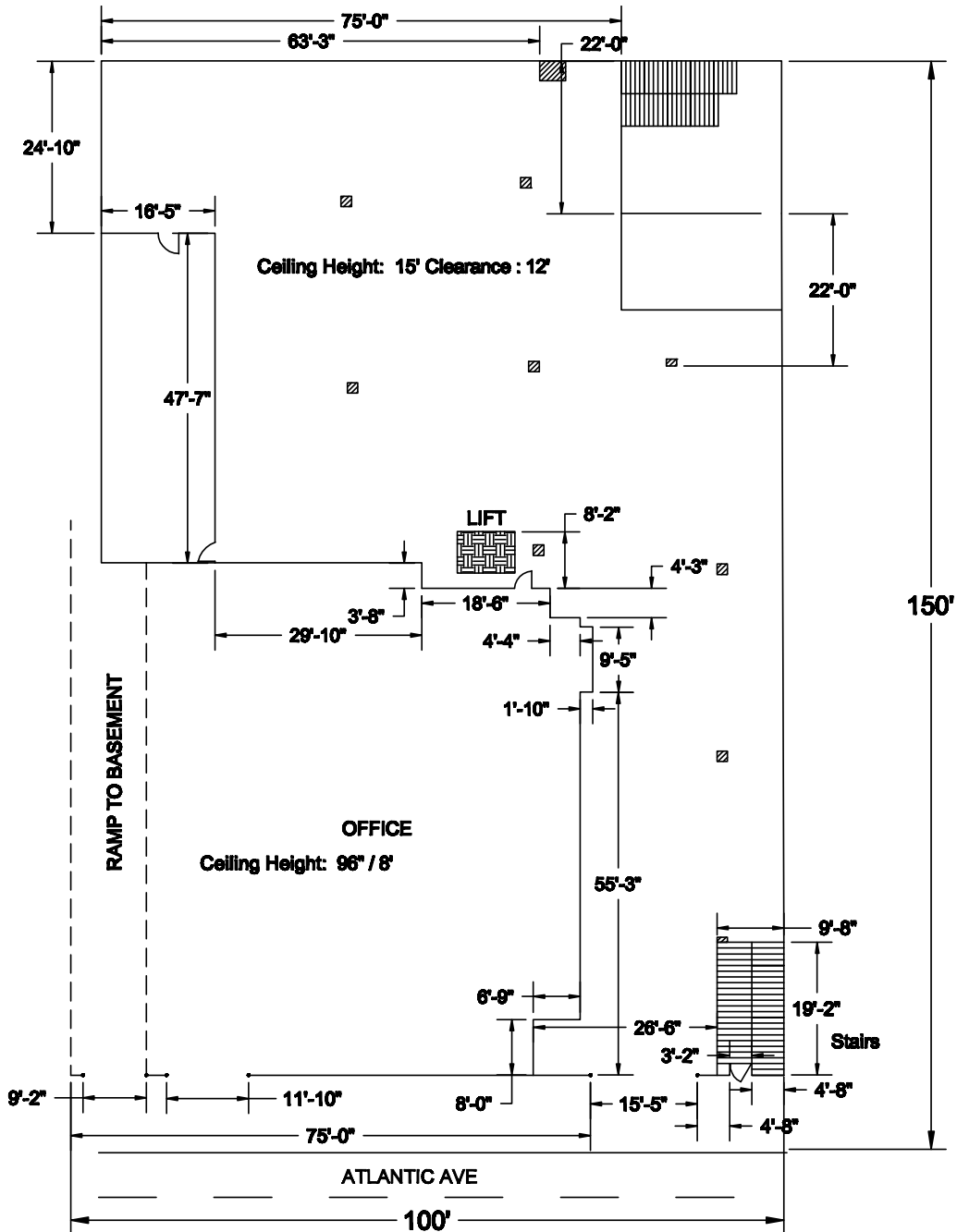
130-11 ATLANTIC AVENUE

QUEENS, NY 11418



Floor Plan

DIRECT LEASE



William Diana / william.diana@cushwake.com / 631 942 2467

CUSHMAN & WAKEFIELD
1290 Avenue of the Americas
New York, NY 10104
www.cushmanwakefield.com

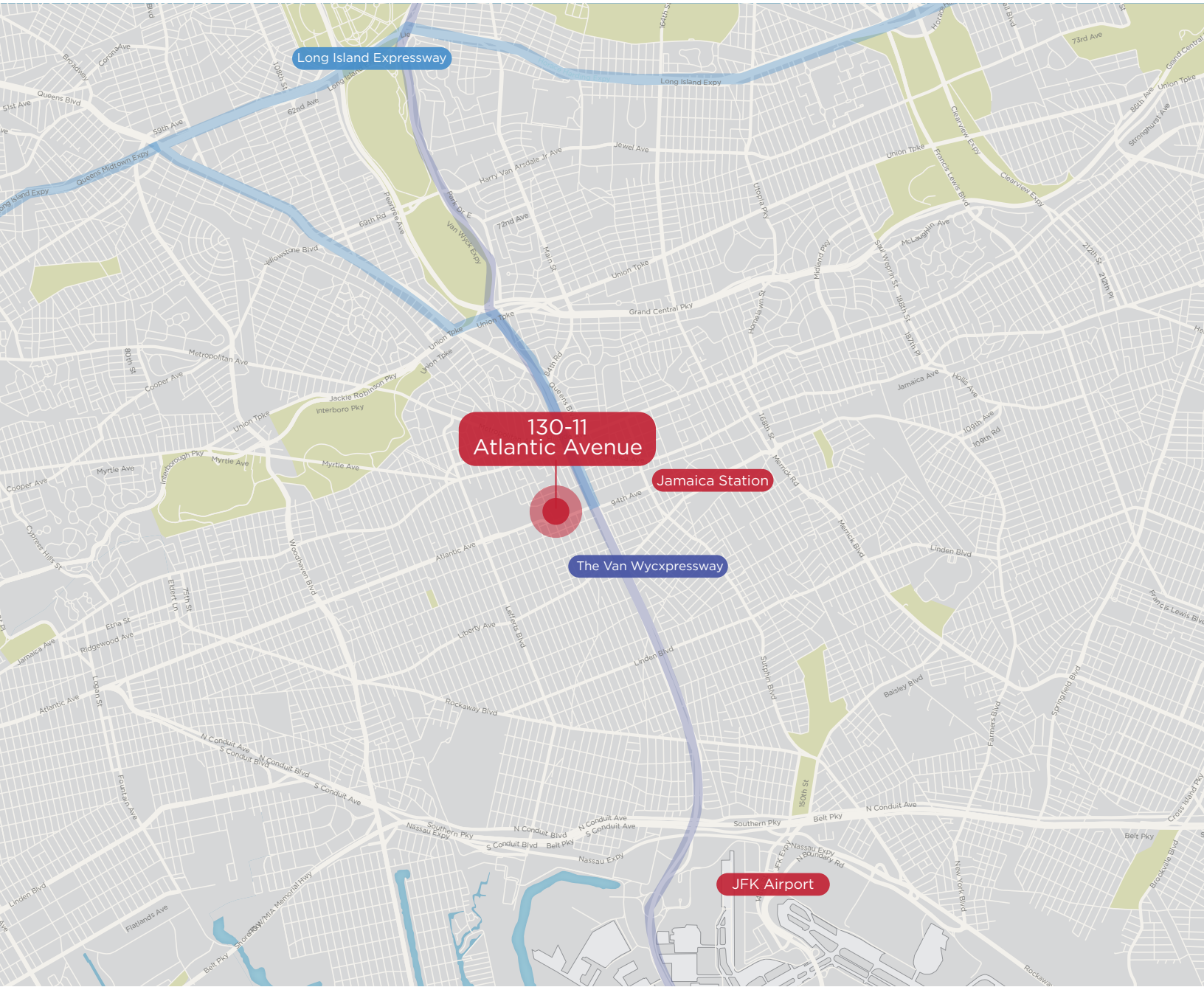
130-11 ATLANTIC AVENUE

QUEENS, NY 11418



Map

DIRECT LEASE



William Diana / william.diana@cushwake.com / 631 942 2467

CUSHMAN & WAKEFIELD
1290 Avenue of the Americas
New York, NY 10104
www.cushmanwakefield.com

A full commission computed and earned in accordance with the rates and conditions of our agency agreement with our principal, when received from our principal, will be paid to the cooperating broker who consummates a lease which is unconditionally executed and delivered by and between lessor and lessee (a copy of the rates and conditions referred to above is available upon request).