



# For Sublease

## Available 2nd floor creative office 10,609 rsf

- Flexible, open floor plan caters to the needs of the tenant
- Furniture may be made available
- Modern design using heavy timber framing beautifully incorporates wood flooring, exposed wood ceilings and beams
- Amenities include fitness rooms with lockers, bike hub, and a rooftop deck exclusive for office tenants
- Off-street parking ratio included
- Flexible terms available, 1-3 years
- Asking rate: \$25.50/rsf, NNN

**38 NW Davis Street  
Portland, OR**

---

### Jones Lang LaSalle Brokerage, Inc

1120 NW Couch Street, Suite 500  
Portland, OR 97209

+1 503 972 8000

[www.jll.com/portland](http://www.jll.com/portland)

### Jake Lancaster

Licensed in Oregon

+1 503 972 8612

[jake.lancaster@am.jll.com](mailto:jake.lancaster@am.jll.com)

### Mike Malone

Licensed in Oregon

+1 503 972 8609

[mike.malone@am.jll.com](mailto:mike.malone@am.jll.com)

### Andrew Rosengarten

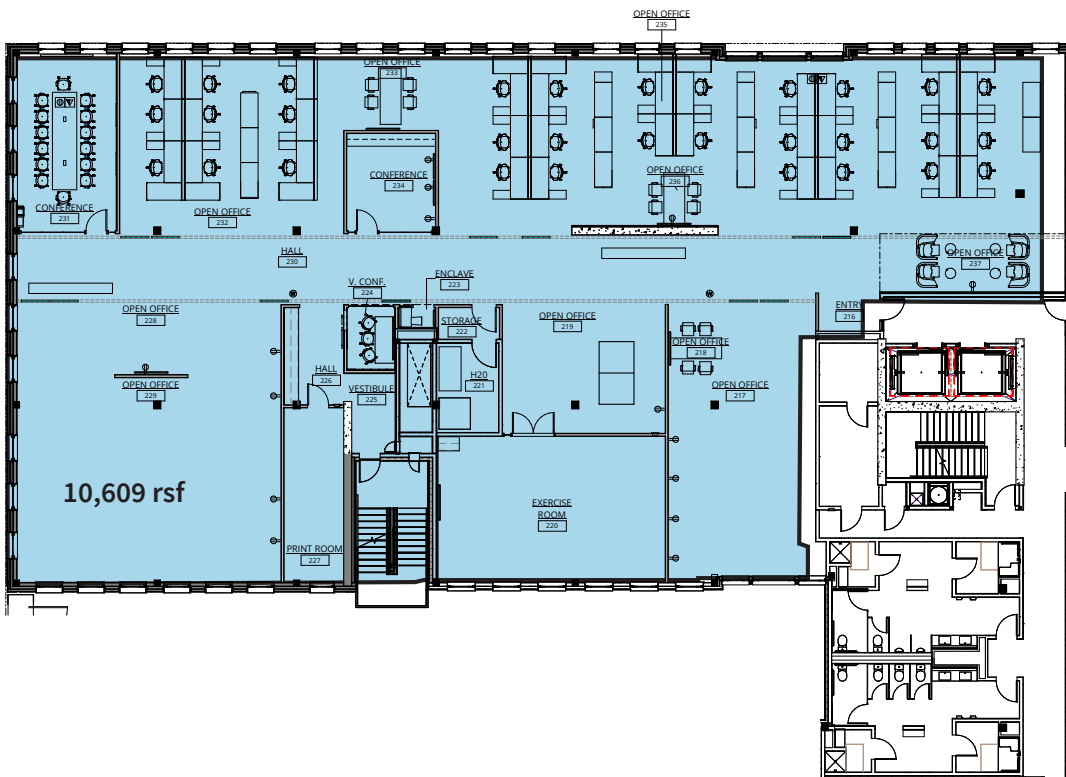
Licensed in Oregon

+1 503 972 8097

[andrew.rosengarten@am.jll.com](mailto:andrew.rosengarten@am.jll.com)

---





**Jones Lang LaSalle Brokerage, Inc**

1120 NW Couch Street, Suite 500  
 Portland, OR 97209  
 +1 503 972 8000  
[www.jll.com/portland](http://www.jll.com/portland)

**Jake Lancaster**

Licensed in Oregon  
 +1 503 972 8612  
[jake.lancaster@am.jll.com](mailto:jake.lancaster@am.jll.com)

**Mike Malone**

Licensed in Oregon  
 +1 503 972 8609  
[mike.malone@am.jll.com](mailto:mike.malone@am.jll.com)

**Andrew Rosengarten**

Licensed in Oregon  
 +1 503 972 8097  
[andrew.rosengarten@am.jll.com](mailto:andrew.rosengarten@am.jll.com)

**DISCLAIMER**

©2017 Jones Lang LaSalle IP, Inc. All rights reserved. All information contained herein is from sources deemed reliable; however, no representation or warranty is made to the accuracy thereof.

