

Available

28170 SW BOBERG ROAD

Wilsonville, OR 97070



Available 30 Days Notice

- +/- 3,000 SF shell with 2,000 SF of office on two floors.
- Grade loading.
- Good parking ratio - 3/1,000 SF.
- SMART stop adjacent to property.
- Heated warehouse - great for manufacturers or distributors.
- \$2,400/Month Gross.
- Tour by appointment only - Do not disturb tenant.



NAI Norris, Beggs
& Simpson

Commercial Real Estate Services, Worldwide.

see floor plan on reverse side

Contact Information

Ross Connor
tel 503 273 0386

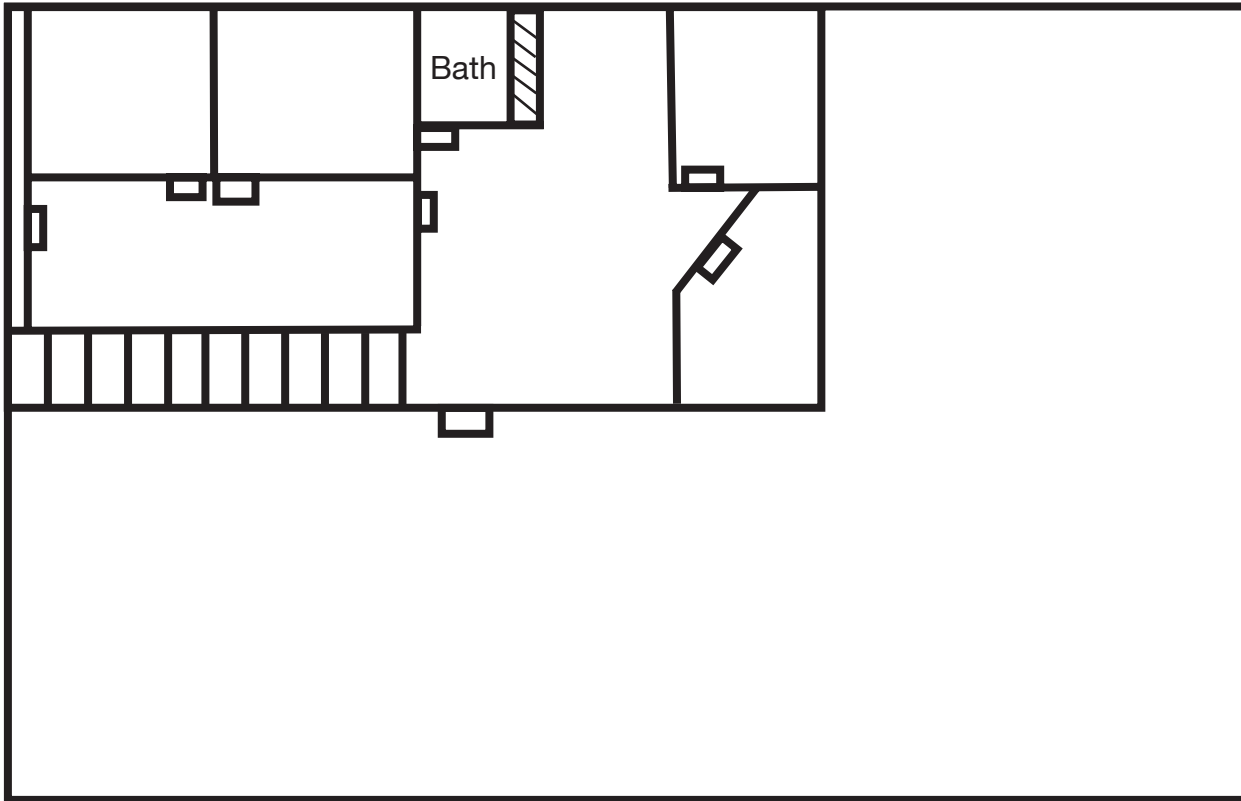
rconnor@nai-nbs.com

The information contained herein has been obtained from sources we deem reliable. We do not, however, guarantee its accuracy. All information should be verified prior to purchase or lease.

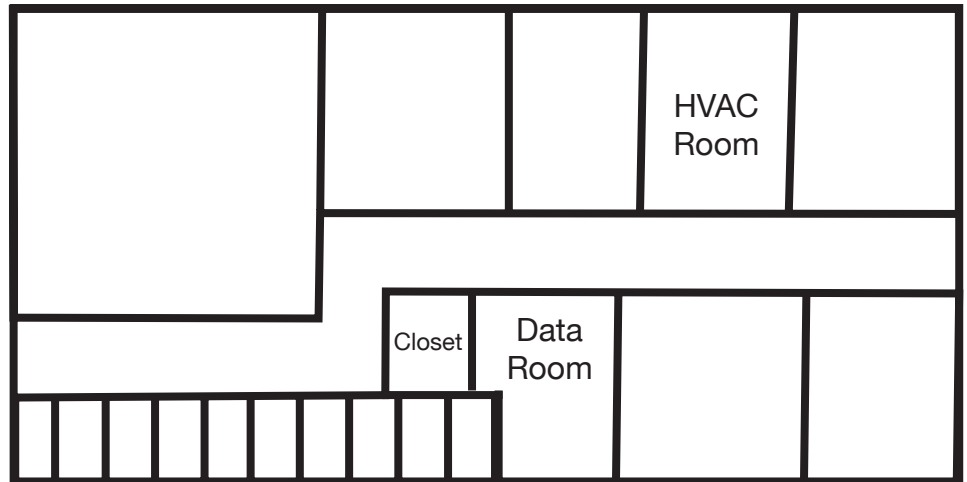
28170 SW BOBERG ROAD

Floor Plan

**Floor plans not to scale*



Second Floor Office



NAI Norris, Beggs
& Simpson

Commercial Real Estate Services, Worldwide.

Contact Information

Ross Connor
tel 503 273 0386

rconnor@nai-nbs.com

The information contained herein has been obtained from sources we deem reliable. We do not, however, guarantee its accuracy. All information should be verified prior to purchase or lease.