



## Highlights

- On-site day care and deli
- Frontier Communications and Spectrum Fiber available
- 5.00/1,000 parking
- Sunforest Corporate Campus includes 360 apartment units
- Convenient access and visibility from Veterans Expressway and Hillsborough Avenue
- Five minutes from Tampa International Airport

## Get more information

**Clay Witherspoon**  
Managing Director | Principal  
+1 813 444 0626  
[clay.witherspoon@avisonyoung.com](mailto:clay.witherspoon@avisonyoung.com)

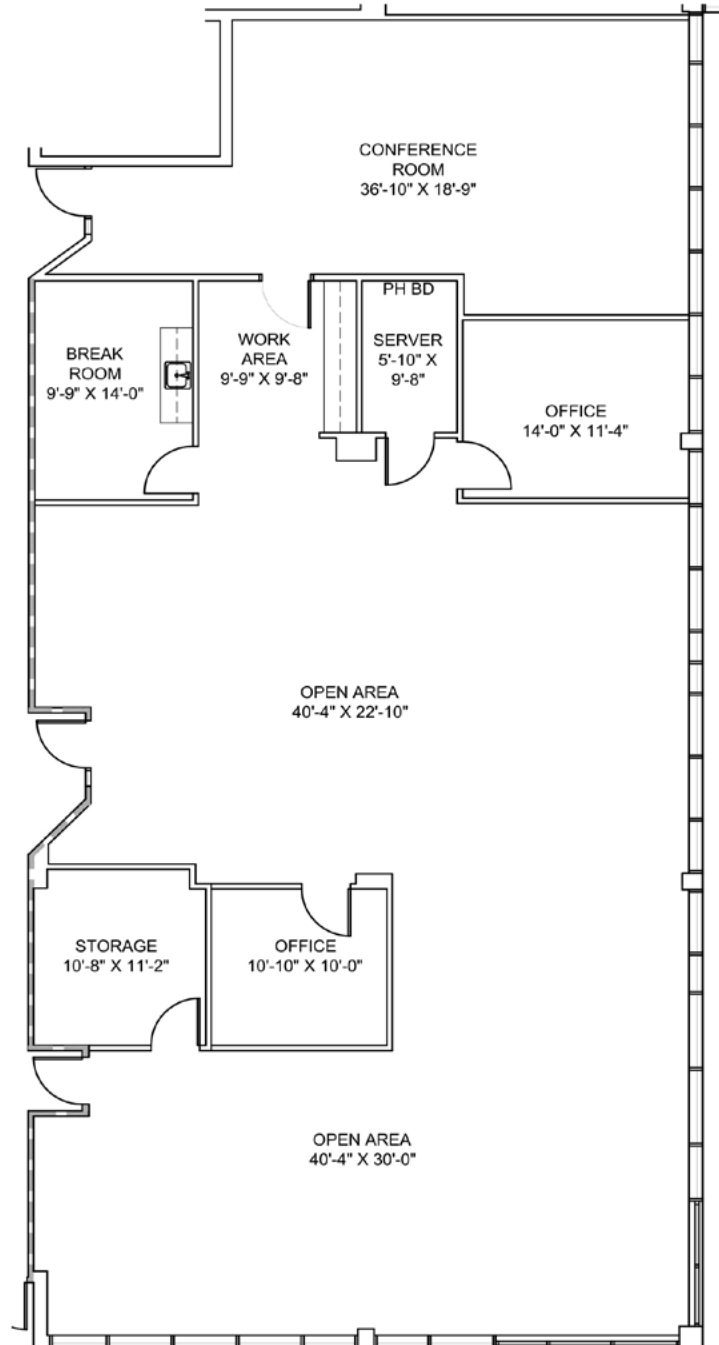
[avisonyoung.com](http://avisonyoung.com)

# Suite 105

## 3,866 sf

Available 1/1/21

Sunforest II  
5110 Sunforest Drive  
Tampa, FL 33634



Get more  
information

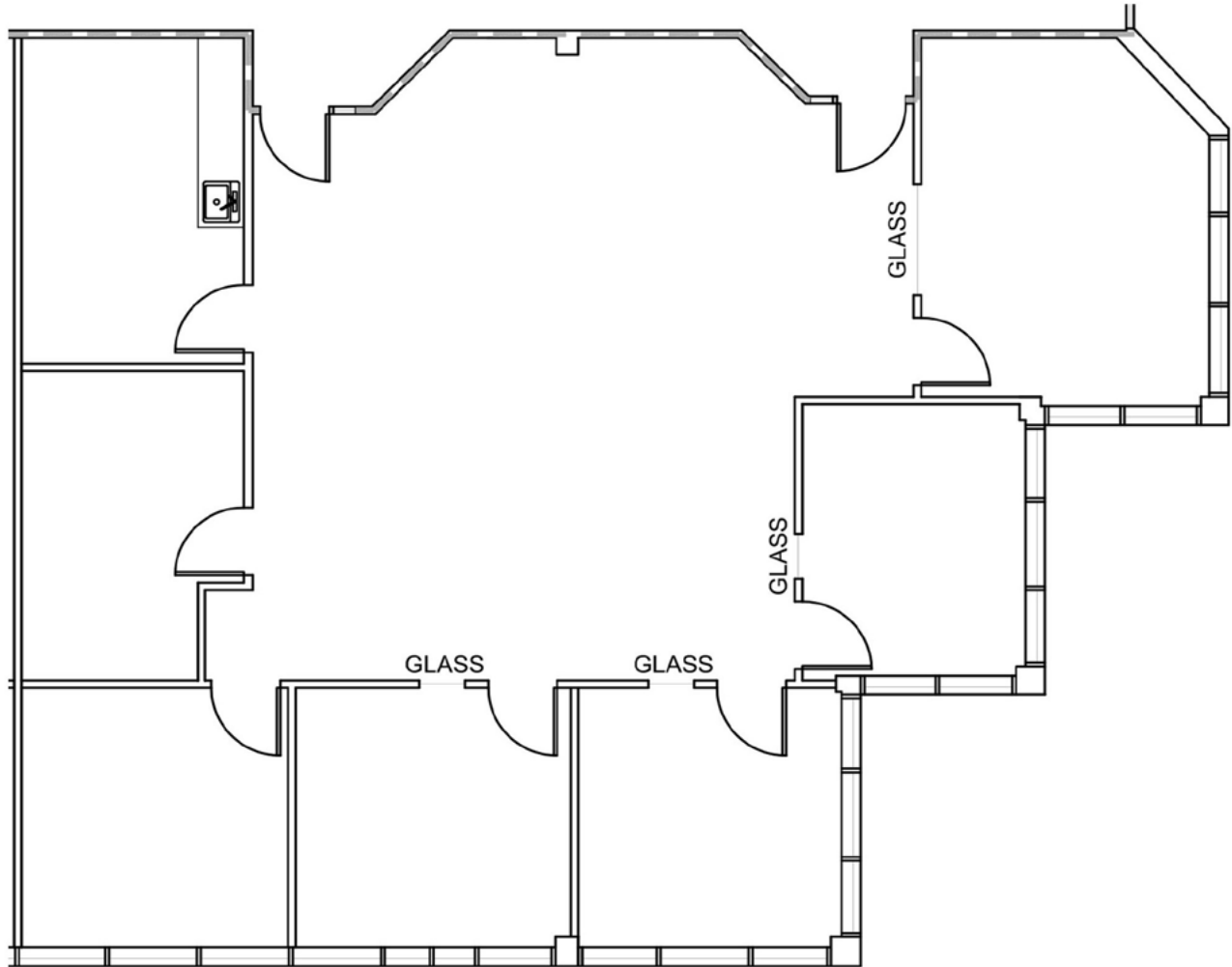
**Clay Witherspoon**  
Managing Director | Principal  
+1 813 444 0626

**AVISON  
YOUNG**

# Suite 150

2,169 sf

Sunforest II  
5110 Sunforest Drive  
Tampa, FL 33634



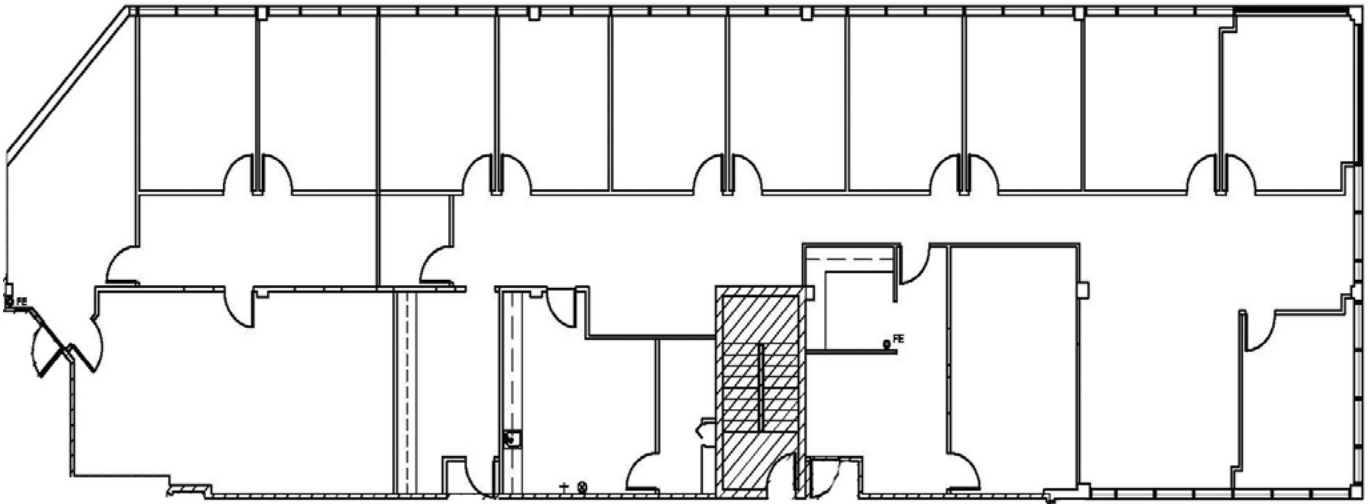
Get more  
information

**Clay Witherspoon**  
Managing Director | Principal  
+1 813 444 0626

**AVISON  
YOUNG**

**Suite 160**  
**5,847 sf**

Sunforest II  
5110 Sunforest Drive  
Tampa, FL 33634



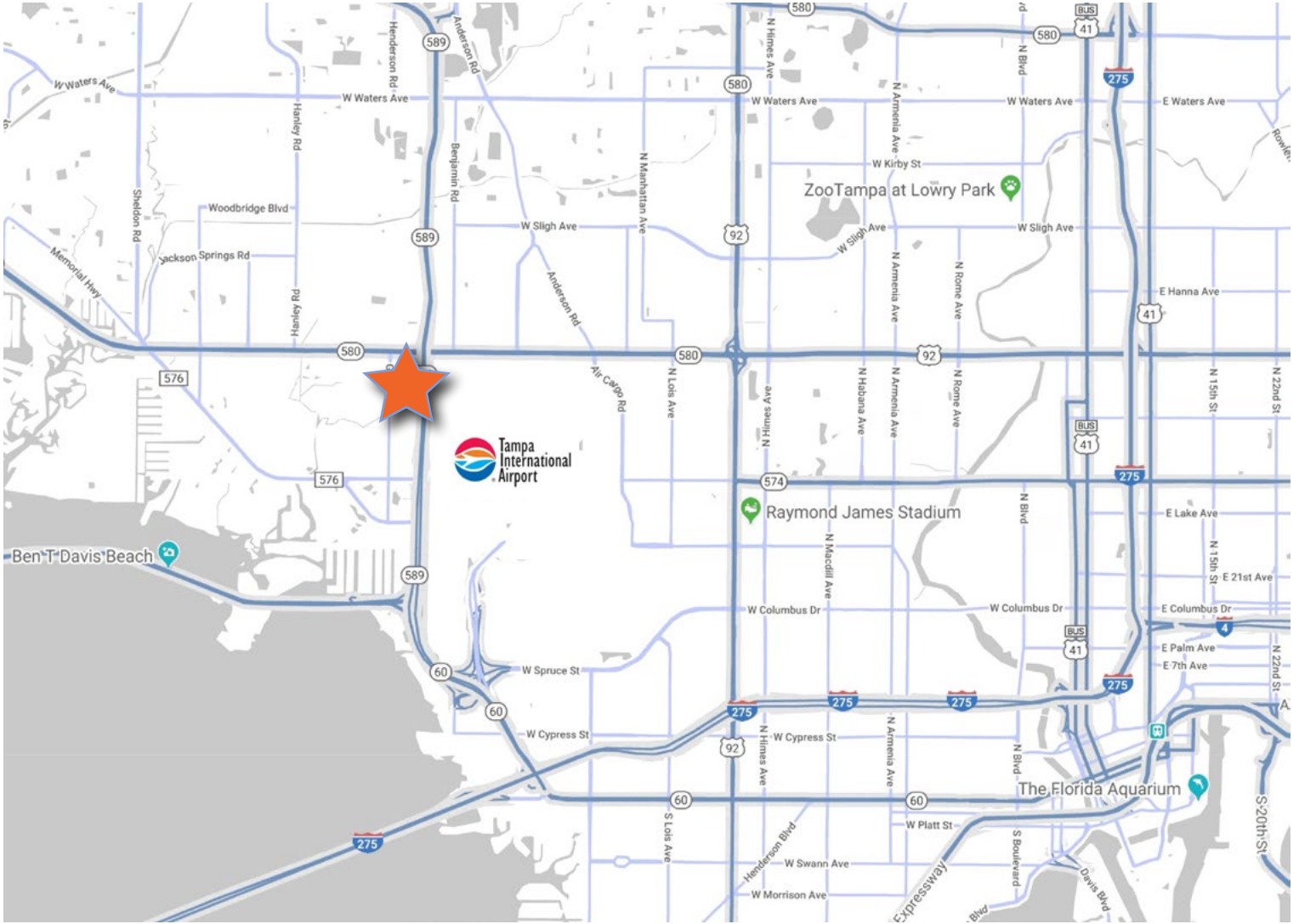
**Get more  
information**

**Clay Witherspoon**  
Managing Director | Principal  
+1 813 444 0626

**AVISON  
YOUNG**

# Location Map

Sunforest II  
5110 Sunforest Drive  
Tampa, FL 33634



Get more  
information

**Clay Witherspoon**  
Managing Director | Principal  
+1 813 444 0626

**AVISON  
YOUNG**