

UPPER WEST
SIDE

NEW YORK
NY

2546 BROADWAY



CONCEPTUAL RENDERING

SPACE DETAILS

LOCATION

East block between West 95th and 96th Streets

APPROXIMATE SIZE

Ground Floor 1,480 SF

CEILING HEIGHT

Ground Floor 13 FT

FRONTAGE

50 FT on Broadway

POSSESSION

Immediate

SITE STATUS

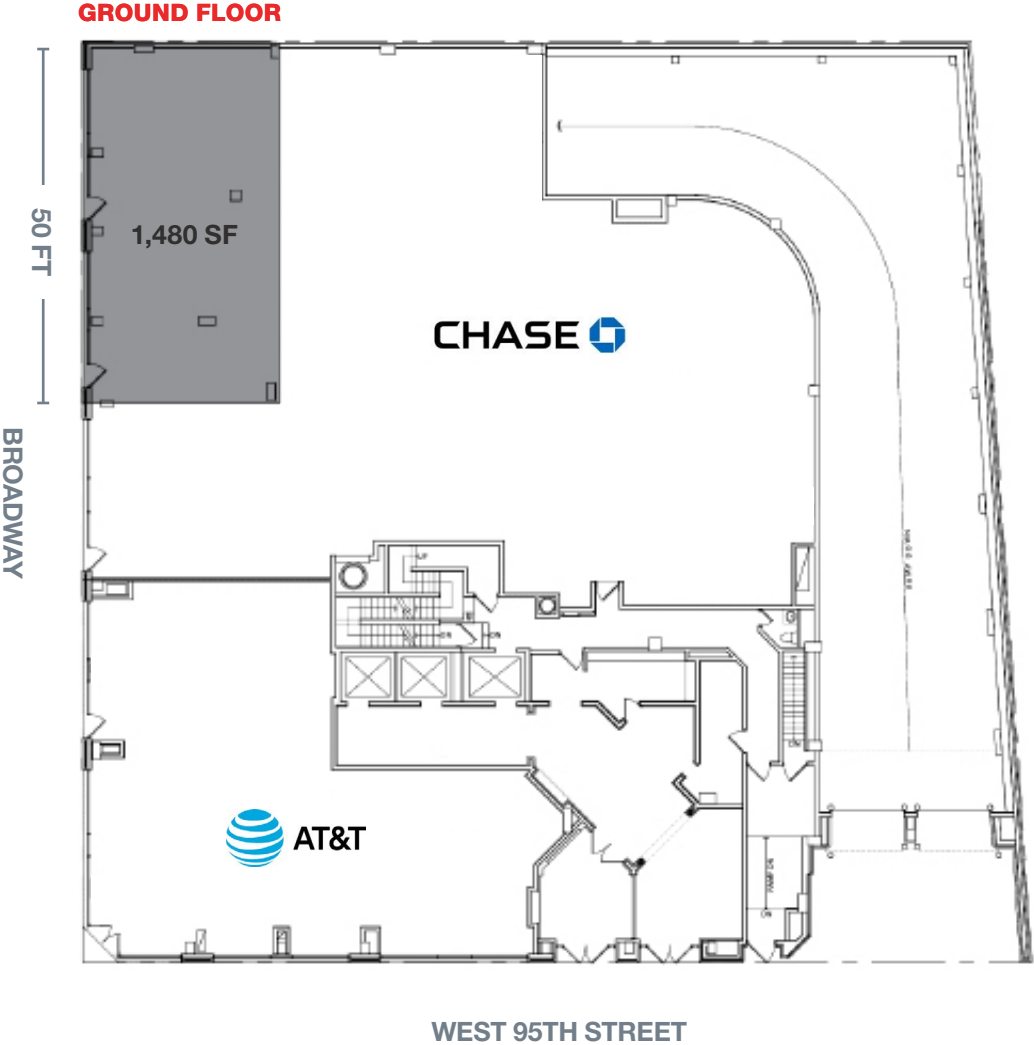
Formerly a portion of Mande's

NEIGHBORS

AT&T, Chase Bank, CVS pharmacy, Equinox Fitness, SoulCycle, Starbucks, and Le Pain Quotidien

COMMENTS

Expansive 50 FT of frontage along Broadway
Directly in front of the 1 2 3 subway entrance
Situated within the vastly dense Upper West Side



AREA RETAIL



CONTACT EXCLUSIVE AGENTS

ROSS KAPLAN
212.850.5418
rkaplan@ngkf.com

JASON P. PRUGER
212.372.2092
jpruger@ngkf.com



NGKF.COM

© 2019 NEWMARK KNIGHT FRANK RETAIL | The information contained herein has been obtained from sources deemed reliable but has not been verified and no guarantee, warranty or representation, either express or implied, is made with respect to such information. Terms of sale or lease and availability are subject to change or withdrawal without notice.