

RIDGE POINTE commercial real estate

for **SALE**

Development Tract

NEC of SH 276 & Rochelle Road
Rockwall, Texas 75032



LOCATION
NEC of SH 276 &
Rochelle Rd
Rockwall, TX 75032

AVAILABLE
9 Acres

PRICE
Call for Pricing

PROPERTY INFORMATION

- Located just east of the Rockwall EDC Tech Park and over 1,000 white-collar workers.
- Rockwall is one of the fastest growing counties in the United States.
- Close proximity to Costco, Belk, JC Penney, Home Depot, Lowe's, Bed, Bath & Beyond and more.

DEMOGRAPHICS

Variable	3 miles	5 miles	10 miles
2016 Population	19,560	56,442	174,907
2021 Projected Growth	18.2%	13.4%	10.9%
Average HH Income	\$90,658	\$98,650	\$96,009

FOR MORE INFORMATION:

David English
214-676-6424 | denglish@ridgepcr.com
972-961-8532 | www.ridgepcr.com



SALE

Development Tract

Rockwall, Texas 75032



FOR MORE INFORMATION:

David English

214-676-6424 | denglish@ridgecre.com

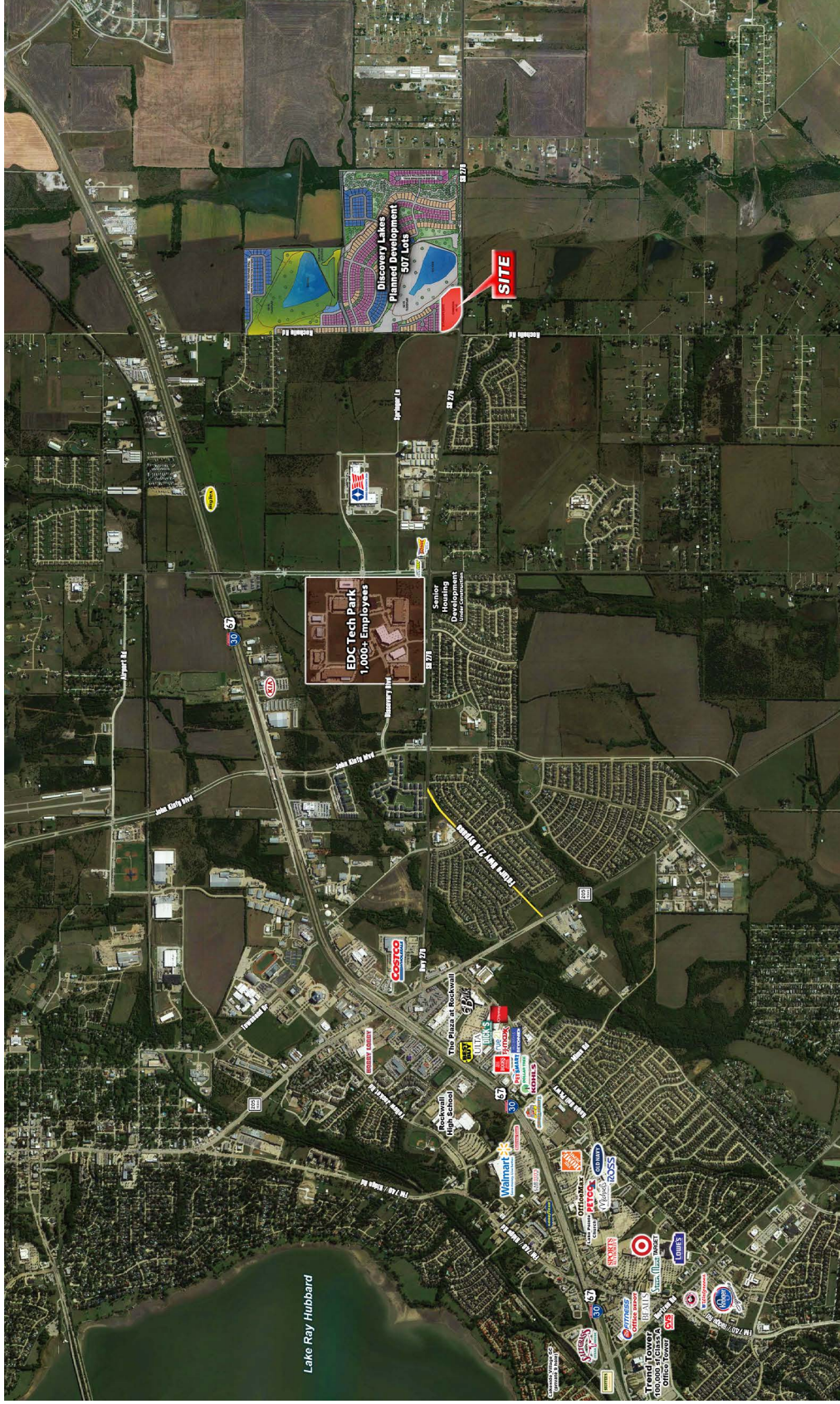
972-961-8532 | www.ridgecre.com

* The information contained herein was obtained from sources believed reliable, however, Ridge Pointe Commercial Real Estate ("Licensee") makes no guarantees, warranties or representations as to the completeness or accuracy thereof. The presentation of this property is subject to errors, omissions, change of price or conditions, prior sale or lease or withdrawal without notice. Texas law requires licensee to disclose that it is representing the Seller/Landlord in the marketing of this property.

Development Tract

Rockwall, Texas 75032

for SALE



FOR MORE INFORMATION:

David English

214-676-6424 | denglish@ridgepcr.com

972-961-8532 | www.ridgepcr.com

www.ridgepcr.com

* The information contained herein was obtained from sources believed reliable, however, Ridge Pointe Commercial Real Estate ("Licensee") makes no guarantees, warranties or representations as to the completeness or accuracy thereof. The presentation of this property is subject to errors, omissions, change of price or conditions, prior sale or lease or withdrawal without notice. Texas law requires licensee to disclose that it is representing the Seller/Landlord in the marketing of this property.

