

CORONADO OFFICE OR RETAIL SPACE FOR LEASE

1300-1330 Orange Avenue | Coronado | CA | 92118



Steven Martini

LIC. # 01330605

619 . 243 . 8451

smartini@qfcre.com

Emmett Cahill

LIC. # 02033604

619 . 243 . 8470

ecahill@qfcre.com

1495 Pacific Highway | Suite 450 | San Diego | CA | 92101

619 . 243 . 8454 | www.qfcre.com

The information contained herein has been obtained from sources considered to be reliable, but no guarantee of its accuracy is made by this company. In addition, no representation is made respecting zoning, condition of title, dimensions, or any matters of a legal or environmental nature. Such matters should be referred to legal counsel for determination. Terms and conditions are subject to change without prior notice. Subject to errors and omissions.

LEASING INFORMATION

❖ SUITE 150

- +/- 1,454 Rentable SF

❖ SUITE 250

- +/- 1,284 Rentable SF

LOCATION

- ❖ Coronado Island
- ❖ Walking Distance to Hotel Del Coronado, Local Shops / Restaurants / Entertainment
- ❖ (1) Block from Beaches

RENTAL RATE

- ❖ Asking | \$3.00 / SF
- Suite 150 - Plus NNN
- Suite 250 - Plus NNN

**CORONADO
PLAZA**

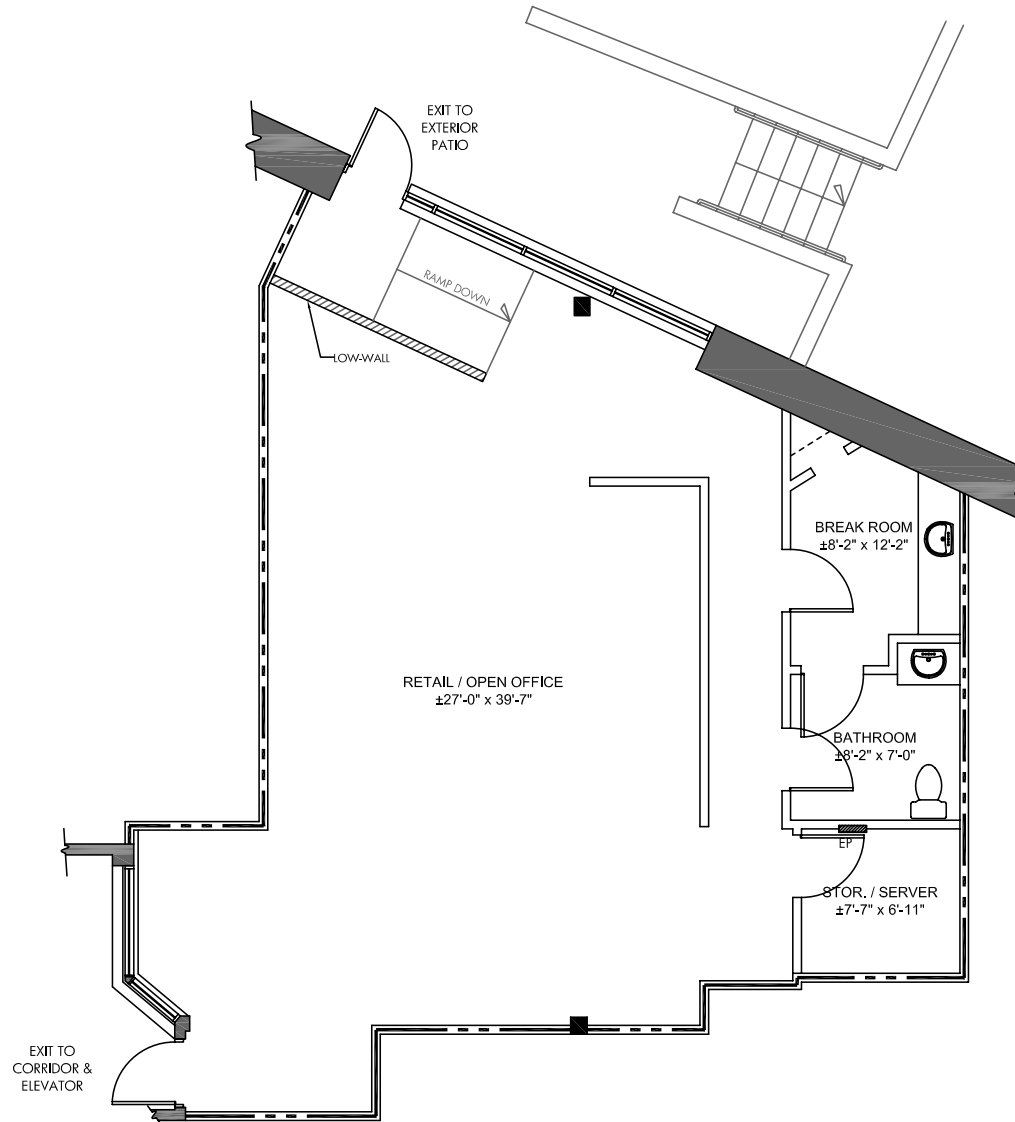
ORANGE AVENUE

R.H. DANA PLACE

CHURCHILL PLACE

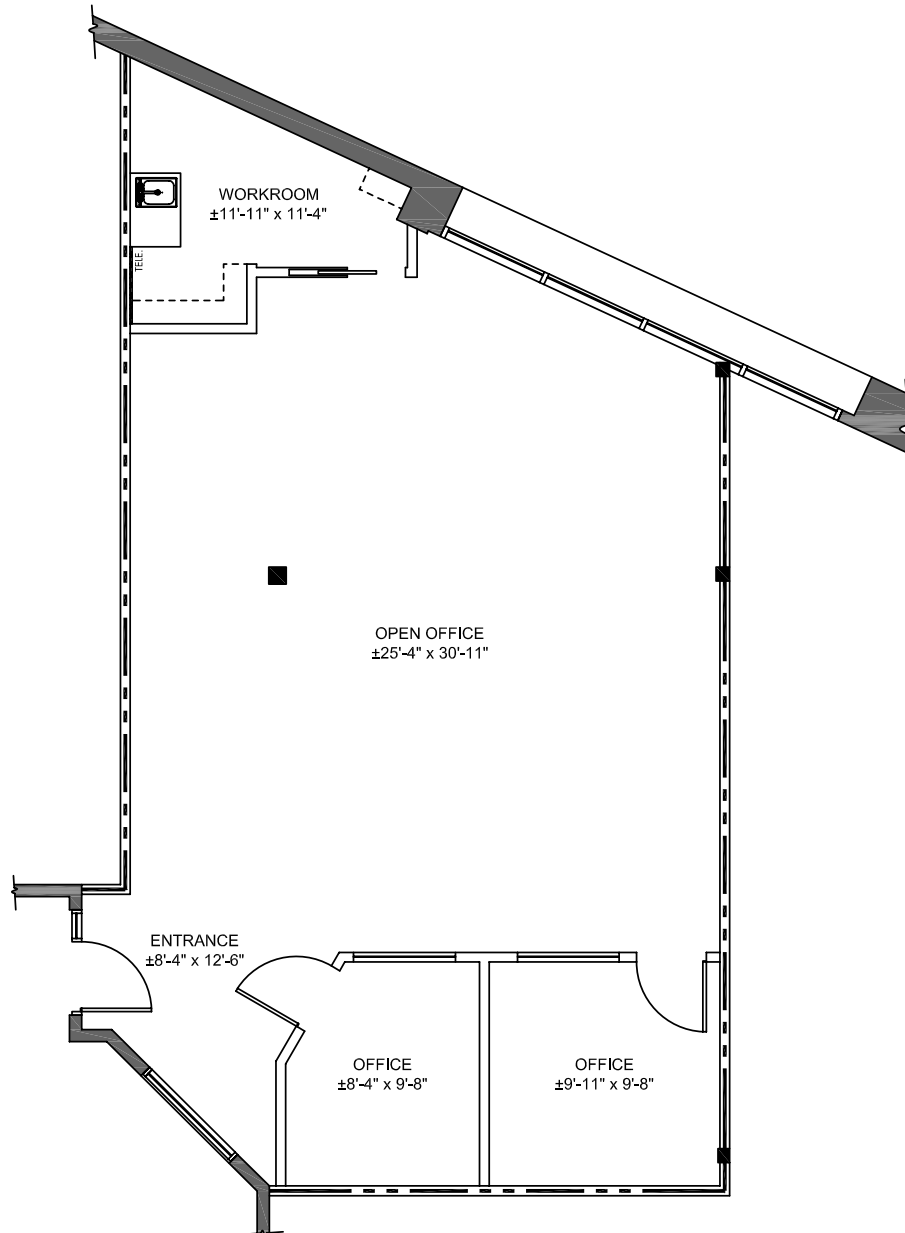
FLOOR PLAN

SUITE 150



FLOOR PLAN

SUITE 250







STEVEN MARTINI
LIC. # 01330605
619 . 243 . 8451
smartini@qfcre.com

EMMETT CAHILL
LIC. # 02033604
619 . 243 . 8470
ecahill@qfcre.com

1495 Pacific Highway | Suite 450 | San Diego | CA | 92101
619 . 243 . 8454 | www.qfcre.com

The information contained herein has been obtained from sources considered to be reliable, but no guarantee of its accuracy is made by this company. In addition, no representation is made respecting zoning, condition of title, dimensions, or any matters of a legal or environmental nature. Such matters should be referred to legal counsel for determination. Terms and conditions are subject to change without prior notice. Subject to errors and omissions.