

NOHO

NEW YORK
NY

659 BROADWAY



SPACE DETAILS

LOCATION

West block between Bleecker and West Third Streets

APPROXIMATE SIZE

Ground Floor	1,938 SF
Mezzanine	872 SF
Lower Level	1,938 SF
Total	4,748 SF

POSSESSION

Immediate

TERM

Long Term

FRONTAGE

40 FT on Broadway

SITE STATUS

Currently Blades

NEIGHBORS

Adidas, Away, Bandier, Best Buy, Casper, Chase, CorePower Yoga (coming soon), Crate & Barrel, Equinox, Gregory's Coffee, Kith, Levain Bakery (coming soon), Le Pain Quotidien, Rumble Boxing, Starbuck's, Swatch, Tender Greens (coming soon) and Urban Outfitters

COMMENTS

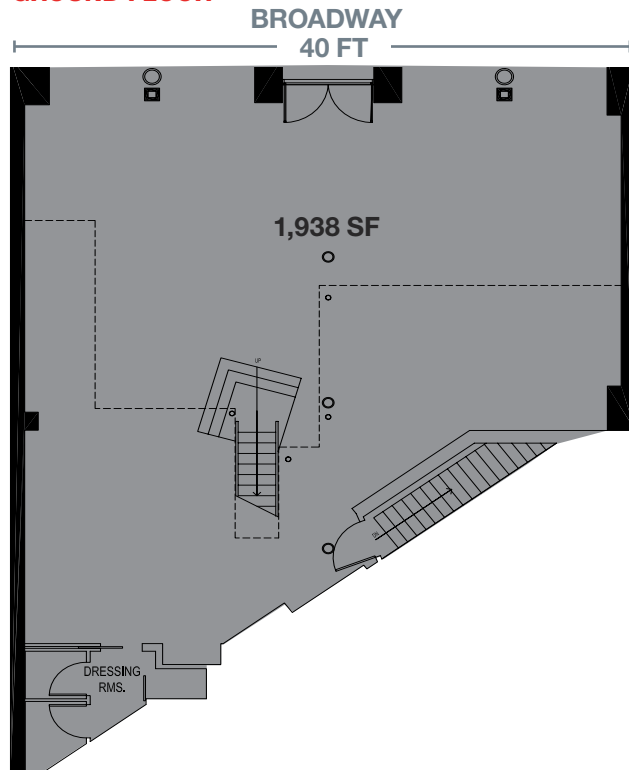
Available for the first time in 30 years

Expansive glass storefront

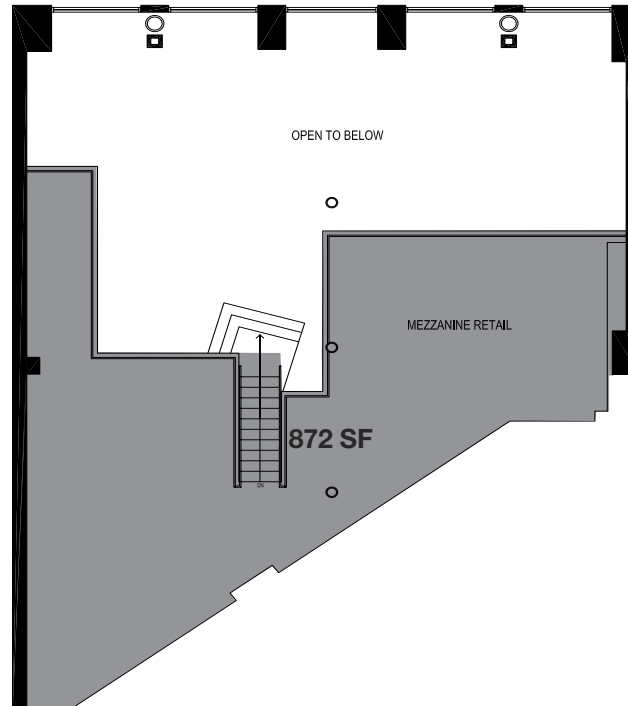
Dense seven-day-per-week foot traffic

Steps from the **B D F M 6** trains at the Broadway-Lafayette/Bleecker Street station that service 12 million riders annually

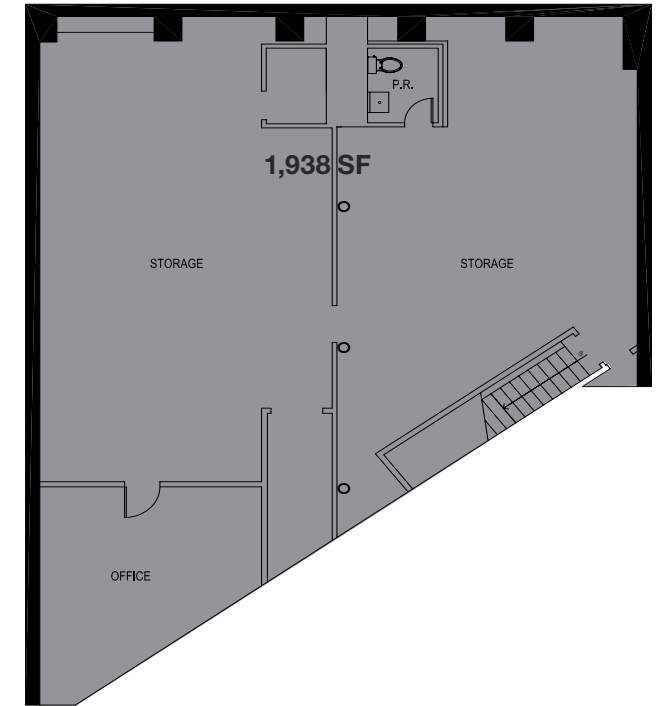
GROUND FLOOR



MEZZANINE



LOWER LEVEL



AREA RETAIL



CONTACT EXCLUSIVE AGENTS

ROSS KAPLAN
212.850.5418
rkaplan@ngkf.com

WILLIAM CHAPLIN
212.351.9352
william.chaplin@ngkf.com



NGKF.COM

© 2019 NEWMARK KNIGHT FRANK RETAIL. The information contained herein has been obtained from sources deemed reliable but has not been verified and no guarantee, warranty or representation, either express or implied, is made with respect to such information. Terms of sale or lease and availability are subject to change or withdrawal without notice.