

**FOR  
SALE**

# THE LACEY ESTATE

## 6th + Bahnson

6 acres prime for redevelopment



### size

6 acres  
(382' x 686')



### price

~~\$1,050,000~~  
**NEW PRICE**  
**\$2.75 per foot!**



### zoning

Site is currently zoned AG.  
Seller will assist in rezoning.



### location

Site is located at the signalized intersection of East 6th Street & Bahnson Avenue. This is a rare opportunity to acquire 6 acres within the City!



### traffic

East 6th Street:  
10,500 cars per day  
  
Bahnson Avenue:  
1,800 cars per day



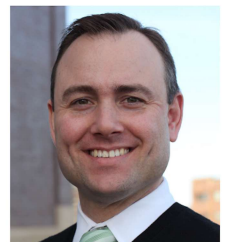
### co-tenancy

Washington High School,  
Anne Sullivan Elementary,  
Kenny Anderson Park, Oak  
View Branch Library

Information deemed reliable but not guaranteed.

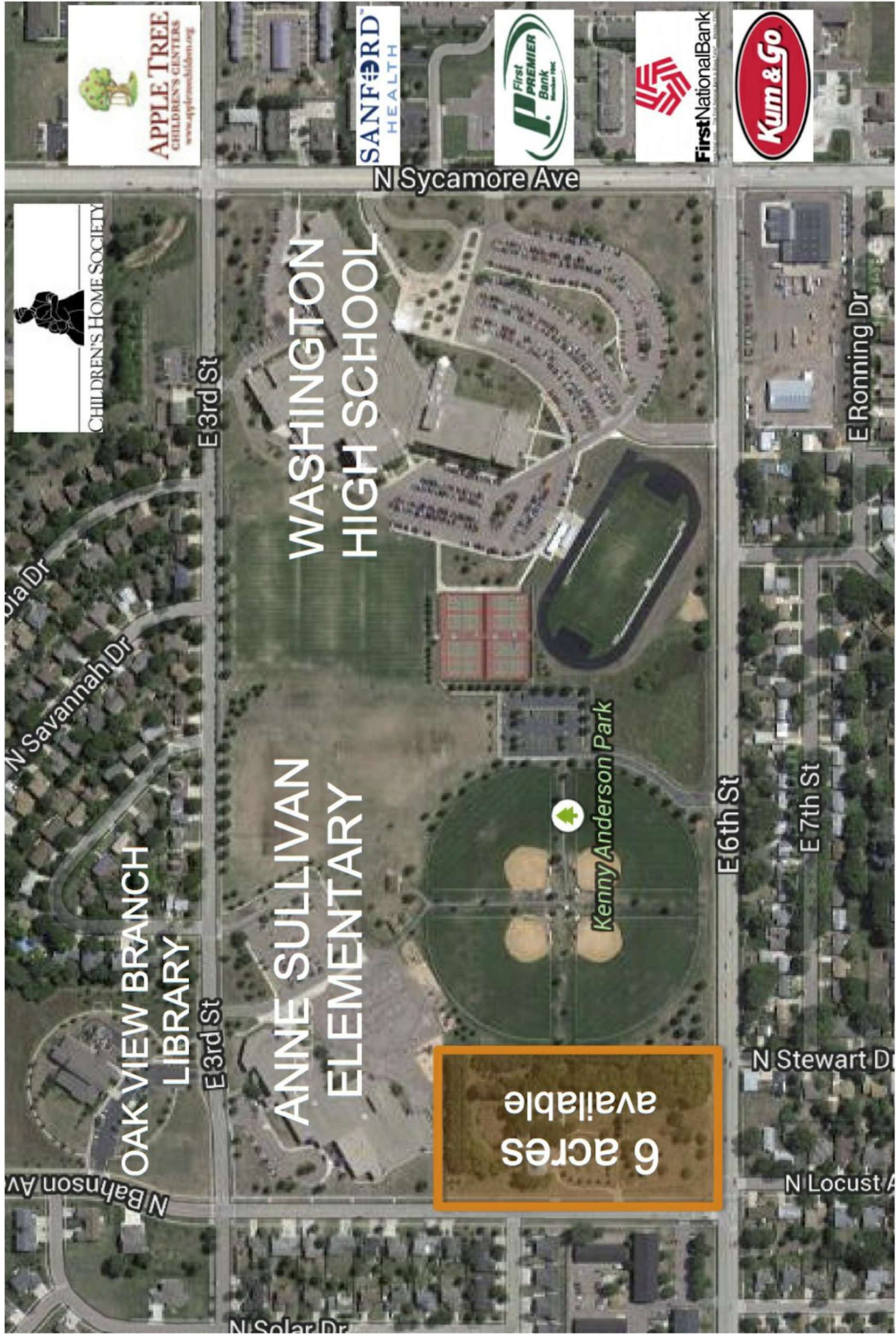


Lake Lorraine | 2571 Westlake Drive  
#100 Sioux Falls, South Dakota 57106  
VBClink.com | 605.361.8211



**605.376.0127**

Ryan.Tysdal@VBClink.com



The Lacey Estate : 6th + Bahnsen



The Lacey Estate : 6th + Bahnson