



OFFICE SPACE

FOR LEASE

±616 SF DENTAL / MEDICAL OFFICE

40 Eagle Rock Avenue, East Hanover, NJ 07936

For More Information, Contact

SCOTT G. SAVASTANO

Director of Capital Markets

sgsavastano@blauberg.com

973.379.6644 x147



830 Morris Turnpike, Suite 201, Short Hills, NJ 07078

www.blauberg.com

±616 SF DENTAL / MEDICAL OFFICE

40 Eagle Rock Avenue, East Hanover, NJ 07936



LOCATION DESCRIPTION

Approx. 1.8 Miles to I-280
 Approx. 3.7 Miles to Route 46 and I-80
 Approx. 10.1 Miles to Garden State Parkway
 Approx. 13.9 Miles to I-78
 Approx. 15 Miles to I-95
 Approx. 18.9 Miles to Newark Airport & Ports

OFFERING SUMMARY

Lease Rate:	\$1,400 SF Per Month Gross
Available SF:	±616 SF
Lot Size:	0.43 Acres
Building Size:	616 SF

PROPERTY HIGHLIGHTS

- ±616 SF Office Space
- Ideal for Dental / Medical Uses
- 2 Dental Rooms
- Waiting Room
- Reception Area
- One Bathroom

For More Information, Contact
SCOTT G. SAVASTANO

Director of Capital Markets
 sgsavastano@blauberg.com
 973.379.6644 x147

830 Morris Turnpike
 Suite 201
 Short Hills, NJ 07078

www.blauberg.com



The information contained herein has been obtained from sources considered to be reliable, but no guarantee of its accuracy is made by this company. In addition, no representation is made respecting zoning, condition of title, dimensions, or any matters of a legal or environmental nature. Such matters should be referred to legal counsel for determination. Terms and conditions are subject to change without prior notice. Subject to errors and omissions.

OFFICE SPACE

FOR LEASE

±616 SF DENTAL / MEDICAL OFFICE

40 Eagle Rock Avenue, East Hanover, NJ 07936



For More Information, Contact
SCOTT G. SAVASTANO
Director of Capital Markets
sgsavastano@blauberg.com
973.379.6644 x147

830 Morris Turnpike
Suite 201
Short Hills, NJ 07078
www.blauberg.com



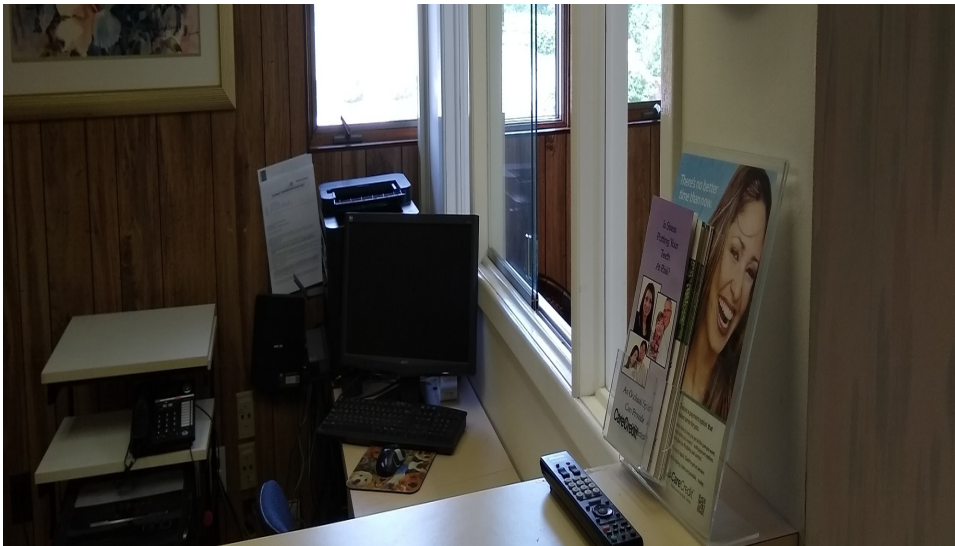
The information contained herein has been obtained from sources considered to be reliable, but no guarantee of its accuracy is made by this company. In addition, no representation is made respecting zoning, condition of title, dimensions, or any matters of a legal or environmental nature. Such matters should be referred to legal counsel for determination. Terms and conditions are subject to change without prior notice. Subject to errors and omissions.

OFFICE SPACE

FOR LEASE

±616 SF DENTAL / MEDICAL OFFICE

40 Eagle Rock Avenue, East Hanover, NJ 07936



For More Information, Contact
SCOTT G. SAVASTANO
Director of Capital Markets
sgsavastano@blauberg.com
973.379.6644 x147

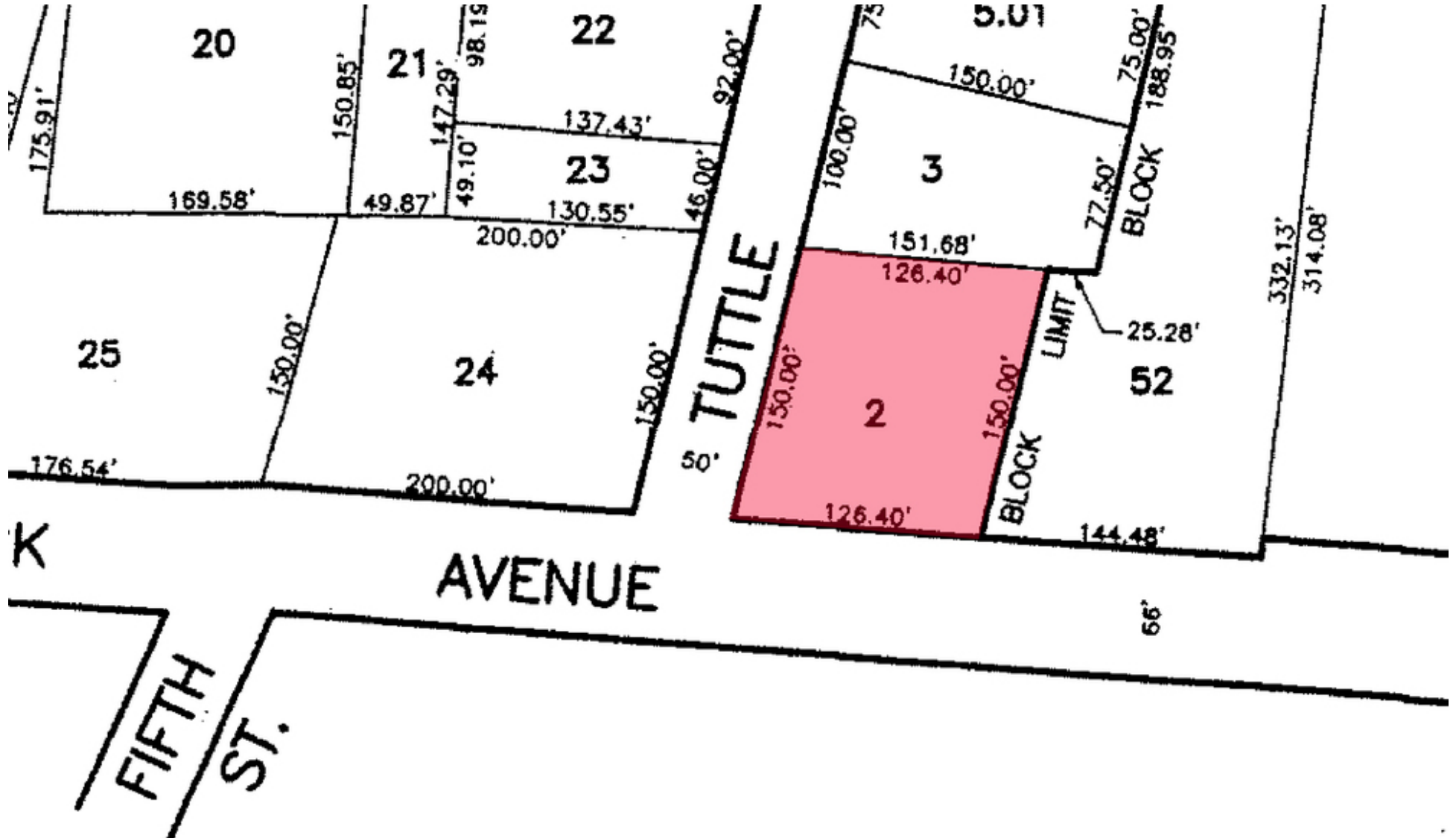
830 Morris Turnpike
Suite 201
Short Hills, NJ 07078
www.blauberg.com



The information contained herein has been obtained from sources considered to be reliable, but no guarantee of its accuracy is made by this company. In addition, no representation is made respecting zoning, condition of title, dimensions, or any matters of a legal or environmental nature. Such matters should be referred to legal counsel for determination. Terms and conditions are subject to change without prior notice. Subject to errors and omissions.

±616 SF DENTAL / MEDICAL OFFICE

40 Eagle Rock Avenue, East Hanover, NJ 07936



For More Information, Contact
SCOTT G. SAVASTANO
 Director of Capital Markets
 sgsavastano@blauberg.com
 973.379.6644 x147

830 Morris Turnpike
 Suite 201
 Short Hills, NJ 07078

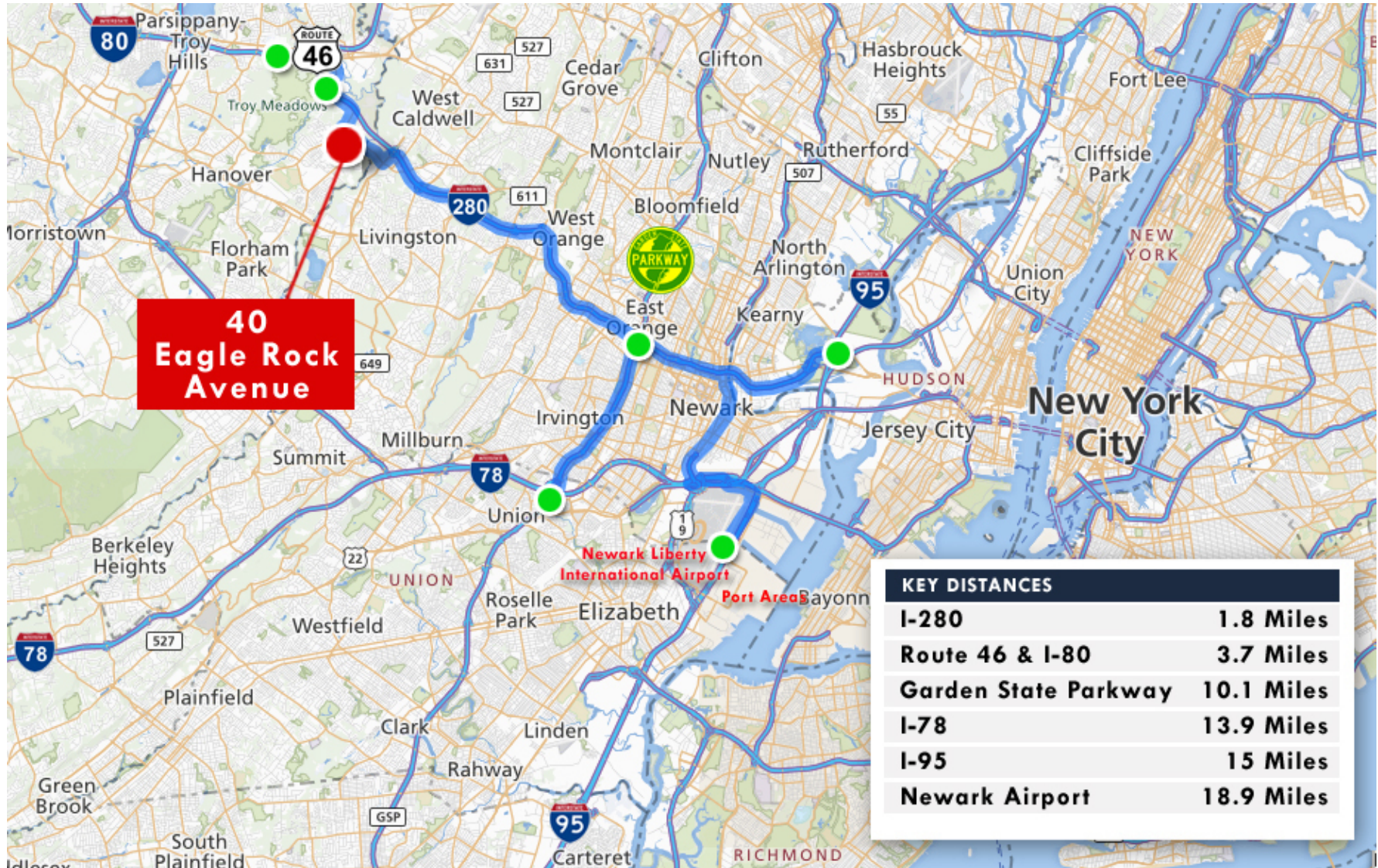
www.blauberg.com



The information contained herein has been obtained from sources considered to be reliable, but no guarantee of its accuracy is made by this company. In addition, no representation is made respecting zoning, condition of title, dimensions, or any matters of a legal or environmental nature. Such matters should be referred to legal counsel for determination. Terms and conditions are subject to change without prior notice. Subject to errors and omissions.

±616 SF DENTAL / MEDICAL OFFICE

40 Eagle Rock Avenue, East Hanover, NJ 07936



For More Information, Contact
SCOTT G. SAVASTANO

Director of Capital Markets
sgsavastano@blauberg.com
973.379.6644 x147

830 Morris Turnpike
Suite 201
Short Hills, NJ 07078

www.blauberg.com



The information contained herein has been obtained from sources considered to be reliable, but no guarantee of its accuracy is made by this company. In addition, no representation is made respecting zoning, condition of title, dimensions, or any matters of a legal or environmental nature. Such matters should be referred to legal counsel for determination. Terms and conditions are subject to change without prior notice. Subject to errors and omissions.

±616 SF DENTAL / MEDICAL OFFICE

40 Eagle Rock Avenue, East Hanover, NJ 07936

Radius	1 Mile	3 Mile	5 Mile
Population:			
2024 Projection	4,772	55,030	165,338
2019 Estimate	4,626	53,025	161,550
2010 Census	3,887	44,728	148,555
Growth 2019-2024	3.16%	3.78%	2.34%
Growth 2010-2019	19.01%	18.55%	8.75%
2019 Population Hispanic Origin	366	3,613	12,208
2019 Population by Race:			
White	3,966	40,983	122,627
Black	64	1,331	6,906
Am. Indian & Alaskan	8	93	313
Asian	537	9,876	29,021
Hawaiian & Pacific Island	0	18	48
Other	51	723	2,634
U.S. Armed Forces:	0	0	29
Households:			
2024 Projection	1,585	19,887	60,498
2019 Estimate	1,538	19,162	59,149
2010 Census	1,297	16,140	54,532
Growth 2019 - 2024	3.06%	3.78%	2.28%
Growth 2010 - 2019	18.58%	18.72%	8.47%
Owner Occupied	1,453	15,306	45,351
Renter Occupied	85	3,856	13,797
2019 Avg Household Income	\$147,261	\$141,502	\$144,685
2019 Med Household Income	\$133,035	\$114,814	\$116,967
2019 Households by Household Inc:			
<\$25,000	141	1,908	5,517
\$25,000 - \$50,000	239	2,217	6,138
\$50,000 - \$75,000	65	2,126	6,649
\$75,000 - \$100,000	175	2,031	6,532
\$100,000 - \$125,000	117	2,193	6,980
\$125,000 - \$150,000	98	1,552	5,163
\$150,000 - \$200,000	360	2,814	8,134
\$200,000+	342	4,322	14,034

For More Information, Contact

SCOTT G. SAVASTANO

Director of Capital Markets

sgsavastano@blauberg.com

973.379.6644 x147

830 Morris Turnpike
Suite 201
Short Hills, NJ 07078

www.blauberg.com



The information contained herein has been obtained from sources considered to be reliable, but no guarantee of its accuracy is made by this company. In addition, no representation is made respecting zoning, condition of title, dimensions, or any matters of a legal or environmental nature. Such matters should be referred to legal counsel for determination. Terms and conditions are subject to change without prior notice. Subject to errors and omissions.

±616 SF DENTAL / MEDICAL OFFICE

40 Eagle Rock Avenue, East Hanover, NJ 07936



SCOTT G. SAVASTANO

Director of Capital Markets

sgsavastano@blauberg.com

Direct: 973.379.6644 x147 | **Cell:** 973.464.3800

PROFESSIONAL BACKGROUND

Scott Savastano, Director of Capital Markets at The Blau & Berg Company, is responsible for representing clients in all positions of real estate transactions, as well as managing investments between investors, businesses, government and individual clients. He has more than 25 years of real estate experience as a transaction specialist. He is highly experienced in the successful acquisition, financing, development and disposition of more than \$1 billion in commercial real estate nationwide. Scott is a true problem solver. He brings an entrepreneurial approach to clients.

EDUCATION

Montclair State University – B.A. in Accounting (Minor in Paralegal Studies)

For More Information, Contact

SCOTT G. SAVASTANO

Director of Capital Markets

sgsavastano@blauberg.com

973.379.6644 x147

830 Morris Turnpike
Suite 201
Short Hills, NJ 07078

www.blauberg.com



The information contained herein has been obtained from sources considered to be reliable, but no guarantee of its accuracy is made by this company. In addition, no representation is made respecting zoning, condition of title, dimensions, or any matters of a legal or environmental nature. Such matters should be referred to legal counsel for determination. Terms and conditions are subject to change without prior notice. Subject to errors and omissions.