

ORLANDO REDEVELOPMENT SITE

LOCATION: NE Corner of North Orange Blossom Trail and W. Amelia Street, Orlando,

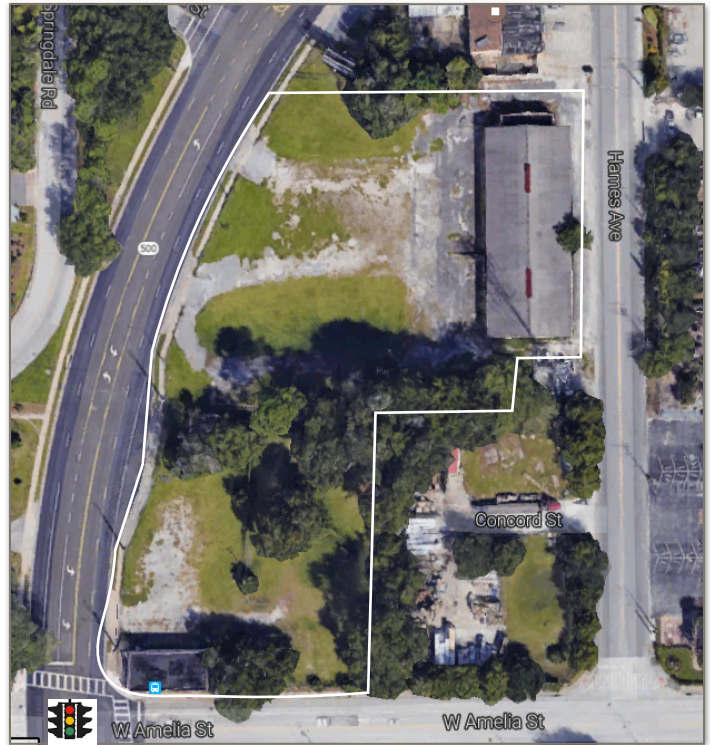
501 N Orange Blossom Trail
Property ID: 27-22-29-2984-07-005
530 Hames Avenue
Property ID: 27-22-29-4952-03-031

SIZE: 2.62 +/- Acres
470 +/- Feet Frontage on US Hwy 441 (NOBT)
230 +/- Feet Frontage on W. Amelia Street

TRAFFIC: 27,000 AADT on US Hwy 441 (NOBT)
1,600 AADT on W. Amelia Street

ZONING: MU-1/T/SP/PH
FLU: MUC MED (15-30 DU/Acre &/or 0.50 FAR)

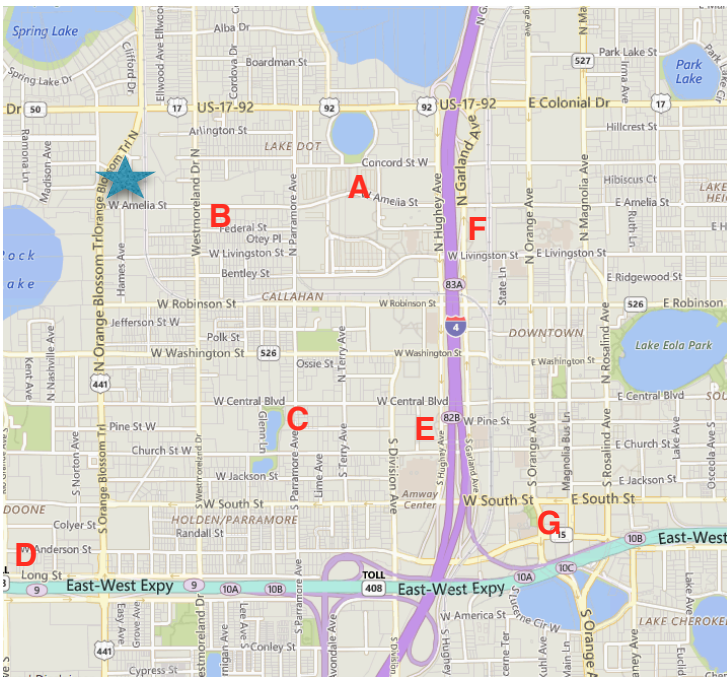
POTENTIAL USES: Retail, Office, Residential,
Auto Related



\$2,399,000

Subject property is located only two blocks west of Creative Village, a 68 acre mixed use, transit oriented, urban infill neighborhood. It will be home to UCF Downtown; high-tech, digital media and creative companies and a diverse mix of students, employees and residents. The University of Central Florida, in partnership with Valencia College, will serve approximately 7,700 students on a new campus, scheduled to open in August 2019. Long term plans call for 10-15,000 students. Included are student housing, a public school, apartments, parking garage and renovation of several existing properties. Vertical construction to begin in 2017 with at least seven projects scheduled to open in 2018 and 2019.

- A - Creative Village
- B - PS-8 Parramore School
- C - Orlando City Stadium
- D - Camping World Stadium
- E - Sports Entertainment District
- F - Lynx Central Station
- G - Dr. Phillips Center



Gary Medley, Broker
RG Commercial Real Estate
407-463-5242 cell
garymedleycre@gmail.com

All information contained herein was obtained from sources deemed reliable but is not warranted as to its accuracy and reliability by RG COMMERCIAL RE, its agents and/or employees. All figures are estimates and any Buyer or Seller is advised to personally verify all information contained herein.